

SN74LS221

Dual Monostable Multivibrators with Schmitt-Trigger Inputs

Each multivibrator of the LS221 features a negative-transition-triggered input and a positive-transition-triggered input either of which can be used as an inhibit input.

Pulse triggering occurs at a voltage level and is not related to the transition time of the input pulse. Schmitt-trigger input circuitry for B input allows jitter-free triggering for inputs as slow as 1 volt/second, providing the circuit with excellent noise immunity. A high immunity to V_{CC} noise is also provided by internal latching circuitry.

Once triggered, the outputs are independent of further transitions of the inputs and are a function of the timing components. The output pulses can be terminated by the overriding clear. Input pulse width may be of any duration relative to the output pulse width. Output pulse width may be varied from 35 nanoseconds to a maximum of 70 s by choosing appropriate timing components. With $R_{ext} = 2.0 \text{ k}\Omega$ and $C_{ext} = 0$, a typical output pulse of 30 nanoseconds is achieved. Output rise and fall times are independent of pulse length.

Pulse width stability is achieved through internal compensation and is virtually independent of V_{CC} and temperature. In most applications, pulse stability will only be limited by the accuracy of external timing components.

Jitter-free operation is maintained over the full temperature and V_{CC} ranges for greater than six decades of timing capacitance (10 pF to 10 μF), and greater than one decade of timing resistance (2.0 to 100 $\text{k}\Omega$ for the SN74LS221). Pulse width is defined by the relationship: $t_w(\text{out}) = C_{ext}R_{ext} \ln 2.0 \approx 0.7 C_{ext} R_{ext}$; where t_w is in ns if C_{ext} is in pF and R_{ext} is in $\text{k}\Omega$. If pulse cutoff is not critical, capacitance up to 1000 μF and resistance as low as 1.4 $\text{k}\Omega$ may be used. The range of jitter-free pulse widths is extended if V_{CC} is 5.0 V and 25°C temperature.

- SN74LS221 is a Dual Highly Stable One-Shot
- Overriding Clear Terminates Output Pulse
- Pin Out is Identical to SN74LS123

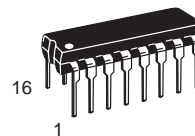
GUARANTEED OPERATING RANGES

Symbol	Parameter	Min	Typ	Max	Unit
V_{CC}	Supply Voltage	4.75	5.0	5.25	V
T_A	Operating Ambient Temperature Range	0	25	70	°C
I_{OH}	Output Current – High			-0.4	mA
I_{OL}	Output Current – Low			8.0	mA

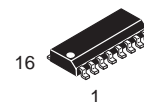


ON Semiconductor
Formerly a Division of Motorola
<http://onsemi.com>

**LOW
POWER
SCHOTTKY**



**PLASTIC
N SUFFIX
CASE 648**



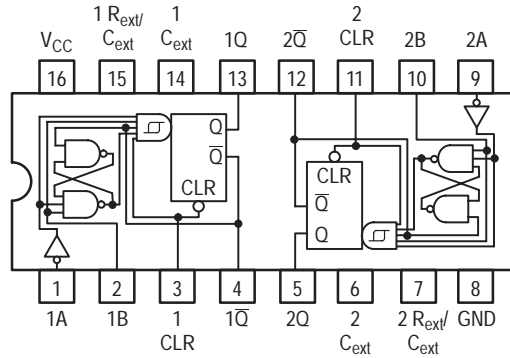
**SOIC
D SUFFIX
CASE 751B**

ORDERING INFORMATION

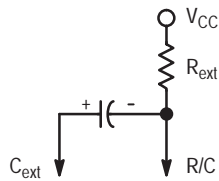
Device	Package	Shipping
SN74LS221N	16 Pin DIP	2000 Units/Box
SN74LS221D	16 Pin	2500/Tape & Reel

SN74LS221

(TOP VIEW)



Positive logic: Low input to clear resets Q low and \bar{Q} high regardless of dc levels at A or B inputs.



**FUNCTION TABLE
(EACH MONOSTABLE)**

INPUTS			OUTPUTS	
CLEAR	A	B	Q	\bar{Q}
L	X	X	L	H
X	H	X	L	H
X	X	L	L	H
H	L	↑		
H	↓	H		
*↑	L	H		

*See operational notes — Pulse Trigger Modes

TYPE	TYPICAL POWER DISSIPATION	MAXIMUM OUTPUT PULSE LENGTH
SN74LS221	23 mW	70 s

SN74LS221

OPERATIONAL NOTES

Once in the pulse trigger mode, the output pulse width is determined by $t_W = R_{ext}C_{ext}\ln 2$, as long as R_{ext} and C_{ext} are within their minimum and maximum values and the duty cycle is less than 50%. This pulse width is essentially independent of V_{CC} and temperature variations. Output pulse widths varies typically no more than $\pm 0.5\%$ from device to device.

If the duty cycle, defined as being $100 \cdot \frac{t_W}{T}$ where T is the period of the input pulse, rises above 50%, the output pulse width will become shorter. If the duty cycle varies between low and high values, this causes the output pulse width to vary in length, or jitter. To reduce jitter to a minimum, R_{ext} should be as large as possible. (Jitter is independent of C_{ext}). With $R_{ext} = 100K$, jitter is not appreciable until the duty cycle approaches 90%.

Although the LS221 is pin-for-pin compatible with the LS123, it should be remembered that they are not functionally identical. The LS123 is retriggerable so that the output is dependent upon the input transitions once it is high. This is not the case for the LS221. Also note that it is recommended to externally ground the LS123 C_{ext} pin. However, this cannot be done on the LS221.

The SN74LS221 is a dual, monolithic, non-retriggerable, high-stability one shot. The output pulse width, t_W can be varied over 9 decades of timing by proper selection of the external timing components, R_{ext} and C_{ext} .

Pulse triggering occurs at a voltage level and is, therefore, independent of the input slew rate. Although all three inputs have this Schmitt-trigger effect, only the B input should be used for very long transition triggers ($\geq 1.0 \mu V/s$). High immunity to V_{CC} noise (typically 1.5 V) is achieved by internal latching circuitry. However, standard V_{CC} bypassing is strongly recommended.

The LS221 has four basic modes of operation.

Clear Mode: If the clear input is held low, irregardless of the previous output state and other input states, the Q output is low.

Inhibit Mode: If either the A input is high or the B input is low, once the Q output goes low, it cannot be retriggered by other inputs.

Pulse Trigger Mode: A transition of the A or B inputs as indicated in the functional truth table will trigger the Q output to go high for a duration determined by the t_W equation described above; \bar{Q} will go low for a corresponding length of time.

The Clear input may also be used to trigger an output pulse, but special logic preconditioning on the A or B inputs must be done as follows:

Following any output triggering action using the A or B inputs, the A input must be set high OR the B input must be set low to allow Clear to be used as a trigger. Inputs should then be set up per the truth table (without triggering the output) to allow Clear to be used a trigger for the output pulse.

If the Clear pin is routinely being used to trigger the output pulse, the A or B inputs must be toggled as described above before and between each Clear trigger event.

Once triggered, as long as the output remains high, all input transitions (except overriding Clear) are ignored.

Overriding Clear Mode: If the Q output is high, it may be forced low by bringing the clear input low.

SN74LS221

DC CHARACTERISTICS OVER OPERATING TEMPERATURE RANGE (unless otherwise specified)

Symbol	Parameter	Limits			Unit	Test Conditions
		Min	Typ	Max		
V_{T+}	Positive-Going Threshold Voltage at C Input		1.0	2.0	V	$V_{CC} = \text{MIN}$
V_{T-}	Negative-Going Threshold Voltage at C Input	0.7	0.8		V	$V_{CC} = \text{MIN}$
V_{T+}	Positive-Going Threshold Voltage at B Input		1.0	2.0	V	$V_{CC} = \text{MIN}$
V_{T-}	Negative-Going Threshold Voltage at B Input	0.8	0.9		V	$V_{CC} = \text{MIN}$
V_{IH}	Input HIGH Voltage	2.0			V	Guaranteed Input HIGH Voltage for A Input
V_{IL}	Input LOW Voltage			0.8	V	Guaranteed Input LOW Voltage for A Input
V_{IK}	Input Clamp Voltage			-1.5	V	$V_{CC} = \text{MIN}$, $I_{IN} = -18 \text{ mA}$
V_{OH}	Output HIGH Voltage	2.7	3.4		V	$V_{CC} = \text{MIN}$, $I_{OH} = \text{MAX}$
V_{OL}	Output LOW Voltage		0.35	0.5	V	$I_{OL} = 8.0 \text{ mA}$, $V_{CC} = \text{MIN}$
I_{IH}	Input HIGH Current			20	μA	$V_{CC} = \text{MAX}$, $V_{IN} = 2.7 \text{ V}$
				0.1	mA	$V_{CC} = \text{MAX}$, $V_{IN} = 7.0 \text{ V}$
I_{IL}	Input LOW Current Input A Input B Clear			-0.4	mA	$V_{CC} = \text{MAX}$, $V_{IN} = 0.4 \text{ V}$
				-0.8		
				-0.8		
I_{OS}	Short Circuit Current (Note 1)	-20		-100	mA	$V_{CC} = \text{MAX}$
I_{CC}	Power Supply Current Quiescent Triggered		4.7	11	mA	$V_{CC} = \text{MAX}$
			19	27		

Note 1: Not more than one output should be shorted at a time, nor for more than 1 second.

SN74LS221

AC CHARACTERISTICS ($V_{CC} = 5.0\text{ V}$, $T_A = 25^\circ\text{C}$)

Symbol	From (Input)	To (Output)	Limits			Unit	Test Conditions
			Min	Typ	Max		
t_{PLH}	A	Q		45	70	ns	$C_L = 15\text{ pF}$, See Figure 1
	B	Q		35	55		
t_{PHL}	A	\bar{Q}		50	80	ns	
	B	\bar{Q}		40	65		
t_{PHL}	Clear	Q		35	55	ns	
t_{PLH}	Clear	\bar{Q}		44	65	ns	
$t_{W(out)}$	A or B	Q or \bar{Q}	70	120	150	ns	$C_{ext} = 80\text{ pF}$, $R_{ext} = 2.0\ \Omega$
			20	47	70		$C_{ext} = 0$, $R_{ext} = 2.0\text{ k}\Omega$
			600	670	750		$C_{ext} = 100\text{ pF}$, $R_{ext} = 10\text{ k}\Omega$
			6.0	6.9	7.5		ms

AC SETUP REQUIREMENTS ($V_{CC} = 5.0\text{ V}$, $T_A = 25^\circ\text{C}$)

Symbol	Parameter	Limits			Unit
		Min	Typ	Max	
dv/dt	Rate of Rise or Fall of Input Pulse	Schmitt, B	1.0		V/s
		Logic Input, A	1.0		V/ μs
t_W	Input Pulse Width	A or B, $t_{W(in)}$	40		ns
		Clear, $t_W(\text{clear})$	40		
t_s	Clear-Inactive-State Setup Time	15		ns	
R_{ext}	External Timing Resistance	1.4		100	$\text{k}\Omega$
C_{ext}	External Timing Capacitance	0		1000	μF
	Output Duty Cycle	$R_T = 2.0\text{ k}\Omega$		50	%
		$R_T = \text{MAX } R_{ext}$		90	

SN74LS221

AC WAVEFORMS

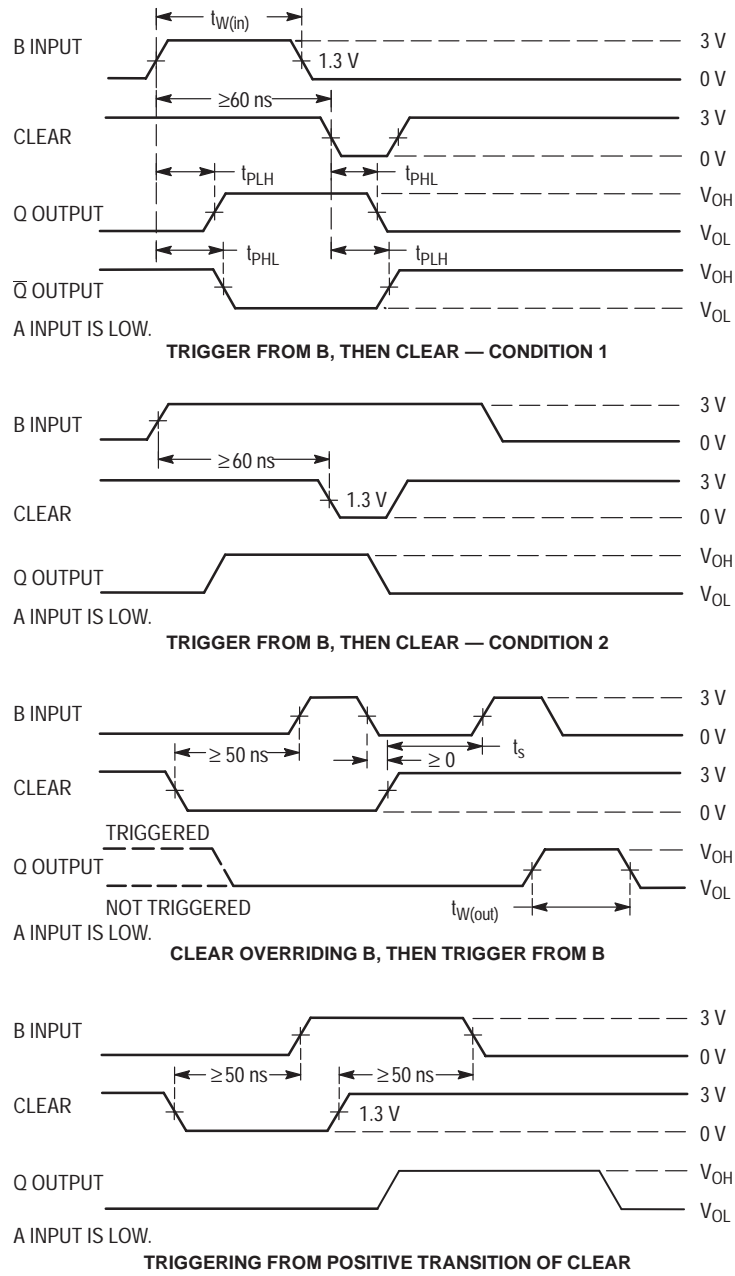
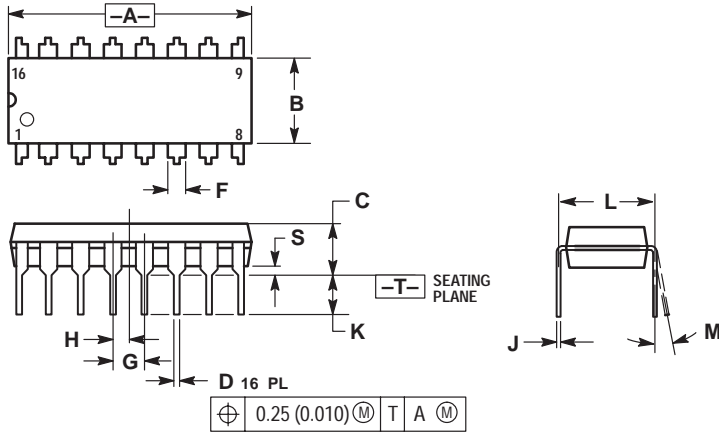


Figure 1.

SN74LS221

PACKAGE DIMENSIONS

N SUFFIX PLASTIC PACKAGE CASE 648-08 ISSUE R

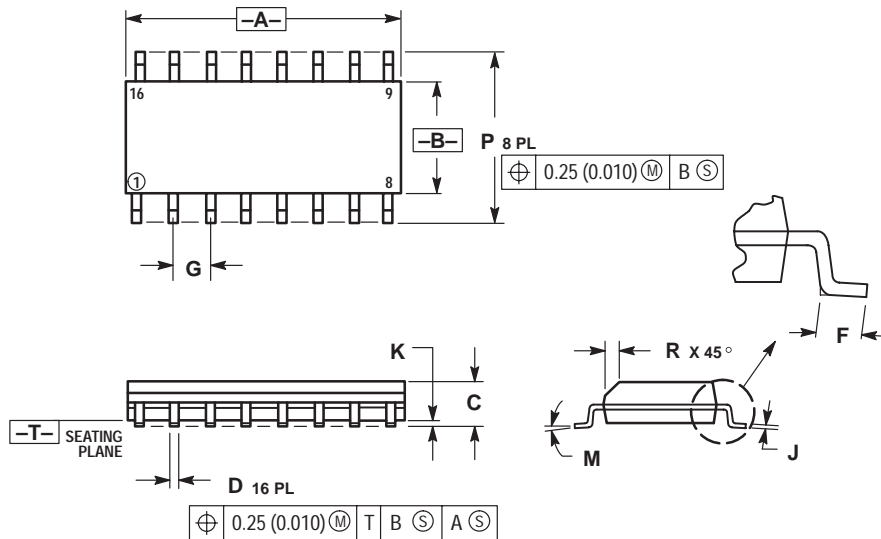


NOTES:

1. DIMENSIONING AND TOLERANCING PER ANSI Y14.5M, 1982.
2. CONTROLLING DIMENSION: INCH.
3. DIMENSION L TO CENTER OF LEADS WHEN FORMED PARALLEL.
4. DIMENSION B DOES NOT INCLUDE MOLD FLASH.
5. ROUNDED CORNERS OPTIONAL.

DIM	INCHES		MILLIMETERS	
	MIN	MAX	MIN	MAX
A	0.740	0.770	18.80	19.55
B	0.250	0.270	6.35	6.85
C	0.145	0.175	3.69	4.44
D	0.015	0.021	0.39	0.53
F	0.040	0.70	1.02	1.77
G	0.100 BSC		2.54 BSC	
H	0.050 BSC		1.27 BSC	
J	0.008	0.015	0.21	0.38
K	0.110	0.130	2.80	3.30
L	0.295	0.305	7.50	7.74
M	0°	10°	0°	10°
S	0.020	0.040	0.51	1.01


D SUFFIX PLASTIC SOIC PACKAGE CASE 751B-05 ISSUE J



NOTES:

1. DIMENSIONING AND TOLERANCING PER ANSI Y14.5M, 1982.
2. CONTROLLING DIMENSION: MILLIMETER.
3. DIMENSIONS A AND B DO NOT INCLUDE MOLD PROTRUSION.
4. MAXIMUM MOLD PROTRUSION 0.15 (0.006) PER SIDE.
5. DIMENSION D DOES NOT INCLUDE DAMBAR PROTRUSION. ALLOWABLE DAMBAR PROTRUSION SHALL BE 0.127 (0.005) TOTAL IN EXCESS OF THE D DIMENSION AT MAXIMUM MATERIAL CONDITION.

DIM	MILLIMETERS		INCHES	
	MIN	MAX	MIN	MAX
A	9.80	10.00	0.386	0.393
B	3.80	4.00	0.150	0.157
C	1.35	1.75	0.054	0.068
D	0.35	0.49	0.014	0.019
F	0.40	1.25	0.016	0.049
G	1.27 BSC		0.050 BSC	
J	0.19	0.25	0.008	0.009
K	0.10	0.25	0.004	0.009
M	0°	7°	0°	7°
P	5.80	6.20	0.229	0.244
R	0.25	0.50	0.010	0.019

ON Semiconductor and  are trademarks of Semiconductor Components Industries, LLC (SCILLC). SCILLC reserves the right to make changes without further notice to any products herein. SCILLC makes no warranty, representation or guarantee regarding the suitability of its products for any particular purpose, nor does SCILLC assume any liability arising out of the application or use of any product or circuit, and specifically disclaims any and all liability, including without limitation special, consequential or incidental damages. "Typical" parameters which may be provided in SCILLC data sheets and/or specifications can and do vary in different applications and actual performance may vary over time. All operating parameters, including "Typicals" must be validated for each customer application by customer's technical experts. SCILLC does not convey any license under its patent rights nor the rights of others. SCILLC products are not designed, intended, or authorized for use as components in systems intended for surgical implant into the body, or other applications intended to support or sustain life, or for any other application in which the failure of the SCILLC product could create a situation where personal injury or death may occur. Should Buyer purchase or use SCILLC products for any such unintended or unauthorized application, Buyer shall indemnify and hold SCILLC and its officers, employees, subsidiaries, affiliates, and distributors harmless against all claims, costs, damages, and expenses, and reasonable attorney fees arising out of, directly or indirectly, any claim of personal injury or death associated with such unintended or unauthorized use, even if such claim alleges that SCILLC was negligent regarding the design or manufacture of the part. SCILLC is an Equal Opportunity/Affirmative Action Employer.

PUBLICATION ORDERING INFORMATION

North America Literature Fulfillment:

Literature Distribution Center for ON Semiconductor
P.O. Box 5163, Denver, Colorado 80217 USA
Phone: 303-675-2175 or 800-344-3860 Toll Free USA/Canada
Fax: 303-675-2176 or 800-344-3867 Toll Free USA/Canada
Email: ONlit@hibbertco.com

N. American Technical Support: 800-282-9855 Toll Free USA/Canada

EUROPE: LDC for ON Semiconductor – European Support

German Phone: (+1) 303-308-7140 (M-F 2:30pm to 5:00pm Munich Time)
Email: ONlit-german@hibbertco.com
French Phone: (+1) 303-308-7141 (M-F 2:30pm to 5:00pm Toulouse Time)
Email: ONlit-french@hibbertco.com
English Phone: (+1) 303-308-7142 (M-F 1:30pm to 5:00pm UK Time)
Email: ONlit@hibbertco.com

ASIA/PACIFIC: LDC for ON Semiconductor – Asia Support

Phone: 303-675-2121 (Tue-Fri 9:00am to 1:00pm, Hong Kong Time)
Toll Free from Hong Kong 800-4422-3781
Email: ONlit-asia@hibbertco.com

JAPAN: ON Semiconductor, Japan Customer Focus Center
4-32-1 Nishi-Gotanda, Shinagawa-ku, Tokyo, Japan 141-8549

Phone: 81-3-5487-8345
Email: r14153@onsemi.com

Fax Response Line: 303-675-2167
800-344-3810 Toll Free USA/Canada

ON Semiconductor Website: <http://onsemi.com>

For additional information, please contact your local
Sales Representative.