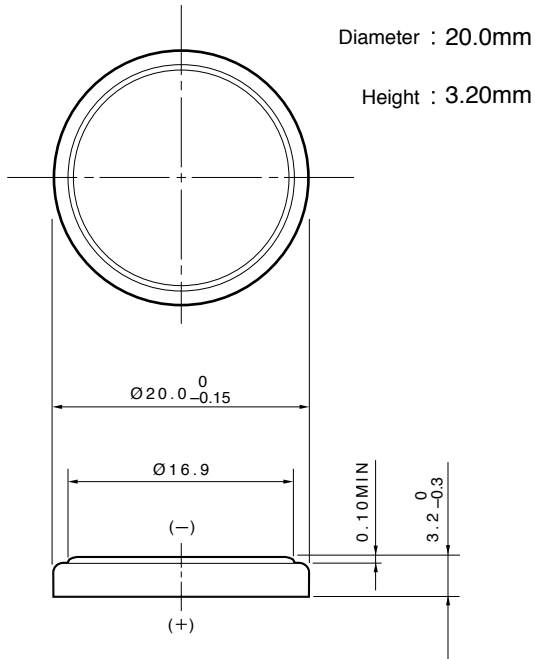


Lithium Manganese Dioxide Battery **CR2032**

■ **Dimensions (mm)**



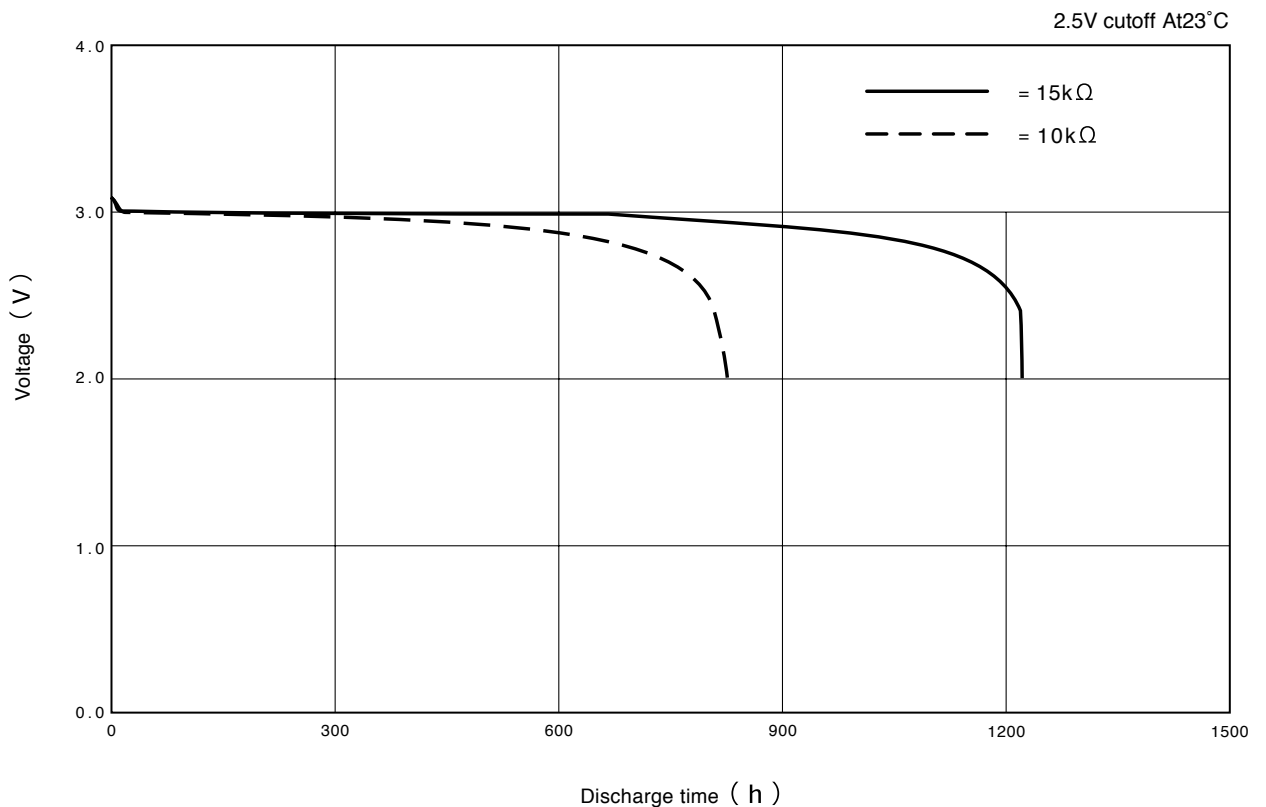
■ **Specifications**

Nominal Voltage	3V
Nominal Capacity (2.5V cutoff)	220mAh
Recommended Continuous Drain	0.3mA
Recommended Pulse Drain	12mA
Weight	3.2g

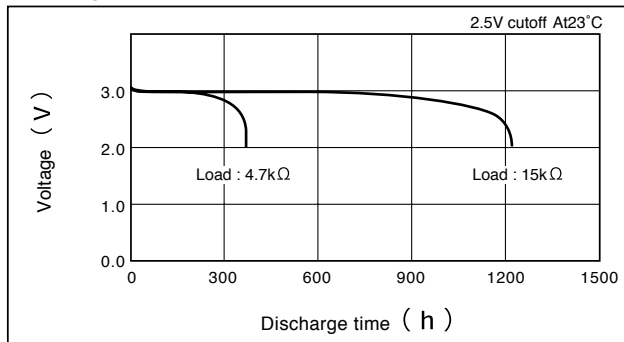
Applications

- Electronic Watch or Clock ● Card Radio
- Remote Controller ● Electronic Game, Toy
- Memory Back-up Power Source for SRAM or Real Time Clock (RTC)

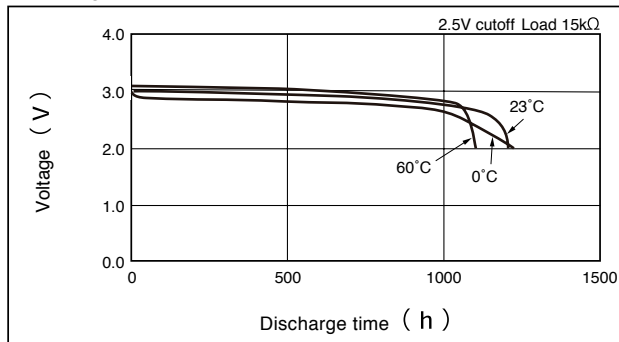
■ **Discharge Characteristics**



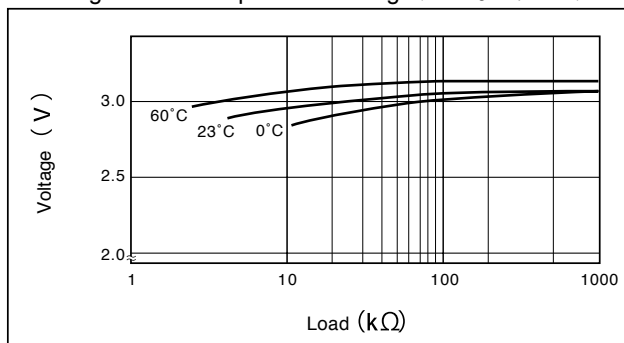
Discharge Characteristics on Load



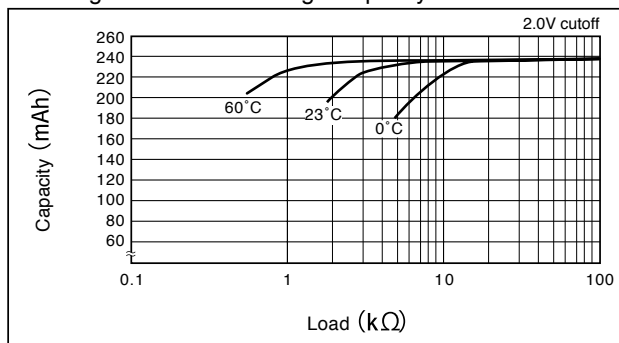
Discharge Characteristics on Temperature



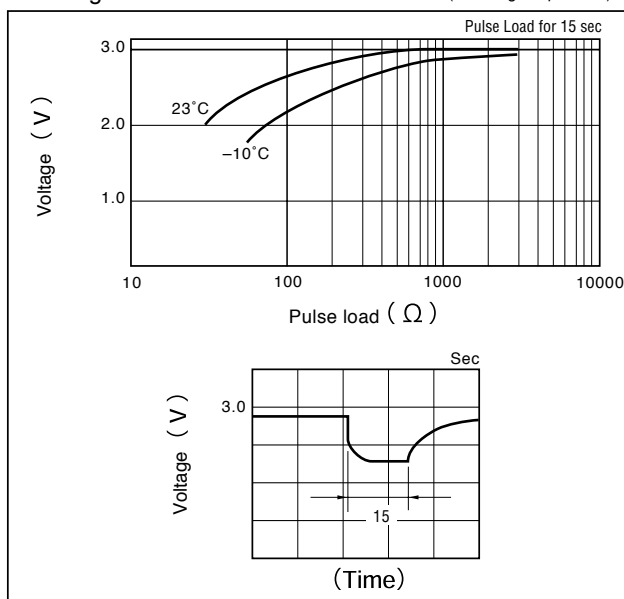
Discharge Load vs. Operation Voltage (Discharge depth 40%)



Discharge Load vs. Discharge Capacity



Discharge Characteristics on Pulse Load (Discharge depth 40%)



Storage Characteristics

