

SANYO	No.4644	<h1 style="margin: 0;">2SA1857</h1> <p style="margin: 0;">PNP Epitaxial Planar Silicon Transistor</p> <p style="margin: 0;">FM, RF, MIX, IF Amp, High-Frequency</p> <p style="margin: 0;">General-Purpose Amp Applications</p>
--------------	---------	--------------------------------------------------------------------------------------------------------------------------------------------------------------------------------------------------------------------------------

Features

- High power gain : PG=25dB typ (f=100MHz)
- High cutoff frequency : $f_T=750\text{MHz}$ typ.
- Low collector to emitter saturation voltage.
- Complementary pair with the 2SC4400.

Absolute Maximum Ratings at $T_a=25^\circ\text{C}$

			unit
Collector to Base Voltage	V_{CB0}	-15	V
Collector to Emitter Voltage	V_{CEO}	-12	V
Emitter to Base Voltage	V_{EBO}	-3	V
Collector Current	I_C	-50	mA
Collector Dissipation	P_C	150	mW
Junction Temperature	T_j	150	$^\circ\text{C}$
Storage Temperature	T_{stg}	-55 to +150	$^\circ\text{C}$

Electrical Characteristics at $T_a=25^\circ\text{C}$

			min	typ	max	unit
Collector Cutoff Current	I_{CBO}	$V_{CB} = -12\text{V}, I_E = 0$			-0.1	μA
Emitter Cutoff Current	I_{EBO}	$V_{EB} = -2\text{V}, I_C = 0$			-0.1	μA
DC Current Gain	h_{FE}	$V_{CE} = -10\text{V}, I_C = -5\text{mA}$	60*		270*	
Gain-Bandwidth Product	f_T	$V_{CE} = -10\text{V}, I_C = -5\text{mA}$		750		MHz
Output Capacitance	C_{ob}	$V_{CB} = -10\text{V}, f = 1\text{MHz}$		1.2	1.6	pF
Reverse Transfer Capacitance	C_{re}	$V_{CB} = -10\text{V}, f = 1\text{MHz}$		0.9		pF
C-E Saturation Voltage	$V_{CE(sat)}$	$I_C = -10\text{mA}, I_B = -1\text{mA}$	-0.1		-0.3	V
Power Gain	PG	$V_{CE} = -10\text{V}, I_C = -10\text{mA}, f = 100\text{MHz}$		25		dB

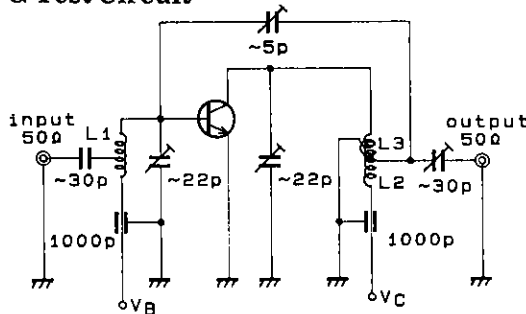
* The 2SA1857 is classified by 5mA h_{FE} as follows:

60 3 120	90 4 180	135 5 270
----------	----------	-----------

Marking : JS

h_{FE} rank : 3, 4, 5

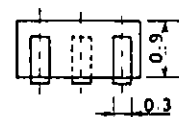
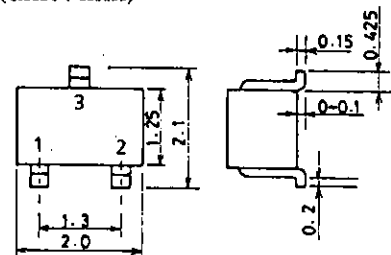
PG Test Circuit



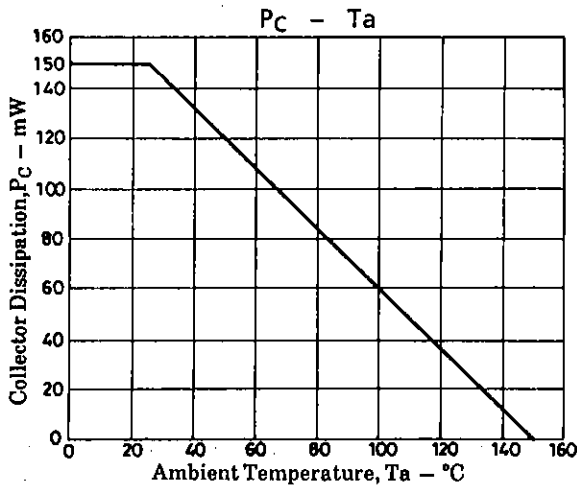
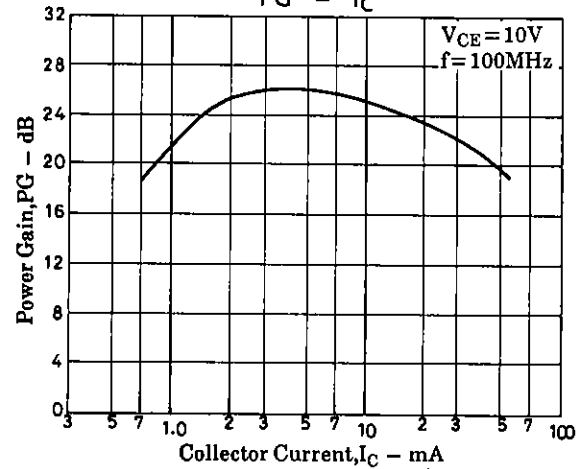
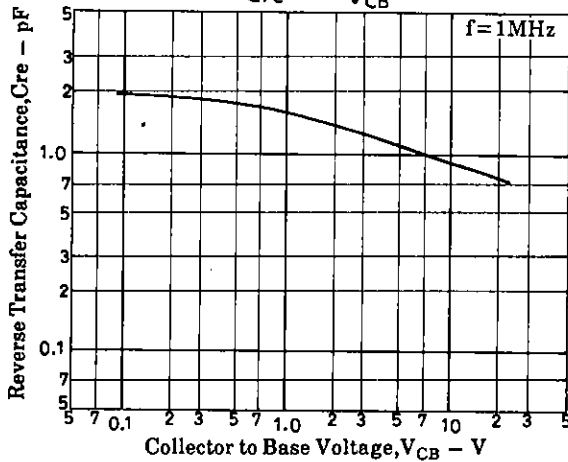
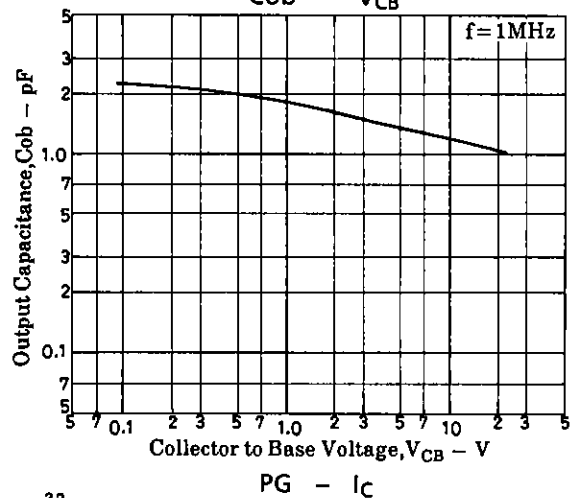
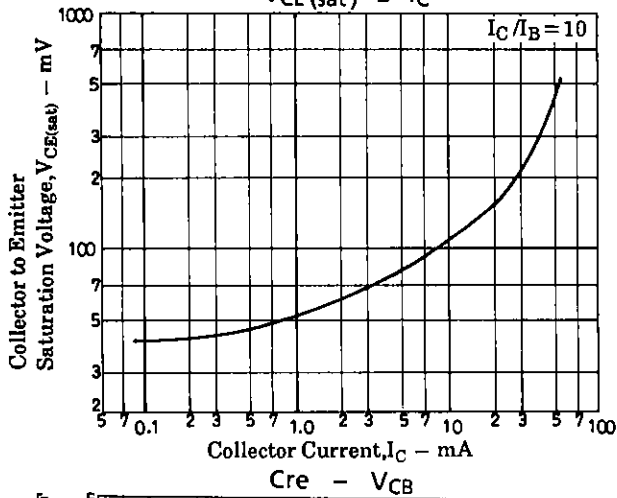
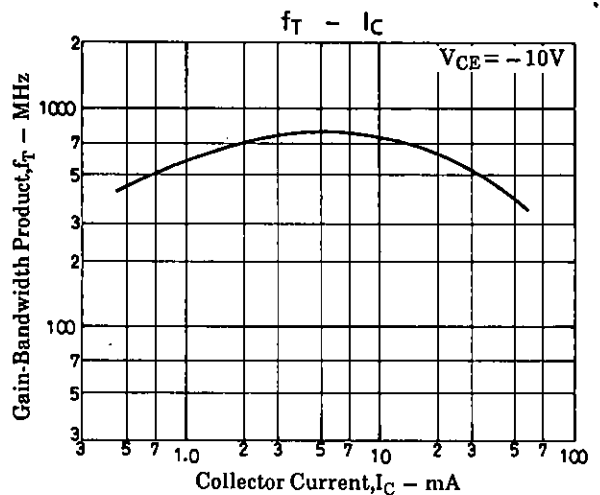
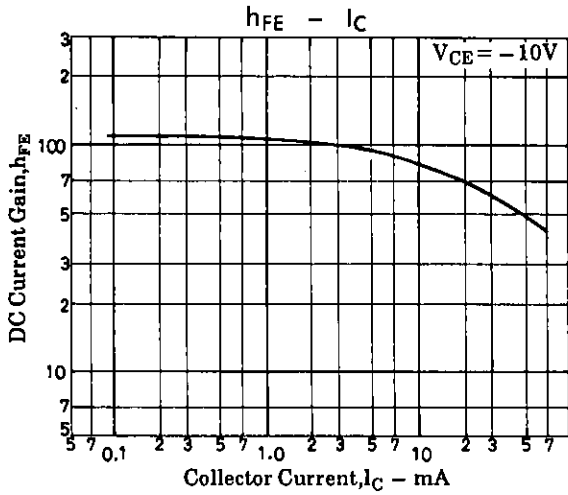
Unit (Capacitance : F) A01661

- L1 : 1mm ϕ plated wire 10mm ϕ 5T, pitch 15mm, tap : 2T from base side
- L2 : 1mm ϕ plated wire 10mm ϕ 7T, pitch 10mm, tap : 2T from V_C side
- L3 : 1mm ϕ enamel wire 10mm ϕ 3T, pitch 10mm

Package Dimensions 2059A
(unit : mm)



- 1: Base
 - 2: Emitter
 - 3: Collector
- SANYO : MCP



- No products described or contained herein are intended for use in surgical implants, life-support systems, aerospace equipment, nuclear power control systems, vehicles, disaster/crime-prevention equipment and the like, the failure of which may directly or indirectly cause injury, death or property loss.
- Anyone purchasing any products described or contained herein for an above-mentioned use shall:
 - ① Accept full responsibility and indemnify and defend SANYO ELECTRIC CO., LTD., its affiliates, subsidiaries and distributors and all their officers and employees, jointly and severally, against any and all claims and litigation and all damages, cost and expenses associated with such use:
 - ② Not impose any responsibility for any fault or negligence which may be cited in any such claim or litigation on SANYO ELECTRIC CO., LTD., its affiliates, subsidiaries and distributors or any of their officers and employees jointly or severally.
- Information (including circuit diagrams and circuit parameters) herein is for example only; it is not guaranteed for volume production. SANYO believes information herein is accurate and reliable, but no guarantees are made or implied regarding its use or any infringements of intellectual property rights or other rights of third parties.