

INFRARED LED

MTE2010

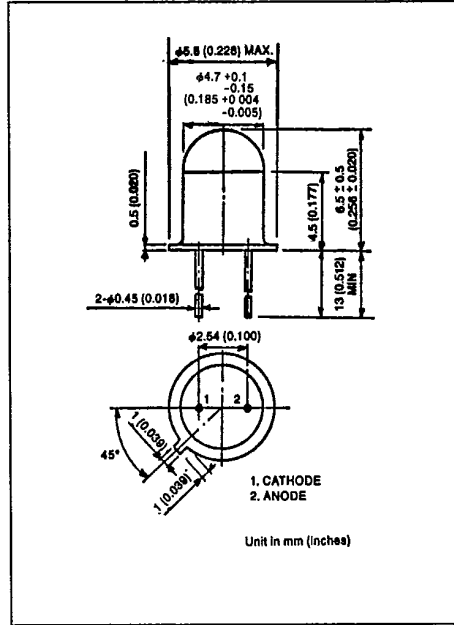
T-41-13

APPLICATIONS

- OPTICAL SWITCH
- TAPE, CARD READER
- AUTOMOBILE POSITION SENSOR
- PHOTO ISOLATOR

FEATURES

- Output spectrally compatible with silicon sensor MTD6010A, MTD6140.
- High radiant intensity.
- High radiant power.
- Glass-to-metal-seal header.



MAXIMUM RATINGS (Ta = 25°C)

CHARACTERISTIC	SYMBOL	RATING	UNIT
Forward Current	I _F	100	mA
Reverse Voltage	V _R	5	V
Peak Pulse Current*	I _{FP}	1	A
Operating Temperature Range	T _{opr}	-40 ~ 125	°C
Storage Temperature Range	T _{stg}	-55 ~ 150	°C

*Pulse width < 100 μs, frequency = 100Hz.

OPTO-ELECTRICAL CHARACTERISTICS (Ta=25°C)

CHARACTERISTIC	SYMBOL	TEST CONDITION	MIN	TYP.	MAX.	UNIT
Forward Voltage	V _F	I _F =50mA	—	1.5	1.9	V
Reverse Current	I _R	V _R =5V	—	—	10	μA
Radiant Intensity	I _E	I _F =50mA	20	35	—	mW/sr
Radiant Power	P _O	I _F =50mA	—	5	—	mW
Viewing Angle	θ _{HP}	I _F =50mA	—	± 8	—	°
Spectral Line Half Width	Δλ	I _F =50mA	—	80	—	nm
Peak Wave Length	λ _P	I _F =50mA	—	880	—	nm
Capacitance	C _T	V _R =0, f=1MHz	—	17	—	pF

INFRARED LED

T-41-13

