

1600 Watts

Total Power: 1600 Watts
 Input Voltages: 85 - 264VAC
 No. of Outputs: Single

AIF - PFC Series



Special Features

- Unity power factor
- High efficiency - up to 95%
- Universal input voltage and frequency range
- Up to 1600W output power
- Positive and Negative enable function
- Parallelable with accurate current sharing
- <10% harmonic distortion conforming to IEC1000-3-2 Compliance
- 100°C baseplate operating temperature
- DC Input option
- Power fail warning signal
- Enable output to control DC-DC Converter
- EEPROM data storage via I²C Interface
- External inrush current limited protection
- Power Density up to 290W/in³

Environmental

Operating temperature
 -40°C to +100°C (baseplate temperature)
 Storage temperature: -40°C to +120°C
 Overtemperature protection: 120°C max
 Calculated MTBF: 450K hours

Safety

UL cUL 60950 Recognized
 TUV EN60950 Licensed

Electrical Specs

Input

Input range 85 - 264VAC / 120 - 370VDC
 (Configurable)
 Input Surge 290VAC / 1s
 Input Frequency 50/60 Hz
 Efficiency 95% @230Vac, 1600W (Typ)

Total Harmonic Distortion Less than 10%
 Power Factor 0.99 typical (Po ≥ 500W);
 0.97 typical (Po ≥ 1000W)

Control

Power Fail Warning Direct drive output to opto-isolator
 Power Fail Warning Adjust 195 to 355Vdc adjustable
 LD Enable Direct drive output to opto-isolator
 PFC Enable TTL compatible (Pos and Neg)
 Voltage Adjust 76% to 100% Vo
 DC Input Enable
 Clock Input (external sync) 6Vp-p typical @ 1MHz ± 5%
 Clock Output (int. clock) 6Vp-p typical @ 1MHz ± 5%
 Temperature
 Monitor Output 10mV/°C
 Current Monitor Output 0 to 1mA (1mA = 4.2A output)
 I²C Interface

Output

Output Voltage 380V typical (Io = 4.2A / Vi > 180Vac)
 393V typical (Io = 0A)
 Current Share Accuracy 10% max
 Overvoltage Protection 430 max
 Power Limit for AC input Vin = 85Vac, Pmax = 1000W
 Vin = 230Vac, Pmax = 1600W

for DC input Vin = 370Vdc, Pmax = 1600W

Not

Nominal values apply with sense pins connected and other control pin unconnected.

Specifications subject to change without notice.

AMERICAS

5810 Van Allen Way
 Carlsbad, CA 92008
 Telephone: 760-930-4600
 Facsimile: 760-930-0698

EUROPE

Astec House, Waterfront Business Park
 Merry Hill, Dudley
 West Midlands, DY5 1LX, UK
 Telephone: 44 (1384) 842-211
 Facsimile: 44 (1384) 843-355

ASIA

Units 2111-2116, Level 21
 Tower 1, Metroplaza
 223, Hing Fong Road
 Fwai Fong, New Territories
 Hong Kong
 Telephone: 852-2437-9662
 Facsimile: 852-2402-4426



Ordering Information

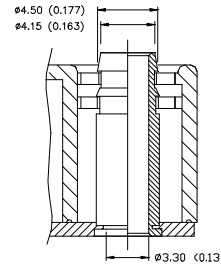
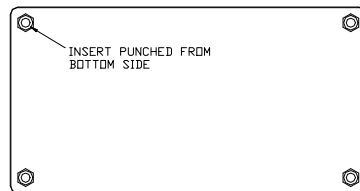
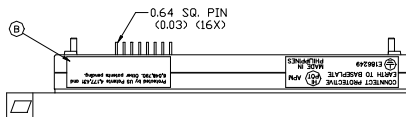
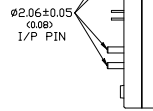
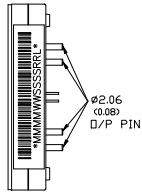
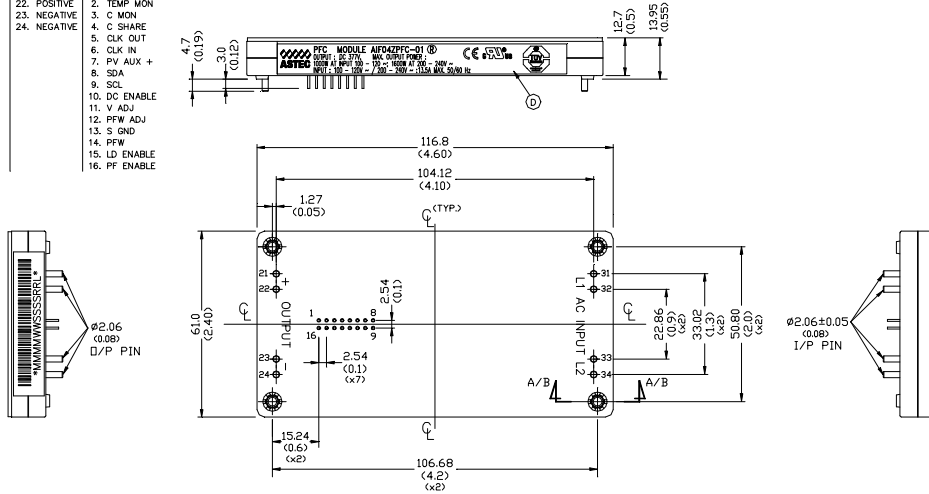
Model Number	Description	Notes
AIF04ZPFC-01	1600W Low Profile PFC Module	For parallel operation the total input current must be < 16Arms. Designed for parallel operation where the total input current >16Arms, requires external rail rectifiers.
AIF04ZPFC-02	1600W Low Profile PFC Module	
AIF04ZPFC-01N		Negative Enable
AIF04ZPFC-02N		Negative Enable

Note: 1. For Non-thread insert, add suffix "NT"

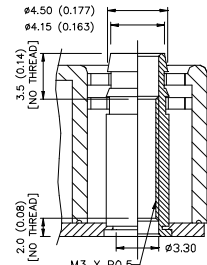
Pin Assignments

Pin Assignments

INPUT(AC)	OUTPUT(DC)	CONTROL PIN
31. L1	21. POSITIVE	1. PV AUX -
32. L1	22. POSITIVE	2. TEMP MON
33. L2	23. NEGATIVE	3. C MON
34. L2	24. NEGATIVE	4. C SHARE
		5. CLK OUT
		6. CLK IN
		7. PV AUX +
		8. SDA
		9. SCL
		10. DC ENABLE
		11. V ADJ
		12. PFW ADJ
		13. S GND
		14. PFW
		15. LD ENABLE
		16. PF ENABLE



SECTION A-A
AIF04ZPFC-xxxNT



SECTION B-B
AIF04ZPFC-xxx

AIF-PFC Series

Astec Integrated Standard