

# DC-8.0 GHz InGaP HBT, MMIC or Packaged, Matched Gain Block Amplifier



May 2006 - Rev 23-May-06

**CGB7015-SC (-BD)**  
RoHS

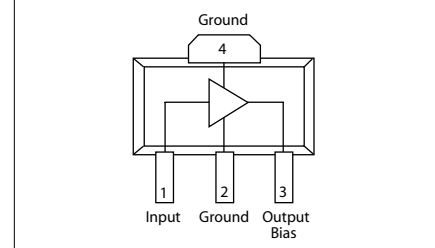
## Features

- ✕ Low Operating Voltage: 5V
- ✕ 37.0 dBm Output IP3 @ 850 MHz
- ✕ 4.0 dB Noise Figure @ 850 MHz
- ✕ 23.0 dB Gain @ 850 MHz
- ✕ 21.0 dBm P1dB @ 850 MHz
- ✕ Low Performance Variation Over Temperature
- ✕ Low Cost: Die Form or SOT-89 Package
- ✕ 100% DC On-Wafer Testing
- ✕ ESD Protection on All Die: >1000V HBM
- ✕ Low Thermal Resistance: <80°C/Watt

## Applications

- ✕ PA Driver Amp, IF Amp, LO Buffer Amp
- ✕ Cellular, PCS, GSM, UMTS
- ✕ Wireless Data and SATCOM
- ✕ Transmit and Receive Functions
- ✕ CATV

**Functional Block Diagram (SOT-89)**



## Absolute Maximum Ratings

Max Device Voltage	+6.0 V
Max Device Current	130 mA
Max Device Dissipated Power	0.65 W
RF Input Power	+17 dBm
Storage Temperature	-55°C to 150°C
Junction Temperature	150°C
Operating Temperature	-40°C to +85°C
Thermal Resistance	80° C/W
EDS (HBM)	1000 V

Operation of this device above any of these parameters may cause permanent damage.

## Description

The CGB7015-SC (-BD) is a Darlington Configured, high dynamic range, utility gain block amplifier. Designed for applications operating within the DC to 8.0 GHz frequency range, Mimix's broadband, cascadable, gain block amplifiers are ideal solutions for transmit, receive and IF applications.

These MMIC amplifiers are available in bare die form or an industry standard SOT-89 package. Mimix's InGaP HBT technology and an industry low thermal resistance offers a

thermally robust and reliable gain block solution.

The InGaP HBT die have extra pads to enable thorough DC testing. This unique test capability and the inclusion of ESD protection on all die, significantly enhances the quality, reliability and ruggedness of these products.

With a single bypass capacitor, optional RF choke and two DC blocking capacitors, this gain block amplifier offers significant ease of use in a broad range of applications.

## Electrical Characteristics

Unless otherwise specified, the following specifications are guaranteed at room temperature in a Mimix test fixture.

Parameter	Temperature (°C)	500 MHz			850 MHz			1950 MHz			2400 MHz			3500 MHz			Units
		Min.	Typ.	Max.	Min.	Typ.	Max.	Min.	Typ.	Max.	Min.	Typ.	Max.	Min.	Typ.	Max.	
Small Signal Gain	+25		24.0		22.0	23.0	24.0	18.2	19.2	20.2	17.0	18.0	19.0		15.5		dB
	-40 to +85		24.0		21.7	23.0	24.3	17.9	19.2	20.5	16.7	18.0	19.3		15.5		dB
Output P1dB	+25		21.2		20.1	21.1		19.0	20.0		17.8	18.8			16.2		dBm
	-40 to +85		21.2		19.8	21.1		18.7	20.0		17.5	18.8			16.2		dBm
Output IP3	+25		37.0		35.5	37.0		33.0	34.5		31.5	33.0			30.1		dBm
	-40 to +85		37.0		35.0	37.0		32.0	34.5		30.5	33.0			30.1		dBm
Noise Figure	+25		4.0			4.0	4.8		4.0	4.8		4.1	5.1		4.2		dB
	-40 to +85		4.0			4.0	5.2		4.0	5.2		4.1	5.5		4.2		dB
Operating Current	+25	87	92	97	87	92	97	87	92	97	87	92	97	87	92	97	mA
	-40 to +85	84	92	100	84	92	100	84	92	100	84	92	100	84	92	100	mA
Input Return Loss	+25		14		11	16		17	25		17	25			25		dB
	-40 to +85		14		10	16		16	25		16	25			25		dB
Output Return Loss	+25		14		11	15		14	20		14	20			14		dB
	-40 to +85		14		10	15		13	20		13	20			14		dB
Pout @ -45 dBc, ACP IS-95, 9 Forward Channels	+25					15			15								dBm
	-40 to +85					15			15								dBm

Notes: 1. Test Conditions in Mimix eval board, Vs = 8 V, Id = 92 mA Typ., Rbias = 30 Ω, Zs = Zl = 50 Ω, OIP3 tone spacing = 1 MHz, Pout per tone = 6 dBm.  
2. Values reflect performance in recommended application circuit.

Mimix Broadband, Inc., 10795 Rockley Rd., Houston, Texas 77099  
Tel: 281.988.4600 Fax: 281.988.4615 mimixbroadband.com

Page 1 of 7

Characteristic Data and Specifications are subject to change without notice. ©2006 Mimix Broadband, Inc.  
Export of this item may require appropriate export licensing from the U.S. Government. In purchasing these parts, U.S. Domestic customers accept their obligation to be compliant with U.S. Export Laws.

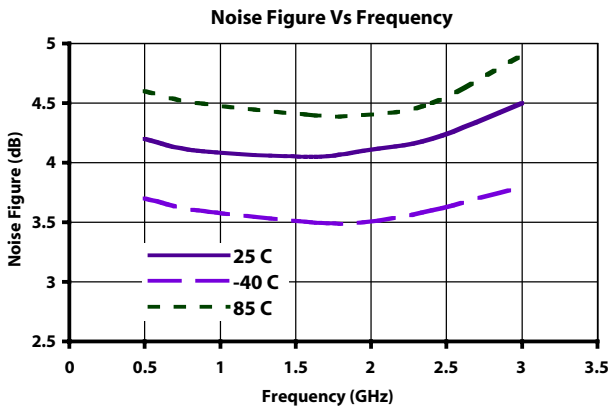
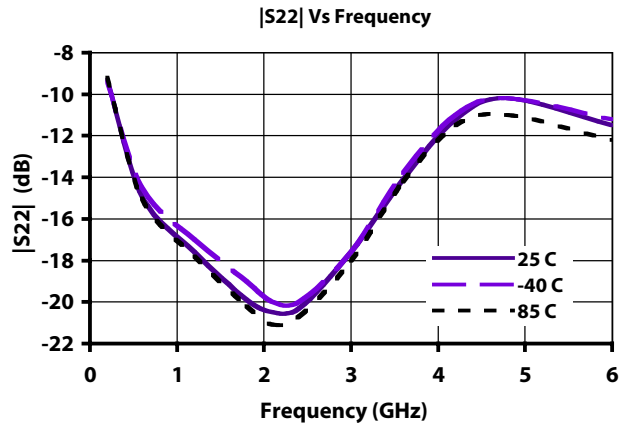
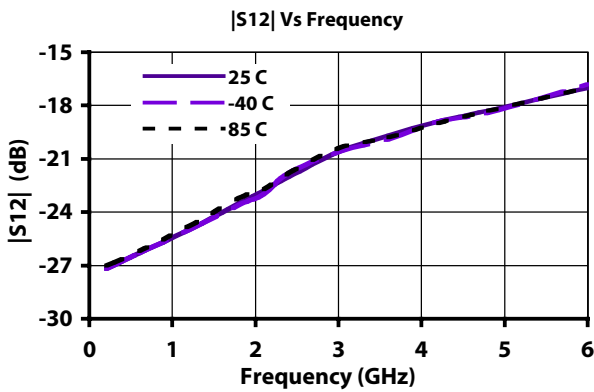
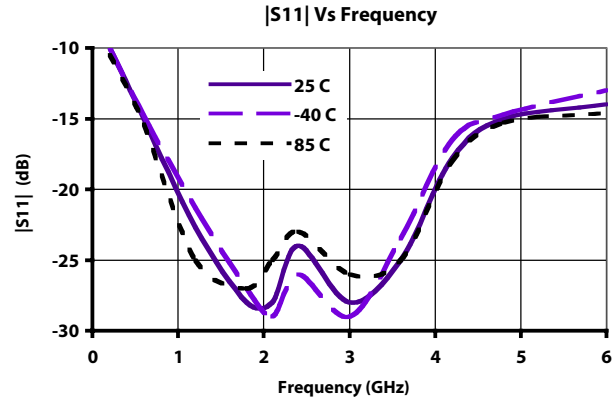
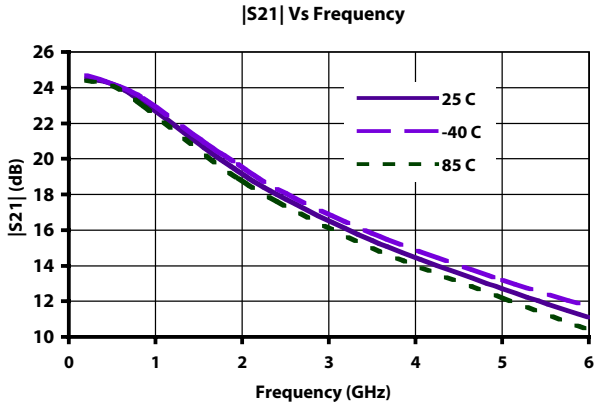
# DC-8.0 GHz InGaP HBT, MMIC or Packaged, Matched Gain Block Amplifier



May 2006 - Rev 23-May-06

**CGB7015-SC (-BD)**  
RoHS

## Typical S-Parameter and Noise Performance



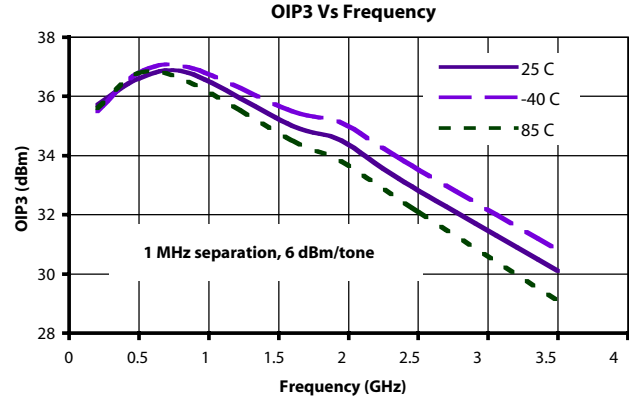
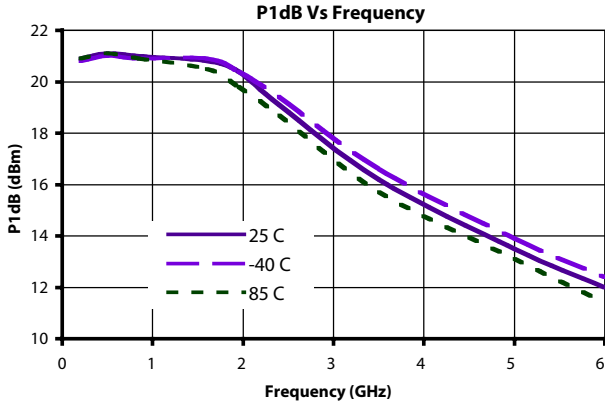
# DC-8.0 GHz InGaP HBT, MMIC or Packaged, Matched Gain Block Amplifier



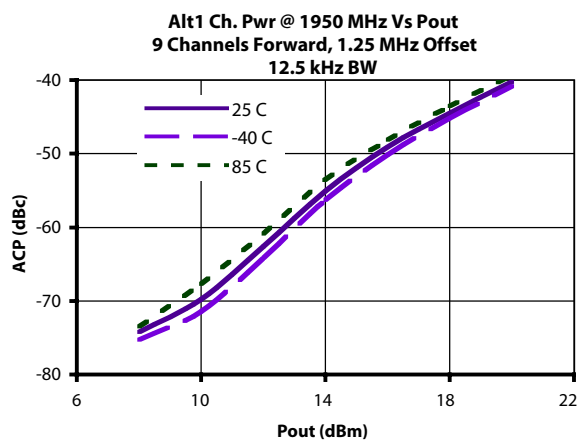
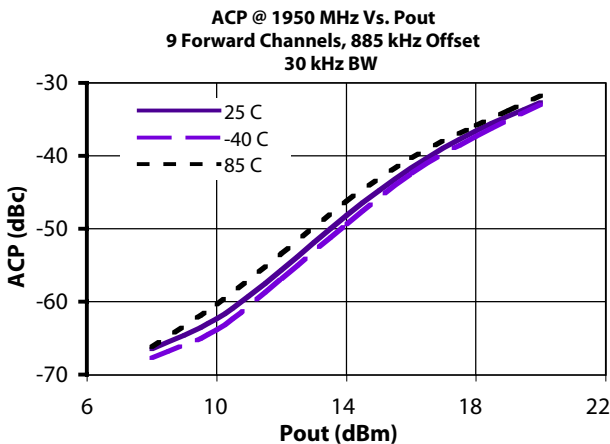
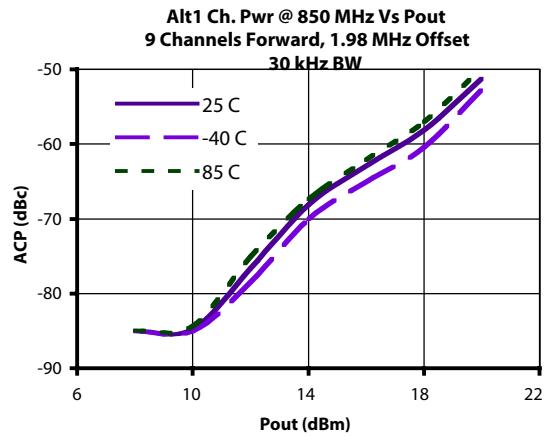
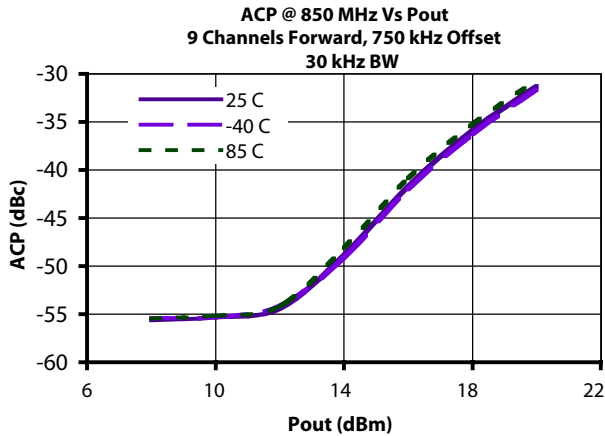
May 2006 - Rev 23-May-06

**CGB7015-SC (-BD)**  
RoHS

## Typical Power and Linearity Performance



## Linearity Performance - Base Station ACP - IS-95



# DC-8.0 GHz InGaP HBT, MMIC or Packaged, Matched Gain Block Amplifier



May 2006 - Rev 23-May-06

**CGB7015-SC (-BD)**  
RoHS

## Typical Scattering Parameters (Vd = +4.8V, Icc = 95 mA, T = 23°C, device in a 50 ohm system)

Frequency (MHz)	S <sub>11</sub>		S <sub>21</sub>		S <sub>12</sub>		S <sub>22</sub>	
	(Mag)	(Ang)	(Mag)	(Ang)	(Mag)	(Ang)	(Mag)	(Ang)
100	0.20	174	18.6	172	0.04	1	0.15	179
200	0.19	168	18.3	164	0.04	2	0.15	178
300	0.19	162	18.0	156	0.05	3	0.15	176
400	0.18	157	17.6	148	0.05	4	0.16	175
500	0.17	151	17.1	141	0.05	4	0.16	173
600	0.16	146	16.6	134	0.05	4	0.16	172
700	0.15	142	16.0	127	0.05	5	0.16	170
800	0.14	138	15.5	120	0.05	5	0.16	168
900	0.13	134	14.9	114	0.05	5	0.16	166
1000	0.12	131	14.3	107	0.05	5	0.16	163
1100	0.11	128	13.8	101	0.05	5	0.17	161
1200	0.10	126	13.3	95	0.06	4	0.17	158
1300	0.09	124	12.7	90	0.06	4	0.17	156
1400	0.08	123	12.2	84	0.06	3	0.17	153
1500	0.07	122	11.8	79	0.06	2	0.17	151
1600	0.06	123	11.3	74	0.06	1	0.17	148
1700	0.06	124	10.9	69	0.06	0	0.17	145
1800	0.05	128	10.5	64	0.07	-1	0.17	142
1900	0.04	133	10.1	59	0.07	-2	0.17	140
2000	0.04	139	9.8	54	0.07	-4	0.17	137
2100	0.04	146	9.4	50	0.07	-5	0.17	134
2200	0.04	152	9.1	45	0.07	-7	0.17	131
2300	0.04	158	8.8	40	0.08	-8	0.16	128
2400	0.04	164	8.5	36	0.08	-10	0.16	126
2500	0.04	168	8.3	32	0.08	-12	0.16	123
2600	0.04	170	8.0	27	0.08	-13	0.16	120
2700	0.05	172	7.8	23	0.09	-15	0.16	117
2800	0.05	173	7.5	19	0.09	-17	0.16	114
2900	0.05	172	7.3	15	0.09	-19	0.16	112
3000	0.06	172	7.1	11	0.09	-21	0.16	109
3100	0.06	171	6.9	7	0.09	-23	0.16	106
3200	0.06	169	6.7	3	0.10	-25	0.16	103
3300	0.07	166	6.6	-1	0.10	-27	0.16	100
3400	0.07	163	6.4	-6	0.10	-29	0.17	97
3500	0.07	159	6.3	-9	0.10	-32	0.17	94
3600	0.07	155	6.1	-13	0.11	-34	0.17	91
3700	0.08	151	6.0	-17	0.11	-36	0.17	88
3800	0.08	146	5.8	-21	0.11	-38	0.18	85
3900	0.08	141	5.7	-25	0.11	-41	0.18	82
4000	0.08	136	5.6	-29	0.11	-43	0.18	78
4100	0.08	130	5.4	-33	0.12	-46	0.19	75
4200	0.09	125	5.3	-37	0.12	-48	0.19	72
4300	0.09	118	5.2	-41	0.12	-51	0.20	69
4400	0.09	111	5.1	-45	0.12	-53	0.21	65
4500	0.09	104	5.0	-49	0.12	-56	0.21	62
4600	0.09	98	4.9	-53	0.13	-58	0.22	58
4700	0.10	91	4.8	-57	0.13	-61	0.23	55
4800	0.10	84	4.7	-61	0.13	-64	0.24	51
4900	0.10	76	4.6	-65	0.13	-66	0.24	48
5000	0.11	69	4.5	-69	0.13	-69	0.25	44

Continues Next Page. S-Parameter Data Files are available on-line at: [www.mimixbroadband.com](http://www.mimixbroadband.com)

Mimix Broadband, Inc., 10795 Rockley Rd., Houston, Texas 77099  
Tel: 281.988.4600 Fax: 281.988.4615 [mimixbroadband.com](http://mimixbroadband.com)

Page 4 of 7

Characteristic Data and Specifications are subject to change without notice. ©2006 Mimix Broadband, Inc.  
Export of this item may require appropriate export licensing from the U.S. Government. In purchasing these parts, U.S. Domestic customers accept their obligation to be compliant with U.S. Export Laws.

# DC-8.0 GHz InGaP HBT, MMIC or Packaged, Matched Gain Block Amplifier



May 2006 - Rev 23-May-06

**CGB7015-SC (-BD)**  
RoHS

## Typical Scattering Parameters (Vd = +4.8V, Icc = 95 mA, T = 23°C, device in a 50 ohm system)

Frequency (MHz)	S <sub>11</sub>		S <sub>21</sub>		S <sub>12</sub>		S <sub>22</sub>	
	(Mag)	(Ang)	(Mag)	(Ang)	(Mag)	(Ang)	(Mag)	(Ang)
5100	0.11	61	4.4	-73	0.14	-72	0.26	41
5200	0.12	54	4.3	-77	0.14	-74	0.27	37
5300	0.13	48	4.3	-81	0.14	-77	0.28	34
5400	0.13	41	4.2	-85	0.14	-80	0.30	31
5500	0.14	34	4.1	-89	0.14	-83	0.31	27
5600	0.15	28	4.0	-92	0.14	-86	0.32	23
5700	0.16	22	3.9	-96	0.14	-89	0.33	20
5800	0.17	16	3.9	-101	0.15	-92	0.35	17
5900	0.18	10	3.8	-105	0.15	-94	0.36	13
6000	0.19	5	3.7	-108	0.15	-97	0.37	10
6100	0.21	0	3.6	-113	0.15	-100	0.38	6
6200	0.22	-5	3.5	-117	0.15	-103	0.40	3
6300	0.23	-10	3.5	-121	0.15	-106	0.41	-1
6400	0.24	-15	3.4	-124	0.15	-109	0.43	-4
6500	0.25	-20	3.3	-129	0.15	-112	0.44	-7
6600	0.27	-25	3.2	-132	0.15	-115	0.45	-11
6700	0.28	-29	3.2	-136	0.15	-118	0.47	-14
6800	0.29	-34	3.1	-140	0.15	-121	0.48	-17
6900	0.30	-38	3.0	-144	0.15	-124	0.50	-20
7000	0.32	-42	2.9	-148	0.15	-127	0.51	-24
7100	0.33	-46	2.9	-152	0.15	-130	0.52	-27
7200	0.34	-51	2.8	-156	0.15	-133	0.54	-30
7300	0.35	-54	2.7	-160	0.15	-136	0.55	-33
7400	0.36	-58	2.6	-164	0.15	-139	0.56	-36
7500	0.37	-62	2.6	-168	0.15	-142	0.57	-39
7600	0.38	-66	2.5	-172	0.14	-145	0.58	-42
7700	0.39	-70	2.4	-175	0.14	-148	0.60	-45
7800	0.40	-74	2.4	-179	0.14	-150	0.61	-48
7900	0.41	-77	2.3	-177	0.14	-153	0.62	-51
8000	0.42	-81	2.2	-174	0.14	-156	0.63	-54
8100	0.42	-85	2.2	-170	0.14	-159	0.64	-56
8200	0.43	-88	2.1	-166	0.14	-161	0.64	-59
8300	0.44	-91	2.1	-163	0.14	-164	0.65	-62
8400	0.44	-95	2.0	-159	0.13	-167	0.66	-64
8500	0.44	-98	1.9	-155	0.13	-169	0.67	-67
8600	0.45	-102	1.9	-152	0.13	-172	0.68	-70
8700	0.45	-105	1.8	-148	0.13	-174	0.68	-72
8800	0.45	-108	1.8	-145	0.13	-177	0.69	-74
8900	0.45	-111	1.7	-141	0.13	-179	0.69	-77
9000	0.45	-114	1.7	-138	0.12	-178	0.70	-79
9100	0.46	-118	1.6	-134	0.12	-176	0.70	-82
9200	0.45	-121	1.6	-131	0.12	-173	0.71	-84
9300	0.45	-124	1.5	-128	0.12	-171	0.71	-86
9400	0.45	-127	1.5	-124	0.12	-168	0.72	-88
9500	0.45	-130	1.5	-121	0.12	-166	0.72	-90
9600	0.44	-133	1.4	-117	0.12	-164	0.72	-92
9700	0.44	-136	1.4	-114	0.11	-162	0.73	-95
9800	0.44	-140	1.3	-111	0.11	-159	0.73	-97
9900	0.43	-143	1.3	-107	0.11	-157	0.73	-99
10000	0.42	-146	1.3	-104	0.11	-155	0.74	-101

S-Parameter Data Files are available on-line at: [www.mimixbroadband.com](http://www.mimixbroadband.com)

Mimix Broadband, Inc., 10795 Rockley Rd., Houston, Texas 77099  
Tel: 281.988.4600 Fax: 281.988.4615 [mimixbroadband.com](http://mimixbroadband.com)

Page 5 of 7

Characteristic Data and Specifications are subject to change without notice. ©2006 Mimix Broadband, Inc.  
Export of this item may require appropriate export licensing from the U.S. Government. In purchasing these parts, U.S. Domestic customers accept their obligation to be compliant with U.S. Export Laws.

# DC-8.0 GHz InGaP HBT, MMIC or Packaged, Matched Gain Block Amplifier



May 2006 - Rev 23-May-06

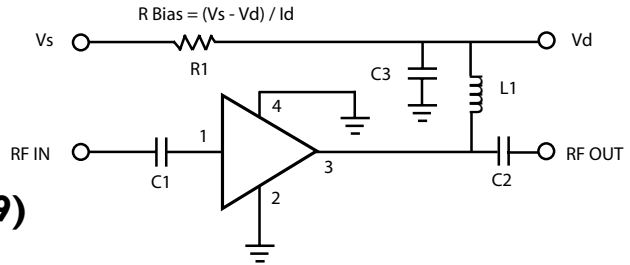
**CGB7015-SC (-BD)**  
RoHS

## Application Circuit

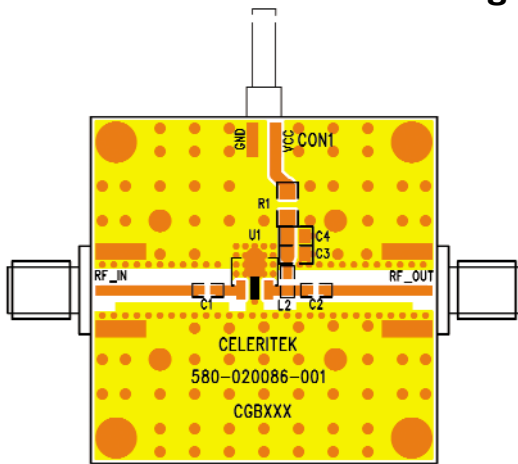
Note: This schematic represents the topology of the application circuit recommended by Mimix.

Recommended Bias Resistor Values for ID = 92 mA				
Supply Voltage (V)	7V	8V	10V	12V
Rbias (R1 Description: 1206 1/4W 1%)	12Ω	37Ω	—	—
Rbias (R1 Description: 1210 1/2W 1%)	—	—	50Ω	79Ω

Note: Rbias provides DC bias stability over temperature.

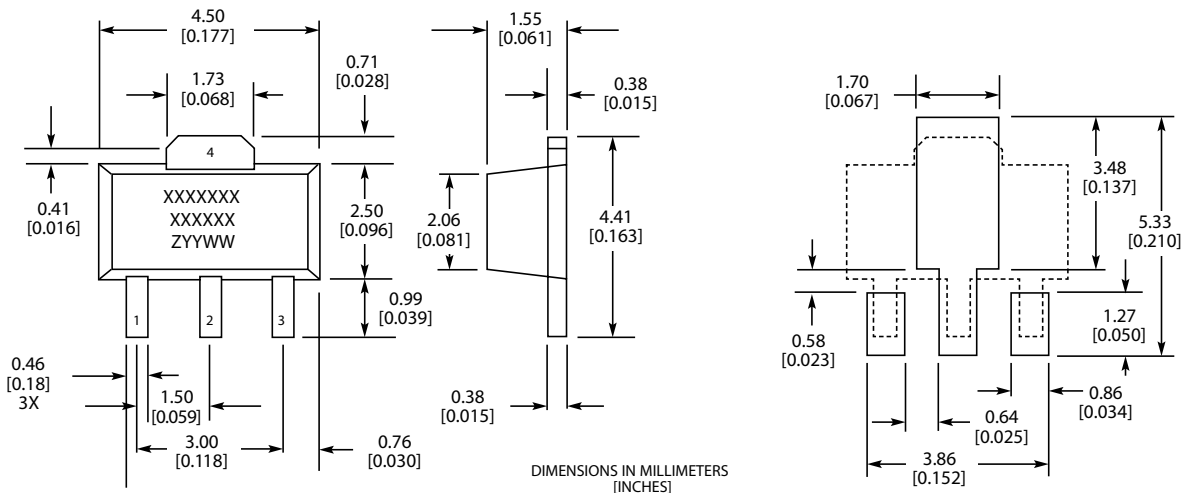


## Evaluation Board - SC Package (SOT-89)



Ref Designator	Value	Description	Size
C1, C2	1000 pF	MCH185A101JK	0805
C3	1.0 μF	VITR 1.0 μF 25V CER CAP 0805 X7R 10%	0805
L1	56 nH	Coilcraft 0603 CS 10%	0603
R1		R Bias = (Vs - Vd) / Id	1206 / 1210
C4		DNP (Do Not Place)	N/A

## Physical Dimensions - SC Package (SOT-89)



MARKINGS:  
 XXXXXX = MIMIX MODEL NO.  
 XXXXXX = WAFER LOT NO.  
 ZYYWW = DATE CODE (YR/WEEK)  
 FIRST LETTER COUNTRY OF ORIGIN IF OTHER THAN USA

Mimix Broadband, Inc., 10795 Rockley Rd., Houston, Texas 77099  
 Tel: 281.988.4600 Fax: 281.988.4615 mimixbroadband.com

Page 6 of 7

Characteristic Data and Specifications are subject to change without notice. ©2006 Mimix Broadband, Inc.  
 Export of this item may require appropriate export licensing from the U.S. Government. In purchasing these parts, U.S. Domestic customers accept their obligation to be compliant with U.S. Export Laws.

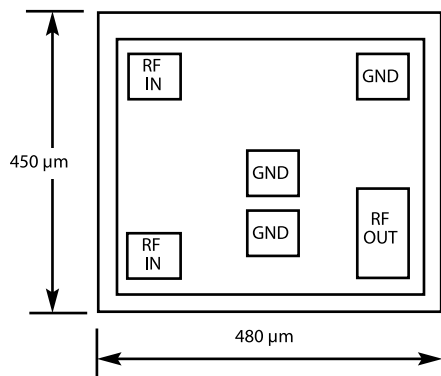
# DC-8.0 GHz InGaP HBT, MMIC or Packaged, Matched Gain Block Amplifier

Mimix  
BROADBAND™

May 2006 - Rev 23-May-06

CGB7015-SC (-BD)  
RoHS

## Physical Dimensions - BD (Bare Die)



Notes:  
RF OUT bonding pad is 75 μm x 155 μm.  
All other pads are 75 μm x 75 μm.



## Ordering Information

Part Number for Ordering	Description
CGB7015-BD	Bare die in GelPak
CGB7015-SC-0G00	Matte Tin plated RoHS compliant SOT-89 surface mount package in bulk quantity
CGB7015-SC-0G0T	Matte Tin plated RoHS compliant SOT-89 surface mount package in tape and reel
CGB7015-SP-0G00	Matte Tin plated RoHS compliant SOT-86 surface mount package in bulk quantity
CGB7015-SP-0G0T	Matte Tin plated RoHS compliant SOT-86 surface mount package in tape and reel
PB-CGB7015-SC-0000	Evaluation Board for SOT-89 packaged device with SMA connectors
PB-CGB7015-SP-0000	Evaluation Board for SOT-86 packaged device with SMA connectors

We also offer the plastic packages with SnPb (Tin-Lead) or NiPdAu plating. Please contact your regional sales manager for more information regarding different plating types