

Tyco / Electronics  
 Raychem Circuit Protection  
 308 Constitution Drive  
 Menlo Park, CA 94025-1164  
 Phone: 800-227-4856  
 Fax: 800-227-4866

**PolySwitch®**  
**PTC Devices**  
 Overcurrent Protection Device

**PRODUCT: nanoSMDM050**

DOCUMENT: SCD 24570  
 PCN: 481498  
 REV LETTER: E  
 REV DATE: AUGUST 10, 2001  
 PAGE NO.: 1 OF 1

**Specification Status: Released**

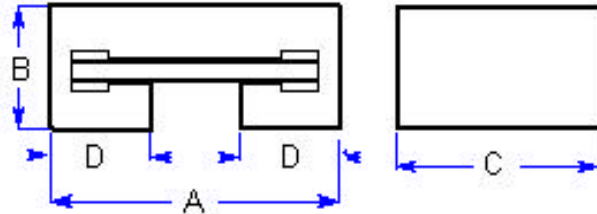
**Maximum Electrical Rating**

**Voltage: 6.0V<sub>DC</sub> MAX**

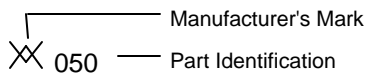
**Current: 40A**

**Notes:**

1. All terminations are Gold plated.  
 Partial coverage of plating with solder may occur without effect on solderability or electrical performance
2. Devices cannot be wave soldered.
3. Drawing not to scale



**Marking:**



**TABLE I. DIMENSIONS:**

	A		B		C		D	
	MIN	MAX	MIN	MAX	MIN	MAX	MIN	MAX
mm:	3.0	3.4	0.8	1.2	1.4	1.8	0.75	1.05
in.*	(0.118)	(0.134)	(0.032)	(0.047)	(0.055)	(0.071)	(0.030)	(0.041)

\*Rounded off approximation

**TABLE II. PERFORMANCE RATINGS:**

CURRENT RATINGS**						TIME TO TRIP **	RESISTANCE VALUES	TRIPPED-STATE POWER DISSIPATION**	
AMPERES AT 0°C		AMPERES AT 25°C		AMPERES AT 60°C		SECONDS AT 25°C, 8.0A MAX	OHMS AT 25°C		WATTS AT 25°C, 6.0V MAX
HOLD	TRIP	HOLD	TRIP	HOLD	TRIP		MIN	MAX*	
0.59	1.18	0.50	1.00	0.35	0.70	0.10	0.15	0.70	0.6

\*Maximum resistance is measured 1 hour after reflow.

\*\* Values specified were determined using PCB's with 0.030"X1.5 ounce copper traces.

Reference Documents: PS300  
 Precedence: This specification takes precedence over documents referenced herein.  
 Effectivity: Reference documents shall be the issue in effect on the date of invitation for bid.  
 CAUTION: Operation beyond the rated voltage or current may result in rupture, electrical arcing or flame.