

FEATURES

- Improved version to HG4115/4138 series
- Up to 30A switching capacity
- DC coil and AC coil version available
- Meets UL873/508 spacing

TYPICAL APPLICATIONS

- Industrial control
- Commercial applications
- Home appliances

CONTACT RATING

| Form | 1 Form A (H) | 1 Form B (D) | 1 Form C (Z) | |
|--------------------|---------------------------|---------------------------|---------------------------|---------------------------|
| | | | NO | NC |
| Resistive | 30A, 277VAC 30A, 30VDC | 15A, 277VAC 10A, 30VDC | 20A, 277VAC 20A, 30VDC | 10A, 277VAC 10A, 30VDC |
| UL General Purpose | 30A, 240VAC | 15A, 240VAC | 20A, 240VAC | 15A, 240VAC |
| Resistive Heater | 25A, 240VAC | 10A, 240VAC | 15A, 240VAC | 7.5A, 240VAC |

UL/CSA RATING (PENDING)

| Load Type | Voltage | 1 Form A (H) | 1 Form B (D) | 1 Form C (Z) | |
|-----------------|----------------------------|----------------------|---------------|----------------------|---------------|
| | | | | NO | NC |
| General Purpose | 240VAC 277VAC | 30A 30A | 15A 30A | 20A 30A | 15A 30A |
| Resistive | 277VAC 30VDC | 30A 20A | 20A 20A | 20A 20A | 15A 10A |
| Motor | 277VAC 240VAC 125VAC | 0.75HP 2HP 1HP | 1HP 0.25HP | 0.75HP 2HP 1HP | 1HP 0.25HP |
| LRA/FLA | 240VAC 125VAC | 80A/30A 98A/22A | 30A/12A | 50A/20A | 20A/9A |
| Tungsten | 277VAC 120VAC | 5.4A 8.3A | | 3.6A 5.6A | |
| Ballast | 277VAC | 10A | 3A | 6.7A | 2A |
| Pilot Duty | 120VAC | 470VA | | 315VA | |

CONTACT DATA

| | | |
|----------------------------|---------------------------|----------------------|
| Material | AgCdO, AgSnOInO | |
| Initial Contact Resistance | 50 mΩ, max. at 0.1A, 6VDC | |
| Service Life | Mechanical | 10 ⁷ ops. |
| | Electrical | 10 ⁵ ops. |

CHARACTERISTICS

| | |
|-----------------------|---|
| Operate Time | 15 ms. max. |
| Release Time | 15 ms. max. |
| Insulation Resistance | 1000 MΩ, at 500 VDC, 50%RH |
| Dielectric Strength | 1500 Vrms, 1 min. between open contacts 2500 Vrms, 1 min. between coil and contacts for DC coil 1500 Vrms, 1 min. between coil and contacts for AC coil |
| Shock Resistance | 20 g, 11ms. |
| Vibration Resistance | DA 1.5mm, 20 - 200 Hz |
| Power Consumption | DC Standard: 1W; DC Sensitive: 0.9W; AC: 2VA, approx. |
| Ambient Temperature | -55°C to 85°C operating; -55°C to 130°C storage |
| Weight | Open: 20 g; Covered: 25 g, approx. |

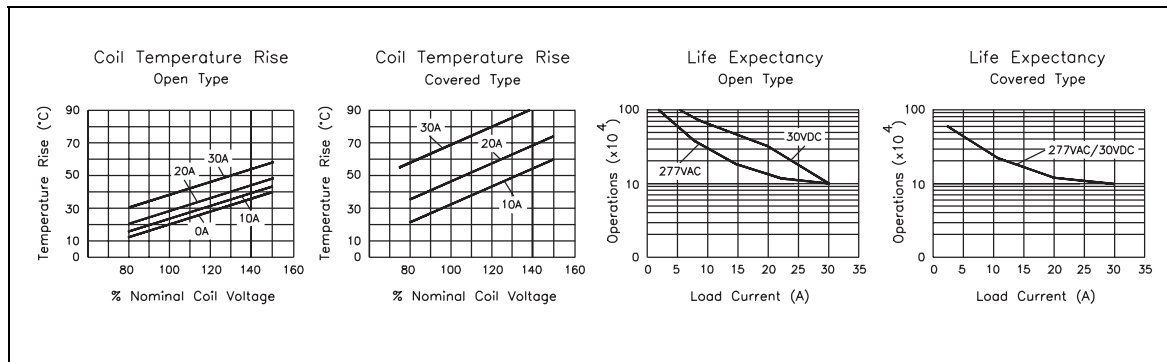
COIL DATA

| Type | Coil Voltage Code | Nominal Voltage (VDC/VAC) | Resistance ($\Omega \pm 10\%$) | | Must Operate Voltage max. (VDC) | Must Release Voltage min. (VDC) |
|------|-------------------|---------------------------|----------------------------------|-----------|---------------------------------|---------------------------------|
| | | | Standard | Sensitive | | |
| DC | 005 | 5 | 25 | 27 | 3.75 | 0.5 |
| | 006 | 6 | 36 | 40 | 4.5 | 0.6 |
| | 009 | 9 | 81 | 97 | 6.75 | 0.9 |
| | 012 | 12 | 144 | 155 | 9.0 | 1.2 |
| | 015 | 15 | 225 | 256 | 11.25 | 1.5 |
| | 018 | 18 | 324 | 380 | 13.5 | 1.8 |
| | 022 | 22 | 484 | 545 | 16.5 | 2.2 |
| | 024 | 24 | 576 | 660 | 18.0 | 2.4 |
| AC | 048 | 48 | 2304 | 2560 | 36.0 | 4.8 |
| | 110 | 110 | 12100 | 13450 | 82.5 | 11.0 |
| | 012A | 12 | 26 | | 10.2 | 1.8 |
| | 024A | 24 | 106 | | 20.4 | 3.6 |
| | 110A | 110 | 2750 | | 93.5 | 16.0 |
| | 220A | 220 | 11000 | | 187.0 | 33.0 |

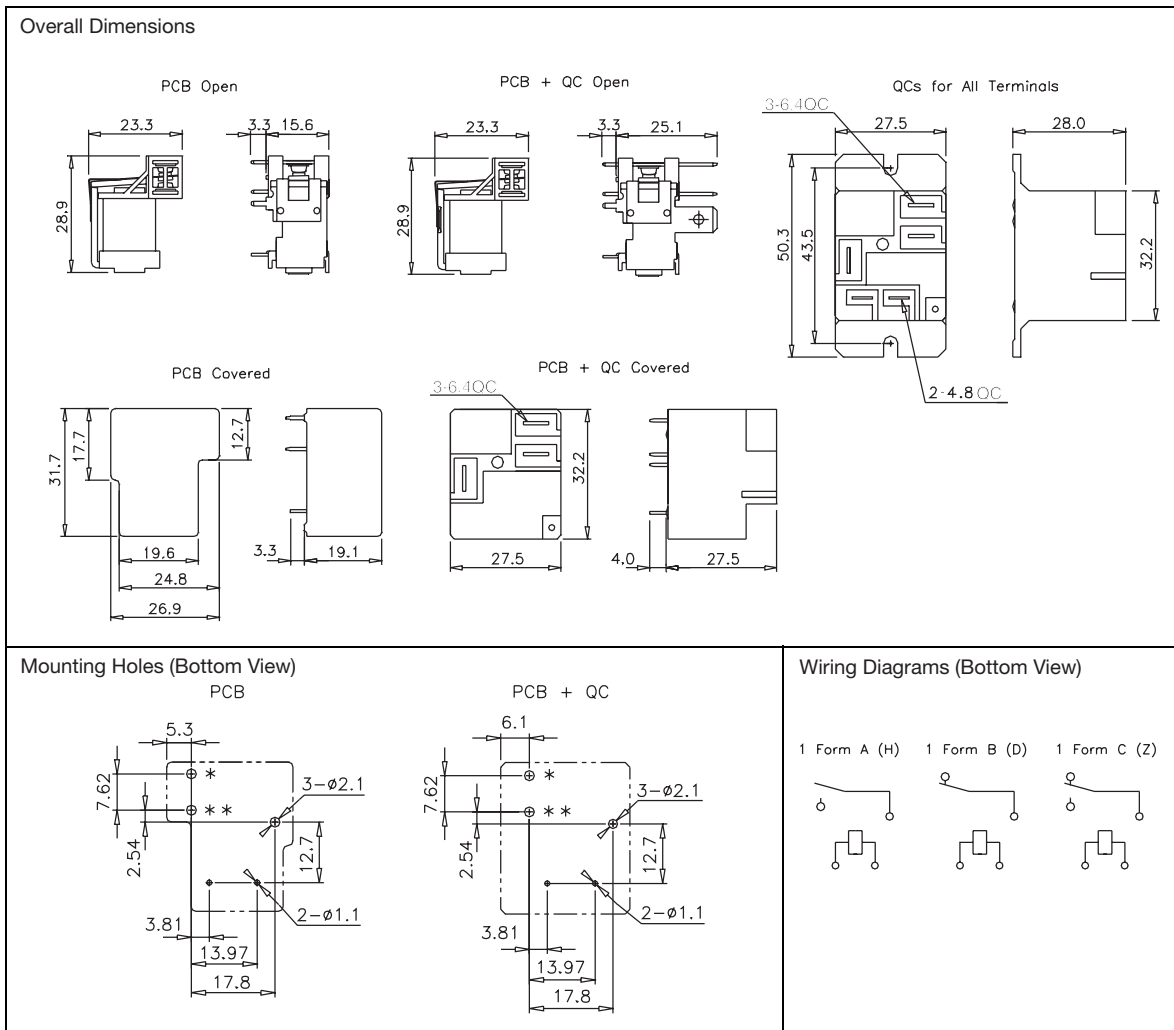
ORDERING DESIGNATION

| | | | | | | | | | |
|---|----------|-----|-----|---|---|---|---|---|---|
| Example: | HG4234 / | 012 | A - | Z | 1 | C | A | L | F |
| Model | | | | | | | | | |
| Coil Voltage Code | | | | | | | | | |
| DC / AC | | | | | | | | | |
| Nil: DC Coil; A: AC Coil | | | | | | | | | |
| Contact Form | | | | | | | | | |
| H: 1 Form A; D: 1 Form B; Z: 1 Form C | | | | | | | | | |
| Version | | | | | | | | | |
| Nil: Open; 1: Sealed; 2: Dust Cover | | | | | | | | | |
| Contact Material | | | | | | | | | |
| C: AgCdO; S: AgSnOInO | | | | | | | | | |
| Mounting & Termination Code | | | | | | | | | |
| A: PCB B: PCB+QCs for Contacts C: QCs for All Terminals | | | | | | | | | |
| DC Coil Sensitivity | | | | | | | | | |
| Nil: Standard, 1W L: Sensitive, HG4115/4138 Compatible, 0.9W | | | | | | | | | |
| Thermal Class | | | | | | | | | |
| Nil: UL Class B; F: UL Class F | | | | | | | | | |

REFERENCE CURVES



OVERALL DIMENSIONS, MOUNTING HOLES AND WIRING DIAGRAMS (mm)



NOTES

1. All parameters, unless otherwise specified, are measured at ambient temperature 23°C.
2. In mounting holes drawing, the * hole is not needed for 1 Form A, the ** hole is not needed for 1 Form B.
3. To exert optimum electrical life, please remove the tape tab/knock-off of sealed version after cleaning process.
4. Custom-made services available with operational quantity. Please let us know your special requirements.
5. Specifications subject to change without prior notice.