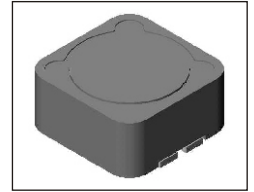


SMT Power Inductor

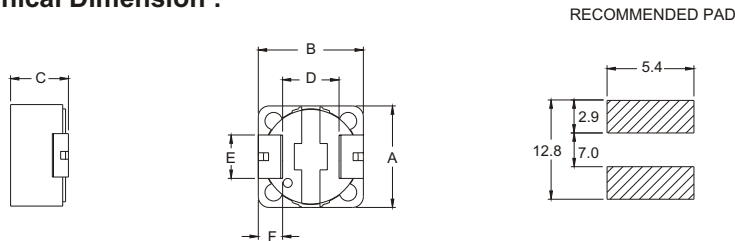
SIQ127RL Type

Features

- Low profile(8.0mm max. height), high current(10A,1.2uH) SMD type.
- Magnetically shielded, suitable for high density mounting.
- High energy storage and low DCR.
- Provided with embossed carrier tape packing.
- Ideal for power source circuits, DC-DC converter, DC-AC inverters inductor applications.
- In addition to the standard versions shown here, customized inductors are available to meet your exact requirements.



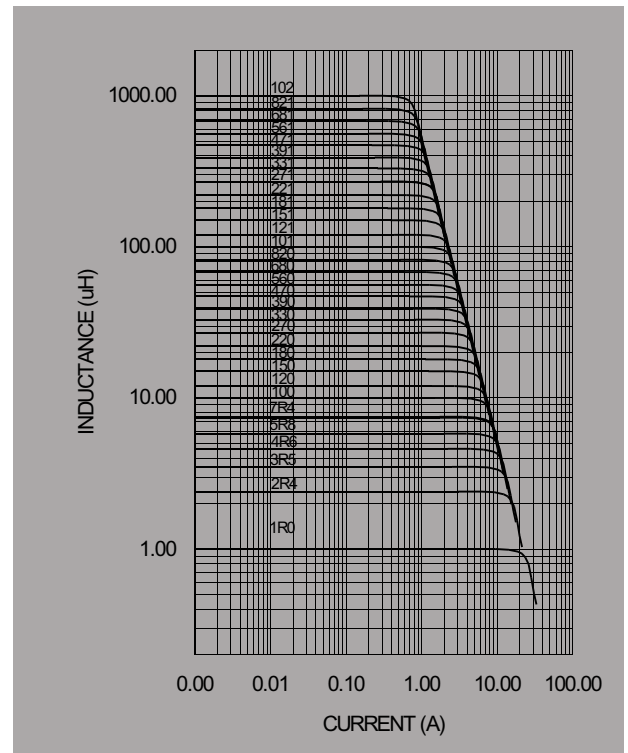
Mechanical Dimension :



UNIT:mm/inch
 A = 12.2±0.3/0.480±0.012
 B = 12.2±0.3/0.480±0.012
 C = 8.0/0.315 Max.
 D = 7.6±0.3/0.299±0.012
 E = 5.0/0.197
 F = 2.2/0.087

Electrical Characteristics : At 25°C : 1.0~7.4uH 100KHz, 0.1V 10~1000uH 1KHz, 1V

PART NO.	L1 (uH)	DCR (mΩ) MAX	I _{RATED} ² (A ²)
SIQ127RL -1R0	1.0	6.5	14.00
SIQ127RL -2R4	2.4	10.5	10.30
SIQ127RL -3R5	3.5	12.4	9.30
SIQ127RL -4R6	4.6	13.8	9.10
SIQ127RL -5R8	5.8	16.2	8.60
SIQ127RL -7R4	7.4	17.7	7.40
SIQ127RL -100	10	19.5	6.70
SIQ127RL -120	12	21.3	6.45
SIQ127RL -150	15	26.4	5.65
SIQ127RL -180	18	28.0	5.10
SIQ127RL -220	22	36.4	4.70
SIQ127RL -270	27	41.6	4.20
SIQ127RL -330	33	53.3	3.90
SIQ127RL -390	39	60.5	3.50
SIQ127RL -470	47	78.0	3.25
SIQ127RL -560	56	90.0	2.90
SIQ127RL -680	68	120.0	2.60
SIQ127RL -820	82	119.0	2.40
SIQ127RL -101	100	151.0	2.10
SIQ127RL -121	120	169.0	1.90
SIQ127RL -151	150	227.0	1.80
SIQ127RL -181	180	299.0	1.55
SIQ127RL -221	220	338.0	1.45
SIQ127RL -271	270	419.0	1.30
SIQ127RL -331	330	471.0	1.20
SIQ127RL -391	390	572.0	1.10
SIQ127RL -471	470	741.0	1.00
SIQ127RL -561	560	852.0	0.95
SIQ127RL -681	680	1130.0	0.85
SIQ127RL -821	820	1240.0	0.75
SIQ127RL -102	1000	1500.0	0.70



1. Tolerance of inductance
1.0~7.4uH+40/-20%, 10~1000uH±20%
2. I_{RATED} : rated current ΔL<25% , ΔT<45°Cat I_{RATED}.
3. Operating temperature : -20°C to 105°C (including self-temperature rise)



DELTA ELECTRONICS, INC.

(TAOYUAN PLANT CPBG) 252, SAN YING ROAD, KUEISAN INDUSTRIAL ZONE, TAOYUAN SHIEN, 333, TAIWAN, R.O.C.

TEL: 886-3-3591968; FAX: 886-3-3591991

<http://www.deltawww.com>