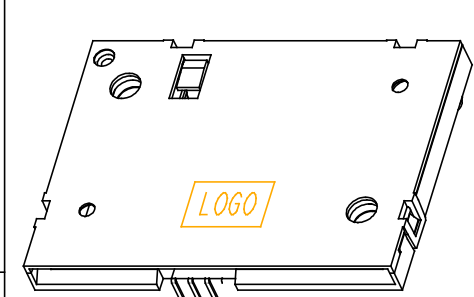
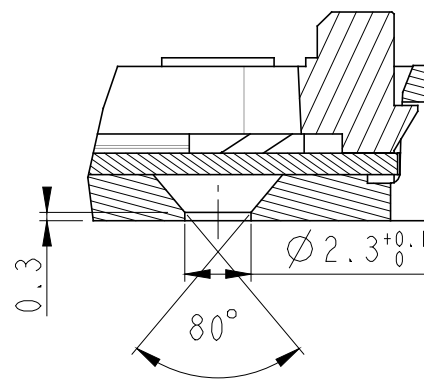


PART NUMBER	LEAD FREE VERSION	MARKING
7432E0225S01	7432E0225S01LF	YES
7332E0225S01	7332E0225S01LF	NO

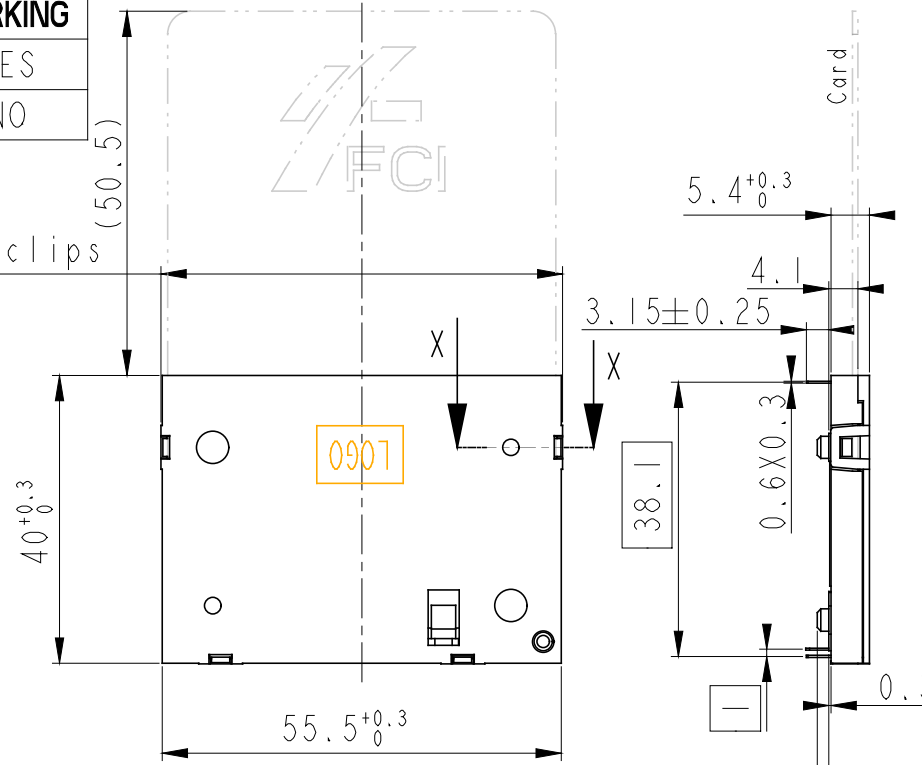
Tous droits strictement réservés. Reproduction ou communication à des tiers interdite sans la permission écrite de son propriétaire. Propriété de FCI. Droits de reproduction FCI.



55.9^{+0.2} on clips



SECTION X-X
SCALE 4:1



GENERAL :

High cycle life duration smart card connector with landing type contacts mechanism. The landing type connector also provides the feature of recessed contacts when card is not inserted which protects them against vandalism.
Smart card for reference purposes only.

ELECTRICAL PROPERTIES:

Insulation resistance : > 1000MΩ
Dielectric withstanding voltage : >750 Vrms
Current carrying capacity : Min 10μA, Max 1A
Contact resistance : < 100mΩ

MECHANICAL PROPERTIES :

Operating force : Insertion : F < 10N
Withdrawal : 1 < F < 10N
Contact Normal force : 0.2 < F < 0.3 for 0.6mm of deflection
Durability : 200 000 mating cycles

MATERIAL :

Head reader : PA4/6, Colour Black, Rated UL94V0
Cover : PA4/6, Colour Grey, Rated UL94V0
Contacts : Copper alloy,
Plating : 2.5μm Nickel min. all over
2μm Gold min. on contact area
3μm SnPb(60/40) min. on solder tails (FOR LEADED VERSION)
3μm matte tin min. on solder tails (FOR LEAD FREE VERSION)

ENVIRONMENT :

Operating temperature : -40°C / +85°C
Climatic conditions : UTE 93-421

PACKAGING :

Plastic cavity tray

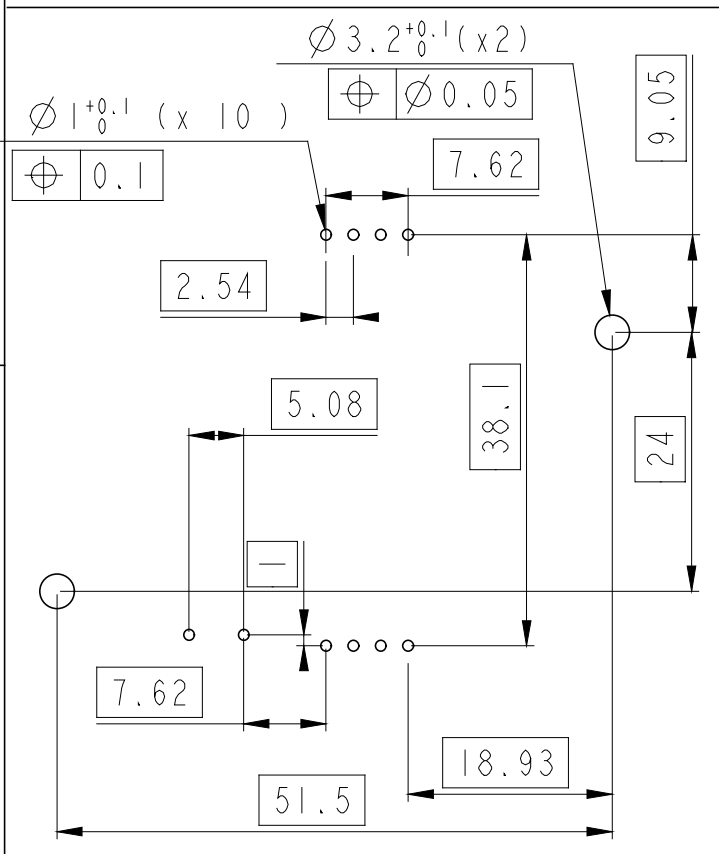
LEAD FREE VERSION:

"This product meets European Union Directives and other country regulations as described in GS-22-008"

The housing will withstand exposure to 260°C peak temperature for 3-5 seconds in a wave solder application with a 1.6mm minimum thick circuit board.

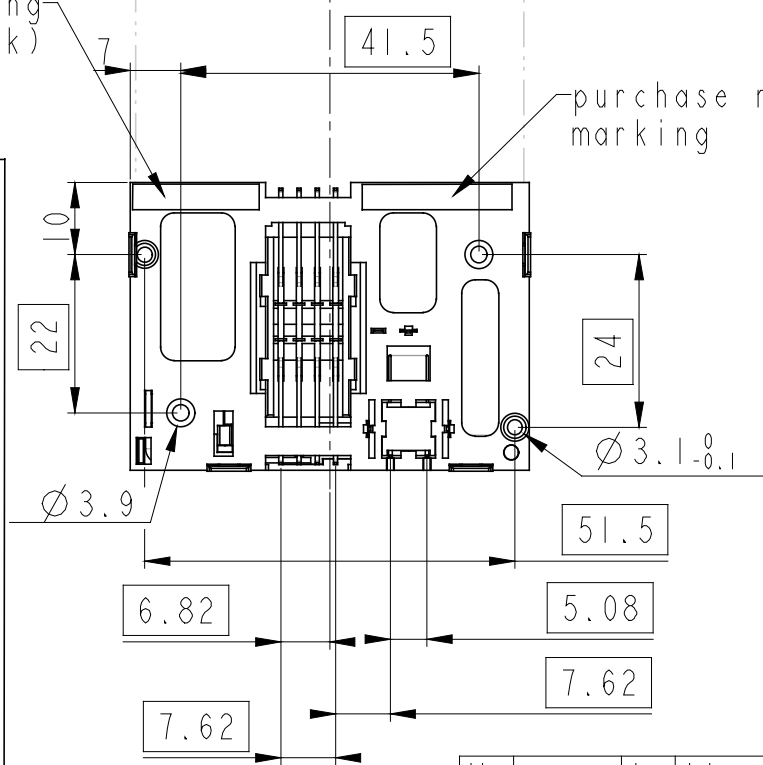


Recommended PCB Layout (Component side)



manufacturing date (year-week)

purchase number marking



General Tolerances			
0 to 10mm:	±0.1mm		
10 to 30mm:	±0.15mm		
30 to 60mm:	±0.2mm		
60 and more:	±0.3mm		

ltr	ecn no	dr	date
A	F20307	DLE	02/04/29
B	F20341	DLE	02/06/04
C	LS3077	MPE	03/09/17
D	LS3088	MPE	03/10/13
E	105-0176	NT	05/09/30
-	-	-	-
-	-	-	-

		www.fciconnect.com	surface -- ✓ ISO 1302	tolerance ISO 406 ISO 1101	projection 	mm ↔
Dr	J.TARON	02-09-17	Product family	MOBILE I/O	size	Scale
Eng	LE GALLIC	02/10/11	Spec ref	--	A3	1:1
Chr	N.TWENCY	05/09/30	Material	SEE NOTES	ECN	105-0176
Appr	N.TWENCY	05/09/30				
Title			E02 WITH PEG		Rev.	
+ Description			SMART CARD READER VXX 27790		E	
catalog no			See Table	CUSTOMER COPY	sheet 1 of 1	
				dwg no	VJW54004	

All rights strictly reserved. Reproduction or issue to third parties in any form whatever is not permitted without written authority from the proprietor. Property of FCI. Copyright FCI.