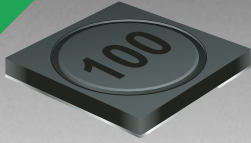


RoHS COMPLIANT



BOURNS®

Features

- Available in E6 values
- Mounting height of only 1.15 mm
- Inductance value to 0.47 μH
- RoHS compliant*

Applications

- Input/output of DC/DC converters
- Power supplies for:
 - Portable communication equipment
 - Camcorders
 - LCD TVs
 - Car radios

SRR4011 Series - Shielded SMD Power Inductors

Electrical Specifications

| Bourns Part No. | Inductance 100 kHz | | Q Typ. | Test Frequency (MHz) | SRF Min. (MHz) | RDC Max. (Ω) | I rms Max. (A) | I sat Typ. (A) |
|-----------------|--------------------|----------|-----------|----------------------------|----------------------|-----------------------------|----------------------|----------------------|
| | (μH) | Tol. % | | | | | | |
| SRR4011-R47YL | 0.47 | ± 30 | 7 | 25.2 | 221 | 0.030 | 3.20 | 3.80 |
| SRR4011-1R2YL | 1.20 | ± 30 | 10 | 7.96 | 133 | 0.048 | 2.70 | 2.50 |
| SRR4011-1R5YL | 1.50 | ± 30 | 11 | 7.96 | 121 | 0.056 | 2.30 | 2.10 |
| SRR4011-2R2YL | 2.20 | ± 30 | 11 | 7.96 | 92 | 0.075 | 2.00 | 1.80 |
| SRR4011-3R3YL | 3.30 | ± 30 | 10 | 7.96 | 67 | 0.110 | 1.60 | 1.40 |
| SRR4011-4R7YL | 4.70 | ± 30 | 13 | 7.96 | 61 | 0.165 | 1.35 | 1.20 |
| SRR4011-6R2YL | 6.20 | ± 30 | 7 | 7.96 | 51 | 0.195 | 1.20 | 1.00 |
| SRR4011-8R2YL | 8.20 | ± 30 | 8 | 7.96 | 39 | 0.215 | 1.10 | 0.92 |
| SRR4011-100YL | 10.00 | ± 30 | 14 | 2.52 | 41 | 0.240 | 1.00 | 0.83 |
| SRR4011-150YL | 15.00 | ± 30 | 11 | 2.52 | 33 | 0.400 | 0.90 | 0.70 |
| SRR4011-220YL | 22.00 | ± 30 | 13 | 2.52 | 23 | 0.580 | 0.60 | 0.57 |
| SRR4011-330YL | 33.00 | ± 30 | 15 | 2.52 | 20 | 0.860 | 0.55 | 0.47 |
| SRR4011-470YL | 47.00 | ± 30 | 10 | 2.52 | 18 | 1.250 | 0.48 | 0.40 |
| SRR4011-680YL | 68.00 | ± 30 | 12 | 2.52 | 14 | 1.800 | 0.35 | 0.32 |
| SRR4011-820YL | 82.00 | ± 30 | 13 | 2.52 | 11 | 2.200 | 0.33 | 0.30 |
| SRR4011-101YL | 100.00 | ± 30 | 18 | 0.796 | 11 | 2.400 | 0.31 | 0.27 |
| SRR4011-151YL | 150.00 | ± 30 | 39 | 0.796 | 8 | 3.800 | 0.25 | 0.22 |

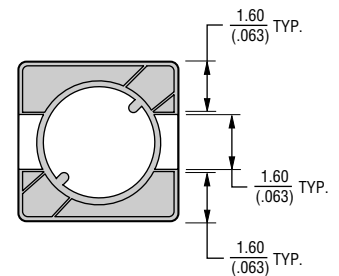
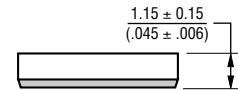
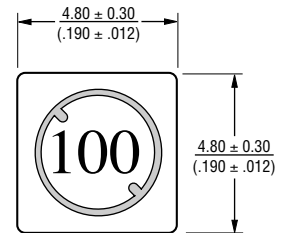
General Specifications

Test Voltage.....0.1 V
 Reflow Soldering ...230 °C, 50 sec. max.
 Operating Temperature -40 °C to +125 °C
 (Temperature rise included)
 Storage Temperature...-40 °C to +125 °C
 Resistance to Soldering Heat
260 °C for 10 sec.

Materials

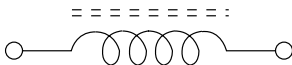
CoreFerrite DR and RI
 WireEnameled copper wire 130
 Terminal.....Ag/Ni/Sn
 Rated Current
Ind. drop 30 % typ. at Isat
 Temperature Rise40 °C max.
 at rated I rms
 Packaging1200 pcs. per reel

Product Dimensions

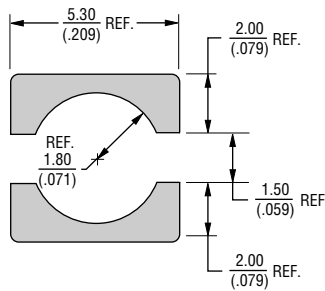


DIMENSIONS: $\frac{\text{MM}}{\text{(INCHES)}}$

Electrical Schematic



Recommended Layout

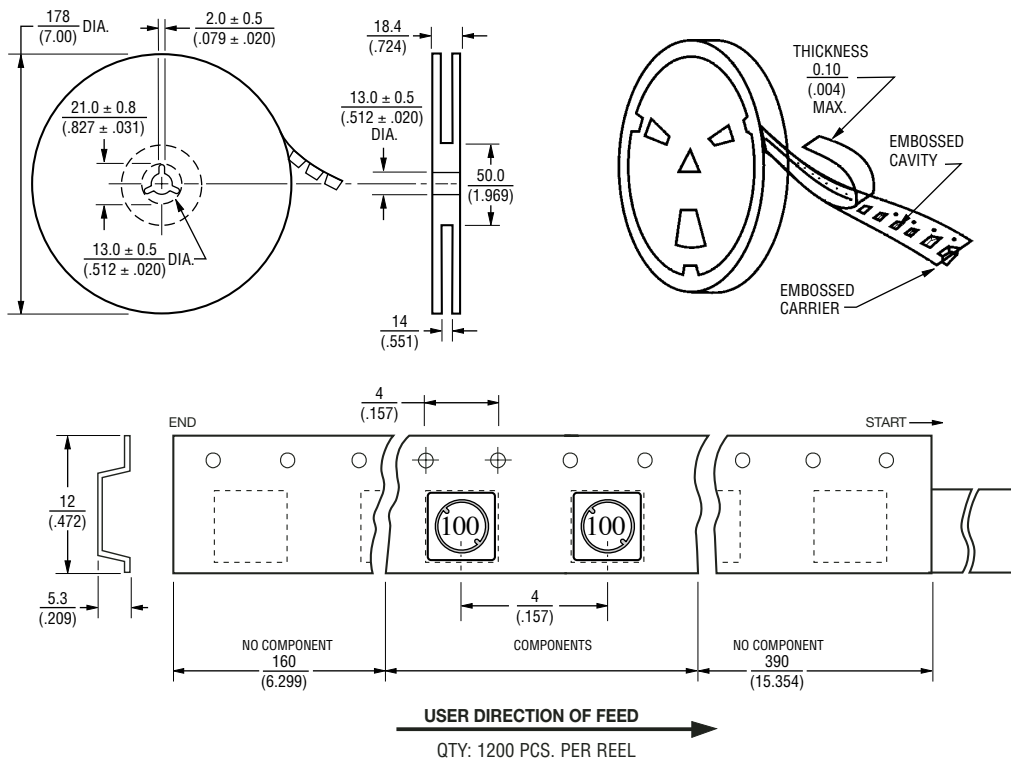


*RoHS Directive 2002/95/EC Jan 27 2003 including Annex
 Specifications are subject to change without notice.
 Customers should verify actual device performance in their specific applications.

SRR4011 Series - Shielded SMD Power Inductors

BOURNS®

Packaging Specifications



DIMENSIONS: $\frac{\text{MM}}{\text{(INCHES)}}$

REV. 05/05

Specifications are subject to change without notice.
Customers should verify actual device performance in their specific applications.