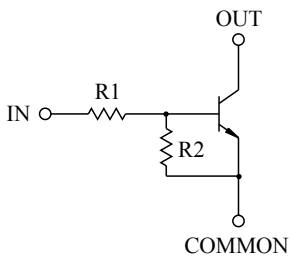


SWITCHING APPLICATION.
INTERFACE CIRCUIT AND DRIVER CIRCUIT APPLICATION.

FEATURES

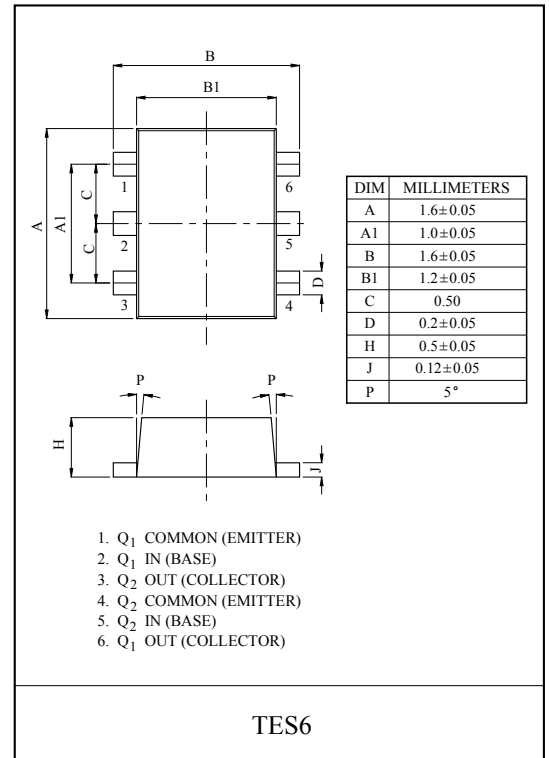
- With Built-in Bias Resistors.
- Simplify Circuit Design.
- Reduce a Quantity of Parts and Manufacturing Process.
- High Packing Density.

EQUIVALENT CIRCUIT

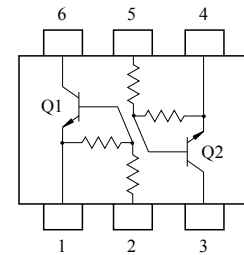


BIAS RESISTOR VALUES

TYPE NO.	R1(kΩ)	R2(kΩ)
KRC851E	4.7	4.7
KRC852E	10	10
KRC853E	22	22
KRC854E	47	47
KRC855E	2.2	47
KRC856E	4.7	47



EQUIVALENT CIRCUIT (TOP VIEW)



MAXIMUM RATING (Ta=25°C)

CHARACTERISTIC		SYMBOL	RATING	UNIT
Output Voltage	KRC851E ~ 856E	V_O	50	V
Input Voltage	KRC851E	V_I	20, -10	V
	KRC852E		30, -10	
	KRC853E		40, -10	
	KRC854E		40, -10	
	KRC855E		12, -5	
	KRC856E		20, -5	
Output Current	KRC851E ~ 856E	I_O	100	mA
Power Dissipation		P_D^*	200	mW
Junction Temperature		T_j	150	°C
Storage Temperature Range		T_{stg}	-55 ~ 150	°C

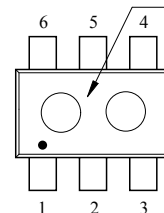
* Total Rating.

MARK SPEC

TYPE	KRC851E	KRC852E	KRC853E	KRC854E	KRC855E	KRC856E
MARK	NA	NB	NC	ND	NE	NF

Marking

Type Name



KRC851E~KRC856E

ELECTRICAL CHARACTERISTICS (Ta=25°C)

CHARACTERISTIC		SYMBOL	TEST CONDITION	MIN.	TYP.	MAX.	UNIT
Output Cut-off Current	KRC851E ~ 856E	$I_{O(OFF)}$	$V_O=50V, V_I=0$	-	-	500	nA
DC Current Gain	KRC851E	G_I	$V_O=5V, I_O=10mA$	30	55	-	
	KRC852E			50	80	-	
	KRC853E			70	120	-	
	KRC854E			80	200	-	
	KRC855E			80	200	-	
	KRC856E			80	200	-	
Output Voltage	KRC851E ~ 856E	$V_{O(ON)}$	$I_O=10mA, I_I=0.5mA$	-	0.1	0.3	V
Input Voltage (ON)	KRC851E	$V_{I(ON)}$	$V_O=0.2V, I_O=5mA$	-	1.5	2.0	V
	KRC852E			-	1.8	2.4	
	KRC853E			-	2.1	3.0	
	KRC854E			-	2.8	5.0	
	KRC855E			-	0.8	1.1	
	KRC856E			-	0.9	1.3	
Input Voltage (OFF)	KRC851E ~ 854E	$V_{I(OFF)}$	$V_O=5V, I_O=0.1mA$	1.0	1.2	-	V
	KRC855E ~ 856E			0.5	0.65	-	
Transition Frequency	KRC851E ~ 856E	f_T^*	$V_O=10V, I_O=5mA$	-	200	-	MHz
Input Current	KRC851E	I_I	$V_I=5V$	-	-	1.8	mA
	KRC852E			-	-	0.88	
	KRC853E			-	-	0.36	
	KRC854E			-	-	0.18	
	KRC855E			-	-	3.6	
	KRC856E			-	-	1.8	

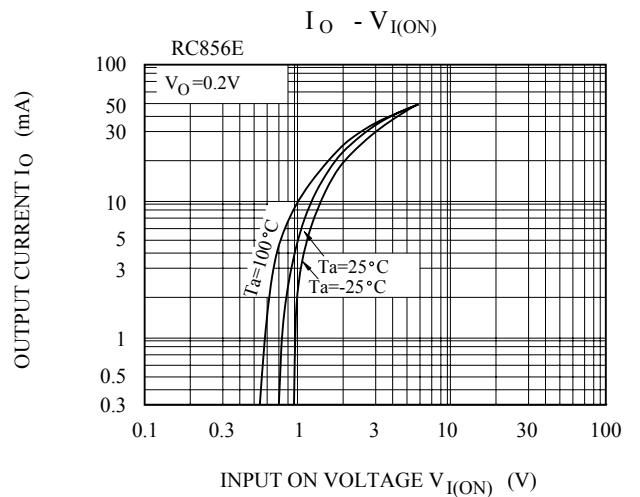
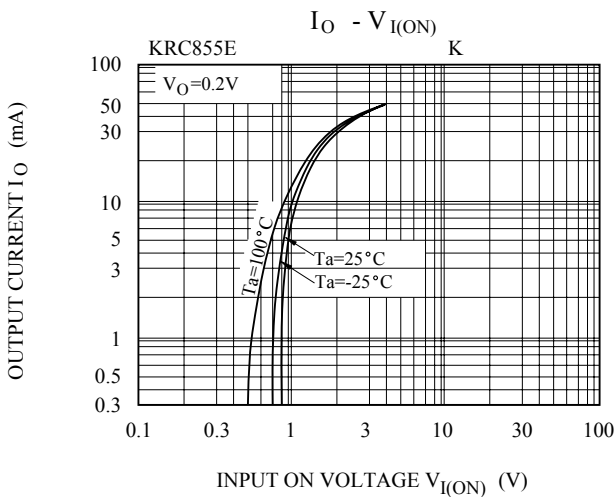
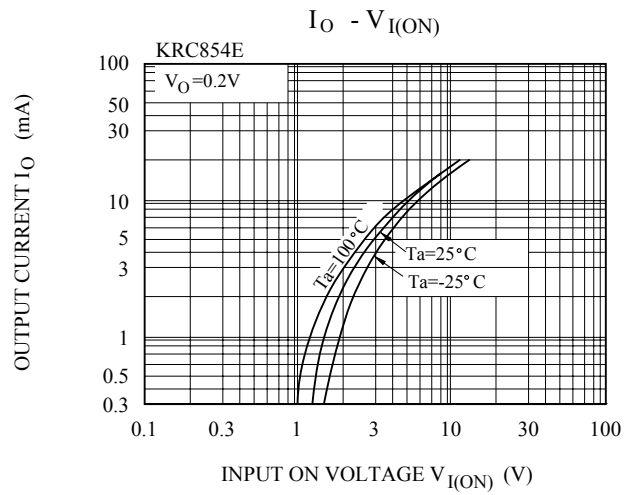
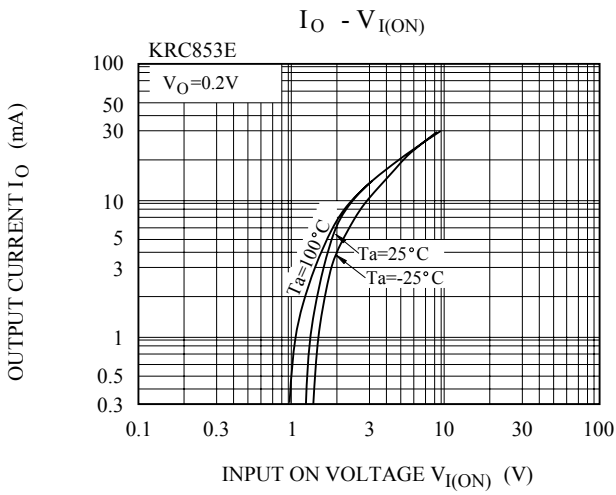
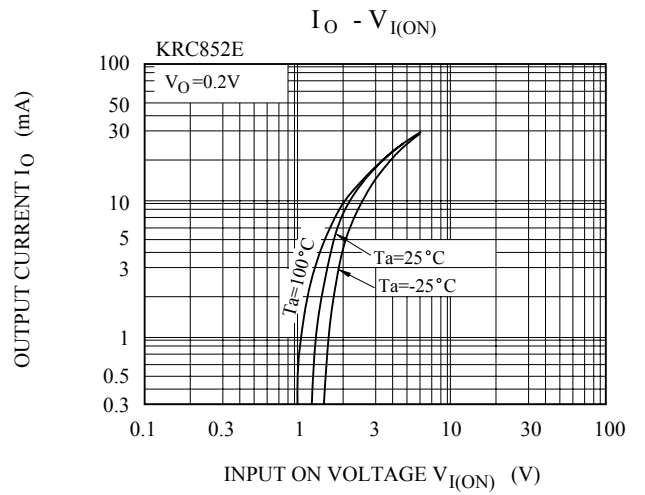
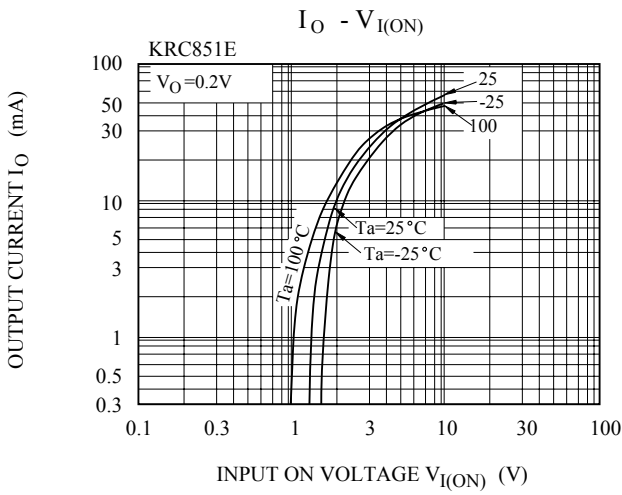
Note : * Characteristic of Transistor Only.

KRC851E~KRC856E

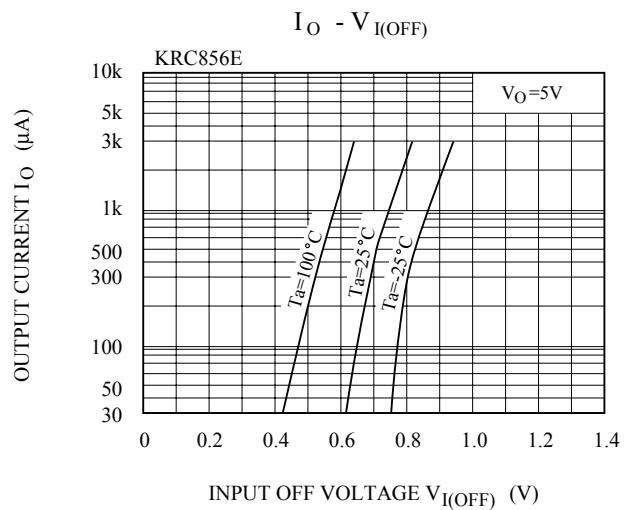
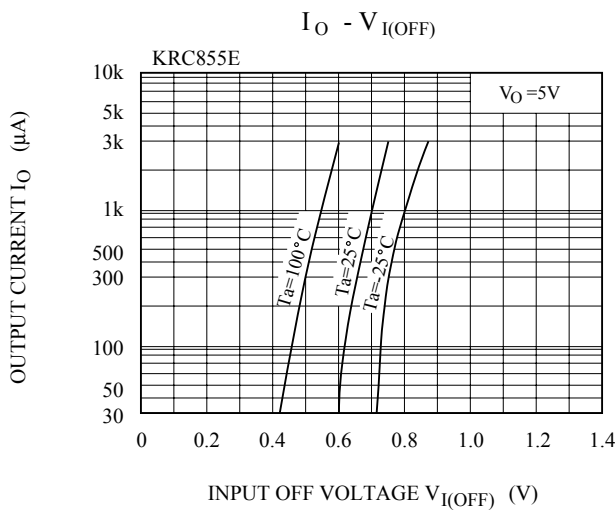
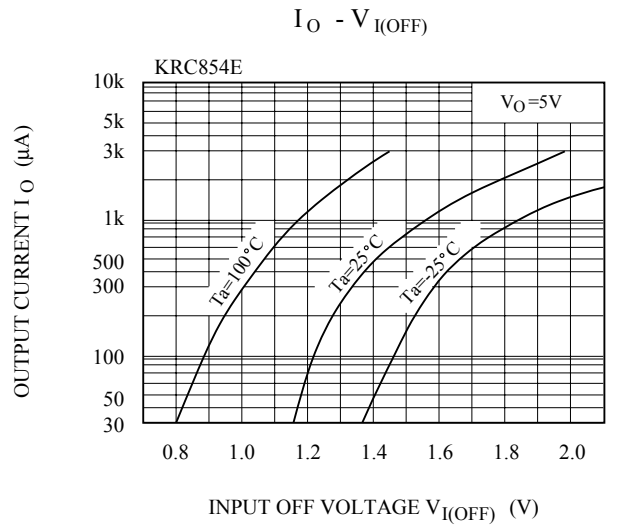
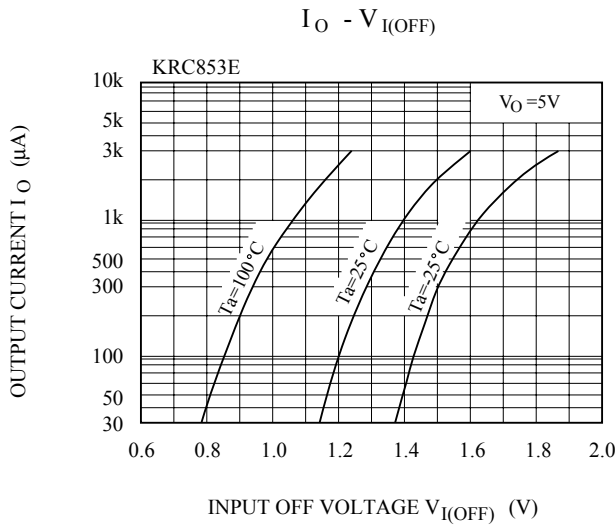
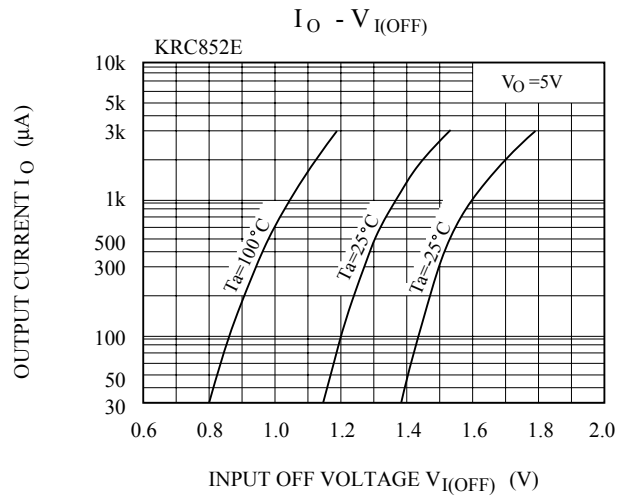
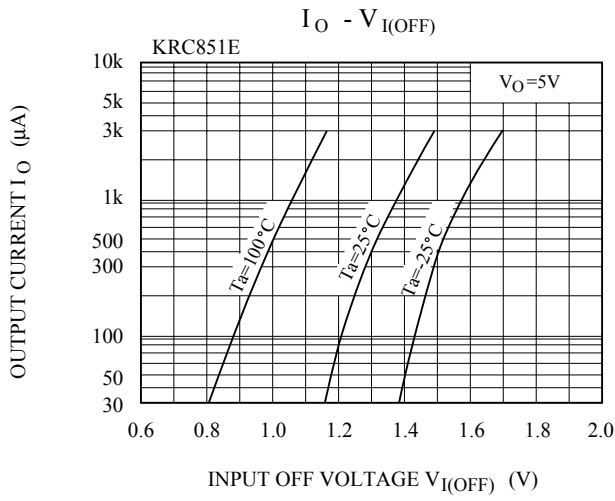
ELECTRICAL CHARACTERISTICS (Ta=25°C)

CHARACTERISTIC		SYMBOL	TEST CONDITION	MIN.	TYP.	MAX.	UNIT	
Switching Time	Rise Time	KRC851E	V _O =5V V _{IN} =5V R _L =1kΩ	-	0.03	-	μS	
		KRC852E		-	0.05	-		
		KRC853E		-	0.12	-		
		KRC854E		-	0.22	-		
		KRC855E		-	0.01	-		
		KRC856E		-	0.03	-		
	Storage Time	KRC851E		t _{stg}	-	2.0		-
		KRC852E		-	-	2.0		-
		KRC853E		-	-	2.0		-
		KRC854E		-	-	2.0		-
		KRC855E		-	-	2.0		-
		KRC856E		-	-	2.0		-
	Fall Time	KRC851E		t _f	-	0.12		-
		KRC852E		-	-	0.36		-
		KRC853E		-	-	0.35		-
		KRC854E		-	-	0.6		-
		KRC855E		-	-	0.1		-
		KRC856E		-	-	0.19		-

KRC851E~KRC856E



KRC851E~KRC856E



KRC851E~KRC856E

