

---

# PF01410A

## MOS FET Power Amplifier Module for GSM Handy Phone

# HITACHI

ADE-208-424B (Z)  
Product Preview  
3rd Edition  
November 1997

---

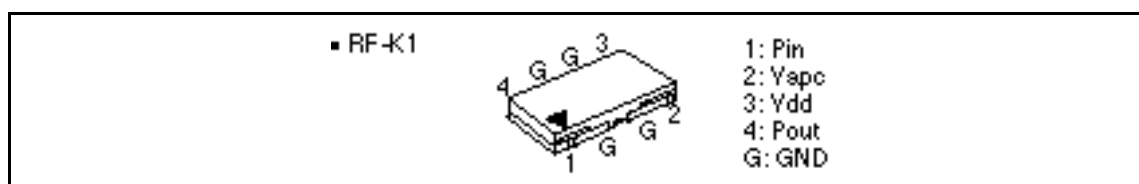
### Application

- For GSM class4 890 to 915 MHz

### Features

- 4.8 V operation 2 stage amplifier
- Small package
- High efficiency : 45% Typ
- High speed switching : 1  $\mu$ sec

### Pin Arrangement



### Absolute Maximum Ratings (T<sub>c</sub> = 25°C)

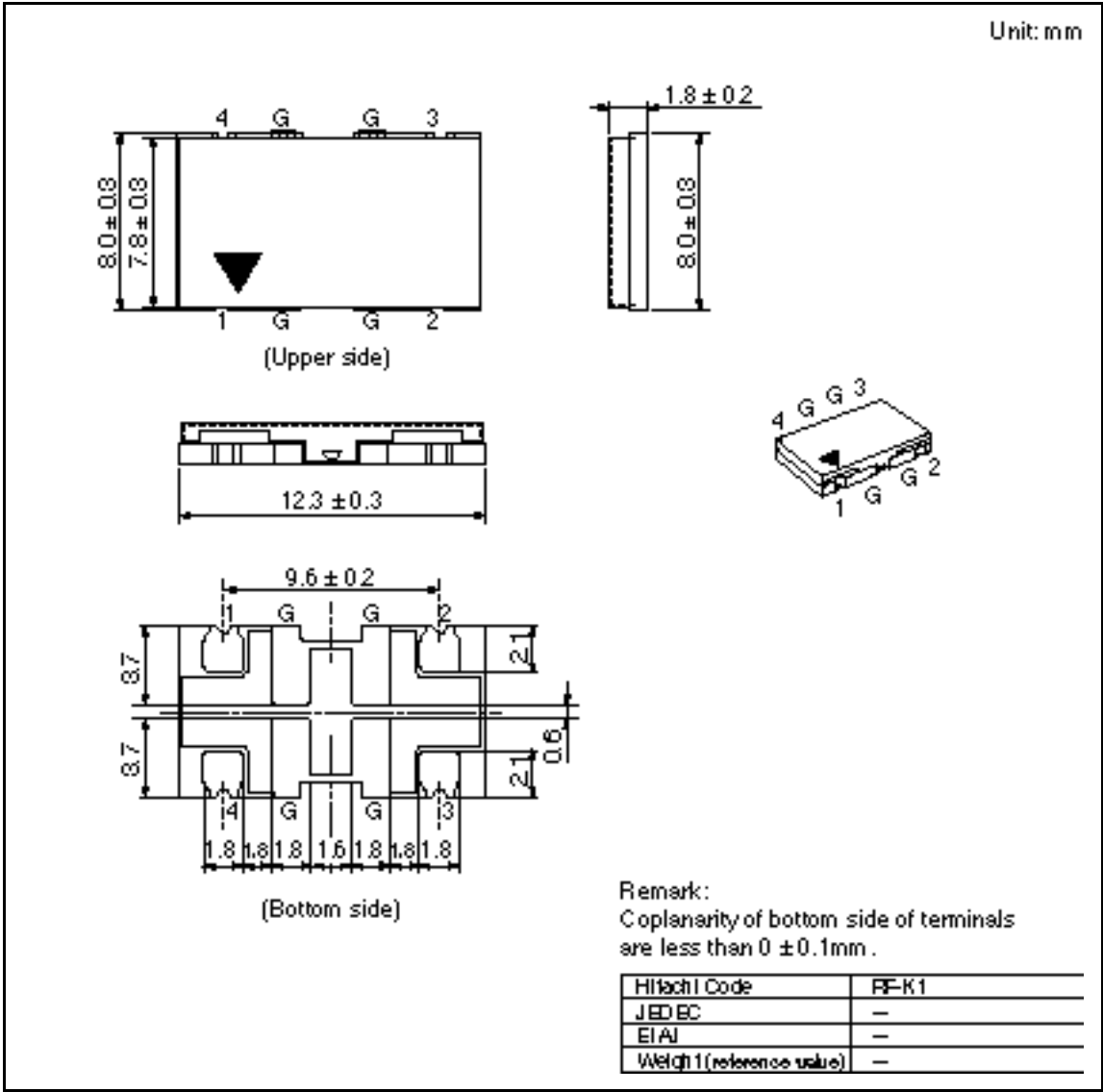
Item	Symbol	Rating	Unit
Supply voltage	V <sub>DD</sub>	10	V
Supply current	I <sub>DD</sub>	3	A
V <sub>APC</sub> voltage	V <sub>APC</sub>	4	V
Input power	P <sub>in</sub>	50	mW
Operating case temperature	T <sub>c</sub> (op)	-30 to +100	°C
Storage temperature	T <sub>stg</sub>	-30 to +100	°C
Output power	P <sub>out</sub>	4	W

## PF01410A

### Electrical Characteristics (Tc = 25°C)

Item	Symbol	Min	Typ	Max	Unit	Test Condition
Frequency range	f	890	—	915	MHz	—
Control voltage range	V <sub>APC</sub>	0.1	—	2.5	V	—
Drain cutoff current	I <sub>DS</sub>	—	—	100	μA	V <sub>DD</sub> = 10 V, V <sub>APC</sub> = 0 V
Total efficiency	η <sub>T</sub>	38	45	—	%	Pin = +8 dBm, V <sub>DD</sub> = 4.8 V,
2nd harmonic distortion	2nd H.D.	—	−45	−35	dBc	Pout = 2.8 W (At APC controlled)
3rd harmonic distortion	3rd H.D.	—	−45	−35	dBc	R <sub>L</sub> = Rg = 50 Ω, Tc = 25°C
Input VSWR	VSWR (in)	—	1.5	3.0	—	—
Output power (1)	Pout (1)	2.8	3.3	—	W	Pin = +8 dBm, V <sub>DD</sub> = 4.8 V, V <sub>APC</sub> = 2.5 V, R <sub>L</sub> = Rg = 50 Ω, Tc = 25°C
Output power (2)	Pout (2)	1.5	1.8	—	W	Pin = +8 dBm, V <sub>DD</sub> = 4 V, V <sub>APC</sub> = 2.5 V, R <sub>L</sub> = Rg = 50 Ω, Tc = 85°C
Isolation	—	—	−35	−20	dBm	Pin = +12.5 dBm, V <sub>DD</sub> = 4.8 V, V <sub>APC</sub> = 0.1 V, R <sub>L</sub> = Rg = 50 Ω, Tc = 25°C
Switching time	t <sub>r</sub> , t <sub>f</sub>	—	1	2	μs	Pin = +8 dBm, V <sub>DD</sub> = 4.8 V, R <sub>L</sub> = Rg = 50 Ω, Tc = 25°C Time from Pout = −10 to +34.5 dBm
Stability	—	No parasitic oscillation			—	Pin = +8 dBm, V <sub>DD</sub> = 7 V, Pout = 2.8 W (At APC controlled), Rg = 50 Ω, Tc = 25°C, Output VSWR = 8 : 1 All phases

Package Dimensions



When using this document, keep the following in mind:

1. This document may, wholly or partially, be subject to change without notice.
2. All rights are reserved: No one is permitted to reproduce or duplicate, in any form, the whole or part of this document without Hitachi's permission.
3. Hitachi will not be held responsible for any damage to the user that may result from accidents or any other reasons during operation of the user's unit according to this document.
4. Circuitry and other examples described herein are meant merely to indicate the characteristics and performance of Hitachi's semiconductor products. Hitachi assumes no responsibility for any intellectual property claims or other problems that may result from applications based on the examples described herein.
5. No license is granted by implication or otherwise under any patents or other rights of any third party or Hitachi, Ltd.
6. **MEDICAL APPLICATIONS:** Hitachi's products are not authorized for use in MEDICAL APPLICATIONS without the written consent of the appropriate officer of Hitachi's sales company. Such use includes, but is not limited to, use in life support systems. Buyers of Hitachi's products are requested to notify the relevant Hitachi sales offices when planning to use the products in MEDICAL APPLICATIONS.

---

---

# HITACHI

## **Hitachi, Ltd.**

Semiconductor & IC Div.  
Nippon Bldg., 2-6-2, Ohit-machi, Chiyoda-ku, Tokyo 100, Japan  
Tel: Tokyo (03) 8270-2111  
Fax: (03) 8270-5109

### **For further information contact:**

**Hitachi America, Ltd.**  
Semiconductor & IC Div.  
2000 Sierra Point Parkway  
Brisbane, CA 94005-1885  
U.S.A.  
Tel: 415-589-8800  
Fax: 415-588-4207

**Hitachi Europe GmbH**  
Electronic Components Group  
Continental Europe  
Domacher StraÙe 8  
D-85622 Feldkirchen  
München  
Tel: 089-9 31 80-0  
Fax: 089-9 29 80 00

**Hitachi Europe Ltd.**  
Electronic Components Div.  
Northern Europe Headquarters  
Whitebrook Park  
Lower Cookham Road  
Maidenhead  
Berkshire SL6 8YQ,  
United Kingdom  
Tel: 0628-585000  
Fax: 0628-778822

**Hitachi Asia Pte. Ltd.**  
16 Collyer Quay #20-00  
Hitachi Tower  
Singapore 0104  
Tel: 585-2100  
Fax: 585-1588

**Hitachi Asia (Hong Kong) Ltd.**  
Unit 706, North Tower,  
World Finance Centre,  
Harbour City Canton Road  
Tsim Sha Tsui, Kowloon  
Hong Kong  
Tel: 27859218  
Fax: 27806071

Copyright © Hitachi, Ltd., 1997. All rights reserved. Printed in Japan.