



# SAW Components

Data Sheet B4170





**SAW Components**

**B4170**

**Low-Loss Filter for Mobile Communication**

**1960,0 MHz**

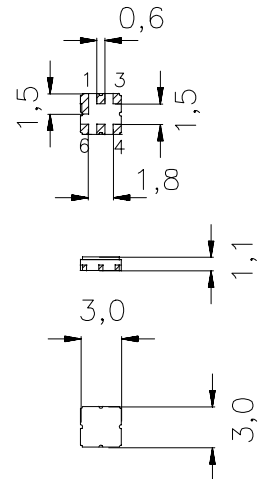
**Preliminary Data**



Ceramic package **DCC6D**

**Features**

- Low-loss RF filter for mobile telephone PCS systems, receive path
- Low amplitude ripple
- Usable passband 60 MHz
- Unbalanced to balanced operation
- Impedance transformation from 50 Ω to 200 Ω
- Package for **Surface Mounted Technology (SMT)**
- Ceramic SMD package



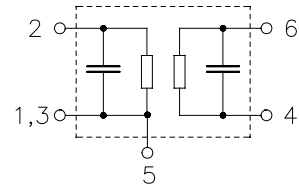
**Terminals**

- Gold-plated Ni

Dimensions in mm, approx. weight 0,037 g

**Pin configuration**

- 2 Input, unbalanced
- 4, 6 Output, balanced
- 1, 3 Input ground
- 1, 3, 5 To be grounded



Type	Ordering code	Marking and Package according to	Packing according to
B4170	B39202-B4170-U510	C61157-A7-A68	F61074-V8089-Z000

Electrostatic Sensitive Device (ESD)

**Maximum ratings**

Operating temperature range	$T$	-30 / +85	°C	source/load impedance 50Ω/200Ω
Storage temperature range	$T_{stg}$	-40 / +85	°C	
DC voltage	$V_{DC}$	5	V	
Input power max.	$P_{IN}$			
1850,0 ... 1910,0 MHz		13	dBm	peak power of GSM signal duty cycle 1:8
elsewhere		0	dBm	



<b>SAW Components</b>	<b>B4170</b>
<b>Low-Loss Filter for Mobile Communication</b>	<b>1960,0 MHz</b>

**Preliminary Data**



**Characteristics**

Operating temperature range:  $T = +25 \pm 2 \text{ }^\circ\text{C}$   
 Terminating source impedance:  $Z_S = 50 \text{ } \Omega$   
 Terminating load impedance:  $Z_L = 200 \text{ } \Omega$  (balanced) || 15 nH

		<b>min.</b>	<b>typ.</b>	<b>max.</b>	
<b>Center frequency</b>	$f_C$	—	1960,0	—	MHz
<b>Maximum insertion attenuation</b>	$\alpha_{\max}$	—	3,0	3,5	dB
	1930,0 ... 1990,0 MHz				
<b>Amplitude ripple (p-p)</b>	$\Delta\alpha$	—	1,0	1,6	dB
	1930,0 ... 1990,0 MHz				
<b>Input VSWR</b>		—	1,9	2,1	
	1930,0 ... 1990,0 MHz				
<b>Output VSWR</b>		—	1,7	2,1	
	1930,0 ... 1990,0 MHz				
<b>Attenuation</b>	$\alpha$				
	0,0 ... 1000,0 MHz	45	72	—	dB
	1000,0 ... 1830,0 MHz	40	60	—	dB
	1830,0 ... 1900,0 MHz	15	19	—	dB
	1900,0 ... 1910,0 MHz	12	17	—	dB
	2010,0 ... 2020,0 MHz	8	12	—	dB
	2020,0 ... 2070,0 MHz	12	18	—	dB
	2070,0 ... 2200,0 MHz	25	40	—	dB
	2200,0 ... 2380,0 MHz	45	55	—	dB
	2380,0 ... 4600,0 MHz	30	40	—	dB
	4600,0 ... 6000,0 MHz	23	30	—	dB



<b>SAW Components</b>	<b>B4170</b>
<b>Low-Loss Filter for Mobile Communication</b>	<b>1960,0 MHz</b>

**Preliminary Data**

**Characteristics**

Operating temperature range:  $T = +15$  to  $+60$  °C  
 Terminating source impedance:  $Z_S = 50 \Omega$   
 Terminating load impedance:  $Z_L = 200 \Omega$  (balanced) || 15 nH

		min.	typ.	max.	
<b>Center frequency</b>	$f_C$	—	1960,0	—	MHz
<b>Maximum insertion attenuation</b>	$\alpha_{max}$	—	3,0	3,8	dB
	1930,0 ... 1990,0 MHz				
<b>Amplitude ripple (p-p)</b>	$\Delta\alpha$	—	1,0	1,9	dB
	1930,0 ... 1990,0 MHz				
<b>Input VSWR</b>		—	1,9	2,1	
	1930,0 ... 1990,0 MHz				
<b>Output VSWR</b>		—	1,7	2,1	
	1930,0 ... 1990,0 MHz				
<b>Attenuation</b>	$\alpha$				
	0,0 ... 1000,0 MHz	45	72	—	dB
	1000,0 ... 1830,0 MHz	40	60	—	dB
	1830,0 ... 1900,0 MHz	15	19	—	dB
	1900,0 ... 1910,0 MHz	8	16	—	dB
	2010,0 ... 2020,0 MHz	7	10	—	dB
	2020,0 ... 2070,0 MHz	12	17	—	dB
	2070,0 ... 2200,0 MHz	25	40	—	dB
	2200,0 ... 2380,0 MHz	45	55	—	dB
	2380,0 ... 4600,0 MHz	30	40	—	dB
	4600,0 ... 6000,0 MHz	23	30	—	dB



<b>SAW Components</b>	<b>B4170</b>
<b>Low-Loss Filter for Mobile Communication</b>	<b>1960,0 MHz</b>

**Preliminary Data**



**Characteristics**

Operating temperature range:  $T = -10$  to  $+80$  °C  
 Terminating source impedance:  $Z_S = 50 \Omega$   
 Terminating load impedance:  $Z_L = 200 \Omega$  (balanced) || 15 nH

		<b>min.</b>	<b>typ.</b>	<b>max.</b>	
<b>Center frequency</b>	$f_C$	—	1960,0	—	MHz
<b>Maximum insertion attenuation</b>	$\alpha_{max}$	—	3,2	4,0	dB
	1930,0 ... 1990,0 MHz				
<b>Amplitude ripple (p-p)</b>	$\Delta\alpha$	—	1,2	2,1	dB
	1930,0 ... 1990,0 MHz				
<b>Input VSWR</b>		—	1,9	2,2	
	1930,0 ... 1990,0 MHz				
<b>Output VSWR</b>		—	1,7	2,2	
	1930,0 ... 1990,0 MHz				
<b>Attenuation</b>	$\alpha$				
	0,0 ... 1000,0 MHz	45	72	—	dB
	1000,0 ... 1830,0 MHz	40	60	—	dB
	1830,0 ... 1900,0 MHz	15	17	—	dB
	1900,0 ... 1910,0 MHz	7	15	—	dB
	2010,0 ... 2020,0 MHz	6	9	—	dB
	2020,0 ... 2070,0 MHz	12	17	—	dB
	2070,0 ... 2200,0 MHz	25	40	—	dB
	2200,0 ... 2380,0 MHz	45	55	—	dB
	2380,0 ... 4600,0 MHz	30	40	—	dB
	4600,0 ... 6000,0 MHz	23	30	—	dB



**SAW Components**

**B4170**

**Low-Loss Filter for Mobile Communication**

**1960,0 MHz**

**Preliminary Data**



**Characteristics**

Operating temperature range:  $T = -30$  to  $+85$  °C  
 Terminating source impedance:  $Z_S = 50 \Omega$   
 Terminating load impedance:  $Z_L = 200 \Omega$  (balanced) || 15 nH

		<b>min.</b>	<b>typ.</b>	<b>max.</b>	
<b>Center frequency</b>	$f_C$	—	1960,0	—	MHz
<b>Maximum insertion attenuation</b>	$\alpha_{max}$	—	3,3	4,5	dB
1930,0 ... 1990,0 MHz					
<b>Amplitude ripple (p-p)</b>	$\Delta\alpha$	—	1,3	2,4	dB
1930,0 ... 1990,0 MHz					
<b>Input VSWR</b>		—	1,9	2,2	
1930,0 ... 1990,0 MHz					
<b>Output VSWR</b>		—	1,7	2,2	
1930,0 ... 1990,0 MHz					
<b>Attenuation</b>	$\alpha$				dB
0,0 ... 1000,0 MHz		45	72	—	
1000,0 ... 1830,0 MHz		40	60	—	
1830,0 ... 1900,0 MHz		15	17	—	
1900,0 ... 1910,0 MHz		7	15	—	
2010,0 ... 2020,0 MHz		6	9	—	
2020,0 ... 2070,0 MHz		12	17	—	
2070,0 ... 2200,0 MHz		25	40	—	
2200,0 ... 2380,0 MHz		45	55	—	
2380,0 ... 4600,0 MHz		30	40	—	
4600,0 ... 6000,0 MHz		23	30	—	



SAW Components

B4170

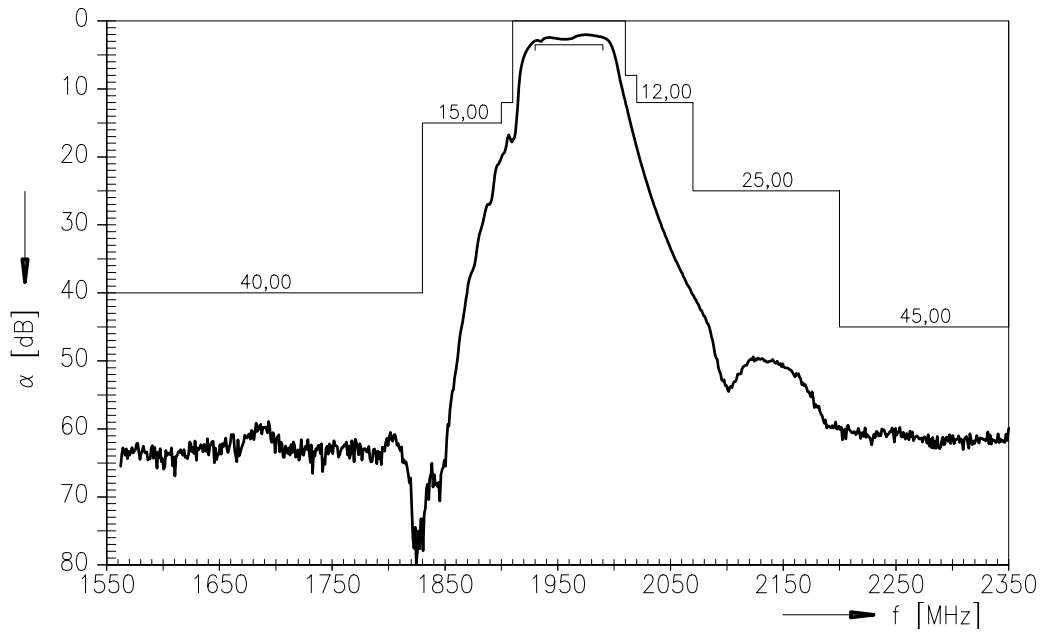
Low-Loss Filter for Mobile Communication

1960,0 MHz

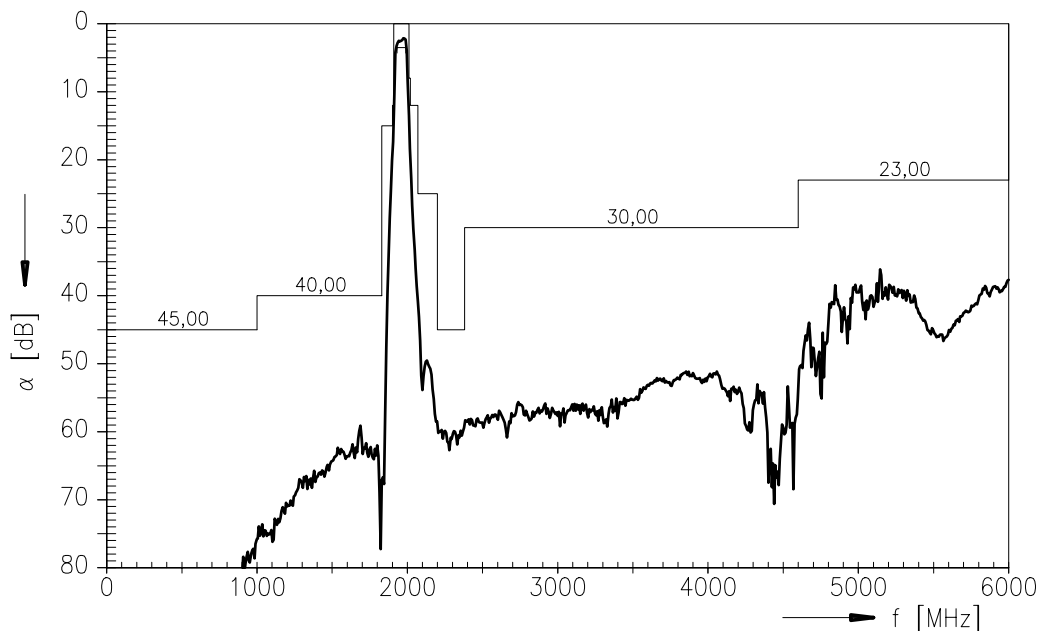
Preliminary Data



Transfer function (spec at 25 °C)



Transfer function (wide band):





**SAW Components**

**B4170**

**Low-Loss Filter for Mobile Communication**

**1960,0 MHz**

Preliminary Data



**Published by EPCOS AG**

**Surface Acoustic Wave Components Division, OFW E MF**

**P.O. Box 80 17 09, D-81617 München**

© EPCOS AG 1999. All Rights Reserved.

As far as patents or other rights of third parties are concerned, liability is only assumed for components per se, not for applications, processes and circuits implemented within components or assemblies.

The information describes the type of component and shall not be considered as assured characteristics.

Terms of delivery and rights to change design reserved.

For questions on technology, prices and delivery please contact the sales offices of EPCOS AG or the international representatives.

Due to technical requirements components may contain dangerous substances. For information on the type in question please also contact one of our sales offices.