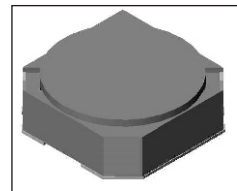


# SMT Power Inductor

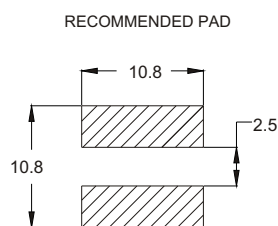
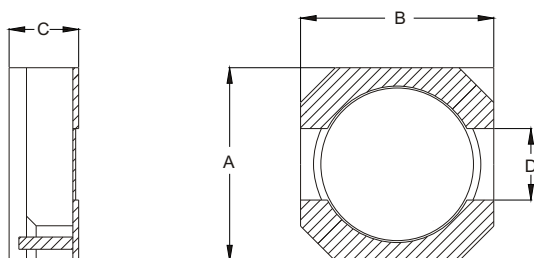
## SIL104 Type

### Features

- Low profile (4.0mm max. height) SMD type.
- Magnetically shielded, suitable for high density mounting.
- High energy storage and low DCR.
- Provided with embossed carrier tape packing.
- Ideal for power source circuits, DC-DC converter, DC-AC inverters inductor application.
- In addition to the standard versions shown here, custom inductors are available to meet your exact requirements.



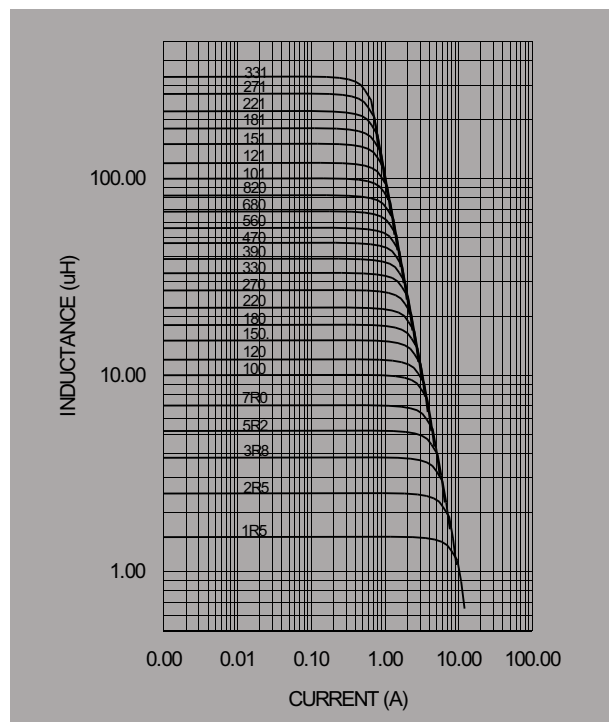
### Mechanical Dimension:



UNIT:mm/inch  
 A = 10.0±0.3/0.394±0.112  
 B = 10.0±0.3/0.394±0.112  
 C = 4.0/0.157 Max.  
 D = 3.0±0.1/0.118±0.004

### Electrical Characteristics: At 25°C: 100KHz, 0.1V

| PART NO.     | L <sup>1</sup><br>(μH) | DCR<br>(Ω) MAX | I <sub>RATED</sub> <sup>2</sup><br>(A <sub>dc</sub> ) |
|--------------|------------------------|----------------|-------------------------------------------------------|
| SIL104 - 1R5 | 1.5                    | 0.0081         | 10.0                                                  |
| SIL104 - 2R5 | 2.5                    | 0.0100         | 7.5                                                   |
| SIL104 - 3R8 | 3.8                    | 0.0130         | 6.0                                                   |
| SIL104 - 5R2 | 5.2                    | 0.0220         | 5.5                                                   |
| SIL104 - 7R0 | 7.0                    | 0.0270         | 4.8                                                   |
| SIL104 - 100 | 10                     | 0.0350         | 4.4                                                   |
| SIL104 - 150 | 15                     | 0.0500         | 3.6                                                   |
| SIL104 - 220 | 22                     | 0.0730         | 2.9                                                   |
| SIL104 - 330 | 33                     | 0.0930         | 2.3                                                   |
| SIL104 - 470 | 47                     | 0.1280         | 2.1                                                   |
| SIL104 - 680 | 68                     | 0.2130         | 1.5                                                   |
| SIL104 - 101 | 100                    | 0.3040         | 1.35                                                  |
| SIL104 - 151 | 150                    | 0.5060         | 1.15                                                  |
| SIL104 - 221 | 220                    | 0.7560         | 0.92                                                  |
| SIL104 - 331 | 330                    | 1.0900         | 0.70                                                  |



1. Tolerance of inductance  
1.5~330uH±30%
2. I<sub>RATED</sub> : rated current. ΔL<35%, ΔT<45°C at I<sub>RATED</sub>
3. Operating temperature: -20°C to 105°C (including self-temperature rise)



**DELTA ELECTRONICS, INC.**

(TAOYUAN PLANT CPBG) 252, SAN YING ROAD, KUEISAN INDUSTRIAL ZONE, TAOYUAN SHIEN, 333, TAIWAN, R.O.C.

TEL: 886-3-3591968; FAX: 886-3-3591991

<http://www.deltawww.com>