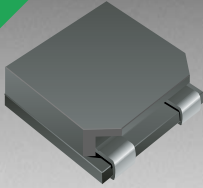


*RoHS COMPLIANT



BOURNS®

Features

- Low height of only 5.0 mm
- Inductance as low as 0.9 μH
- High current up to 20 amps
- RoHS compliant*

Applications

- Input/output of DC/DC converters
- Power supplies for:
 - Portable communication equipment
 - Camcorders
 - LCD TVs
 - Car radios

SRR1305 Series - SMD Shielded Power Inductors

Electrical Specifications

Bourns Part No.	Inductance 100 kHz			SRF Min. (MHz)	RDC (m Ω)	I rms (L1) Max. (A)	I sat Typ. (A)
	L0 (μH)	L1 (μH)	Tol. %				
SRR1305-R90ZL	0.9	0.75	± 25	95	2.5	20.0	22.0
SRR1305-1R4ZL	1.4	1.25	± 25	70	3.4	16.0	18.0
SRR1305-2R0ZL	2.0	1.80	± 25	60	4.6	13.0	15.0
SRR1305-2R7ZL	2.7	2.50	± 25	50	9.5	6.0	10.0

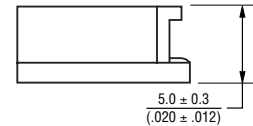
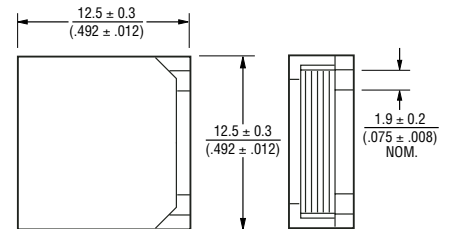
General Specifications

Test Voltage.....0.1 V
 Reflow Soldering ...230 °C, 50 sec. max.
 Operating Temperature -40 °C to +125 °C
 (Temperature rise included)
 Storage Temperature...-40 °C to +125 °C
 Resistance to Soldering Heat
260 °C for 5 sec.

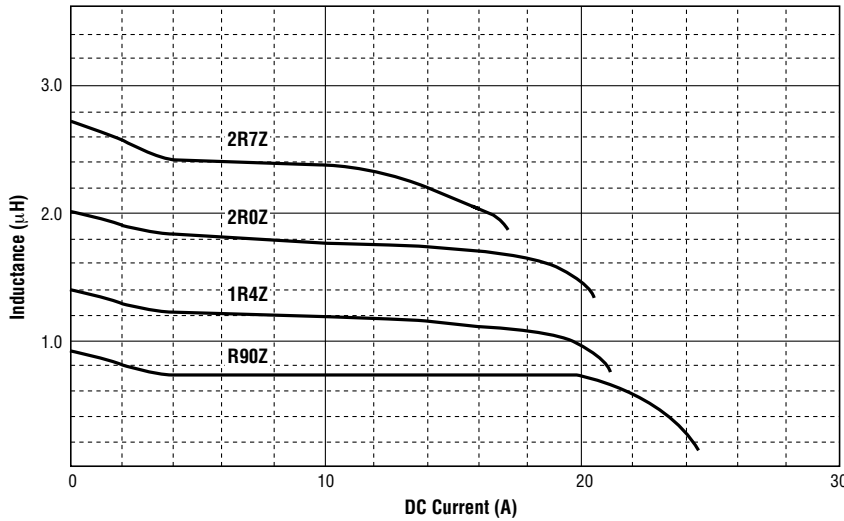
Materials

CoreFerrite ER and SB
 WireUltra-fine rectangular enameled copper
 TerminalCu/Sn
 AdhesiveEpoxy resin
 Rated Current
Ind. drop 20 % max. at (L1) Isat
 Temperature Rise
45 °C max. at rated I rms
 Packaging.....600 pcs. per reel

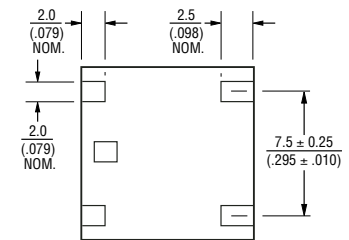
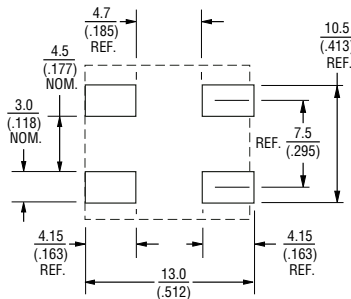
Product Dimensions



Inductance vs. DC Superposition Characteristics

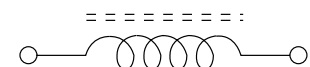


Recommended Layout



DIMENSIONS: $\frac{\text{MM}}{\text{(INCHES)}}$

Electrical Schematic

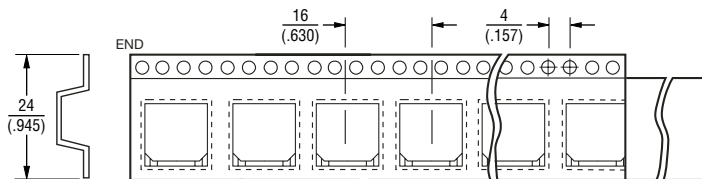
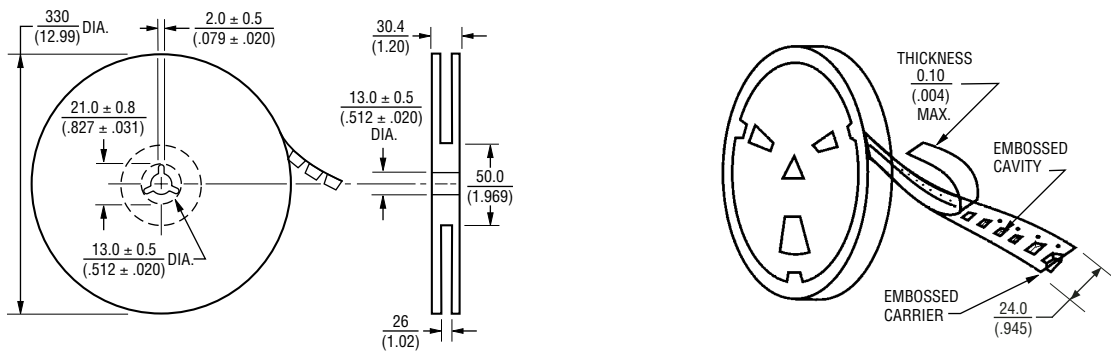


*RoHS Directive 2002/95/EC Jan 27 2003 including Annex
 Specifications are subject to change without notice.
 Customers should verify actual device performance in their specific applications.

SRR1305 Series - SMD Shielded Power Inductors

BOURNS®

Packaging Specifications



QTY: 600 PCS. PER REEL

DIMENSIONS: $\frac{\text{MM}}{\text{(INCHES)}}$

REV. 05/05

Specifications are subject to change without notice.
Customers should verify actual device performance in their specific applications.