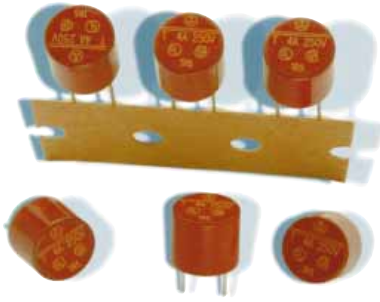
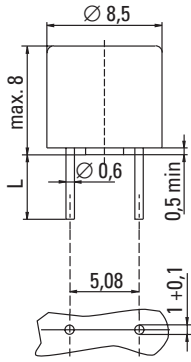


TR5® / No. 374/379 UL 248-14, 250V, T



Dimensions (mm)



Holes in PCB
Long Leads (L=18.8mm)
Short Leads (L=4.3mm)

Limits for Pre-arcing Time

Rated Current	$2.0 \times I_{Rated}$
50mA ... 6.30A ¹	< 60s



Time-Current Characteristic

Time Lag (T)

Standard

UL 248-14
CSA C22.2 No. 248.14

Approvals

UL Listed: File No. E 67006
CSA Certified: File No. 51378

Features

- Reduced PCB space requirements
- Direct solderable or plug-in versions
- Internationally approved
- Low internal resistance
- Shocksafe casing
- Vibration resistant

Weblinks

Data Sheet

www.wickmann.com/products/374.pdf

Approval Certificates

www.wickmann.com/approvals

Time-Current Curve

Page 58
www.wickmann.com/itcurves

Packaging

Page 118
www.wickmann.com/pack

FaxBack Document # 301

Specifications

Packaging

00: Tape/Ampopack (1000 pcs.)
41: Short Leads - Bulk (1000 pcs.)

Materials

Base/Cap: Brown Thermoplastic
Polyamide PA 6.6, UL 94V0
Round Pins: Copper alloy, tin plated

Operating Temperature

-40°C to +85°C (consider de-rating)
-25°C to +70°C (8A, 10A; consider de-rating)

Climatic Category

-25°C/+70°C/21 days (EN 60068-1..3)

Stock Conditions:

+10°C to +60°C
relative humidity ≤ 75% yearly average,
without dew, maximum value for 30 days-95%

Vibration Resistance

24 cycles at 15 min. each (EN 60068-6)
10 - 60Hz at 0.75mm amplitude
60 - 2000Hz at 10g acceleration

Lead Pull Strength

10N (EN 60068-2-21)

Solderability

260°C, ≤ 3 sec. (Wave)
350°C, ≤ 1 sec. (Hand)

Soldering Heat Resistance

260°C, 10 sec. (IEC 60068-2-20)

Marking

 TR5, 250V, T, Current Rating, Approvals

Unit Weight

0.77g (approx.)

Permissible continuous operating current is ≤ 70% at ambient temperature of 23°C (73.4°F).

Rated Current	Amp Code	Voltage Rating	Breaking Capacity	Voltage Drop $1.0 \times I_{Rated}$ max. (mV)	Power Dissipation $1.0 \times I_{Rated}$ max. (mW)	Melting Integral $10 \times I_{Rated}$ min. (A ² s)	Approvals ≡ CSA
No. 374							
50mA	0050	250V		900	45	0.0056	• •
63mA	0063	250V		800	50	0.009	• • •
80mA	0080	250V		700	55	0.014	• • •
100mA	0100	250V		600	60	0.025	• • •
125mA	0125	250V		550	70	0.044	• • •
160mA	0160	250V		480	80	0.058	• • •
200mA	0200	250V		390	80	0.1	• • •
250mA	0250	250V		350	90	0.17	• • •
315mA	0315	250V		300	95	0.26	• • •
400mA	0400	250V	50A / 250VAC	250	100	0.32	• • •
500mA	0500	250V	50-60Hz	220	110	0.6	• • •
630mA	0630	250V	cos φ = 1.0	210	135	0.75	• • •
800mA	0800	250V		160	130	0.98	• • •
1.00A	1100	250V		155	155	2.1	• • •
1.25A	1125	250V		145	185	3.2	• • •
1.60A	1160	250V		130	210	4.5	• • •
2.00A	1200	250V		125	250	7.5	• • •
2.50A	1250	250V		120	300	14	• • •
3.15A	1315	250V		110	350	22	• • •
4.00A	1400	250V		100	400	36	• • •
5.00A	1500	250V		95	475	59	• • •
6.30A	1630	250V		90	570	110	• • •
No. 379 for short circuit back-up protection							
8.00A ²	1800	250V	50A / 250VAC	80	800	110	
10.00A ²	2100	250V	50-60Hz/cos φ = 1.0	90	1000	190	

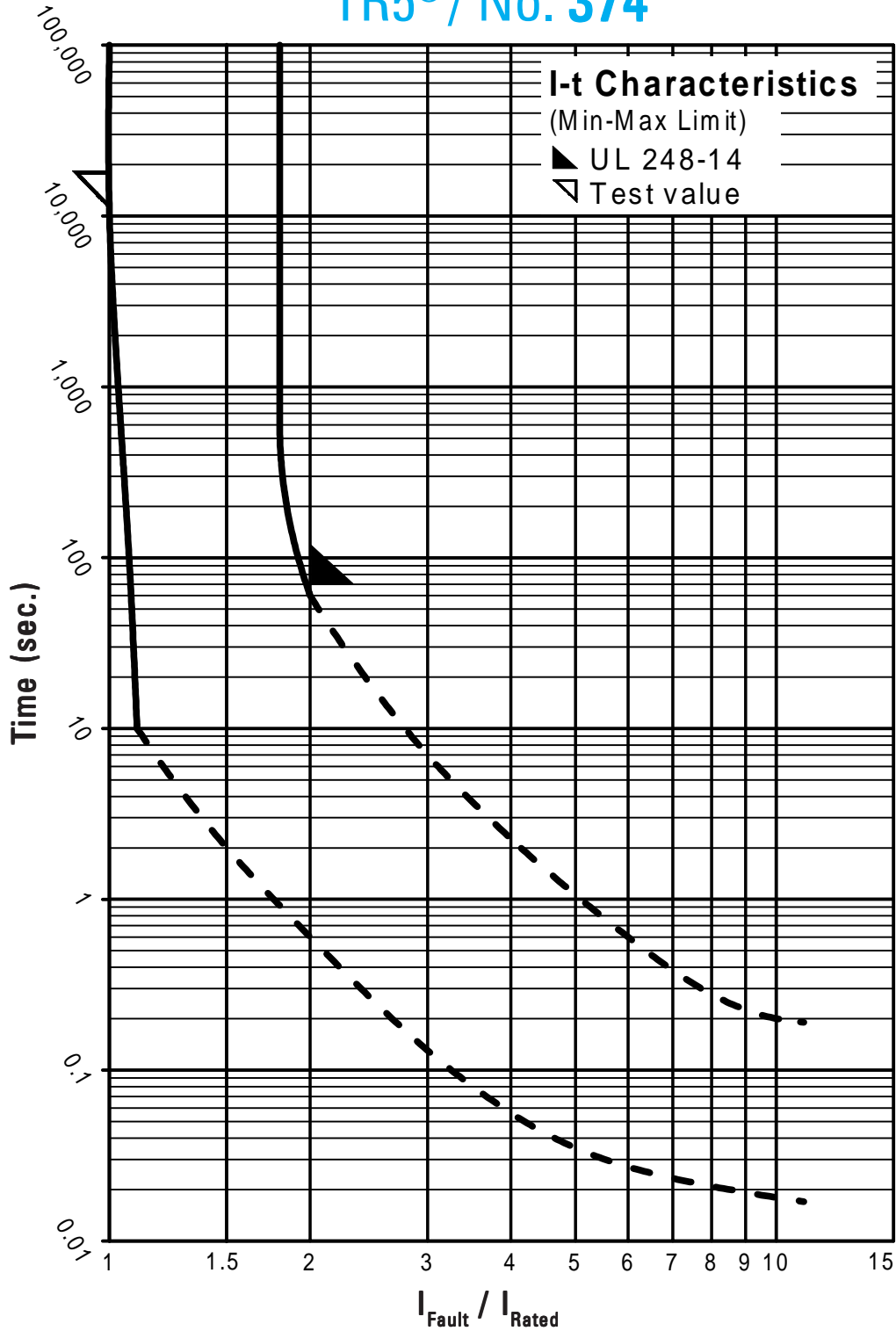
¹ Ratings 8.00A and 10.00A: $0.7 \times I_{Rated} > 4h$; $2.0 \times I_{Rated} < 60s$

² Conducting path cross-section minimum $\geq 0.2mm^2$

Order Information

Qty.	Order-Number	Series	Amp Code	Packaging

TR5® / No. 374



Contact WICKMANN for individual I-t curves