

# KPI-511

## DESCRIPTION

The photointerrupter high-performance standard type KPI-511 combines a high-output GaAs IRED with a high sensitivity phototransistor.

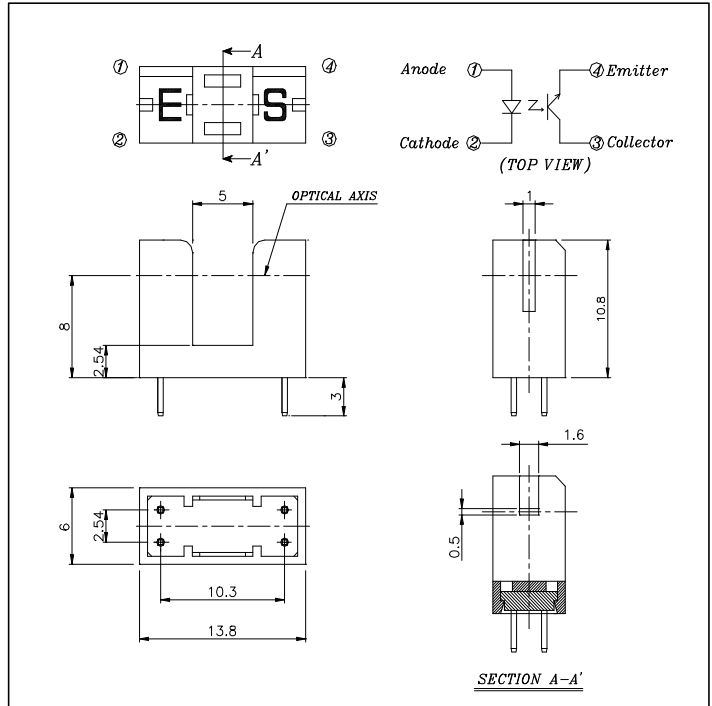
## FEATURES

- PWB direct mount type
- GAP : 5.0mm

## APPLICATIONS

- Printers
- Copiers
- A T M
- Ticket Vending Machines

## DIMENSIONS



## ABSOLUTE MAXIMUM RATINGS

(Ta=25 )

Parameter		Symbol	Rating	Unit
Input	Forward Current	$I_F$	60	mA
	Pulse Forward Current <sup>*1</sup>	$I_{FP}$	1	A
	Reverse Voltage	$V_R$	5	V
	Power Dissipation	$P_D$	100	mW
Output	Collector Emitter Voltage	$V_{CEO}$	30	V
	Emitter Collector Voltage	$V_{ECO}$	5	V
	Collector Current	$I_C$	40	mA
	Collector Power Dissipation	$P_C$	100	mW
Operating Temperature <sup>*2</sup>		$T_{OPR}$	-25 ~ +85	
Storage Temperature <sup>*2</sup>		$T_{STG}$	-40 ~ +85	
Soldering Temperature <sup>*3</sup>		$T_{SOL}$	260	

\*1. Pulse width :  $t_w$  100μsec, period : T=10msec

\*2. No icebound or dew

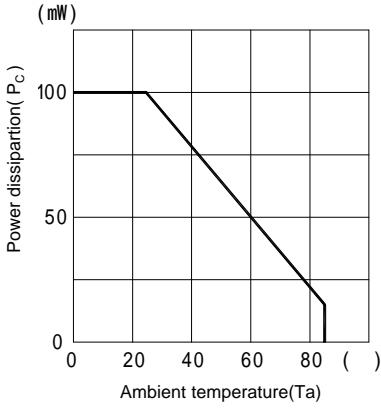
\*3. For MAX. 5 seconds at the position of 1mm from the package

## ELECTRO-OPTICAL CHARACTERISTICS

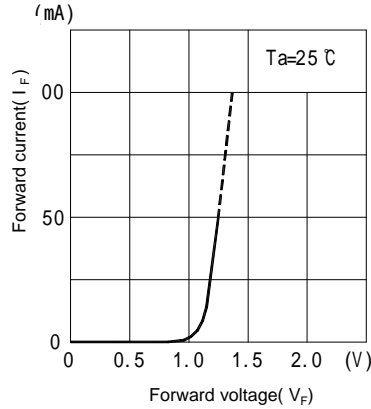
(Ta=25 )

Parameter		Symbol	Conditions	MIN.	TYP.	MAX.	Unit	
Input	Forward Voltage	$V_F$	$I_F=20mA$	-	1.2	1.7	V	
	Reverse Current	$I_R$	$V_R=5V$	-	-	10	μA	
	Capacitance	$C_T$	f=1KHz	-	25	-	pF	
	Peak Wavelength	$\lambda_P$	-	-	940	-	nm	
Output	Dark Current	$I_{CEO}$	$V_{CE}=10V, 0 Lux$	-	-	10	μA	
Coupled	Light Current	$I_L$	$V_{CE}=5V, I_F=20mA$ (Non-shading)	0.5	-	15	mA	
	Collector Emitter Saturation Voltage	$V_{CE(SAT)}$	$I_F=20mA, I_C=0.1mA$	-	-	0.4	V	
	Response Time	Rise Time	$t_r$	$V_{CC}=5V, I_C=2mA, R_L=100$	-	5	-	μs
		Fall Time	$t_f$		-	5	-	μs

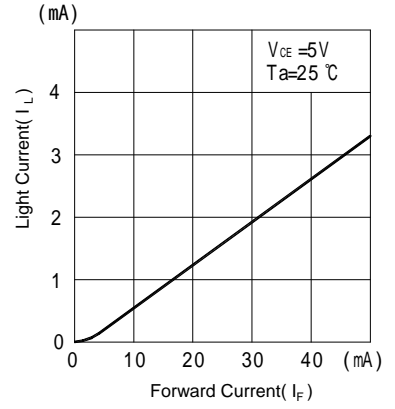
**Collector power dissipation Vs. Ambient temperature**



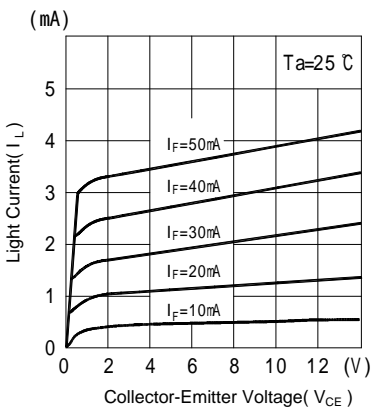
**Forward current Vs. Forward voltage**



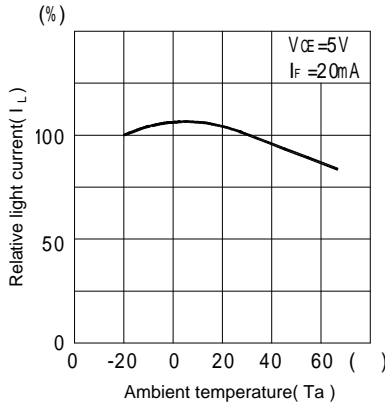
**Light current Vs. Forward current**



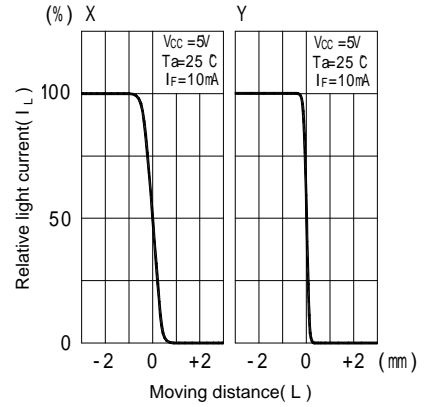
**Light current Vs. Collector-Emitter voltage**



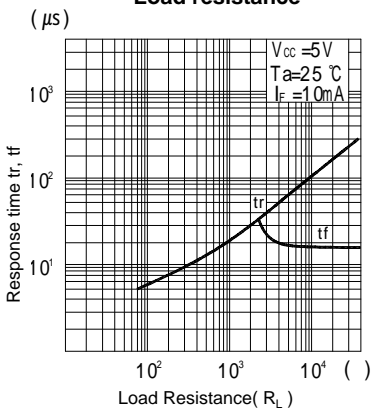
**Relative light current Vs. Ambient temperature**



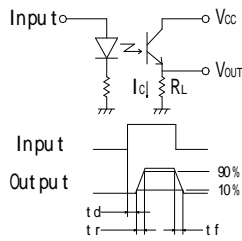
**Dark current Vs. Ambient temperature**



**Switching time Vs. Load resistance**



**Response time measurement circuit**



**Method of measuring position detection characteristic**

