



MBR6035PT THRU MBR60100PT

60.0 AMPS. Schottky Barrier Rectifiers



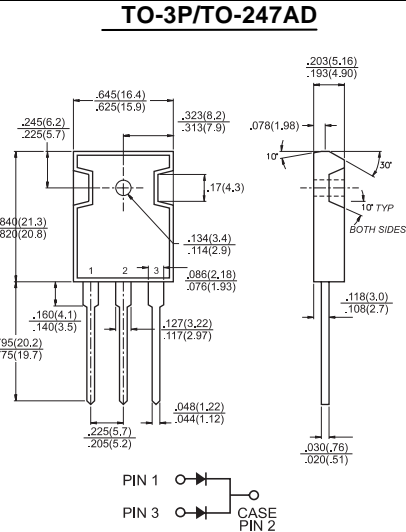
Voltage Range
35 to 100 Volts
Current
60.0 Amperes

Features

- ✦ Plastic material used carries Underwriters Laboratory Classifications 94V-0
- ✦ Metal silicon rectifier, majority carrier conduction
- ✦ Low power loss, high efficiency
- ✦ High current capability, low forward voltage drop
- ✦ High surge capability
- ✦ For use in low voltage, high frequency inverters, free wheeling, and polarity protection applications
- ✦ Guardring for overvoltage protection
- ✦ High temperature soldering guaranteed:
260°C/10 seconds, 0.17" (4.3mm) from case

Mechanical Data

- ✦ Cases: JEDEC TO-3P/TO-247AD molded plastic body
- ✦ Terminals: Leads solderable per MIL-STD-750, Method 2026
- ✦ Polarity: As marked
- ✦ Mounting position: Any
- ✦ Mounting torque: 10 in. - lbs. max
- ✦ Weight: 0.2 ounce, 5.6 grams



Maximum Ratings and Electrical Characteristics

Rating at 25°C ambient temperature unless otherwise specified.
Single phase, half wave, 60 Hz, resistive or inductive load.
For capacitive load, derate current by 20%

Type Number	Symbol	MBR 6035PT	MBR 6045PT	MBR 6050PT	MBR 6060PT	MBR 60100PT	Units
Maximum Recurrent Peak Reverse Voltage	V_{RRM}	35	45	50	60	100	V
Maximum RMS Voltage	V_{RMS}	24	31	35	42	70	V
Maximum DC Blocking Voltage	V_{DC}	35	45	50	60	100	V
Maximum Average Forward Rectified Current at $T_C=125^\circ\text{C}$	$I_{(AV)}$	60					A
Peak Repetitive Forward Current (Rated V_R , Square Wave, 20KHz) at $T_C=120^\circ\text{C}$	I_{FRM}	60.0					A
Peak Forward Surge Current, 8.3 ms Single Half Sine-wave Superimposed on Rated Load (JEDEC method)	I_{FSM}	500					A
Peak Repetitive Reverse Surge Current (Note 1)	I_{RRM}	1.0					A
Maximum Instantaneous Forward Voltage at (Note 2) $I_F=30\text{A}, T_C=25^\circ\text{C}$ $I_F=30\text{A}, T_C=125^\circ\text{C}$ $I_F=60\text{A}, T_C=25^\circ\text{C}$	V_F	0.62 0.55 0.75				0.72 0.62 0.85	V
Maximum Instantaneous Reverse Current @ $T_C=25^\circ\text{C}$ at Rated DC Blocking Voltage Per Leg @ $T_C=125^\circ\text{C}$ (Note 1)	I_R	1.0 50				1.0 100	mA mA
Voltage Rate of Change at (Rated V_R)	dV/dt	1,000					V/ μs
Typical Thermal Resistance Per Leg (Note 3)	$R_{\theta JC}$	1.2					$^\circ\text{C}/\text{W}$
Operating Junction Temperature Range	T_J	-65 to +150					$^\circ\text{C}$
Storage Temperature Range	T_{STG}	-65 to +175					$^\circ\text{C}$

- Notes: 1. 2.0us Pulse Width, $f=1.0$ KHz
2. Pulse Test: 300us Pulse Width, 1% Duty Cycle
3. Thermal Resistance from Junction to Case Per Leg

RATINGS AND CHARACTERISTIC CURVES (MBR6035PT THRU MBR60100PT)

FIG.1- FORWARD CURRENT DERATING CURVE

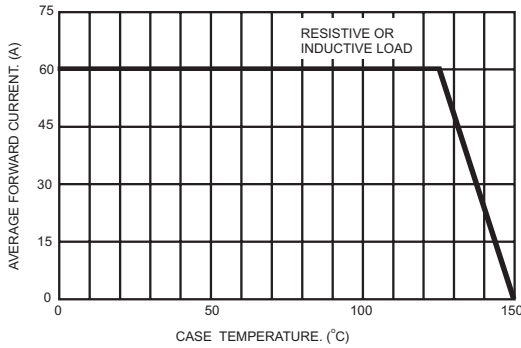


FIG.2- MAXIMUM NON-REPETITIVE FORWARD SURGE CURRENT PER LEG

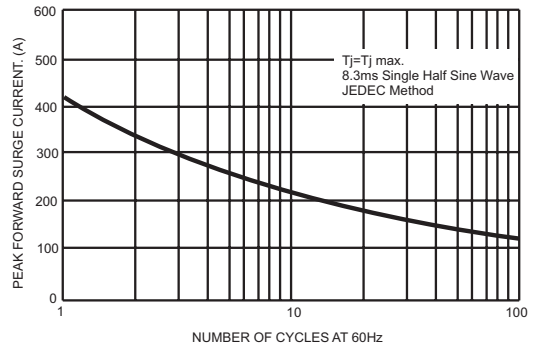


FIG.3- TYPICAL INSTANTANEOUS FORWARD CHARACTERISTICS PER LEG

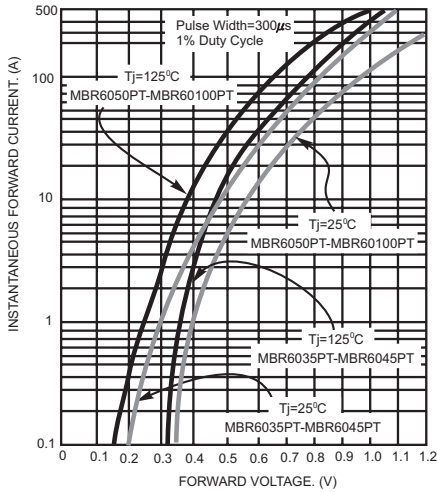


FIG.4- TYPICAL REVERSE CHARACTERISTICS PER LEG

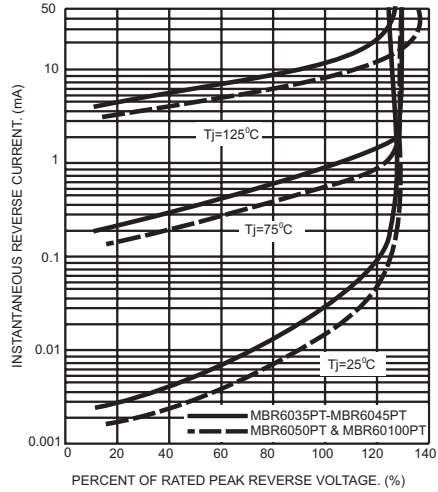


FIG.5- TYPICAL JUNCTION CAPACITANCE PER LEG

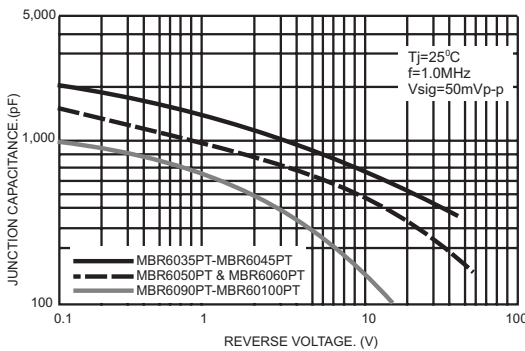


FIG.6- TYPICAL TRANSIENT THERMAL IMPEDANCE PER LEG

