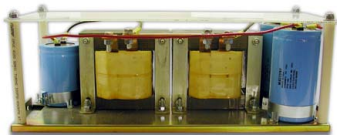


## Power Line Filter 28VDC 250A

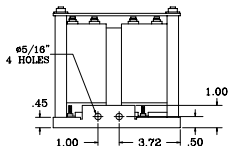
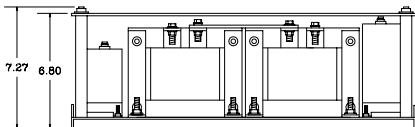
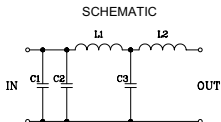
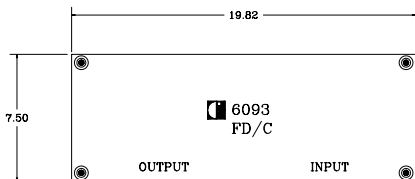
6093

 **FILTRAN**

The 6093 was designed to reduce the ripple noise generated by the inverter circuit in generator sets. This is just one of several custom line filter assemblies that have been designed for a variety of input voltages and currents up to 400A.



### MECHANICAL AND SCHEMATIC (All dimensions in inches)



### ELECTRICAL SPECIFICATION @ 25 °C

Input Voltage		25 VDC
Noise Attenuation	@ 250A load	>30 dBmc
Frequency Attenuation	@20 Hz	>70 dB
(with 50Ω source & load)	Above 1 kHz	>100 dB
Ambient temperature		-40°C to +85°C

ISSUE: P2 01/10/02 6093



**FILTRAN LTD**  
An ISO 9001 Registered Company

229 Colonnade Road, Ottawa, Ontario, Canada K2E 7K3  
Tel: (613) 226-1626 Fax: (613) 226-7124 [www.filtran.com](http://www.filtran.com)