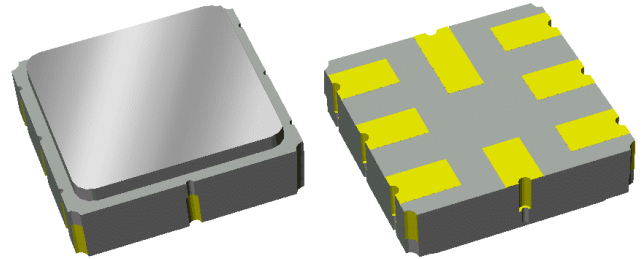


Preliminary Data Sheet

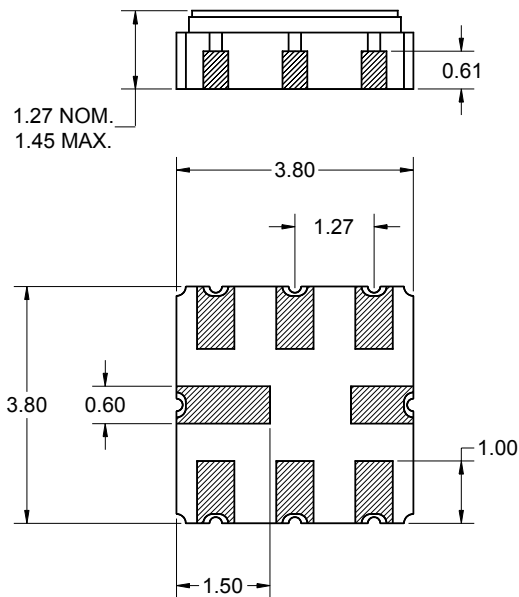
Features

- Usable bandwidth of 4 MHz
- Single-ended operation
- Ceramic Surface Mount Package (SMP)
- Small size



Package

Surface Mount 3.80 x 3.80 x 1.27 mm

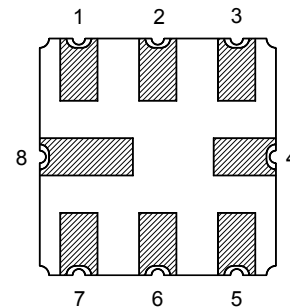


Dimensions shown are nominal in millimeters
All tolerances are $\pm 0.15\text{mm}$ except overall
length and width $\pm 0.10\text{mm}$

Body: Al_2O_3 ceramic
Lid: Kovar, Ni plated
Terminations: Au plating 0.5 - 1.0 μm ,
over a 2 - 6 μm Ni plating

Pin Configuration

Bottom View



Pin No.	Description
2	Output
3	Output Return
6	Input
7	Input Return
1,4,5,8	Case ground

Preliminary Data Sheet

Electrical Specifications ⁽¹⁾

Temperature Range: ⁽²⁾ -30 to +70 °C

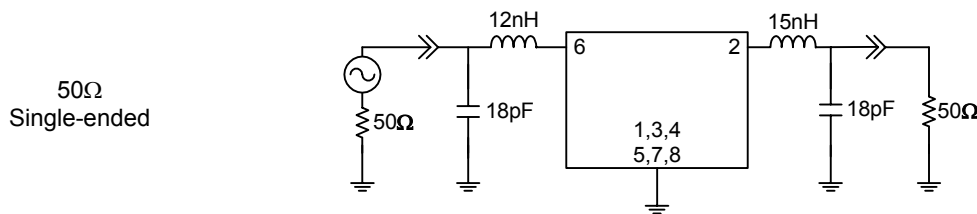
Parameter ⁽³⁾	Minimum	Typical	Maximum	Unit
Center Frequency, f_0	-	380	-	MHz
Insertion Loss at 380 MHz	-	9.5	11	dB
3 dB Bandwidth	4.8	7.3	-	MHz
Passband Ripple ⁽⁴⁾ 378.1 - 381.9 MHz	-	0.65	1.5	dB p-p
Phase Linearity 378 - 382 MHz	-	1.1	4	deg RMS
Relative Attenuation 360 - 373 MHz	28	38	-	dB
387 - 400 MHz	28	36	-	dB
Source Impedance: ⁽⁵⁾	-	50	-	Ω
Load Impedance: ⁽⁵⁾	-	50	-	Ω

Notes:

1. All specifications are based on the test circuit shown below
2. In production, devices will be tested at room temperature to a guardbanded specification to ensure electrical compliance over temperature
3. Electrical margin has been built into the design to account for the variations due to temperature drift and manufacturing tolerances
4. Passband ripple is the worst case peak to adjacent valley over a frequency range defined by the measured roll off at the passband edges
5. This is the optimum impedance in order to achieve the performance shown

Test Circuit:

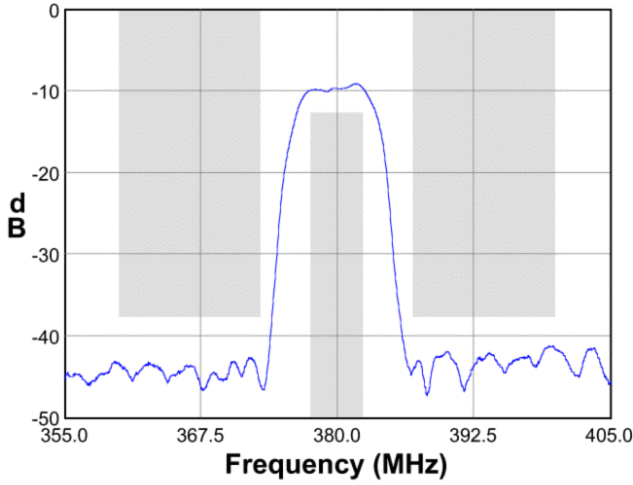
Actual matching values may vary due to PCB layout and parasitics



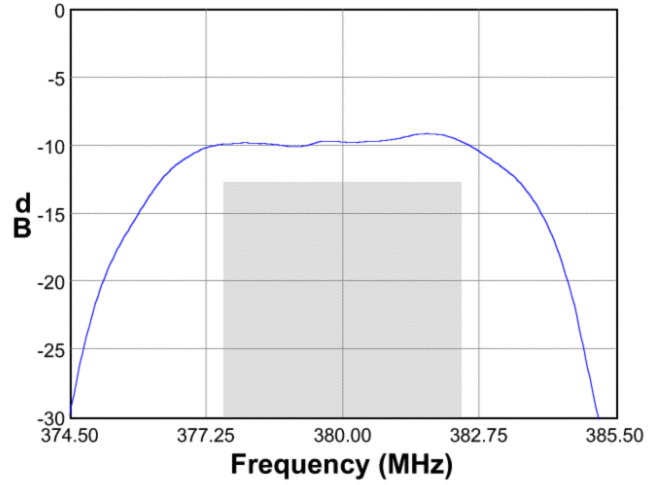
Preliminary Data Sheet

Typical Performance (at +25°C)

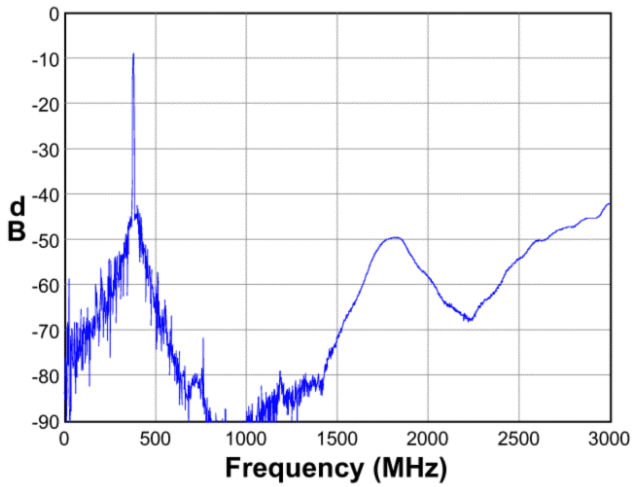
Frequency Response



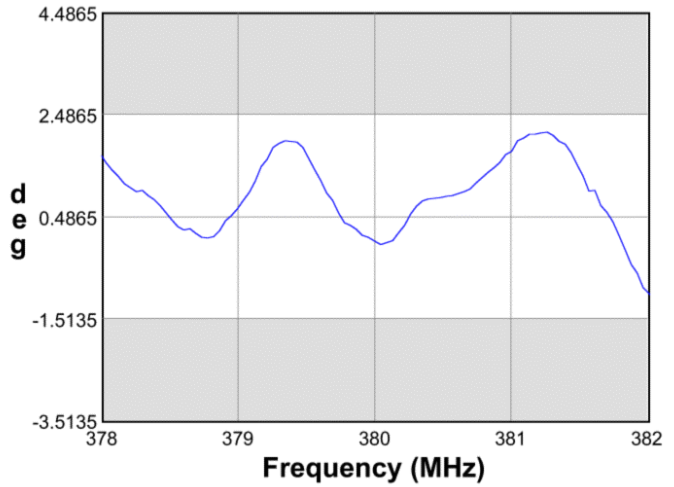
Passband Response



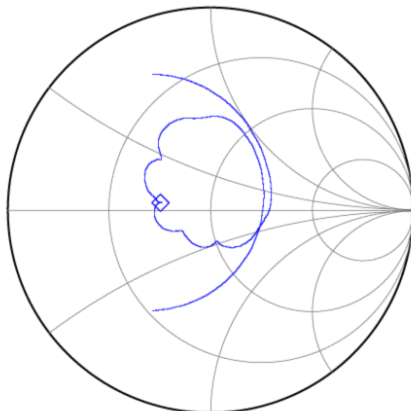
Wideband Response



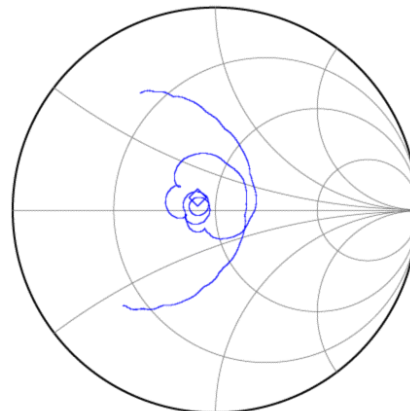
Phase Linearity



Input Smith Chart



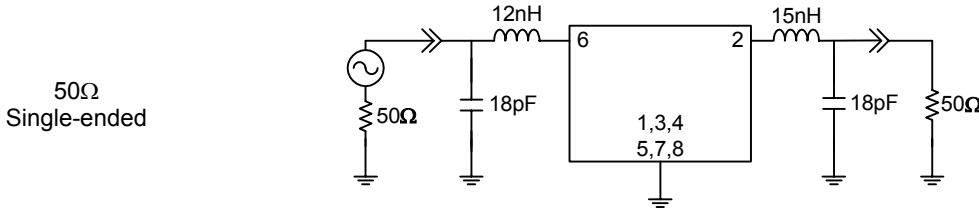
Output Smith Chart



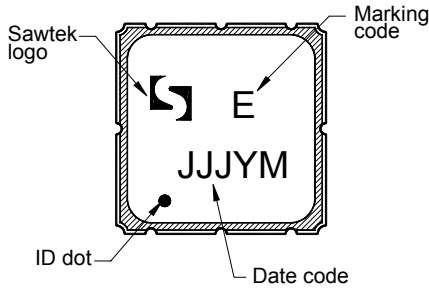
Preliminary Data Sheet

Matching Schematics

Actual matching values may vary due to PCB layout and parasitics

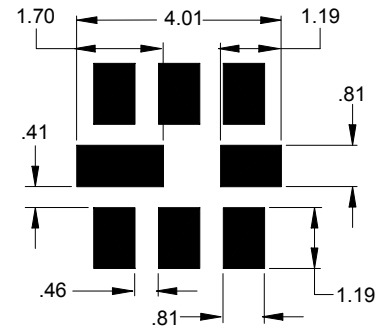


Marking



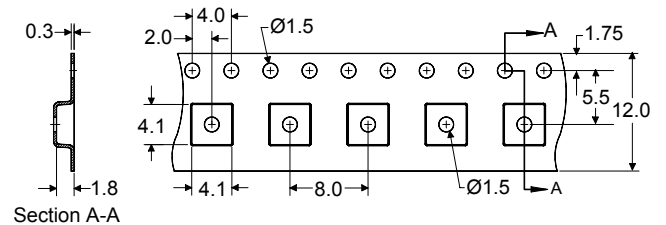
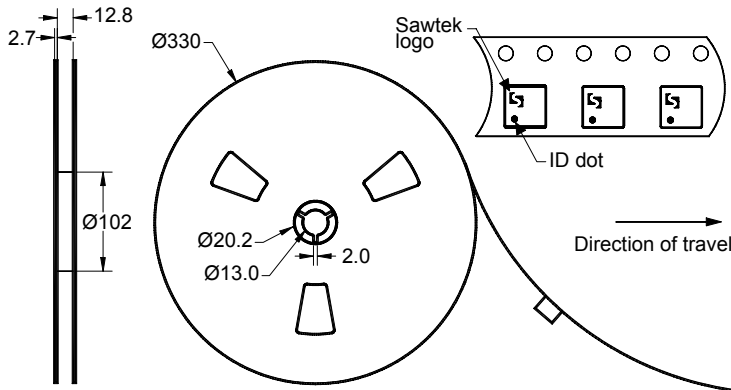
The date code consists of: JJJ = Julian day,
Y = last digit of year, M = manufacturing site code

PCB Footprint



This footprint represents a recommendation only
Dimensions shown are nominal in millimeters

Tape and Reel




Dimensions shown are nominal in millimeters
Packaging quantity: 4000 units/reel

Preliminary Data Sheet

Maximum Ratings

Parameter	Symbol	Minimum	Maximum	Unit
Operating Temperature Range	T	-30	+70	°C
Storage Temperature Range	T _{stg}	-40	+85	°C

Warnings

- Electrostatic Sensitive Device (ESD) 
- Avoid ultrasonic exposure

Links to Additional Technical Information

[PCB Layout Tips](#)

[Qualification Flowchart](#)

[Soldering Profile](#)

[S-Parameters](#)

[Other Technical Information](#)

Contact Information



PO Box 609501
 Orlando, FL 32860-9501
 USA

Phone: +1 (407) 886-8860
 Fax: +1 (407) 886-7061
 Email: custservice@sawtek.com
 Web: www.sawtek.com

Or contact one of our worldwide network of [sales offices](#), [representatives](#) or [distributors](#)