

THRU-HOLE DRUM CORE POWER INDUCTORS



AIRD-01, AIRD-02 SERIES

FEATURES:

- Ferrite core with UL tube
- Wire wound construction
- High current, low DCR

OPTIONS:

- Bulk Pack is standard
- 10% is standard
- Other tolerance available

APPLICATIONS:

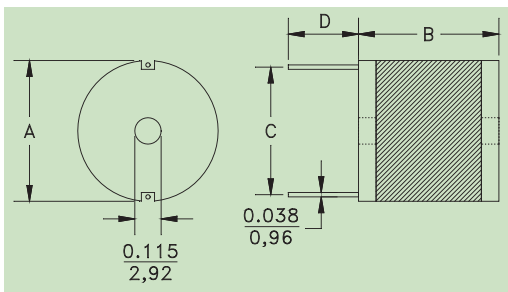
- Electronic Appliance
- Power Supplies
- TRIAC/SCR Control Circuits

STANDARD SPECIFICATIONS:

Part Number AIRD-01	L (μH) ±10%	R _{DC} Max (Ω)	I _{DC} Max (A)	I _{AC} Max (A)
1R0K	1.0	0.003	87.0	9.0
1R2K	1.2	0.003	68.0	9.0
1R5K	1.5	0.004	56.0	9.0
1R8K	1.8	0.004	56.0	9.0
2R2K	2.2	0.005	47.0	9.0
2R7K	2.7	0.005	47.0	9.0
3R3K	3.3	0.005	40.0	9.0
3R9K	3.9	0.006	36.0	9.0
4R7K	4.7	0.007	32.0	9.0
5R6K	5.6	0.007	29.0	9.0
6R8K	6.8	0.008	26.0	9.0
8R2K	8.2	0.009	24.5	9.0
100K	10	0.010	21.2	9.0
120K	12	0.011	19.0	9.0
150K	15	0.015	17.5	7.2
180K	18	0.016	16.5	7.2
220K	22	0.025	15.8	5.5
270K	27	0.030	14.4	4.5
330K	33	0.040	13.2	4.0
390K	39	0.046	11.8	4.0
420K	42	0.050	11.3	3.8
470K	47	0.062	11.0	2.8
560K	56	0.069	10.0	2.8
680K	68	0.077	8.9	2.8
820K	82	0.083	8.2	2.8
101K	100	0.095	7.5	2.8
121K	120	0.127	5.8	2.0
151K	150	0.181	5.6	1.6
181K	180	0.217	5.1	1.6
221K	220	0.240	4.3	1.6
271K	270	0.300	4.1	1.6
331K	330	0.336	3.8	1.3
391K	390	0.460	3.3	1.0
471K	470	0.636	3.2	0.8
561K	560	0.696	2.9	0.8

Part Number AIRD-02	L (μH) ±10%	R _{DC} Max (Ω)	I _{DC} Max (A)	I _{AC} Max (A)
1R0K	1.0	0.003	108	11.4
1R2K	1.2	0.003	108	11.4
1R5K	1.5	0.003	83	11.4
1R8K	1.8	0.003	68	11.4
2R2K	2.2	0.004	68	11.4
2R7K	2.7	0.005	58	11.4
3R3K	3.3	0.005	58	11.4
3R9K	3.9	0.005	50	11.4
4R7K	4.7	0.005	50	11.4
5R6K	5.6	0.006	44	11.4
6R8K	6.8	0.007	39	11.4
8R2K	8.2	0.007	36	11.4
100K	10	0.009	30	11.4
120K	12	0.009	27	11.4
150K	15	0.013	25	9.0
180K	18	0.018	22	7.2
220K	22	0.019	21	7.2
270K	27	0.026	20	5.5
330K	33	0.029	18	5.5
390K	39	0.030	17	5.5
470K	47	0.035	15	5.5
560K	56	0.039	13	5.5
680K	68	0.053	12	4.8
820K	82	0.060	11	4.8
101K	100	0.080	10	4.0
121K	120	0.090	9.4	4.0
151K	150	0.098	8.6	4.0
181K	180	0.110	7.8	4.0
221K	220	0.150	7.0	2.8
271K	270	0.213	6.3	2.0
331K	330	0.305	5.2	1.6
391K	390	0.320	4.9	1.6
471K	470	0.355	4.5	1.6
561K	560	0.388	4.1	1.6
681K	680	0.430	3.7	1.6
821K	820	0.590	3.4	1.3
102K	1000	0.818	3.1	1.0
122K	1200	1.140	2.7	0.8
152K	1500	1.260	2.4	0.8
182K	1800	1.390	2.2	0.8
222K	2200	1.540	2.0	0.8

PHYSICAL CHARACTERISTICS:



- UL Heat Shrink Tubing
 - Operating Temp: -40°C to 125°C
 - L_p measure at 100 KHz 0.1VRMS.
 - Tolerance: K=±10%, tighter tolerance available
 - Check SCD for detail E&M specification
 - IDC: L_p drops 10% typical from its initial value
 - IAC: ΔT of 40°C temperature rise max
 - Marking: Inductance value and tolerance
- Note: All specifications subject to change without notice

	AIRD-01	AIRD-02
A Max	0.610 (15,50)	0.83 (21,1)
B Max	0.825 (21,00)	0.830 (21,1)
C Typ	0.59 (15,0)	0.75 (19,1)
D	0.50 (12,7)	0.50 (12,7)