



SAW Components

Data Sheet B4050





SAW Components

B4050

Low Loss Filter

1575.42 MHz

Data Sheet



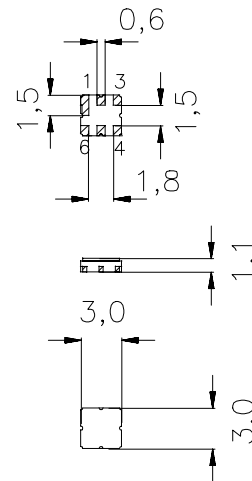
Ceramic package **DCC6D**

Features

- Low loss RF filter for GPS receivers
- Usable passband 2,4 MHz
- Low insertion attenuation, low amplitude ripple
- Unbalanced to balanced operation
- Ceramic package for **Surface Mounted Technology (SMT)**

Terminals

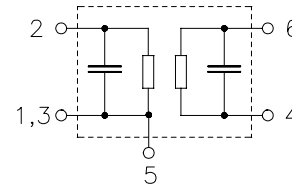
- Ni, gold-plated



Dimensions in mm, approx. weight 0,037 g

Pin configuration

- | | |
|---------|-------------------|
| 2 | Input, unbalanced |
| 4, 6 | Output, balanced |
| 1, 3, 5 | To be grounded |
| 1, 3, 5 | Case ground |



| Type | Ordering code | Marking and Package according to | Packing according to |
|-------|-------------------|----------------------------------|----------------------|
| B4050 | B39162-B4050-U510 | C61157-A7-A68 | F61074-V8089-Z000 |

Electrostatic Sensitive Device (ESD)

Maximum ratings

| | | | | |
|----------------------------|-----------|-----------|-----|------------------------------|
| Operable temperature range | T | -40 / +85 | °C | source impedance 50 Ω |
| Storage temperature range | T_{stg} | -40 / +85 | °C | |
| DC voltage | V_{DC} | 0 | V | |
| Source power | P_S | 0 | dBm | |



SAW Components

B4050

Low Loss Filter

1575.42 MHz

Data Sheet



Characteristics

Operating temperature range: $T = -40\text{ °C to }+85\text{ °C}$
 Terminating source impedance: $Z_S = 50\ \Omega$
 Terminating load impedance: $Z_L = 50\ \Omega$ (balanced)

| | | min. | typ. | max. | |
|--------------------------------------|-------------------------|------|---------|------|-----|
| Center frequency | f_C | — | 1575,42 | — | MHz |
| Maximum insertion attenuation | α_{max} | — | 3,3 | 3,8 | dB |
| | 1574,22 ... 1576,62 MHz | | | | |
| Amplitude ripple (p-p) | $\Delta\alpha$ | — | 0,3 | 1,0 | dB |
| | 1574,22 ... 1576,62 MHz | | | | |
| Attenuation | α | | | | |
| | 0,00 ... 1250,00 MHz | 50,0 | 60,0 | — | dB |
| | 1425,00 ... 1525,00 MHz | 37,0 | 50,0 | — | dB |
| | 1525,00 ... 1535,42 MHz | 30,0 | 44,0 | — | dB |
| | 1615,42 ... 1625,00 MHz | 20,0 | 44,0 | — | dB |
| | 1625,00 ... 1675,00 MHz | 37,0 | 46,0 | — | dB |
| | 1675,00 ... 1850,00 MHz | 40,0 | 60,0 | — | dB |
| | 1850,00 ... 1910,00 MHz | 50,0 | 60,0 | — | dB |
| | 1910,00 ... 2500,00 MHz | 40,0 | 55,0 | — | dB |
| | 2500,00 ... 4000,00 MHz | 20,0 | 52,0 | — | dB |



SAW Components

B4050

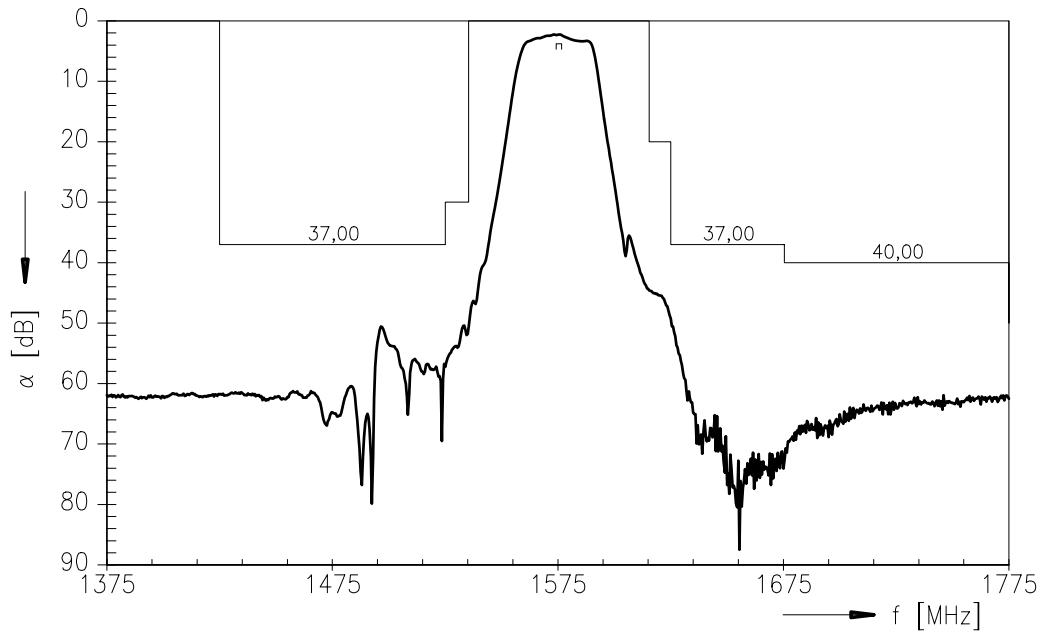
Low Loss Filter

1575.42 MHz

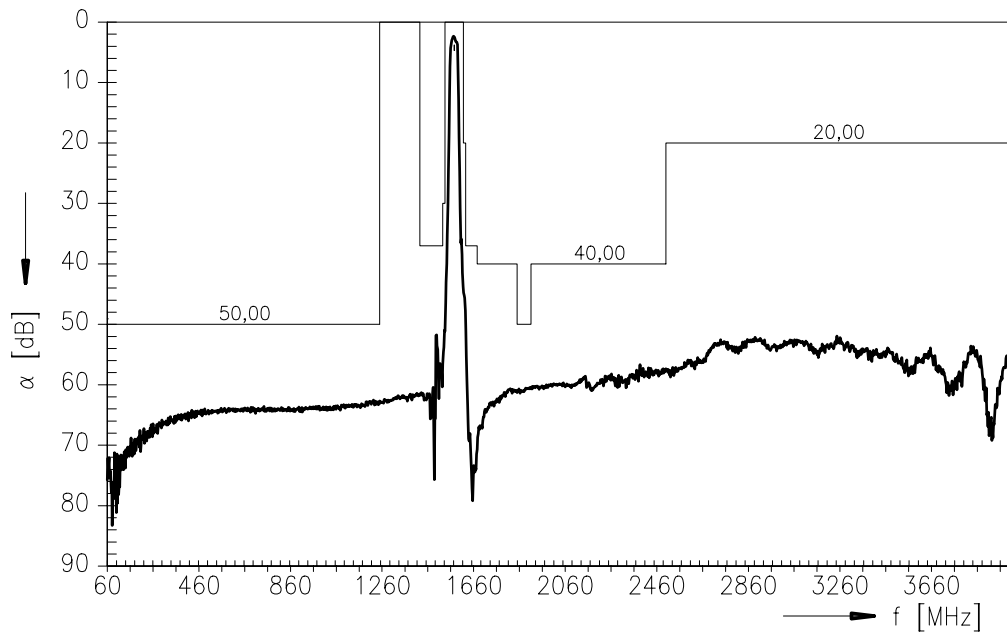
Data Sheet



Transfer function



Transfer function (wide band)





SAW Components

B4050

Low Loss Filter

1575.42 MHz

Data Sheet



Published by EPCOS AG

Surface Acoustic Wave Components Division, OFW E NK

P.O. Box 80 17 09, D-81617 München

© EPCOS AG 1999. All Rights Reserved.

As far as patents or other rights of third parties are concerned, liability is only assumed for components per se, not for applications, processes and circuits implemented within components or assemblies.

The information describes the type of component and shall not be considered as assured characteristics.

Terms of delivery and rights to change design reserved.

For questions on technology, prices and delivery please contact the sales offices of EPCOS AG or the international representatives.

Due to technical requirements components may contain dangerous substances. For information on the type in question please also contact one of our sales offices.