

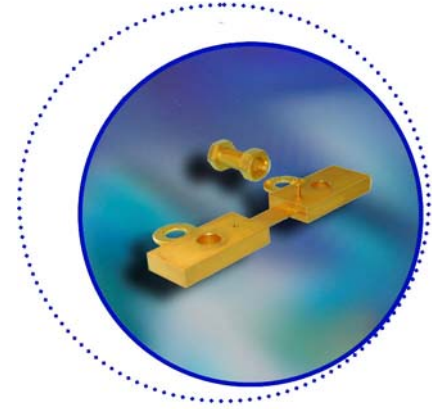
## HIGH CURRENT CHASSIS MOUNT SHUNT RESISTORS

### Features

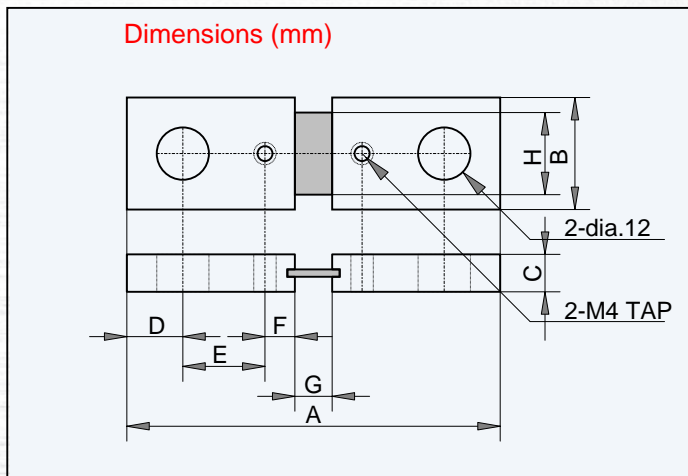
- Excellent long-term stability.
- Low TCR.
- Easy current measurement.
- High current shunt resistors.
- Low loss, extremely low sense voltage.
- 

### Applications

- High precision power supplies.
- Power converters.
- Current measurement instrumentation.
- Power generation industry equipment.



### Specifications and Performances



+/-0.2 mm	BHCS100	BHCS200	BHCS400	BHCS1000
A	100	100	100	100
B	30	30	30	70
C	10	10	10	20
D	15	15	15	15
E	22	22	22	22
F	8	8	8	8
G	10	10	10	10
H	13	26	26	65

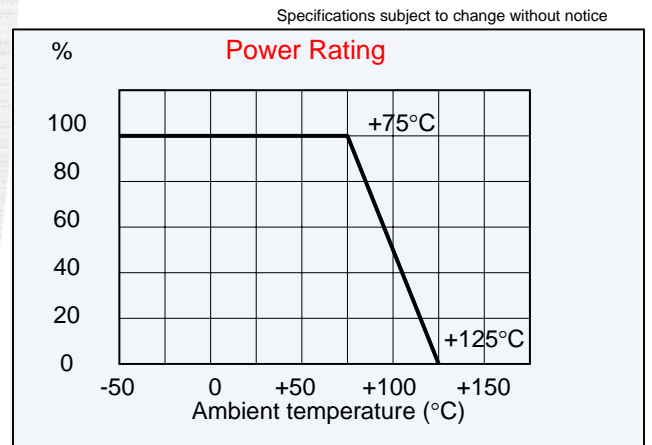
### Material

Terminal: Cu plated Ni.  
Resistance: Manganin.  
Junction: Weld.

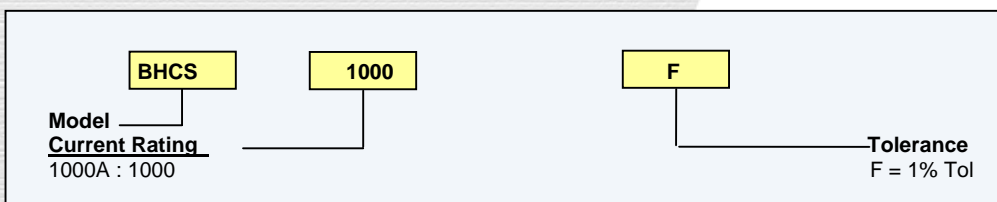
ITEM	BHCS 100	BHCS 400	BHCS 600	BHCS 1000
Current Rating	100A	400A	600A	1000A
Output Voltage <sup>1</sup>	60mV	60mV	60mV	60mV
Resistance (milliohms)	(0.6)	(0.15)	(0.1)	(0.06)
Tolerance (%)	±1	±1	±1	±1
TCR (ppm/°C)	±100	±100	±100	±100
Thermal Resistance (°C/W)	1.5	0.55	0.42	0.23
Operating Temp.	-55 - +125 °C			
Storage Temp.	-55 - +125 °C			
Weight (Kg)	0.24	0.24	0.24	0.56

Note:

- (1) 100 mV rating voltage is available.
- (2) Test data is available on request.
- (3) Terminal screws are available



### Ordering Information



BHCS