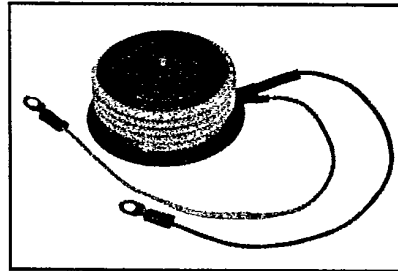
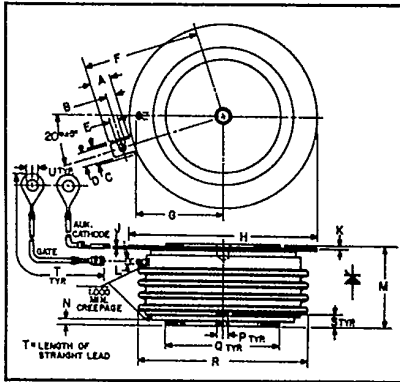




C390_X500

Powerex, Inc. Hillis Street, Youngwood, Pennsylvania 15697 (412) 925-7272
 Powerex Europe, S.A., 428 Ave. G. Durand, BP107, 72003 LeMans, France (43) 72.75.15

Phase Control SCR
620 Amperes Avg
100-600 Volts



C390_X500
Phase Control SCR
 620 Amperes/100-600 Volts

C390_X500
Outline Drawing

Dimensions	Inches		Millimeters	
	Min.	Max.	Min.	Max.
A	.240	.260	6.096	6.604
B	.110	.130	2.794	3.302
C	.245	---	6.223	---
D	.186	.191	4.724	4.851
E	.060	.075	1.524	1.905
F	---	1.430	---	36.32
G	---	1.065	---	27.051
H	2.200	2.500	55.88	63.50
J	.011	.019	2.794	3.483
K	.030	.130	.762	3.302
L	.056	.060	1.422	1.524
M	1.000	1.065	25.40	27.05
N	.030	.096	.762	2.438
P	.130	.150	3.302	3.810
Q	1.300	1.345	33.02	34.16
R	---	2.150	---	54.61
S	.067	.803	1.702	2.110
T	12.200	12.360	309.9	313.9
U	.137	.153	3.480	3.886

Description

Powerex Silicon Controlled Rectifiers (SCR) are designed for phase control applications. These are all-diffused, Press-Pak (Pow-R-Disc) devices employing the field-proven amplifying (di/namic) gate.

Features:

- Low On-State Voltage
- High di/dt
- High dv/dt
- Hermetic Packaging
- Excellent Surge and I²t Ratings

Applications:

- Power Supplies
- Battery Chargers
- Motor Control
- Light Dimmers
- VAR Generators

Ordering Information

Example: Select the complete nine digit part number you desire from the table - i.e. C390DX500 is a 400 Volt, 620 Ampere Phase Control SCR.

Type	Voltage		Current
	V _{ORM} V _{RRM}	Code	
C390_X500	100	A	620
	200	B	
	300	C	
	400	D	
	500	E	
	600	M	



T-25-20

Powerex, Inc., Hillis Street, Youngwood, Pennsylvania 15697 (412) 925-7272
 Powerex Europe, S.A., 428 Ave. G. Durand, BP107, 72003 LeMans, France (43) 72.75.15

C390_X500
 Phase Control SCR
 620 Amperes Avg/100-600 Volts

Absolute Maximum Ratings

	Symbol	C390_X500	Units
RMS On-State Current	$I_{T(RMS)}$	975	Amperes
Average On-State Current	$I_{T(av)}$	620	Amperes
Peak One-Cycle Surge (Non Repetitive) On-State Current (60Hz)	I_{TSM}	10,000	Amperes
Peak One-Cycle Surge (Non-Repetitive) On-State Current (50Hz)	I_{TSM}	9500	Amperes
Critical Rate-of-Rise of On-State Current (Non-Repetitive)	di/dt	400	Amperes/ μ s
Critical Rate-of-Rise of On-State Current (Repetitive)	di/dt	150	Amperes/ μ s
I^2t (for Fusing), One Cycle at 60Hz	I^2t	416,500	A ² sec
Peak Gate Power Dissipation, 40 μ sec Pulse	P_{GM}	200	Watts
Average Gate Power Dissipation	$P_{G(av)}$	5	Watts
Storage Temperature	T_{STG}	-40 to 150	$^{\circ}$ C
Operating Temperature	T_J	-40 to 125	$^{\circ}$ C
Mounting Force [Ⓞ]		1800 to 2200	lb.
Mounting Force [Ⓞ]		8 to 9.8	kN

Electrical and Thermal Characteristics

Characteristics	Symbol	Test Conditions	C390_X500	Units
Voltage—Blocking State Maximums				
Forward Leakage, Peak	I_{DRM}	$T_J = 125^{\circ}\text{C}, V = V_{DRM}$	50	mA
Reverse Leakage, Peak	I_{RRM}	$T_J = 125^{\circ}\text{C}, V = V_{RRM}$	50	mA
Current—Conducting State Maximums				
Peak On-State Voltage	V_{TM}	$I_{TM} = 3000\text{A}; T_J = 25^{\circ}\text{C}$	1.9	Volts
Switching				
Typical Turn-Off Time	t_q	$T_J = 125^{\circ}\text{C}, I_{TM} = 500\text{Amps}; V_R = 50\text{Volts Min.}; V_{DRM}$ (Reapplied); Rate-of-Rise of Reapplied Off-State Voltage = $20\text{V}/\mu\text{sec}$ (linear); Commutation $di/dt = 25\text{A}/\mu\text{sec}$; Repetition Rate = 1 pps; Gate Bias During Turn-Off Interval = 0 Volts, 100Ω	125	μsec
Typical Delay Time	t_d	$T_J = 25^{\circ}\text{C}, I_{TM} = 50\text{A}, V_{DRM}$ Rated. Gate Supply: 20 Volts, $20\Omega, 0.1\mu\text{sec}$ Max. Rise Time	0.7	μsec
Min. Critical dv/dt exponential to V_{DRM}	dv/dt	$T_J = 125^{\circ}\text{C}, \text{Gate Open}$	200	$\text{V}/\mu\text{sec}$
Thermal				
Maximum Thermal Resistance, [Ⓞ] double sided cooling				
Junction to Case	$R_{\theta JC}$.06	$^{\circ}\text{C}/\text{Watt}$
Case to Sink, Lubricated	$R_{\theta CS}$.02	$^{\circ}\text{C}/\text{Watt}$
Gate—Maximum Parameters				
Gate Current to Trigger	I_{GT}	$V_D = 6\text{Vdc}, T_J = 25^{\circ}\text{C}, R_L = 3\Omega$	200	mA
Gate Voltage to Trigger	V_{GT}	$T_J = -40^{\circ}\text{C}$ to $125^{\circ}\text{C}, V_D = \text{Vdc}, R_L = 3\Omega$	5	Volts
Non-Trigging Gate Voltage	V_{GDM}	$T_J = 125^{\circ}\text{C}, \text{rated } V_{DRM}, R_L = 1000\Omega$.15	Volts
Peak Forward Gate Current	I_{GTM}		10	Amperes
Peak Reverse Gate Voltage	V_{GRM}		5	Volts

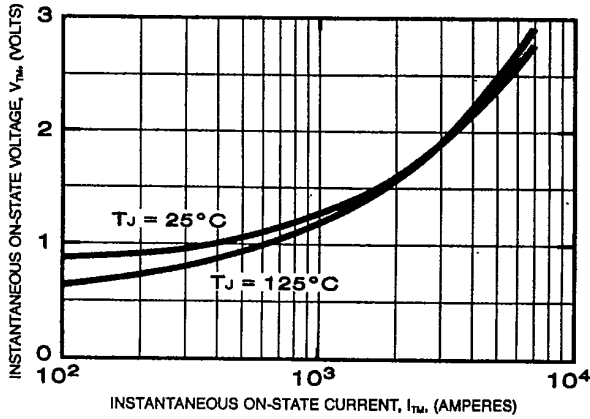
[Ⓞ] Consult recommended mounting procedures.



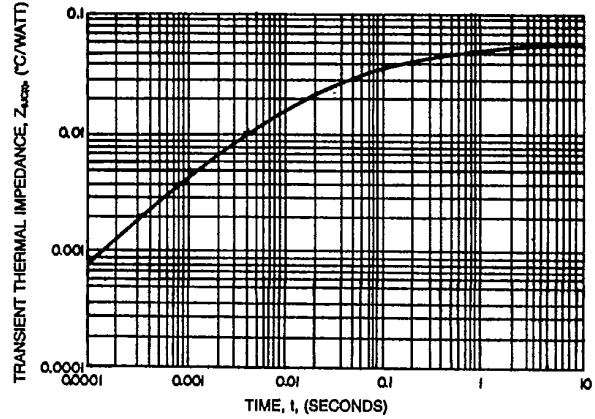
Powerex, Inc., Hills Street, Youngwood, Pennsylvania 15697 (412) 925-7272
 Powerex Europe, S.A., 428 Ave. G. Durand, BP107, 72003 LeMans, France (43) 72.75.15

C390_X500
 Phase Control SCR
 620 Amperes Avg/100-600 Volts

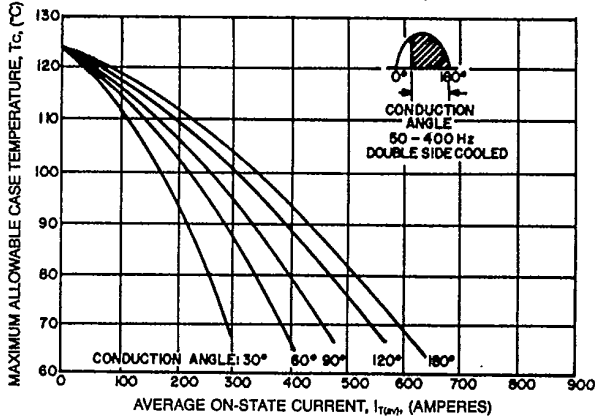
MAXIMUM ON-STATE CHARACTERISTICS



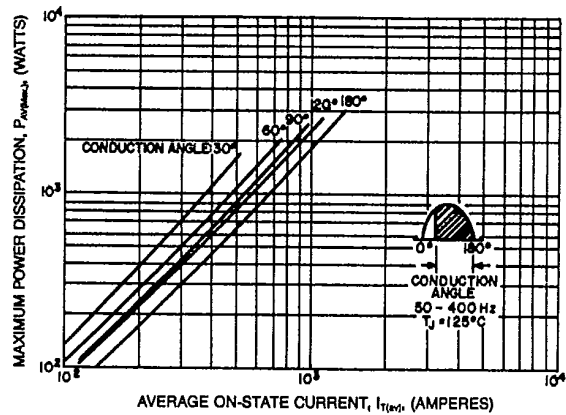
TRANSIENT THERMAL IMPEDANCE CHARACTERISTICS (JUNCTION TO CASE)



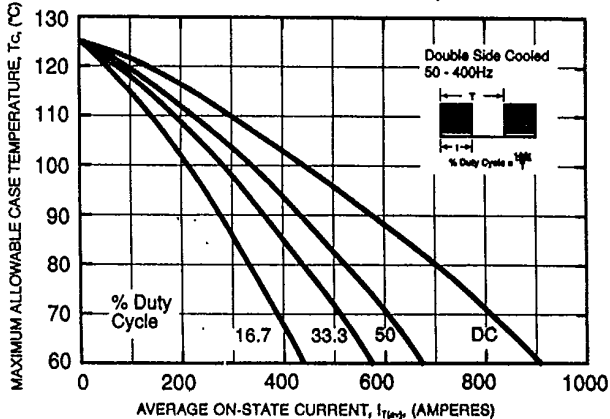
MAXIMUM ALLOWABLE CASE TEMPERATURE (SINUSOIDAL WAVEFORM)



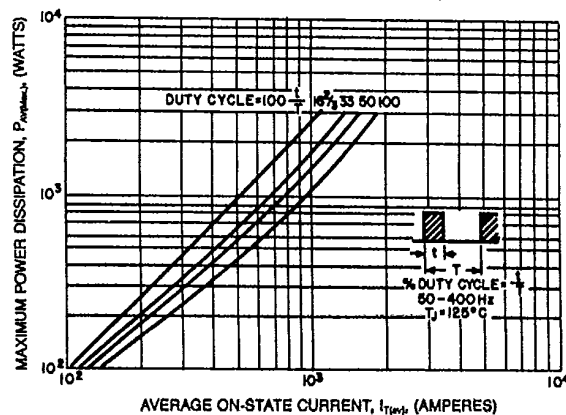
MAXIMUM ON-STATE POWER DISSIPATION (SINUSOIDAL WAVEFORM)



MAXIMUM ALLOWABLE CASE TEMPERATURE (RECTANGULAR WAVEFORM)



MAXIMUM ON-STATE POWER DISSIPATION (RECTANGULAR WAVEFORM)



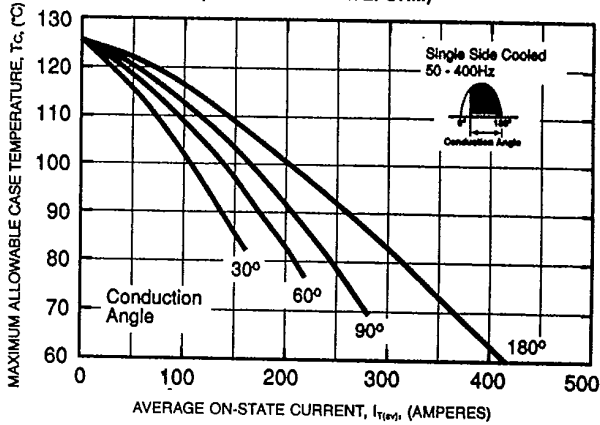


T-25-20

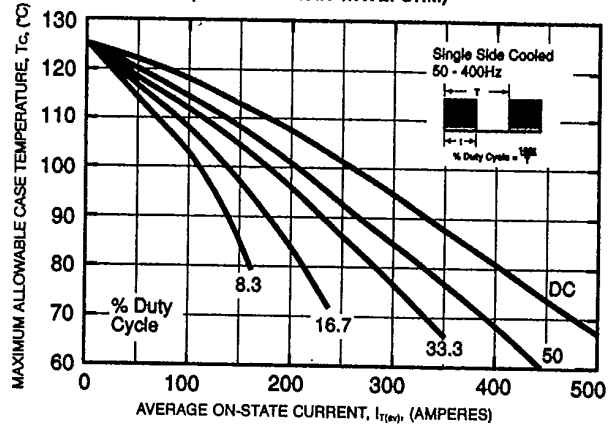
Powerex, Inc., Hillis Street, Youngwood, Pennsylvania 15697 (412) 925-7272
 Powerex Europe, S.A., 428 Ave. G. Durand, BP107, 72003 LeMans, France (43) 72.75.15

C390_X500
 Phase Control SCR
 620 Amperes Avg/100-600 Volts

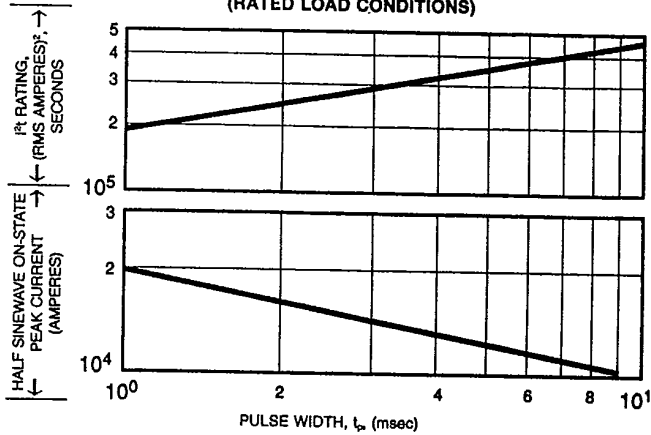
MAXIMUM ALLOWABLE CASE TEMPERATURE (SINUSOIDAL WAVEFORM)



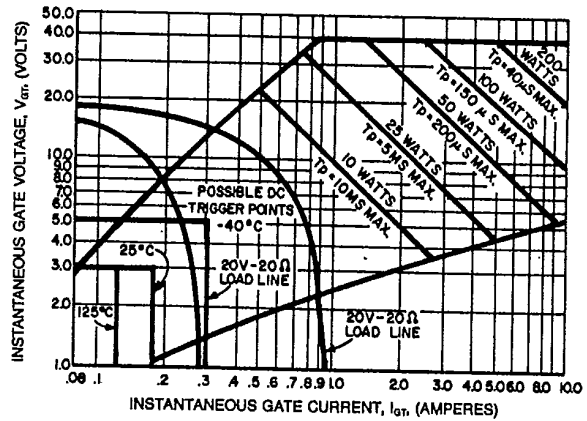
MAXIMUM ALLOWABLE CASE TEMPERATURE (RECTANGULAR WAVEFORM)



SUB-CYCLE SURGE AND I^2t RATINGS (RATED LOAD CONDITIONS)



GATE CHARACTERISTICS



NOTES:

- Maximum allowable average gate dissipation = 5 watts.
 - The locus of possible dc trigger points lie outside the boundaries shown at various case temperatures.
 - T_p = Rectangular gate current pulse width (5μs min. duration; 1.0 μs max. rise time for 20V, 65 Ω source).
 - 20 V - 20 Ω is the minimum gate source load line when rate of circuit current rise > 100 Amp/μs or anode rate of current rise > 200 Amps/μs (T_p = 5 μs min., 0.5μs max. rise time).
- Maximum long-term repetitive anode di/dt = 500 Amps/μs with 20V - 20 Ω gate source.