

# CRF24060

## 60 W, SiC RF Power MESFET

Cree's CRF24060 is an unmatched silicon carbide (SiC) RF power Metal-Semiconductor Field-Effect Transistor (MESFET). SiC has superior properties compared to silicon or gallium arsenide, including higher breakdown voltage, higher saturated electron drift velocity, and higher thermal conductivity. SiC MESFETs offer greater efficiency, greater power density, and wider bandwidths compared to Si and GaAs transistors.



Package Type: 440193  
PN: CRF24060F

### FEATURES

- 13 dB Small Signal Gain
- High Efficiency
- 50 W minimum  $P_{1dB}$
- Up to 2400 MHz Operation
- 48 V Operation
- High Breakdown Voltage
- High Temperature Operation

### APPLICATIONS

- Wideband Military Communications
- Secure Comms for Homeland Defense
- Class A, A/B Amplifiers
- TDMA, EDGE, CDMA, W-CDMA
- Broadband Amplifiers
- MMDS

### Typical Performance

- Drain Efficiency of 45% at 1500 MHz at 60 W  $P_{OUT}$
- IMD -31 dBc at 1000 MHz at 50 W PEP
- 13 dB Small Signal Gain at 1500 MHz
- 60 W @  $P_{1dB}$  at 1500 MHz
- 80 W  $P_{3dB}$  at 1500 MHz

Note: Measured in amplifier circuit CRF24060-TB at  $V_{DS} = 48$  V,  $I_{DQ} = 2000$  mA.





## Absolute Maximum Ratings (not simultaneous) at 25 °C Case Temperature

Parameter	Symbol	Rating	Units
Drain-source Voltage	$V_{DSS}$	120	Volts
Gate to source Voltage	$V_{GS}$	-20, +3	Volts
Storage Temperature	$T_{STG}$	-55, +150	°C
Operating Junction Temperature	$T_J$	255	°C
Thermal Resistance, Junction to Case	$R_{\theta JC}$	1.4	°C/W
Soldering Temperature	$T_S$	225	°C

## Electrical Characteristics ( $T_C = 25^\circ\text{C}$ )

Characteristics	Symbol	Min.	Typ.	Max.	Units	Conditions
<b>DC Characteristics</b>						
Gate Threshold Voltage	$V_{GS(th)}$	-13	-10	-	VDC	$V_{DS} = 10\text{ V}, I_D = 2.5\text{ mA}$
Gate Quiescent Voltage	$V_{GS(Q)}$	-	-7	-	VDC	$V_{DS} = 48\text{ V}, I_D = 2000\text{ mA}$
Zero Gate Voltage Drain Current	$I_{DSS}$	6.0	7.5	9.0	A	$V_{DS} = 10\text{ V}, V_{GS} = 0\text{ V}$
Drain-Source Breakdown Voltage	$V_{(BR)DSS}$	100	-	-	VDC	$V_{GS} = -18, I_D = 50\text{ mA}$
Forward Transconductance	$g_m$	700	800	-	mS	$V_{DS} = 48\text{ V}, I_D = 2000\text{ mA}$
Case Operating Temperature	$T_C$	-30	-	125	°C	
Screw Torque	T	-	-	80	in-oz	Reference 440193 Rev 1
<b>RF Characteristics</b>						
Gain	$G_{SS}$	10	13	-	dB	$V_{DD} = 48\text{ V}, I_{DQ} = 2000\text{ mA}, f = 1500\text{ MHz}$
Power Output at 1 dB Compression	$P_{1dB}$	50	60	-	W	$V_{DD} = 48\text{ V}, I_{DQ} = 2000\text{ mA}, f = 1500\text{ MHz}$
Power Output at 3 dB Compression	$P_{3dB}$	-	80	-	W	$V_{DD} = 48\text{ V}, I_{DQ} = 2000\text{ mA}, f = 1500\text{ MHz}$
Drain Efficiency <sup>1,2</sup>	$\eta$	40	45	-	%	$V_{DD} = 48\text{ V}, I_{DQ} = 2000\text{ mA}, f = 1500\text{ MHz}, P_{OUT} = P_{1dB}$
Intermodulation Distortion	$IMD_3$	-	-31	-	dBc	$V_{DD} = 48\text{ V}, I_{DQ} = 2000\text{ mA}, f_1 = 1000\text{ MHz}, f_2 = 1000.1\text{ MHz}, P_{OUT} = 50\text{ W PEP}$
Output Mismatch Stress	VSWR	10 : 1	-	-	$\Psi$	No damage at all phase angles, $V_{DD} = 48\text{ V}, I_{DQ} = 2000\text{ mA}, f = 1000\text{ MHz}, P_{OUT} = 50\text{ W CW}$

Notes:

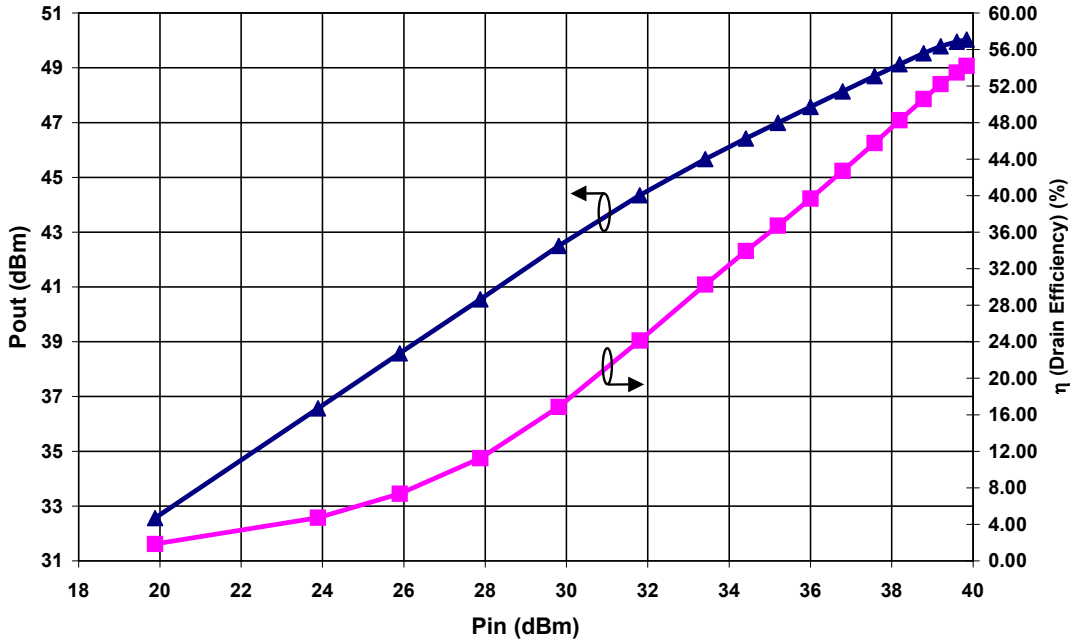
<sup>1</sup> Drain Efficiency =  $P_{OUT} / P_{DC}$

<sup>2</sup> Power Added Efficiency (PAE) =  $(P_{OUT} - P_{IN}) / P_{DC}$

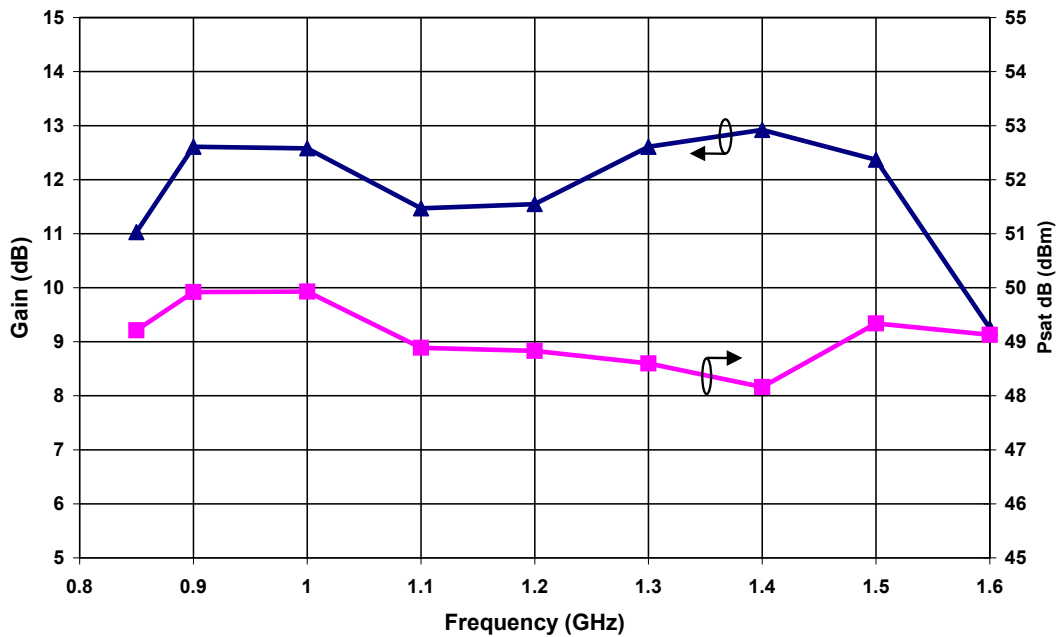


Typical Performance ( $T_c = 25^\circ C$ ,  $V_{DS} = 48 V$ ,  $I_{DQ} = 2000 mA$  in Flange Package)

### Typical Power Performance Swept CW Data vs Power at 1000 MHz



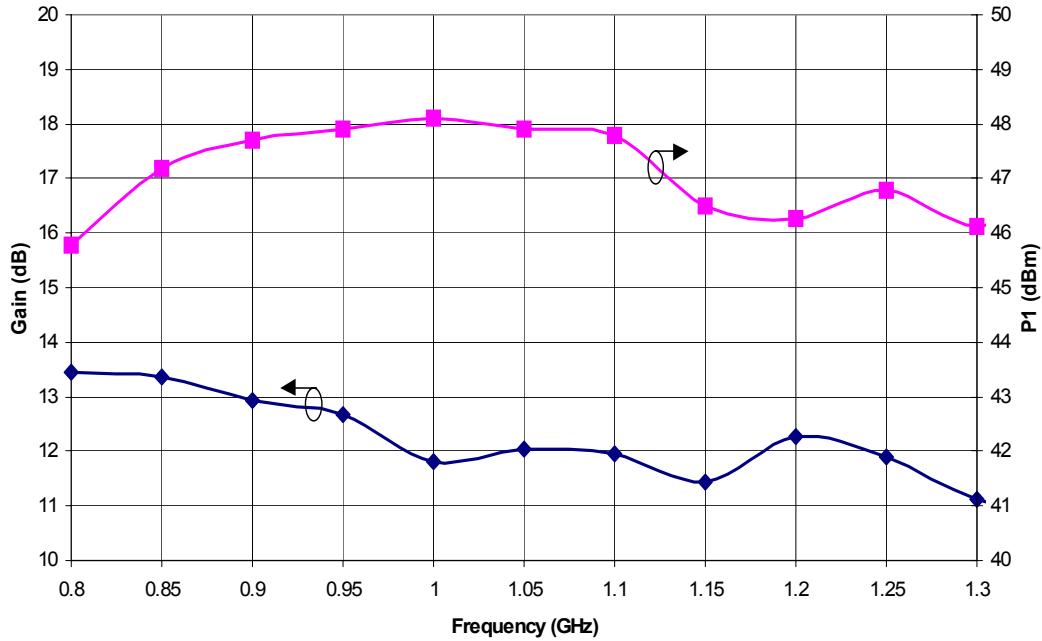
### Typical Wideband Performance Swept CW Data vs Frequency



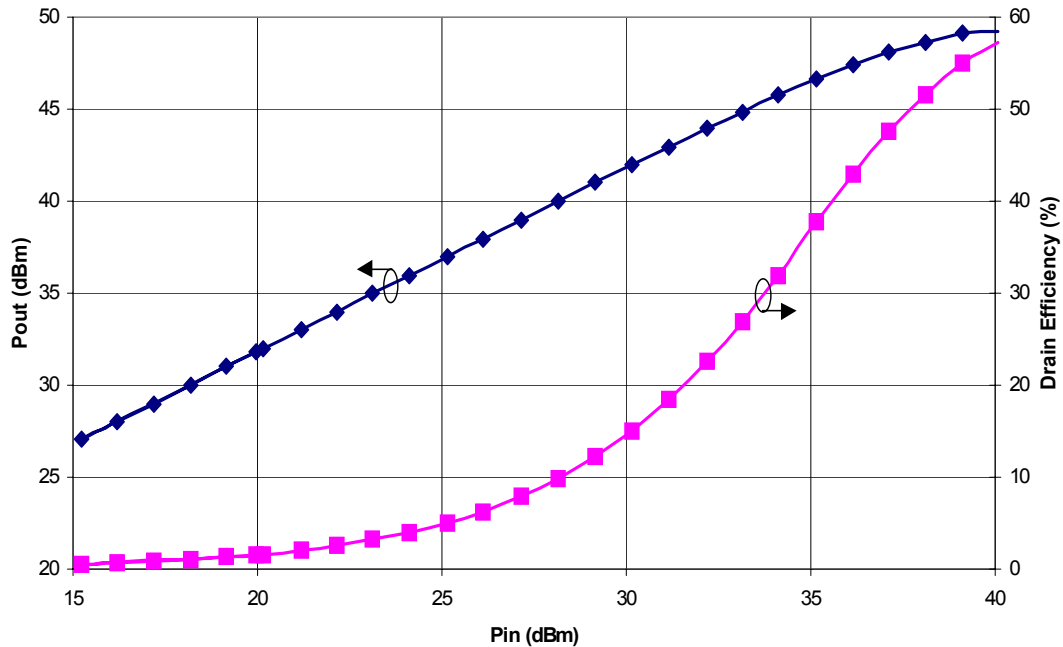


Typical Performance ( $V_{DS} = 48\text{ V}$ ,  $I_{DQ} = 2000\text{ mA}$  in the Flange Package)

Typical CW Gain and P1dB vs Frequency



CW Power Sweep at 1.0 GHz





**Typical Package S-Parameters**  
**(Small Signal,  $V_{DS} = 48\text{ V}$ ,  $I_{DQ} = 2000\text{ mA}$ , magnitude / angle)**

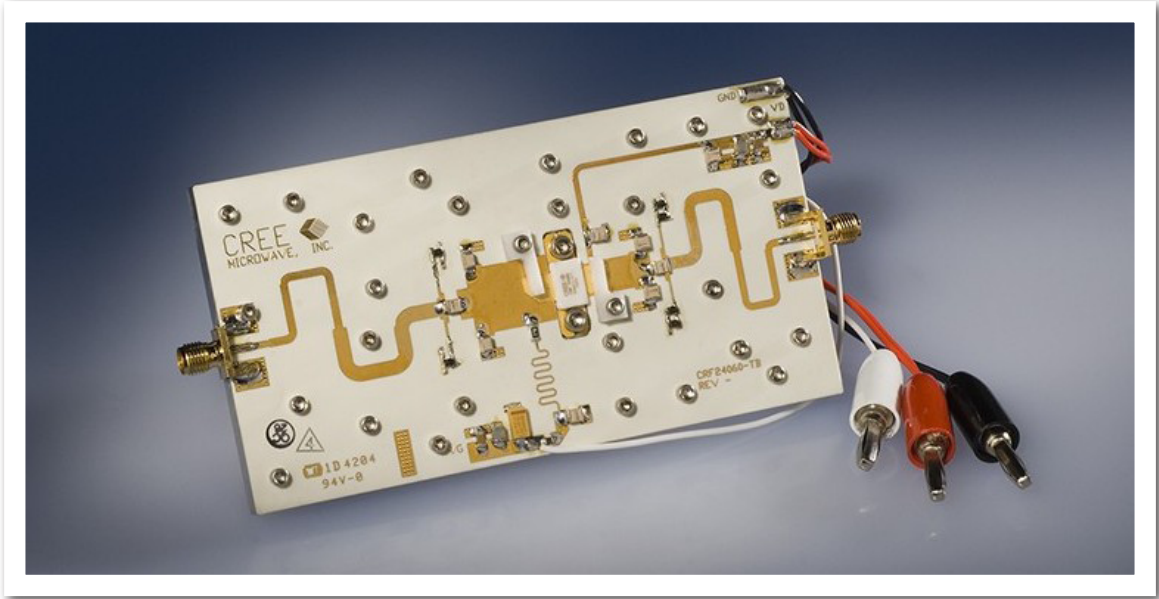
Frequency	S(1,1)	S(2,1)	S(1,2)	S(2,2)
100.0MHz	0.938 / -118.952	11.369 / 117.037	0.027 / 27.543	0.733 / -167.222
200.0MHz	0.924 / -147.861	6.296 / 100.583	0.030 / 11.594	0.786 / -173.220
300.0MHz	0.921 / -159.138	4.291 / 92.762	0.031 / 4.279	0.798 / -175.909
400.0MHz	0.919 / -165.208	3.247 / 87.448	0.031 / -0.529	0.803 / -177.489
500.0MHz	0.919 / -169.113	2.610 / 83.182	0.031 / -4.290	0.806 / -178.595
600.0MHz	0.919 / -171.919	2.183 / 79.451	0.031 / -7.515	0.807 / -179.462
700.0MHz	0.919 / -174.094	1.878 / 76.032	0.031 / -10.429	0.809 / 179.805
800.0MHz	0.919 / -175.877	1.648 / 72.813	0.031 / -13.144	0.810 / 179.152
900.0MHz	0.919 / -177.401	1.470 / 69.730	0.031 / -15.722	0.811 / 178.547
1.000GHz	0.919 / -178.747	1.328 / 66.746	0.031 / -18.201	0.812 / 177.972
1.100GHz	0.919 / -179.968	1.212 / 63.837	0.032 / -20.607	0.813 / 177.413
1.200GHz	0.919 / 178.901	1.116 / 60.986	0.032 / -22.954	0.814 / 176.861
1.300GHz	0.919 / 177.835	1.036 / 58.182	0.032 / -25.254	0.815 / 176.310
1.400GHz	0.919 / 176.816	0.967 / 55.418	0.032 / -27.516	0.816 / 175.755
1.500GHz	0.920 / 175.830	0.908 / 52.686	0.032 / -29.746	0.817 / 175.192
1.600GHz	0.920 / 174.867	0.858 / 49.982	0.032 / -31.948	0.818 / 174.618
1.700GHz	0.920 / 173.917	0.813 / 47.301	0.033 / -34.128	0.819 / 174.029
1.800GHz	0.920 / 172.974	0.775 / 44.640	0.033 / -36.288	0.820 / 173.425
1.900GHz	0.920 / 172.032	0.741 / 41.996	0.033 / -38.432	0.821 / 172.802
2.000GHz	0.920 / 171.086	0.711 / 39.365	0.033 / -40.563	0.821 / 172.158
2.100GHz	0.920 / 170.130	0.685 / 36.744	0.034 / -42.685	0.821 / 171.492
2.200GHz	0.920 / 169.160	0.661 / 34.131	0.034 / -44.800	0.822 / 170.802
2.300GHz	0.919 / 168.172	0.641 / 31.522	0.035 / -46.911	0.822 / 170.086
2.400GHz	0.919 / 167.163	0.623 / 28.915	0.035 / -49.022	0.823 / 169.342
2.500GHz	0.919 / 166.127	0.607 / 26.305	0.035 / -51.135	0.823 / 168.568
2.600GHz	0.918 / 165.062	0.594 / 23.689	0.036 / -53.255	0.823 / 167.762
2.700GHz	0.918 / 163.962	0.582 / 21.064	0.037 / -55.386	0.823 / 166.921
2.800GHz	0.917 / 162.824	0.572 / 18.426	0.037 / -57.530	0.822 / 166.043
2.900GHz	0.916 / 161.642	0.564 / 15.770	0.038 / -59.694	0.821 / 165.125
3.000GHz	0.915 / 160.412	0.557 / 13.091	0.039 / -61.880	0.820 / 164.164



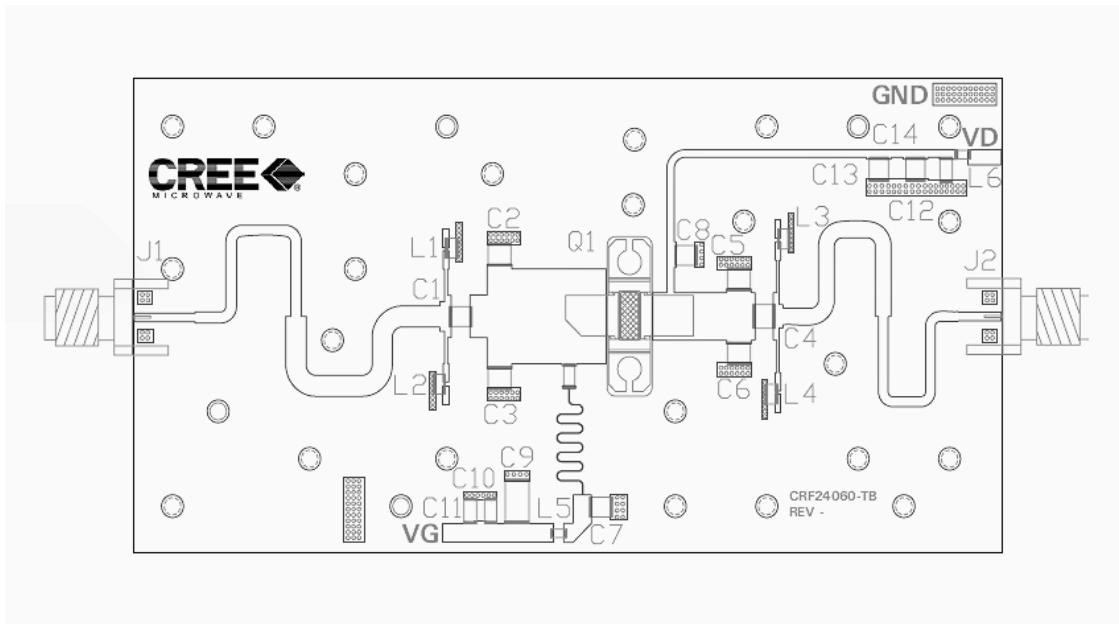
**Typical Package S-Parameters**  
**(Small Signal,  $V_{DS} = 48\text{ V}$ ,  $I_{DQ} = 1000\text{ mA}$ , magnitude / angle)**

Frequency	S(1,1)	S(2,1)	S(1,2)	S(2,2)
100.0MHz	0.927 / -116.548	11.083 / 117.528	0.033 / 28.066	0.682 / -162.593
200.0MHz	0.909 / -146.266	6.173 / 100.326	0.037 / 11.402	0.745 / -170.406
300.0MHz	0.904 / -157.893	4.209 / 91.937	0.038 / 3.552	0.760 / -173.673
400.0MHz	0.903 / -164.137	3.182 / 86.138	0.038 / -1.708	0.767 / -175.463
500.0MHz	0.903 / -168.127	2.554 / 81.430	0.038 / -5.879	0.771 / -176.632
600.0MHz	0.903 / -170.973	2.132 / 77.286	0.039 / -9.485	0.774 / -177.490
700.0MHz	0.903 / -173.162	1.829 / 73.477	0.039 / -12.756	0.777 / -178.179
800.0MHz	0.904 / -174.945	1.602 / 69.888	0.039 / -15.808	0.780 / -178.772
900.0MHz	0.905 / -176.460	1.424 / 66.455	0.039 / -18.705	0.783 / -179.309
1.000GHz	0.906 / -177.792	1.282 / 63.140	0.039 / -21.483	0.785 / -179.817
1.100GHz	0.906 / -178.998	1.167 / 59.919	0.039 / -24.169	0.788 / 179.689
1.200GHz	0.907 / 179.888	1.070 / 56.776	0.039 / -26.777	0.791 / 179.195
1.300GHz	0.908 / 178.839	0.989 / 53.699	0.039 / -29.319	0.794 / 178.696
1.400GHz	0.909 / 177.835	0.920 / 50.680	0.039 / -31.803	0.797 / 178.185
1.500GHz	0.910 / 176.863	0.861 / 47.714	0.039 / -34.236	0.800 / 177.657
1.600GHz	0.911 / 175.912	0.809 / 44.794	0.039 / -36.623	0.803 / 177.111
1.700GHz	0.912 / 174.974	0.764 / 41.917	0.039 / -38.968	0.806 / 176.543
1.800GHz	0.912 / 174.040	0.725 / 39.077	0.039 / -41.277	0.809 / 175.952
1.900GHz	0.913 / 173.105	0.690 / 36.272	0.039 / -43.551	0.811 / 175.335
2.000GHz	0.914 / 172.165	0.659 / 33.498	0.039 / -45.796	0.814 / 174.693
2.100GHz	0.914 / 171.213	0.632 / 30.751	0.040 / -48.014	0.816 / 174.023
2.200GHz	0.915 / 170.247	0.608 / 28.027	0.040 / -50.210	0.819 / 173.325
2.300GHz	0.915 / 169.262	0.587 / 25.323	0.040 / -52.387	0.821 / 172.596
2.400GHz	0.916 / 168.255	0.568 / 22.635	0.040 / -54.549	0.823 / 171.837
2.500GHz	0.916 / 167.221	0.552 / 19.959	0.041 / -56.701	0.824 / 171.046
2.600GHz	0.916 / 166.157	0.537 / 17.290	0.041 / -58.846	0.826 / 170.220
2.700GHz	0.916 / 165.058	0.525 / 14.625	0.042 / -60.988	0.827 / 169.358
2.800GHz	0.916 / 163.922	0.514 / 11.959	0.042 / -63.134	0.828 / 168.459
2.900GHz	0.916 / 162.742	0.505 / 9.286	0.043 / -65.287	0.829 / 167.519
3.000GHz	0.915 / 161.514	0.497 / 6.601	0.044 / -67.452	0.829 / 166.536

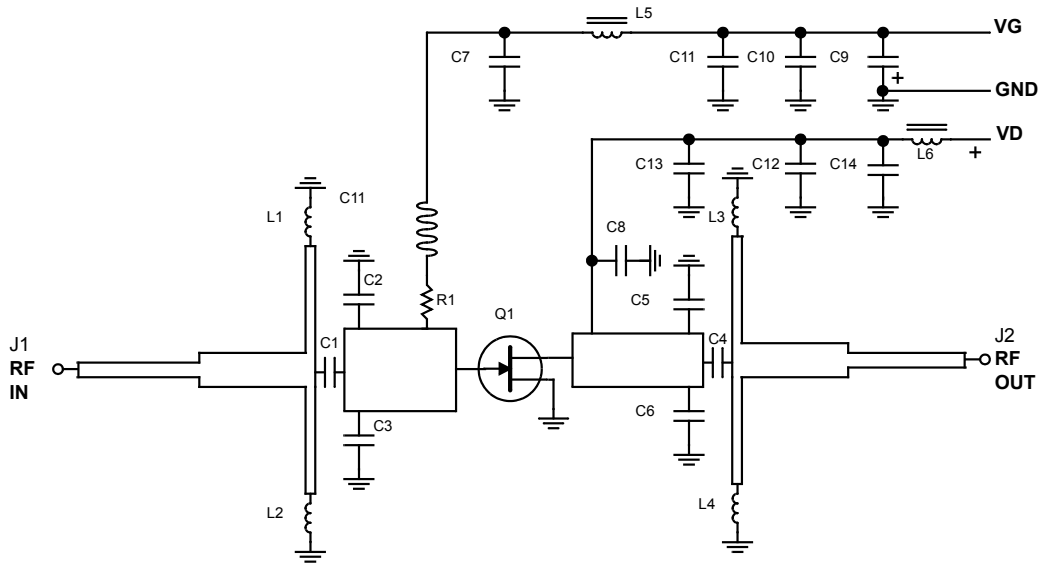
## CRF24060-TB Demonstration Test Fixture



## CRF24060-TB Demonstration Test Fixture Diagram



## CRF24060-TB Demonstration Test Fixture Schematic



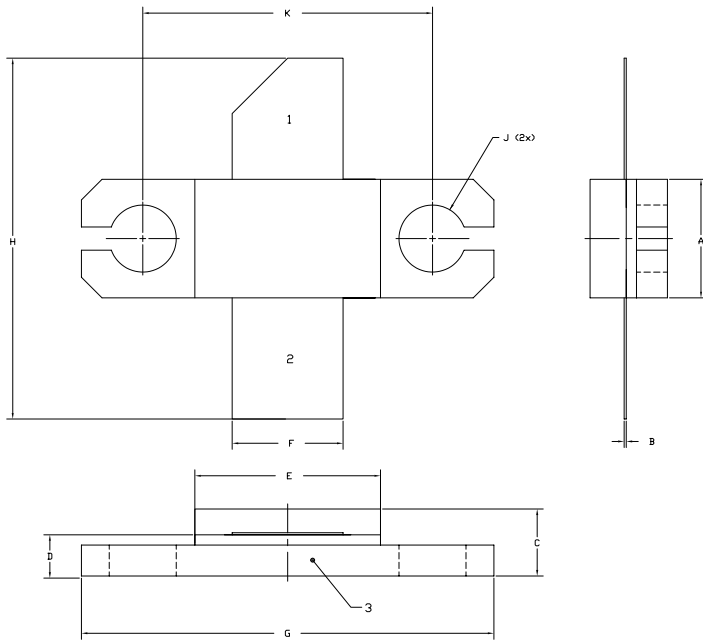
## CRF24060-TB Demonstration Test Fixture Bill of Materials

Designator	Description	Qty
C1	CAP, 10pF, DILABS C17AH, 100F, 7UXL	1
C2,C3	CAP, 3.9pF, DILABS C17AH, 3R9B, 7UXL	2
C4	CAP, 8.2pF, DILABS C17AH, 8R2A, 7UXL	1
C5,C6	CAP, 2.7pF, DILABS C17AH, 2R7A, 4UXL	2
C7,C8,C13	CAP, 30pF, DILABS C17AH, 300M, 7UXL	3
C9	CAP, 10uF, 25V, TANTALUM	1
C10,C12	CAP, 180pF, DILABS C17AH, 181J, 3UX	2
C11,C14	CAP, 0.1uF, 100V, 1206, CERAMIC	2
R1	RES, 27 OHM, 0.1W, 1206	1
L1,L2, L3,L4	MICROSPRING, 3T, COILCRAFT, 0906-3J	4
L5,L6	FERRITE, MURATA BLM21P220SG	2
J1,J2	CONNECTOR, SMA, FLANGE MOUNT, FEMALE	2
Q1	CRF24060	1

Note: Some values may differ due to substitution in the event of temporarily unavailable parts.



# Product Dimensions - CRF24060F (Package Type — 440193)



**NOTES:**

1. DIMENSIONING AND TOLERANCING PER ANSI Y14.5M, 1982.
2. CONTROLLING DIMENSION: INCH.
3. ADHESIVE FROM LID MAY EXTEND A MAXIMUM OF 0.020" BEYOND EDGE OF LID.
4. LID MAY BE MISALIGNED TO THE BODY OF THE PACKAGE BY A MAXIMUM OF 0.008" IN ANY DIRECTION.
5. ALL PLATED SURFACES ARE NI/AU

DIM	INCHES		MILLIMETERS	
	MIN	MAX	MIN	MAX
A	0.225	0.235	5.72	5.97
B	0.004	0.006	0.10	0.15
C	0.125	0.135	3.18	3.43
D	0.077	0.087	1.96	2.21
E	0.355	0.365	9.02	9.27
F	0.210	0.220	5.33	5.59
G	0.795	0.805	20.19	20.45
H	0.670	0.730	17.02	18.54
J	ø .130		3.30	
k	0.562		14.28	

- PIN 1. GATE  
 PIN 2. DRAIN  
 PIN 3. SOURCE



## Disclaimer

Specifications are subject to change without notice. Cree, Inc. believes the information contained within this data sheet to be accurate and reliable. However, no responsibility is assumed by Cree for any infringement of patents or other rights of third parties which may result from its use. No license is granted by implication or otherwise under any patent or patent rights of Cree. Cree makes no warranty, representation or guarantee regarding the suitability of its products for any particular purpose. "Typical" parameters are the average values expected by Cree in large quantities and are provided for information purposes only. These values can and do vary in different applications, and actual performance can vary over time. All operating parameters should be validated by customer's technical experts for each application. Cree products are not designed, intended, or authorized for use as components in applications intended for surgical implant into the body or to support or sustain life, in applications in which the failure of the Cree product could result in personal injury or death, or in applications for planning, construction, maintenance or direct operation of a nuclear facility. Cree and the Cree logo are registered trademarks of Cree, Inc.

For more information, please contact:

Cree, Inc.  
4600 Silicon Drive  
Durham, NC 27703  
[www.cree.com/wireless](http://www.cree.com/wireless)

Ryan Baker  
Cree, Marketing  
919.287.7816

Tom Dekker  
Cree, Sales Director  
919.313.5639