



Micro Commercial Components

Micro Commercial Components  
 20736 Marilla Street Chatsworth  
 CA 91311  
 Phone: (818) 701-4933  
 Fax: (818) 701-4939

# MC79L12BP

## Features

- Internal Short Circuit Current Limiting
- Internal Thermal Overload Protection
- No External Components Required

## Three-Terminal Low Current Negative Voltage Regulator

### Absolute Maximum Ratings

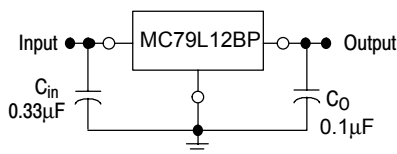
Parameter	Symbol	Value	Unit
Input Voltage	$V_1$	30	V
Operating Junction Temperature	$T_{OPR}$	-30---+75	°C
Storage Temperature Range	$T_{STG}$	-40---+125	°C

### Electrical Characteristics ( $V_i=19V, I_o=40mA, 0^\circ C < T_j < 125^\circ C, C_1=0.33\mu F, C_o=0.1\mu F$ , unless otherwise specified)

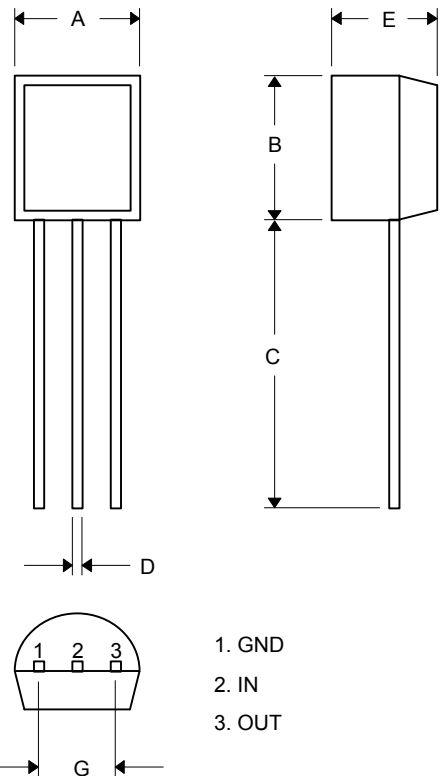
Parameter	Sym	Min	Typ	Max	Test conditions
Output Voltage	$V_o$	11.5V	12.0V	12.5V	$V_i=19V, I_o=40mA$
Load Regulation	$V_o - I_o$		16mV	100mV	$I_o=1mA-100mA, V_i=19V$
Line regulation	$V_o - V_i$		36mV	250mV	$14.5V \leq V_i \leq 27V, I_o=40mA$
Quiescent Current	$I_q$		3.5mA	6.0mA	$V_i=19V, I_o=40mA$
Output Noise Voltage	$V_N$		210 $\mu$ V		$10Hz \leq f \leq 100KHz, V_i=19V, I_o=40mA$
Ripple Rejection	RR	37dB	64dB		$15V \leq V_i \leq 25V, I_o=40mA, f=120Hz, T_j=25^\circ C, e_{IN}=1V_{P-P}$

\*Note: Bypass Capacitors are recommended for optimum stability and transient response and should be located as close as possible to the regulators

Typical Application:



### TO-92



DIM	INCHES		MM		NOTE
	MIN	MAX	MIN	MAX	
A	.175	.185	4.45	4.70	
B	.175	.185	4.46	4.70	
C	.500	---	12.7	---	
D	.016	.020	0.41	0.63	
E	.135	.145	3.43	3.68	
G	.095	.105	2.42	2.67	