

# Monolithic crystal filter

## MQF10.0-1600/04

(preliminary specification)



### Application

- 8 pol filter
- i.f.- filter
- use in mobile and stationary transceivers

### Limiting values

		Unit	Value
Nominal frequency	$f_0$	MHz	10.0
Insertion loss		dB	< 4.0
Pass band at 6.0dB		kHz	$\pm > 8$
Ripple in pass band	$f_0 \pm 6$ kHz	dB	< 1.5
Stop band attenuation	$f_0 \pm 20$ kHz	dB	> 60
	$f_0 \pm 25$ kHz	dB	> 80
Alternate attenuation		dB	> 90

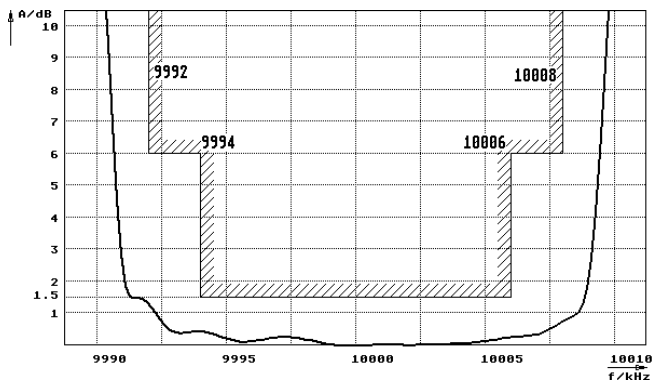
### Terminating impedance Z

R1  C1	Ohm/pF	9000    -0.5
R2  C2	Ohm/pF	9000    -0.5

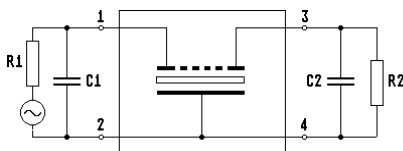
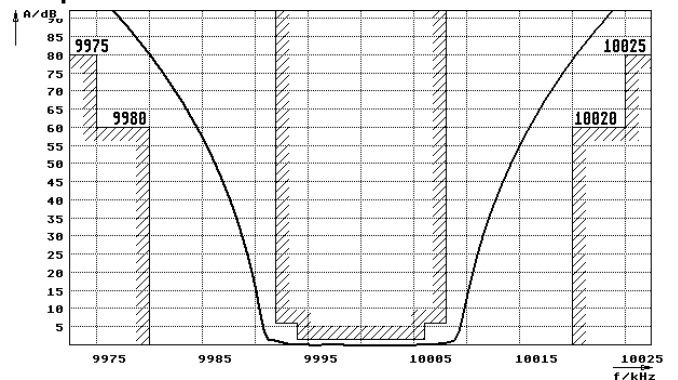
Operating temp. range	°C	-40... +70
Storage temp. range	°C	-45... +85
Environment conditions		according to CF001

### Characteristics MQF10.0-1600/04

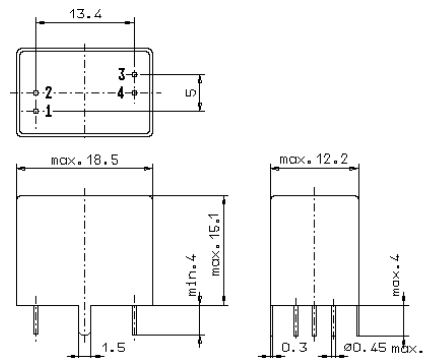
#### Pass band



#### Stop band



- Pin connections:
- 1 Input
  - 2 Ground-Input
  - 3 Output
  - 4 Ground-Output



GV5.1