

Monolithic crystal filter

MQF21.4-0750/06



Application

- 6 pol filter
- i.f.- filter
- use in mobile and stationary transceivers

Limiting values

		Unit	Value
Center frequency	f_0	MHz	21.4
Insertion loss		dB	≤ 3.0
Pass band at 3.0 dB		kHz	± 3.75
Ripple in pass band	$f_0 \pm 3.00$ kHz	dB	≤ 2.0
Stop band attenuation	$f_0 \pm 8.75$ kHz	dB	≥ 45
	$f_0 \pm 12.5$ kHz	dB	> 65
Alternate attenuation	$f_0 \pm 25...500$ kHz	dB	> 80 except spurious

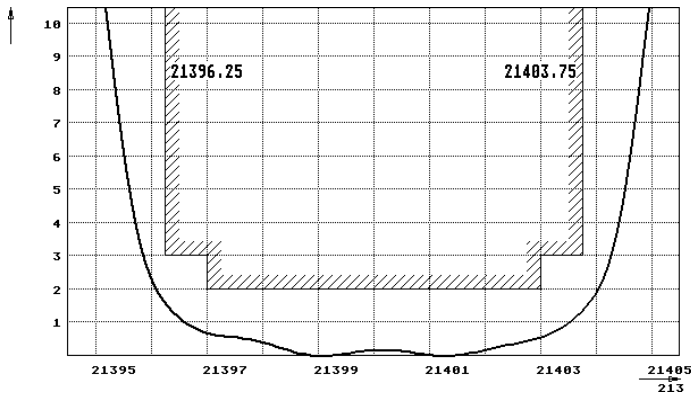
Terminating impedance Z

R1 C1	Ohm/pF	850 5
R2 C2	Ohm/pF	850 5

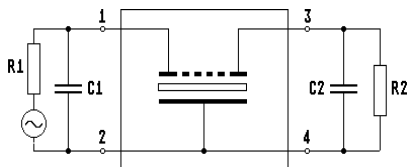
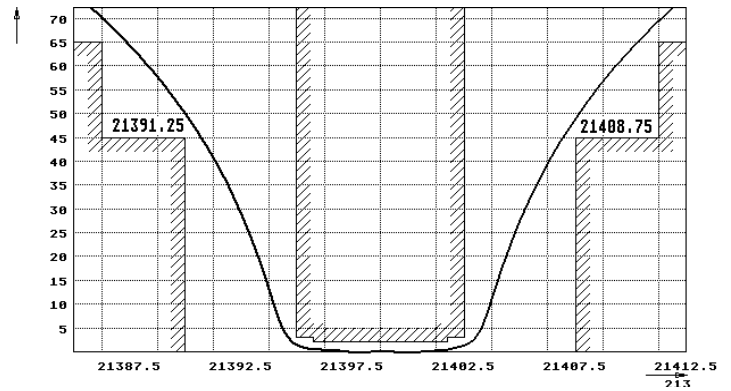
Operating temp. range	° C	-20... +70
-----------------------	-----	------------

Characteristics MQF21.4-0750/06

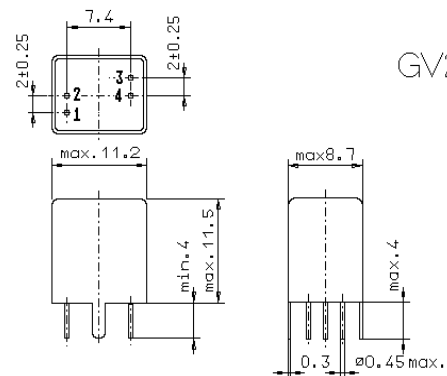
Pass band



Stop band



Pin connections: 1 Input
2 Input-E
3 Output
4 Output-E



GV2.1