

Monolithic crystal filter

MQF70.0-1500/08



Application

- 4 pol filter
- i.f.- filter
- use in mobile and stationary transceivers

Limiting values

		Unit	Value
Center frequency	f_0	MHz	70.0
Insertion loss		dB	≤ 3.0
Pass band at 3.0 dB		kHz	± 7.5
Ripple in pass band	$f_0 \pm 5.0$ kHz	dB	≤ 1.0
Stop band attenuation	$f_0 \pm 25$ kHz	dB	≥ 35
Alternate attenuation	$f_0 - 910$ kHz	dB	> 80

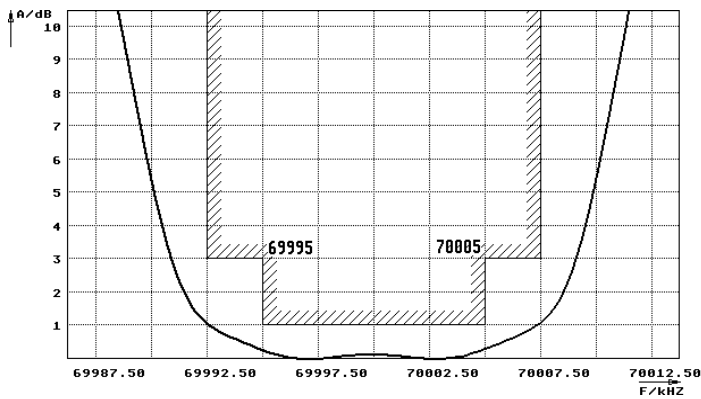
Terminating impedance Z

R1 C1		Ohm/pF	2000 -1
R2 C2		Ohm/pF	2000 -1
Coupling capacitance	Ck	pF	-1

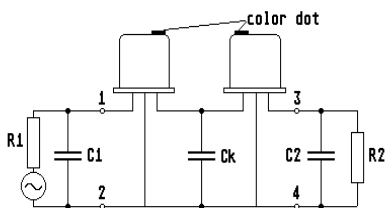
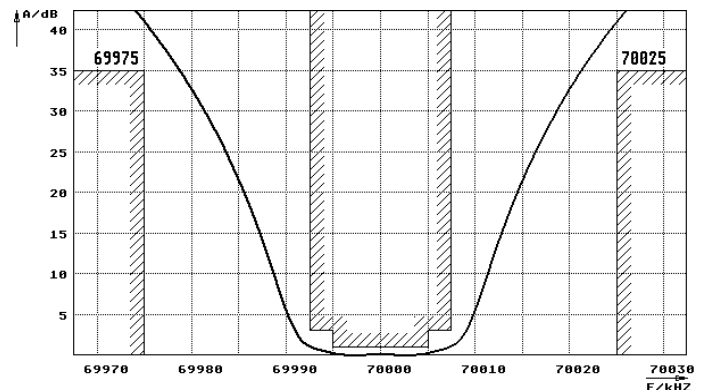
Operating temp. range		°C	-20... +70
-----------------------	--	----	------------

Characteristics MQF70.0-1500/08

Pass band



Stop band



Pin connections: 1 Input
2 Input-E
3 Output
4 Output-E

