

Monolithic crystal filter

MQF9.0-0240/07



Application

- 8 pol filter
- i.f.- filter
- use in mobile and stationary transceivers

Limiting values

		Unit	Value
Centre frequency	f_c	MHz	9.0 ± 200 Hz
Insertion loss		dB	≤ 5.5
Pass band at 6.0 dB		kHz	± 1.2
Ripple in pass band	$f_c \pm 0.8$ kHz	dB	≤ 2.0
Stop band attenuation	$f_c \pm 2.5$ kHz	dB	≥ 60
	$f_c \pm 3.2$ kHz	dB	> 80
Shape factor	60:6		1.9
	80:6		2.5

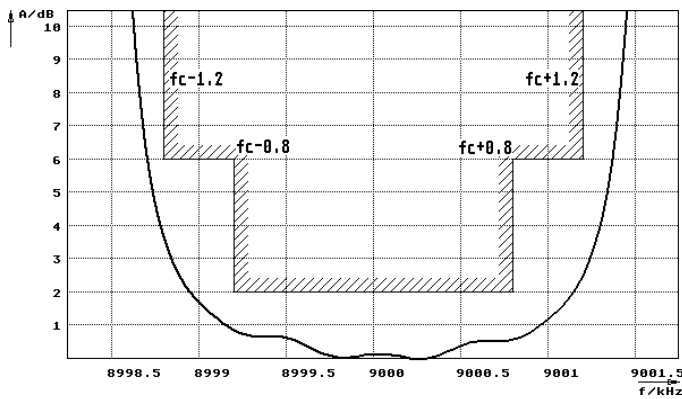
Terminating impedance Z

R1 C1	Ohm/pF	500 30
R2 C2	Ohm/pF	500 30

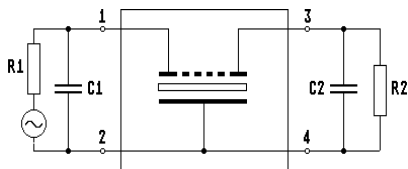
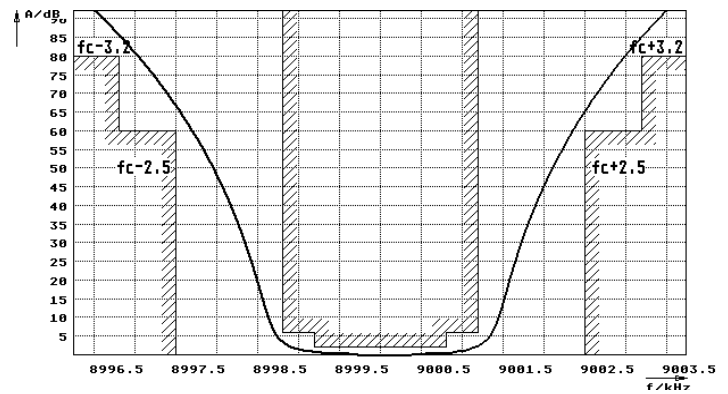
Operating temp. range	°C	-20... +70
-----------------------	----	------------

Characteristics MQF9.0-0240/07

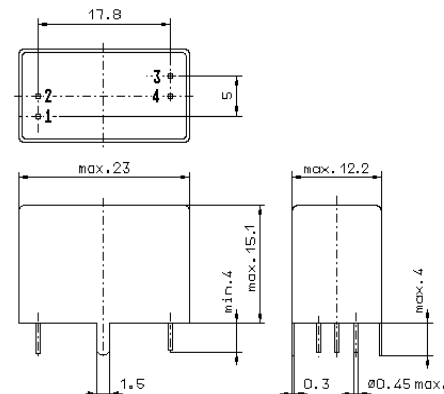
Pass band



Stop band



Pin connections: 1 Input
2 Input-E
3 Output
4 Output-E



GV6.2