

Coaxial Low Pass Filter

DC to 1050 MHz (40 dB Isolation up to 20 GHz)

NEW!
VLFX-1050

Maximum Ratings

Operating Temperature -55°C to 100°C

Storage Temperature -55°C to 100°C

RF Power Input* 10W max. at 25°C

*Passband rating, derate linearly to 3.5W at 100°C ambient.

Features

- very good isolation, 40 dB up to 20 GHz
- 21 sections
- temperature stable LTCC internal structure
- patent pending
- re-entry frequency > 20 GHz
- rugged stainless steel unibody

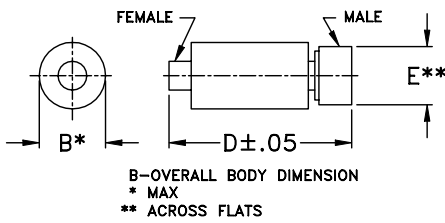


CASE STYLE: FF1118
PRICE: \$ 39.95 ea. QTY (1-9)

Applications

- harmonic rejection
- transmitters/receivers
- lab use
- test instrumentation

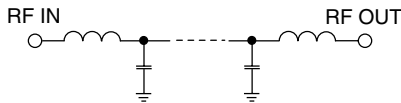
Outline Drawing



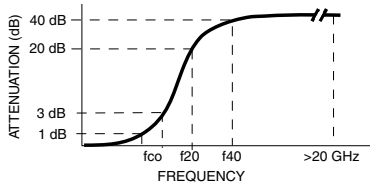
Outline Dimensions (inch/mm)

| B | D | E | wt. |
|------|-------|------|-------|
| .39 | 2.67 | .312 | grams |
| 9.91 | 67.82 | 7.92 | 17.0 |

Functional Schematic



Typical Frequency Response



Low Pass Filter Electrical Specifications @ 25°C

| MODEL NO. | PASSBAND (MHz) (Loss < 1.2dB) Max. | fco, MHz Nom (Loss 3 dB) Typ | STOPBAND (MHz) (Loss, dB) | | VSWR (:1) | | NO. OF SECTIONS |
|-----------|--|---------------------------------------|------------------------------|-------------|------------------|------------------|-----------------|
| | | | f20 Min. | f40 Typ. | Stopband Typ. | Passband Typ. | |
| VLFX-1050 | DC-1050 | 1675 | 1990 | 2275-20000 | 10 | 1.4 | 21 |

Typical Performance Data @ 25°C

| Frequency (MHz) | Insertion Loss (dB) | VSWR (:1) |
|-----------------|---------------------|-----------|
| 50 | 0.21 | 1.04 |
| 400 | 0.41 | 1.03 |
| 750 | 0.73 | 1.18 |
| 1050 | 1.00 | 1.38 |
| 1200 | 1.21 | 1.40 |
| 1450 | 1.58 | 1.17 |
| 1650 | 3.01 | 1.54 |
| 1750 | 6.88 | 3.26 |
| 1850 | 15.92 | 6.97 |
| 1900 | 22.14 | 8.92 |
| 2000 | 38.42 | 11.96 |
| 4000 | 87.87 | 40.57 |
| 6000 | 79.32 | 59.00 |
| 8000 | 79.32 | 59.00 |
| 10000 | 78.90 | 45.17 |
| 12000 | 47.80 | 3.99 |
| 14000 | 50.11 | 16.18 |
| 16000 | 83.95 | 31.61 |
| 18000 | 71.89 | 4.18 |
| 20000 | 69.48 | 8.16 |

