

# Coaxial Attenuator/Switch

50Ω Bi-Phase 1 to 200 MHz

## ZAS-3



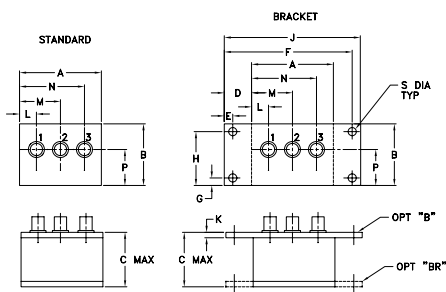
### Maximum Ratings

Operating Temperature	-55°C to 100°C
Storage Temperature	-55°C to 100°C
Control Current	30mA

### Coaxial Connections

INPUT	3
OUTPUT	1
CONTROL	2

### Outline Drawing



### Outline Dimensions (inch/mm)

A	B	C	D	E	F	G	H
2.25	1.38	1.24	.50	.150	3.100	.138	1.238
57.15	35.05	31.50	12.70	3.81	78.74	3.51	31.45
J	K	L	M	N	P	S	wt
3.25	.10	.40	1.15	1.86	.64	.150	grams
82.55	2.54	10.16	29.21	47.24	16.26	3.81	74.0

### Features

- wideband, 1 to 200 MHz
- rugged shielded case
- excellent phase and amplitude unbalance
- low insertion loss, 1.6 dB typ.

### Applications

- bi-phase modulator
- electronic attenuator

CASE STYLE: M22

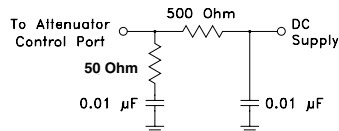
Connectors	Model	Price	Qty.
BNC	ZAS-3	\$59.95	(1-9)
BRACKET (OPTION "B")		\$5.00	(1+)
BRACKET (OPTION "BR")		\$1.50	(1+)

### Attenuator/Switch Electrical Specifications

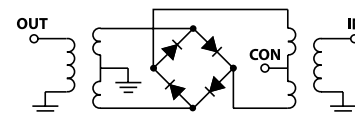
FREQUENCY (MHz)	INSERTION LOSS (dB) ±20 mA	MAX. INPUT PWR (dBm) ±20mA	IN-OUT ISOLATION (dB) 0 mA			BI-PHASE X (±20 mA) Typ.	
			L	M	U	Δ AMP (dB)	Phase (deg.) deviation from 180°
1-200	DC-0.05	15 30	65 50	50 40	50 35	0.10 0.1	0.5 1.0

L = low range [ $f_L$  to  $10 f_L$ ] M = mid range [ $10 f_L$  to  $f_U/2$ ] U = upper range [ $f_U/2$  to  $f_U$ ] m = [  $2 f_L$  to  $f_U/2$  ]  
Performance specifications apply for input power up to 10 dB below stated 1 dB compression.

### suggested control port biasing configuration

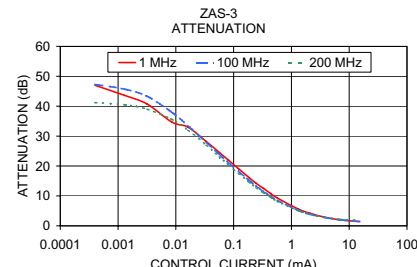
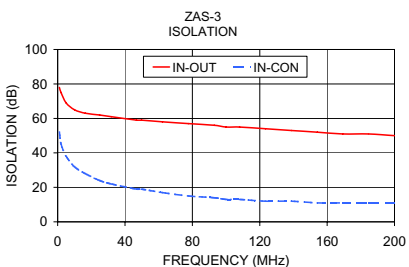
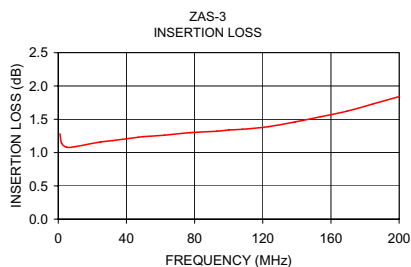


### electrical schematic



### Typical Performance Data

Freq. (MHz)	I. Loss (dB) at 20mA	±Control Δ AMP (dB)	20mA Δ Phase (deg.)	Isolation (dB) (in-out)	Input R. Loss (dB)	Control Current (mA)	Attenuation (dB)			Phase Δ ref at 15mA Ctrl			Input VSWR				
							1 MHz	100 MHz	200 MHz	1 MHz	100 MHz	200 MHz	1 MHz	100 MHz	200 MHz		
1.0	1.28	0.002	0.01	180.0	78	52	23.5	0.0000	50.3	47.8	41.7	26.3	69.1	69.7	13.6	11.6	8.1
2.0	1.14	0.002	0.01	180.0	75	45	28.1	0.0004	47.0	47.3	41.2	19.0	65.6	65.4	13.5	11.6	8.0
5.0	1.08	0.002	0.01	180.0	69	38	35.4	0.0013	43.6	45.7	40.5	10.3	50.0	58.2	13.3	11.5	8.0
10.0	1.09	0.002	0.01	180.0	65	32	43.0	0.0032	40.7	43.3	39.0	5.7	36.8	46.4	12.9	11.3	7.9
16.4	1.12	0.002	0.01	179.9	63	28	42.7	0.0085	34.7	38.0	35.6	6.3	20.9	29.7	12.5	10.9	7.7
24.9	1.16	0.002	0.01	179.9	62	24	37.5	0.0162	33.0	33.5	32.0	6.6	12.3	19.1	11.7	10.3	7.4
31.8	1.18	0.002	0.01	179.9	61	22	35.2	0.0336	28.2	27.9	27.0	7.2	7.0	10.3	10.5	9.2	6.8
46.8	1.23	0.001	0.02	179.8	59	19	31.6	0.0567	24.5	23.9	23.1	7.5	4.7	6.0	9.3	8.1	6.1
49.8	1.24	0.001	0.02	179.8	59	19	31.0	0.0807	22.0	21.2	20.5	7.7	3.9	4.3	8.3	7.3	5.6
62.2	1.26	0.002	0.02	179.8	58	17	28.7	0.1215	19.1	18.2	17.5	7.5	3.0	2.9	7.1	6.2	4.9
77.6	1.30	0.001	0.02	179.7	57	15	26.4	0.1860	16.1	15.2	14.6	7.1	2.4	1.8	5.8	5.1	4.2
93.0	1.32	0.001	0.02	179.6	56	14	24.4	0.2459	14.2	13.3	12.8	6.5	2.1	1.4	5.0	4.5	3.7
100.0	1.34	0.001	0.02	179.6	55	13	23.5	0.3285	12.5	11.5	11.1	6.3	1.8	1.1	4.3	3.8	3.2
108.0	1.35	0.001	0.02	179.6	55	13	22.6	0.4365	10.8	9.9	9.6	5.7	1.6	0.9	3.6	3.3	2.8
123.4	1.39	0.001	0.02	179.5	54	12	21.0	0.5714	9.3	8.5	8.2	5.1	1.4	0.7	3.1	2.8	2.5
138.8	1.46	0.001	0.02	179.5	53	12	19.5	1.3114	5.6	5.2	5.1	3.3	0.8	0.3	2.0	1.9	1.7
154.2	1.54	0.001	0.02	179.4	52	11	18.2	2.0989	4.2	3.9	3.9	2.3	0.6	0.3	1.6	1.6	1.5
169.2	1.62	0.001	0.02	179.5	51	11	17.0	3.7220	2.9	2.8	2.9	1.3	0.3	0.1	1.3	1.3	1.3
184.6	1.73	0.001	0.02	179.5	51	11	15.9	7.0357	2.0	2.0	2.2	0.5	0.2	0.0	1.2	1.2	1.2
200.0	1.84	0.002	0.03	179.6	50	11	14.8	15.1415	1.4	1.5	1.8	0.0	0.0	0.0	1.1	1.1	1.1



P.O. Box 350166, Brooklyn, New York 11235-0003 (718) 934-4500 Fax (718) 332-4661 For detailed performance specs & shopping online see Mini-Circuits web site



The Design Engineers Search Engine Provides ACTUAL Data Instantly From MINI-CIRCUITS At: [www.minicircuits.com](http://www.minicircuits.com)

RF/IF MICROWAVE COMPONENTS

REV. OR  
M96904  
ZAS-3  
WP/TD/CP  
070319