

## 1490 nm DFB LASER DIODE MODULE

## DL-5300-1490 Series

UNCOOLED MQW DFB LD WITH PIGTAIL

### FEATURES

- 2 1490 nm Uncooled Laser Diode with MQW Structure
- 2 High Reliability, Long Operation Life
- 2 Single Frequency Operation with High SMSR
- 2 0 to 70°C operation without active cooling
- 2 Build-in InGaAs monitor

### APPLICATION

Trunk Line, OTDR

### DESCRIPTION

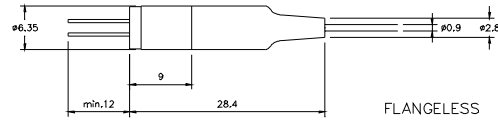
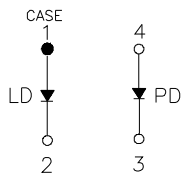
DL-5300-1490 series are designed for coupling a single mode optical fiber with 1490 nm MQW DFB uncooled laser diode. These modules are ideally suitable for long reach and intermediate reach OC-3, OC-12, and Gigabit Ethernet transmission application.

ELECTRICAL AND OPTICAL CHARACTERISTICS (T <sub>C</sub> =25 °C)						
Symbol	Parameter	Test Conditions	Min.	Typ.	Max.	Unit
I <sub>th</sub>	Threshold Current	CW		10	15	mA
V <sub>OP</sub>	Operating Voltage	CW, I <sub>F</sub> = I <sub>th</sub> +20mA		1.2	1.5	V
P <sub>f</sub>	Optical Output Power Part No: DL-532X-1490 DL-533X-1490	CW, I <sub>F</sub> = I <sub>th</sub> +20mA	1.0 2.0			mW
λ <sub>c</sub>	Center Wavelength	CW, P <sub>o</sub> = P <sub>f</sub>	1483	1490	1495	nm
SMSR	Side Mode Suppression Ratio	CW, I <sub>th</sub> +20mA	30	35		dB
t <sub>r</sub> , t <sub>f</sub>	Rise And Fall Times	I <sub>F</sub> =I <sub>th</sub> , I <sub>th</sub> +20mA, 20~ 80%			0.226	ns
ΔP <sub>f</sub> / P <sub>f</sub>	Tracking Error	APC, 0~+70 °C	-	-	±1.5	dB
I <sub>m</sub>	PD Monitor Current	CW, I <sub>th</sub> +20mA, V <sub>RD</sub> =1V	100		1500	μA
I <sub>D</sub>	PD Dark Current	V <sub>RD</sub> =5V			0.1	μA
C <sub>t</sub>	PD Capacitance	V <sub>RD</sub> =5V, f=1MHz		10	15	pF

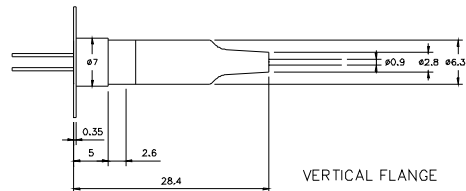
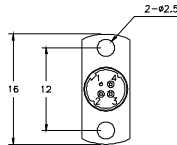
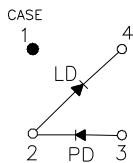
ABSOLUTE MAXIMUM RATINGS (T <sub>C</sub> =25 °C)			
Symbol	Parameter	Ratings	Unit
P <sub>o</sub>	Optical Output Power (532X/533X)	1.5/3	mW
V <sub>RL</sub>	LD Reverse Voltage	2	V
V <sub>RD</sub>	PD Reverse Voltage	10	V
I <sub>FD</sub>	PD Forward Current	1.0	mA
T <sub>opr</sub>	Operating Temperature	0 to 70	°C
T <sub>stg</sub>	Storage Temperature	-40~+85	°C

MECHANICAL DIMENSION (mm) and PIN ASSIGNMENT

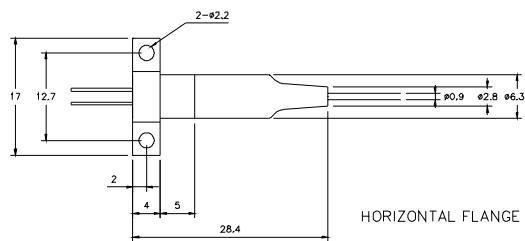
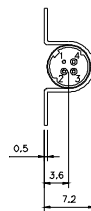
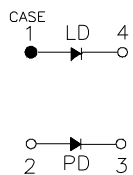
## Type A



## Type B



## Type C



Note: Specifications subject to change without notice.

## ORDER INFORMATION

Part No.: D L - 5 3    - 1 4 9 0 -

Code	Pout (mw)
2	1
3	2

Code	Pin Assignment
0	Type A
5	Type B
8	Type C

Code	Speed
Blank	1.25 Gbps
S	2.5 Gbps

Code	Flange
V	Vertical
H	Horizontal
X	No Flange

Code	Connector
S	SC/PC
F	FC/PC
T	ST/PC
X	No connector
SA	SC/APC
FA	FC/APC
TA	ST/APC

Code	Isolator
Blank	No
S	Single-Stage