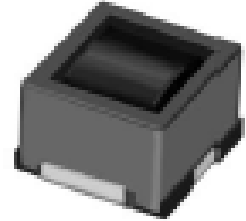
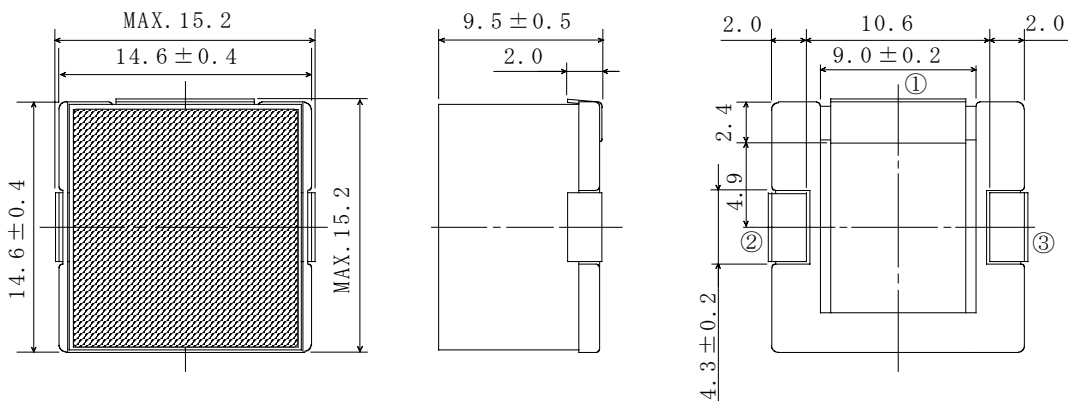
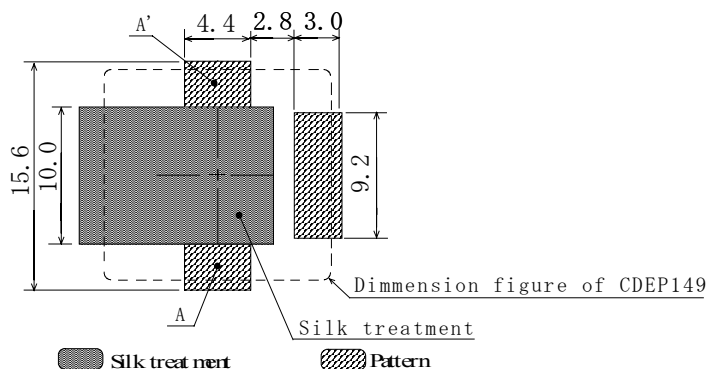
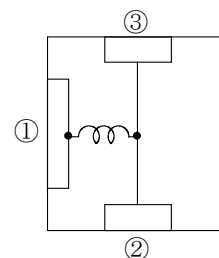


**Type: CDEP149**
**◆ Product Description**

- 15.2×15.0mm Max. (L×W), 10.0mm Max. height
- Inductance Range : 0.75~3.0 μH(Standard type) :  
0.45~1.8 μH(High Power type)
- Saturation Current range: 12.4~24.0A(Standard type) ;  
20.0~32.0A (High Power type).
- Temperature rise current range: 28.0~35.0A
- In addition to the standards versions shown here, custom inductors are also available to meet your exact requirements.


**◆ Feature**

- Super high current inductors.
- Mn-Zn core used, Flat wire used.
- Ideally used in portable computer CPU power supply.
- RoHS Compliance

**◆ Dimensions (mm)**

**◆ Land Pattern (mm)**

**◆ Schematics (Bottom)**


**Type: CDEP149**
**◆ Specification**
**1. Standard Type**

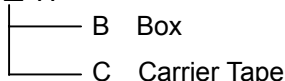
Part Name ※	Stamp	Inductance [Within] 100kHz/1V	D.C.R. (mΩ) Max.(Typ.) (at 20°C)	Saturation Current (A) ※1	Temperature Rise current (A) ※2
CDEP149NP-ØR7N□	0R7N	0.75 μH ± 30%	1.1(0.9)	24.0	35.0
CDEP149NP-1R7M□	1R7M	1.7 μH ± 20%	1.6(1.3)	16.8	30.0
CDEP149NP-3R0M□	3R0M	3.0 μH ± 20%	2.3(1.9)	12.4	28.0

**2. High Power Type**

Part Name ※	Stamp	Inductance [Within] 100kHz/1V	D.C.R.(mΩ) Max.(Typ.) (at 20°C)	Saturation Current (A) ※1	Temperature Rise current (A) ※2
CDEP149NP-ØR4N□-H	0R4N	0.45 μH ± 30%	1.1(0.9)	32.0	35.0
CDEP149NP-1R0M□-H	1R0M	1.0 μH ± 20%	1.6(1.3)	26.0	30.0
CDEP149NP-1R8M□-H	1R8M	1.8 μH ± 20%	2.3(1.9)	20.0	28.0

**※ Description of part name**

CDEP149NP- ØR7N□-H



※1 Saturation current: The DC current at which the inductance decreases to 65% (for the inductance tolerance : ± 30%) or 75% (for the inductance tolerance: ± 20%) of it's nominal.

※2 Temperature rise current: The DC current at which the temperature rise is Δt=40°C. (Ta=20°C)