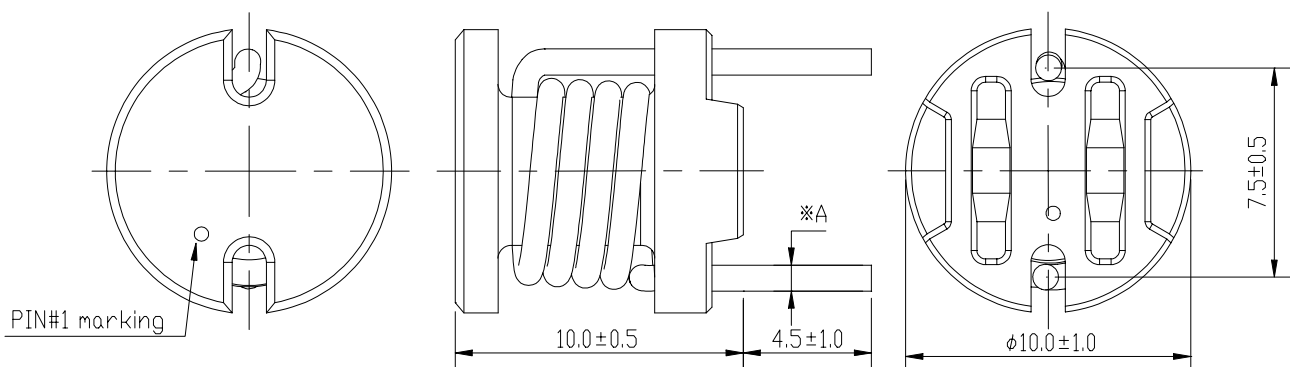


Type: RCH110C
◆ Product Description

- 11.0mm Max. ϕ , 10.5mm Max. Height.
- Inductance Range: 0.9~8.2 μ H
- Rated current range: 5.8~12.0A
- In addition to the standard versions of inductors shown here, custom inductors are available to meet your exact requirements.


◆ Feature

- Magnetically unshielded construction.
- Ideally Used in Printers, LCD TV, DVD, Printer, Copy Machine, Mainboard of the compounding machines, etc as power supplies's Inductors or DC-DC Converter inductors.
- RoHS Compliance

◆ Dimensions (mm)


※A Dimension refer to the specification

Type: RCH110C
◆ Specification

Part Name	Stamp	Inductance (μ H) [Within] 100kHz/1V	D.C.R.(m Ω) Max.(Typ.) (at 20°C)	Saturation Current (A)※1		Temperature Rise Current (A)※2	Pin (mm)
				at 20°C	at 105°C		
RCH110CNP-0R9M	0R9M	0.9 \pm 20%	3.73(2.98)	19.0	16.0	12	0.9 \pm 0.1
RCH110CNP-1R5M	1R5M	1.5 \pm 20%	4.80(3.84)	18.0	14.0	10	0.85 \pm 0.1
RCH110CNP-1R8M	1R8M	1.8 \pm 20%	5.75(4.57)	16.5	12.5	9.8	0.85 \pm 0.1
RCH110CNP-2R2M	2R2M	2.2 \pm 20%	6.62(5.29)	14.4	11.0	9.4	0.85 \pm 0.1
RCH110CNP-3R3M	3R3M	3.3 \pm 20%	7.57(6.05)	12.8	10.4	9.0	0.85 \pm 0.1
RCH110CNP-3R9M	3R9M	3.9 \pm 20%	11.66(9.33)	11.2	8.80	7.0	0.7 \pm 0.1
RCH110CNP-4R7M	4R7M	4.7 \pm 20%	12.95(10.35)	10.4	8.00	6.5	0.7 \pm 0.1
RCH110CNP-5R6M	5R6M	5.6 \pm 20%	14.05(11.24)	9.20	7.60	6.2	0.7 \pm 0.1
RCH110CNP-6R8M	6R8M	6.8 \pm 20%	15.36(12.29)	8.80	6.80	6.1	0.7 \pm 0.1
RCH110CNP-7R5M	7R5M	7.5 \pm 20%	16.90(13.52)	8.00	6.40	6.0	0.7 \pm 0.1
RCH110CNP-8R2M	8R2M	8.2 \pm 20%	18.51(14.81)	7.20	6.00	5.8	0.7 \pm 0.1

※1 Saturation current: The DC current at which the inductance decreases to 90% of its initial value.

※2: Temperature rise current: The DC current at which the temperature rise is $\Delta t=40^{\circ}\text{C}$. ($T_a=20^{\circ}\text{C}$).