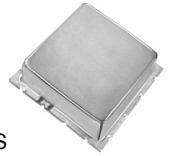


VOLTAGE CONTROLLED OSCILLATORS



165S

CERAMIC COAXIAL RESONATOR

FREQUENCY RANGE (MHz)	NOMINAL TUNING VOLTAGE (Volts)	DC BIAS REQUIREMENTS		OUTPUT POWER		AVERAGE TUNING SENSITIVITY MHz/Volt	TYPICAL PHASE NOISE dBc/Hz Offset at 10 KHz/100 KHz	TYPICAL HARMONIC SUPPRESSION (dBc)	PUSHING (MHz/Volt) (Typ)	PULLING (@ 1.75:1 VSWR) MHz (Typ)	PACKAGE	MODEL
		VOLTAGE (Volts)	CURRENT (mA)	dBm	ToI. (dB)							
284-319	2 - 12	+12	<40	+7	+3	4 - 10	-125/-150	10	2	2	165S	CFO284SA*
681-716	1 - 8	+8	<40	+4	+2	4 - 6	-115/-135	10	1	5	165S	CFO-S-698*
1079-1114	1 - 8	+8	<40	+5	+3	6 - 10	-115/-135	15	5	15	165S	CFO1079SA*
1719-1791	1 - 8	+8	<40	+6	+3	10 - 14	-105/-130	10	2	5	165	CFO1719PA*
1719-1791	1 - 8	+8	<40	+6	+3	10 - 14	-105/-130	10	2	5	165S	CFO1719SA*
1785-1842	2 - 10	+12	<40	+6	+3	8 - 12	-105/-130	10	2	5	165	CFO1785PA*
1785-1842	2 - 10	+12	<40	+6	+3	8 - 12	-105/-130	10	2	5	165S	CFO1785SA*
2300-2320	1 - 10	+10	<40	+6	+2	8 - 12	-110/-135	12	2	5	165S	CFO2300SA*

Note: *0.440 inches, maximum cover height

COMMON SPECIFICATIONS

- Output Impedance: 50 ohms
- VSWR: 1.5:1 (Typ)
- Operating Temperature: -20°C to +70°C
- Contact the factory for more stringent operating temperature range

For pin location and package outline drawings, see back pages.

Performance Plot

