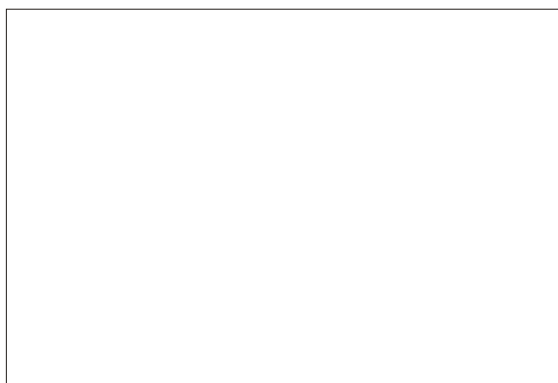
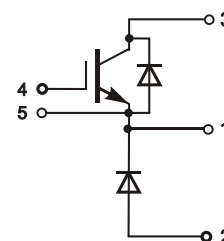
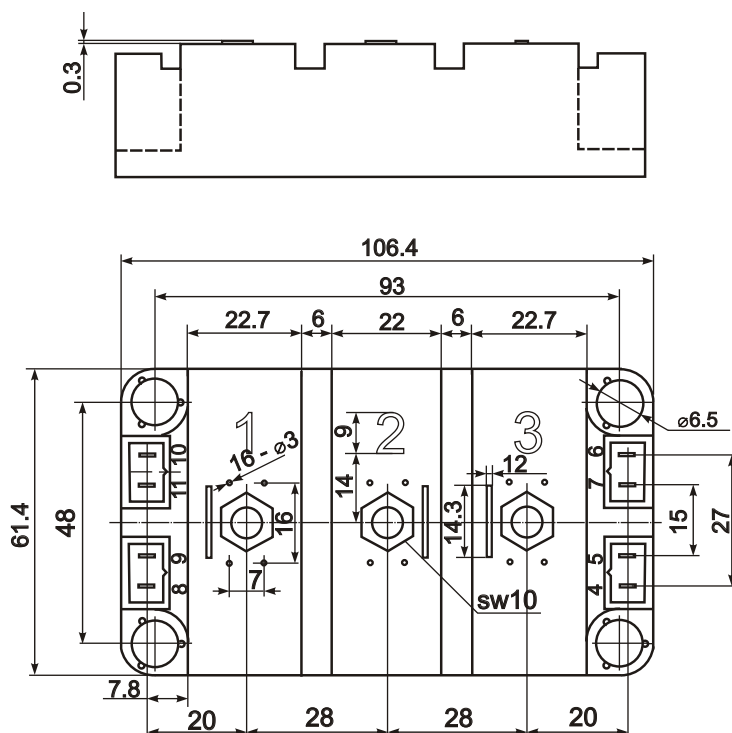


NPN IGBT Buck-Chopper Module



| Type | V_{CES} | I_C | I_{CM} | $V_{CE(sat)}$ | $t_{d(on)}$ | $t_{d(off)}$ | t_f | T_{Jmax} | V_{isol} | R_{thJC} |
|--------------|-----------|-------|----------|---------------|-------------|--------------|-------|------------|------------|------------|
| | V | A | A | V | ns | ns | ns | °C | V | K/W |
| SMPL-300S-12 | 1200 | 265 | 530 | 1.9 | 170 | 660 | 60 | 150 | 4000 | 0.085 |



Features:

- Industrial standard package
- Heat transfer through aluminium nitride ceramic isolated metal baseplate
- Precise internal pressure contacts for high reliability
- 4000V RMS isolation voltage

Typical Applications:

- DC motor control
- AC motor soft starter
- Temperature control (e.g. for ovens, chemical processes)
- Lighting control