

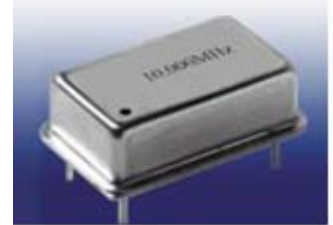
# ACT SPXO 08/14

## FEATURES

- Wide Frequency Range up to 160MHz
- Frequency Stability  $\pm 5$ PPM
- High Reliability, Second Package
- TTL, HCMOS, AC MOS

## APPLICATIONS

- High Precision / Reliability Designs
- Communication Equipment



## SPECIFICATIONS

Frequency Range  
Output

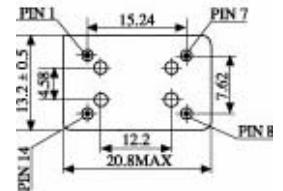
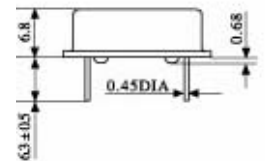
1~160MHz  
Waveform: TTL, HCMOS, AC MOS  
Voltage: VOH, 4.4V (min.)  
VOL, 0.4V (max.)  
Duty cycle: 40/60% (max.)  
Rise/fall time: <20MHz max. 10ns  
<80MHz max. 6ns  
>80MHz max. 3ns

Frequency Stability  
Supply Voltage  
Supply Current

See Table 1  
+3.3VDC, +5.0VDC,  $\pm 5\%$   
<50MHz, 25mA (max.)  
<90MHz, 50mA (max.)  
<125MHz, 60mA (max.)

Temperature Range  
Package  
Package Option

See Table 1  
DIP14 ( See note below )  
Also available as 8 Pin DIL package.  
(12.5  $\pm$ 0.5 x 12.5  $\pm$ 0.5 x 8.3mm)  
Pin centers 7.62mm  
(Pin 1 = NC / Pin 2 = GND / Pin 3 = Output / Pin 4 = VCC)



(Unit: mm)

**PIN FUNCTION:**  
(14 Pin DIL)  
PIN1 – Enable  
PIN7 – GND/Case  
PIN8 – Output  
PIN14 – Power Supply

## SPECIFICATION AVAILABILITY

| Description               |                                       | 14 pin Rectangular |             |                     | 8 Pin Square |  |
|---------------------------|---------------------------------------|--------------------|-------------|---------------------|--------------|--|
| Frequency Generation Mode | Divide by 8                           | Divide by 4        | Divide by 2 | Fundamental         | 3rd Overtone |  |
| Frequency Deviation       | $\pm 5$ PPM                           | $\pm 10$ PPM       |             | $\pm 25$ PPM        | $\pm 30$ PPM |  |
| Temperature Range         | 0~+70°C                               | -10~+60°C          |             | -20~+70°C           | -40~+85°C    |  |
| Input Voltage             | +3.3VDC $\pm 5\%$ , +5.0VDC $\pm 5\%$ |                    |             | +3.3VDC $\pm 5\%$   |              |  |
| Output Load               | 10TTL                                 |                    | CMOS 15Pf   |                     | TTL / CMOS   |  |
| Duty Cycle                | 45%~55%                               |                    |             | 40%~60%             |              |  |
| Output Control            | Tri-state Output                      |                    |             | No Tri-state option |              |  |
| Package Type              | Second-package                        |                    |             |                     |              |  |

Please note that all parameters can not necessarily be specified in one device.

Customer to specify : Frequency, Output, Voltage, Stability, Output Type, Duty Cycle, Mode and Operating Temperature

In line with our ongoing policy of product improvement and evolution the above specification may be subject to change without notice

**IS9001:2000 Registered – Registration number 6830/2**

For quotations or further information, please contact us at :

3 The Business Centre, Molly Millars Lane, Wokingham , Berkshire, RG41 2EY UK

<http://www.actcrystals.com>

Issue: 2 S8

Date : 17/08/04