



SAW Components

Data Sheet M 4952 M





SAW Components

M 4952 M

Vestigial Sideband Filter

45,75 MHz

Data Sheet

Standard

Plastic package **SIP5K**

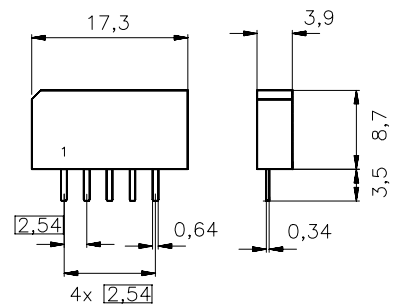
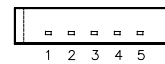
- M/N

Features

- IF filter for cable converters
- Full transmission of vestigial sideband and sound carrier
- Constant group delay

Terminals

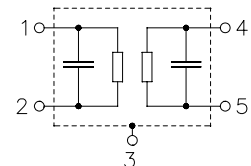
- Tinned CuFe alloy



Dimensions in mm, approx. weight 1,0 g

Pin configuration

- 1 Input
- 2 Input - ground
- 3 Chip carrier - ground
- 4 Output
- 5 Output



Type	Ordering code	Marking and package according to	Packing according to
M 4952 M	B39458-M4952-M100	C61157-A1-A15	F61074-V8067-Z000

Maximum ratings

Operable temperature range	T_A	-25/+65	°C	
Storage temperature range	T_{stg}	-40/+85	°C	
DC voltage	V_{DC}	5	V	between any terminals
AC voltage	V_{pp}	10	V	between any terminals


SAW Components
M 4952 M
Vestigial Sideband Filter
45,75 MHz
Data Sheet
Characteristics

Reference temperature: $T_A = 25 (45) \text{ }^\circ\text{C}$
 Terminating source impedance: $Z_S = 50 \text{ } \Omega$
 Terminating load impedance: $Z_L = 2 \text{ k}\Omega \parallel 3 \text{ pF}$

		min.	typ.	max.	
Insertion attenuation					
	α				
Reference level for the following data	43,56 (43,50) MHz	13,3	14,8	16,3	dB
Relative attenuation					
	α_{rel}				
Picture carrier	45,81 (45,75) MHz	-1,1	-0,1	0,9	dB
	46,56 (46,50) MHz	4,2	5,7	7,2	dB
Color carrier	42,23 (42,17) MHz	-0,9	0,1	1,1	dB
Sound carrier	41,31 (41,25) MHz	-1,4	-0,4	0,6	dB
Adjacent picture carrier	39,81 (39,75) MHz	36,0	53,0	—	dB
Adjacent sound carrier	47,31 (47,25) MHz	30,0	35,0	—	dB
	51,31 (51,25) MHz	40,0	54,0	—	dB
Lower sidelobe					
	35,06 ... 39,81 (35,00 ... 39,75) MHz	35,0	41,0	—	dB
Upper sidelobe					
	47,91 ... 55,06 (47,85 ... 55,00) MHz	38,0	45,0	—	dB
Reflected wave signal suppression					
	1,2 μs ... 6,0 μs after main pulse (test pulse 250 ns, carrier frequency 43,56 MHz)	42,0	54,0	—	dB
Feedthrough signal suppression					
	1,2 μs ... 1,1 μs before main pulse (test pulse 250 ns, carrier frequency 43,56 MHz)	50,0	56,0	—	dB
Group delay ripple (p-p)					
	$\Delta\tau$				
	40,56 ... 46,56 (40,50 ... 46,50) MHz	—	50	—	ns
Impedance at 43,56 MHz					
	Input: $Z_{IN} = R_{IN} \parallel C_{IN}$	—	1,4 \parallel 12,7	—	k Ω \parallel pF
	Output: $Z_{OUT} = R_{OUT} \parallel C_{OUT}$	—	1,2 \parallel 4,4	—	k Ω \parallel pF
Temperature coefficient of frequency					
	TC_f	—	-72	—	ppm/K



SAW Components

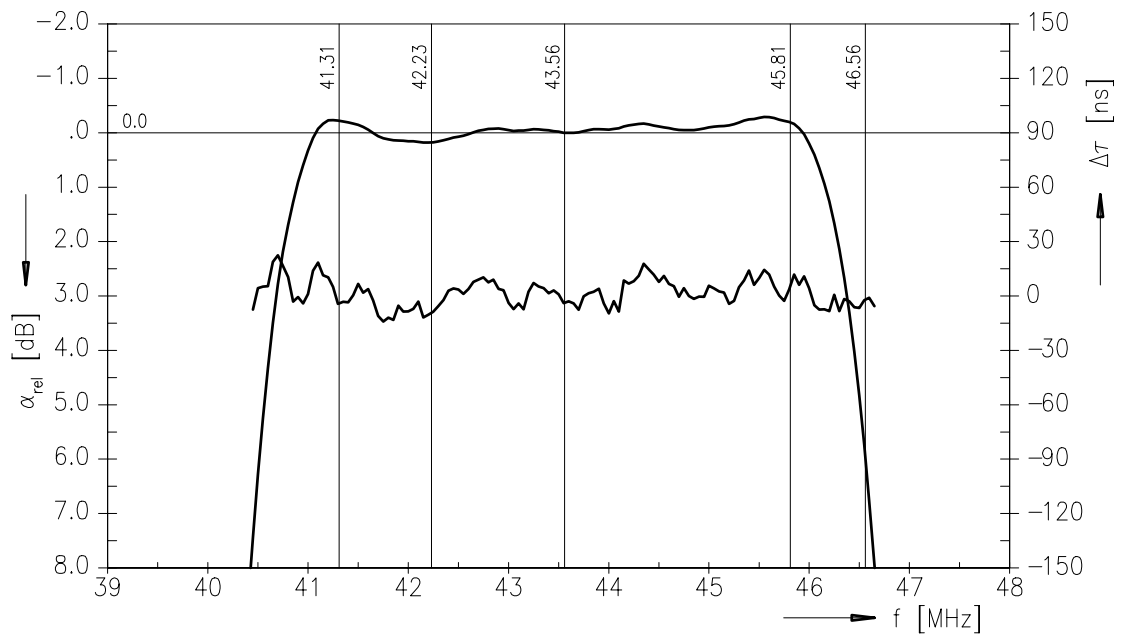
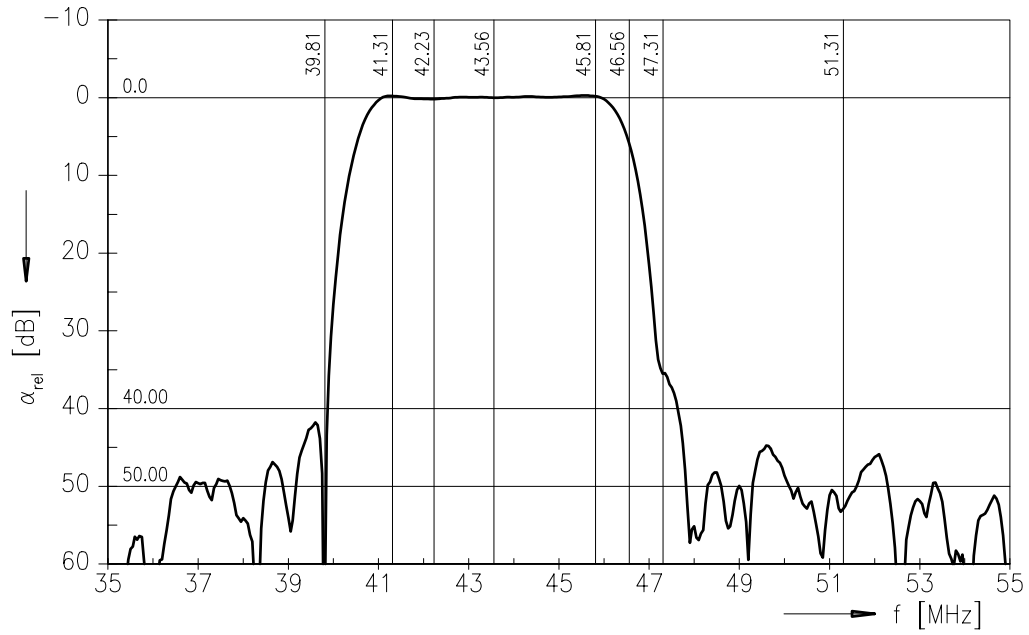
M 4952 M

Vestigial Sideband Filter

45,75 MHz

Data Sheet

Frequency response





SAW Components

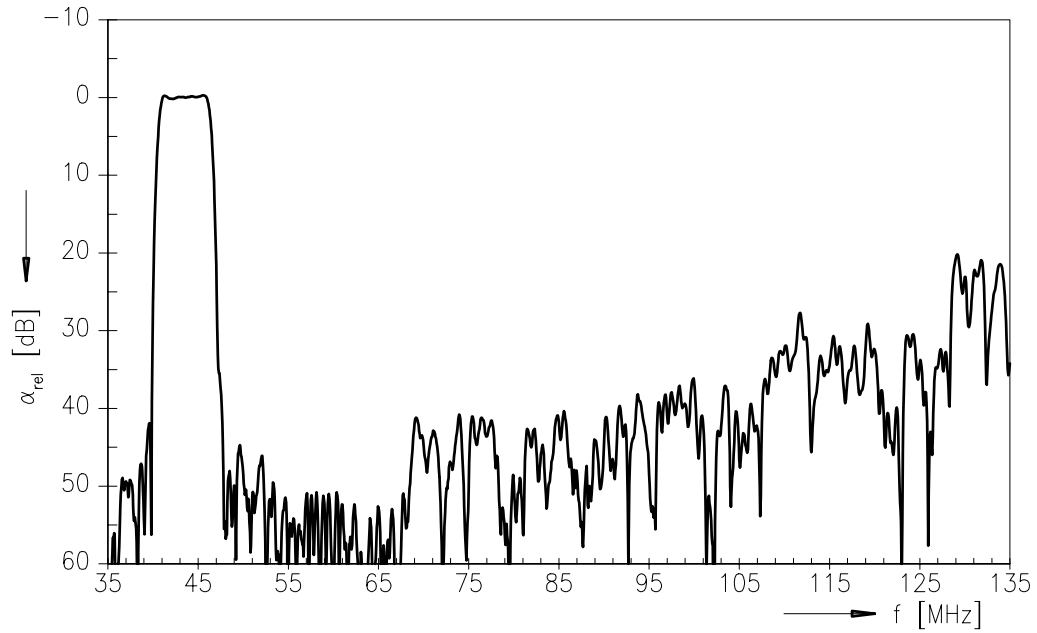
M 4952 M

Vestigial Sideband Filter

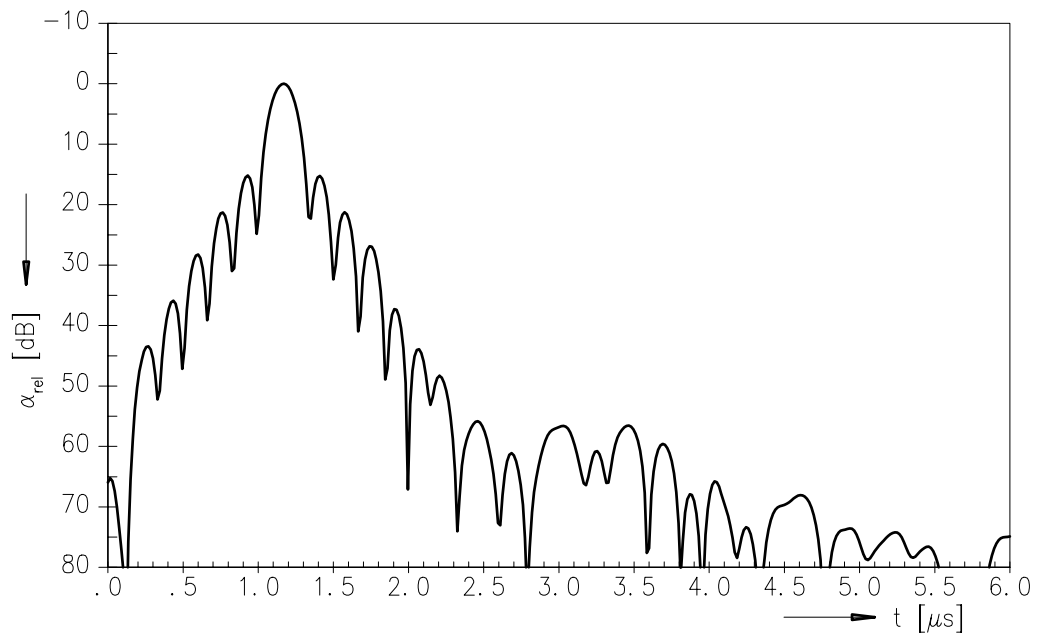
45,75 MHz

Data Sheet

Frequency response



Time domain response





SAW Components

M 4952 M

Vestigial Sideband Filter

45,75 MHz

Data Sheet

Published by EPCOS AG

Surface Acoustic Wave Components Division, SAW CE MM PD

P.O. Box 80 17 09, D-81617 München

© EPCOS AG 2001. All Rights Reserved.

As far as patents or other rights of third parties are concerned, liability is only assumed for components per se, not for applications, processes and circuits implemented within components or assemblies.

The information describes the type of component and shall not be considered as assured characteristics.

Terms of delivery and rights to change design reserved.

For questions on technology, prices and delivery please contact the sales offices of EPCOS AG or the international representatives.

Due to technical requirements components may contain dangerous substances. For information on the type in question please also contact one of our sales offices.