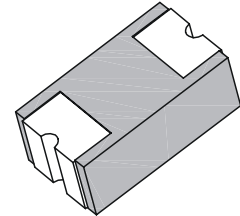


## 200mA Low Profile Chip Schottky Rectifier

### Features

- Low profile with SMD package
- Low power loss , High efficiency
- High current capability, Low voltage drop
- Plastic package has Underwriters Laboratory Flammability Classification 94V-0
- RoHS compliant



C0805  
(SOD-323)



### Mechanical Data

|                   |  |
|-------------------|--|
| <b>Case:</b>      | 0805 SMD package, Molded plastic body                    |
| <b>Terminals:</b> | Pure Tin plated, solderable per MIL-STD-750, Method 2026 |
| <b>Polarity</b>   | Laser cathode band marking                               |
| <b>Weight:</b>    | 0.005 gram   |

### Maximum Ratings *(T<sub>Ambient</sub>=25°C unless noted otherwise)*

| Symbol        | Description                               | TSCD022WS   | TSCD024WS | Unit | Conditions                  |
|---------------|---|-------------|-----------|------|-----------------------------|
|               | Marking Code                              | D2          | D4        |      |                             |
| <b>VRRM</b>   | Repetitive Peak Reverse Voltage           | 20          | 40        | V    |                             |
| <b>VRWM</b>   | Working Peak Reverse Voltage              | 20          | 40        | V    |                             |
| <b>IF(AV)</b> | Forward Rectified Current                 | 200         |           | mA   |                             |
| <b>IFSM</b>   | Non-repetitive Peak Forward Surge Current | 2.0         |           | A    | 8.3ms single half sine-wave |
| <b>TJ</b>     | Operating Junction temperature range      | -40 to +125 |           | ° C  |                             |
| <b>TSTG</b>   | Storage Temperature Range                 | -40 to +125 |           | ° C  |                             |

### Electrical Characteristics *(T<sub>Ambient</sub>=25°C unless noted otherwise)*

| Symbol    | Description     | TSCD022WS | TSCD024WS | Unit | Conditions |
|-----------|-----------------|-----------|-----------|------|------------|
| <b>VF</b> | Forward Voltage | 0.45      | 0.50      | V    | IF= 200 mA |
| <b>IR</b> | Reverse Current | 50        |           | µA   |            |

# 200mA Low Profile Chip Schottky Rectifier

## TSCD022WS-TSCD024WS

### Typical Characteristics Curves

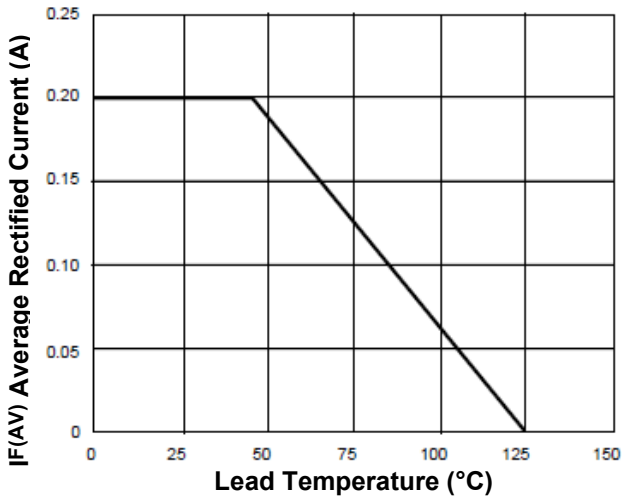


Fig.1- Forward Current Derating Curve

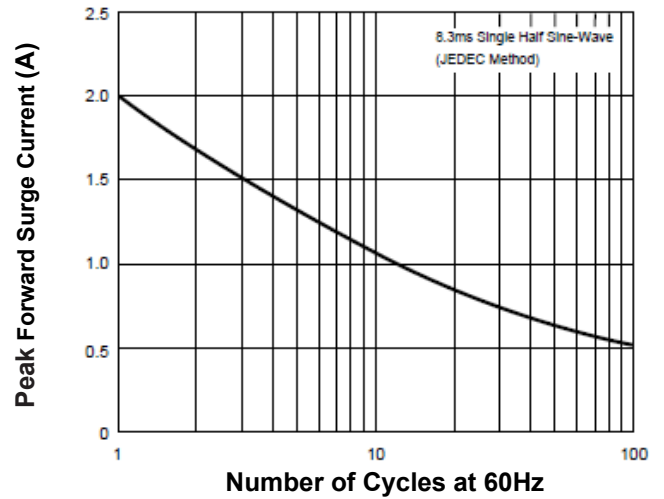
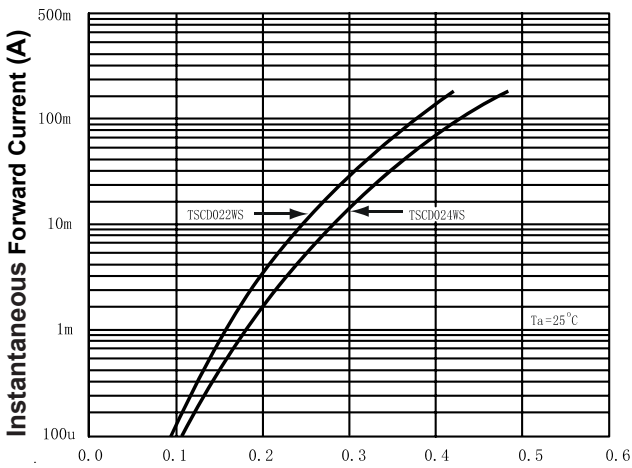
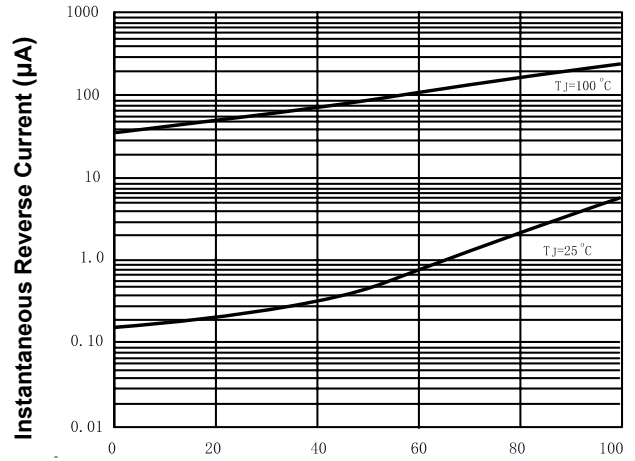


Fig.2- Max. Non-Repetitive Forward Surge Current



Instantaneous Forward Voltage (V)  
Fig.3- Typical Forward Characteristics



Percent of Rated Peak Reverse Voltage (%)  
Fig.4- Typical Reverse Characteristics

# 200mA Low Profile Chip Schottky Rectifier

## TSCD022WS-TSCD024WS

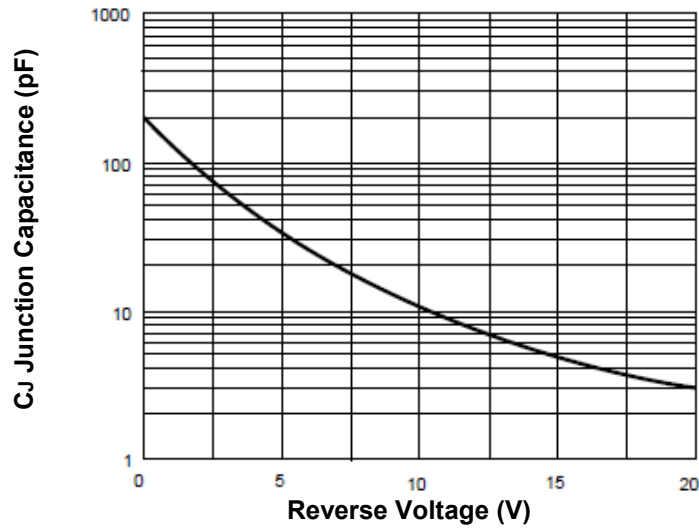
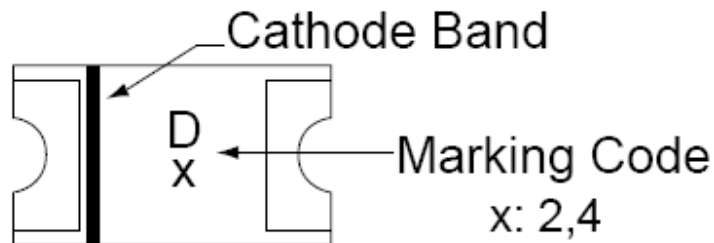


Fig.5-Typical junction capacitance

### Marking Information:

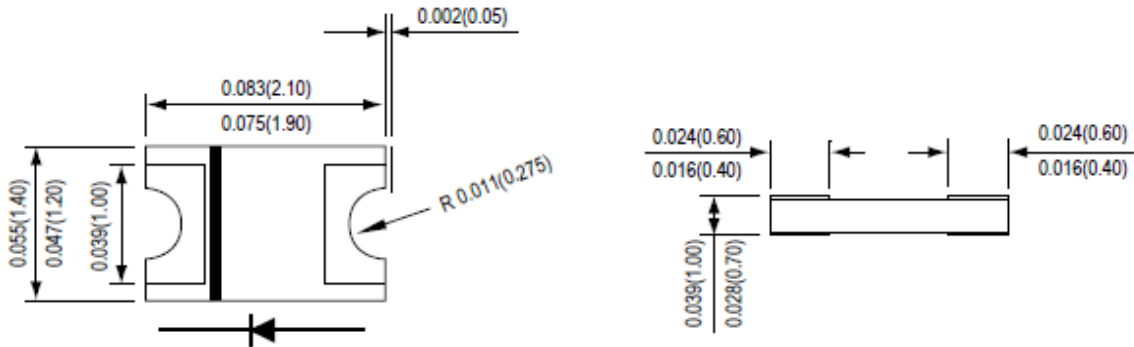


# 200mA Low Profile Chip Schottky Rectifier

## TSCD022WS-TSCD024WS

### Dimensions in inch (mm)

#### C0805 (SOD-323)



### How to contact us:

#### US HEADQUARTERS

28040 WEST HARRISON PARKWAY, VALENCIA, CA 91355-4162

Tel: (800) TAITRON (800) 824-8766 (661) 257-6060

Fax: (800) TAITFAX (800) 824-8329 (661) 257-6415

Email: [taitron@taitroncomponents.com](mailto:taitron@taitroncomponents.com)

Http://[www.taitroncomponents.com](http://www.taitroncomponents.com)

#### TAITRON COMPONENTS MEXICO, S.A .DE C.V.

BOULEVARD CENTRAL 5000 INTERIOR 5 PARQUE INDUSTRIAL ATITALAQUIA, HIDALGO C.P.

42970 MEXICO

Tel: +52-55-5560-1519

Fax: +52-55-5560-2190

#### TAITRON COMPONENTS INCORPORATED REPRESENTAÇÕES DO BRASIL LTDA

RUA DOMINGOS DE MORAIS, 2777, 2.ANDAR, SALA 24 SAÚDE - SÃO PAULO-SP 04035-001 BRAZIL

Tel: +55-11-5574-7949

Fax: +55-11-5572-0052

#### TAITRON COMPONENTS INCORPORATED, SHANGHAI REPRESENTATIVE OFFICE

METROBANK PLAZA, 1160 WEST YAN' AN ROAD, SUITE 1503, SHANGHAI, 200052, CHINA

Tel: +86-21-5424-9942

Fax: +86-21-5424-9931