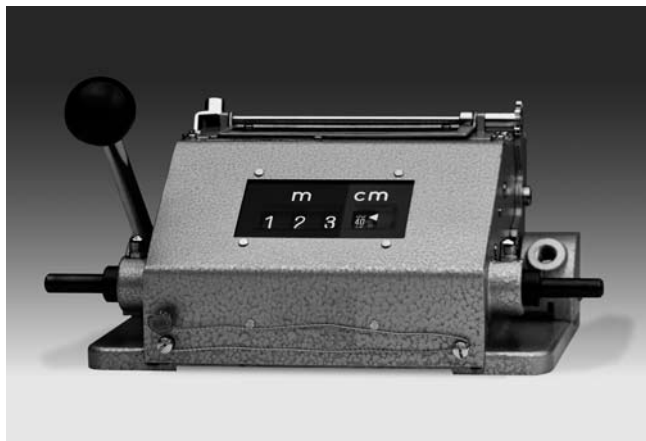


# Totalizers mechanic

Meter counters with imprint feature PTB approved, adding

Display 5 digits, manual reset by lever

## M 275



M 275 - PTB Meter counter

### Features

- PTB Meter counter, large
- Adding
- Display 5-digits
- Imprint of the measured result on cards
- Reset by lever

### Technical data - mechanical design

Function	PTB Meter counter with imprint
Display	White numbers on black 1st number wheel with scale
Number of digits	4-digits
Digit height	7 mm (numeral readout) 4.5 mm (printed numerals)
Reset	Manual by reset lever
Imprint	By lever upon reset
Imprint on	Labels
Card thickness	≤0.4 mm
Card width	28...72 mm
Imprint correction	Imprint is rounded to 5 cm
Ink ribbon	Width 13 mm, length 3 m automatic ink ribbon transport
Count mode	Adding in a rotational direction to be indicated, subtracting in reverse direction. 2 revs. = 10 counts
Drive shaft	Both sides, ø7 mm
Measuring speed	2 revs. = 10 di. = <250.0 m/min
Measuring precision	1 cm
Measuring range	999.99 m
Operating temperature	0...+60 °C
Housing type	Housing with ground plate
Housing colour	Hammertone green
Dimensions W x H x L	200 x 115 x 75 mm
Dimensions mounting plate	167 x 115 mm
Mounting	Surface mount housing
Weight approx.	2200 g
Material	Aluminium die cast alloy

### Description

Besides measuring operations, counter M 275 enables imprint of the measured result on labels what means a considerable benefit compared to standard displays for pure readout. Imprint and reset are manual operations with automatic ink ribbon transport. The counter is driven either directly by the measuring roller or by measuring wheels running over the surface of the measured material. The meter counter goes together with measuring wheels of 0.5 m circumference.

#### Calibrated meter counters with imprint function

Meter counter M 275 is calibrated by the German Physical-Technical Institute (PTB) and approved for calibrated measuring systems. However, our customers must apply for calibration of the whole measuring system at the corresponding calibration authorities.

#### Imprint correction balance

Prior to imprint, the counter will always set respectively reset the first digit to the nearest integer number what might result in inferior deviation in each printing operation.

# Totalizers mechanic

## Meter counters with imprint feature PTB approved, adding Display 5 digits, manual reset by lever

M 275

### Part number

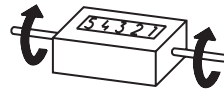
M 275. 010 A A

Display  
A 4-digits 999.99 m

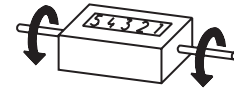
Count mode / drive  
07 2 revolutions = 10 digits / direction I  
08 2 revolutions = 10 digits / direction II

Reset  
010 With reset lever

### Direction of strokes and rotation



Away from user  
Sense of rotation I



Towards user  
Sense of rotation II

### Accessories

#### Measuring wheels (page %S)

MR512.07A Circumf. 50 cm, knurled aluminium

MR542.07D Circumf. 50 cm, smooth Hytrel TPE-E

MR552.07A Circumf. 50 cm, smooth Vulkollan PUR

MR562.07A Circumf. 50 cm, knopped rubber NBR Nitril

MR592.07D Circumf. 50 cm, grooved Hytrel TPE-E

### Dimensions

