

CHAMFER INDICATES PACKAGE PIN#1 ORIENTATION

NOTE: SCALLOP IS CENTERED ON SIDE OF TRAY

NOTES :

1. MATERIAL - PP6.
2. ALL DIMENSIONS ARE IN MILLIMETERS.
3. TOLERANCES -  $XX = \pm 0.25$   
 $- X.XX = \pm 0.13$   
 UNLESS OTHERWISE SPECIFIED.
4. ESD - SURFACE RESISTIVITY  
 $- 105$  TO  $10^{11}$  OHMS/SQ.
5. FOR PACKAGE - PBGA11X11
6. PART NO. : NH BG1111 1.5 0822 6  
 (PLEASE INDICATE ON PURCHASE ORDER).

SEE DETAIL D

REV. NO.	ECN #	DESCRIPTION	DATE
1	P-00908	CHANGE SURFACE RESISTIVITY	1 FEB. 99
0		RELEASED FOR PRODUCTION	22 JUN. 98

THIS DOCUMENT CONTAINS INFORMATION PROPRIETARY TO PEAK PLASTIC & METAL PRODUCTS INTERNATIONAL LIMITED. REPRODUCTION DISCLOSE OR USE OF THIS DOCUMENT IS EXPRESSLY PROHIBITED EXCEPT OTHERWISE AGREED UPON IN WRITING.

DRAWN BY :	WANG
CHECKED BY :	
APPROVED BY :	
DO NOT SCALE DRAWING	

PAGE 1 OF 2
DATE : 1 FEB 99
DATE : 1 FEB 99
DATE : 1 FEB 99
CODE : CSA04782

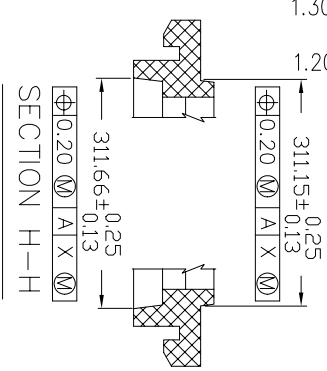
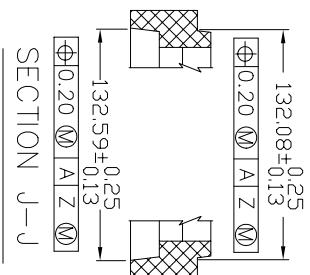
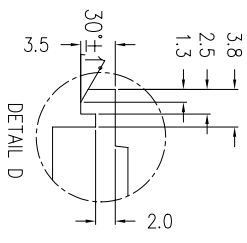
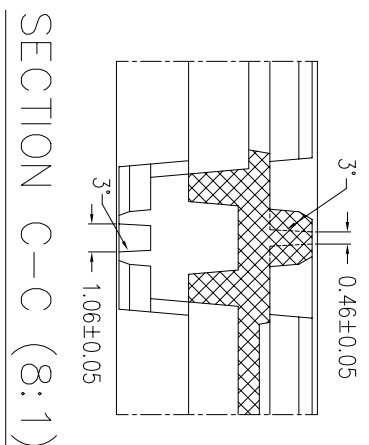
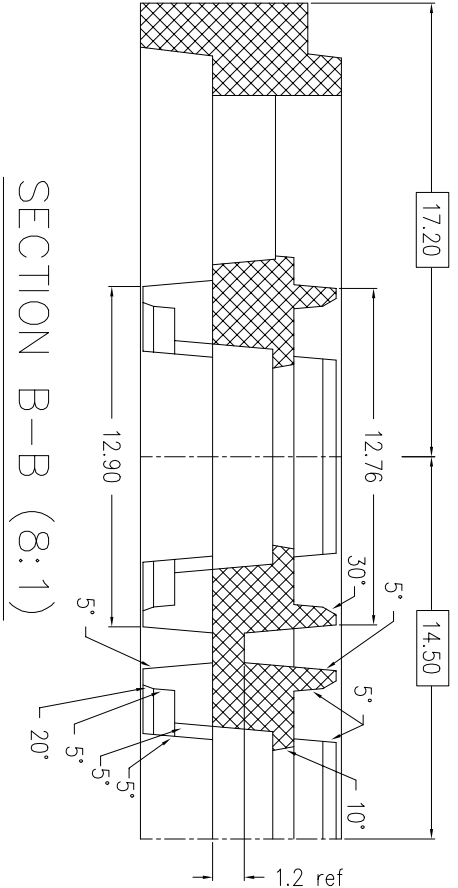
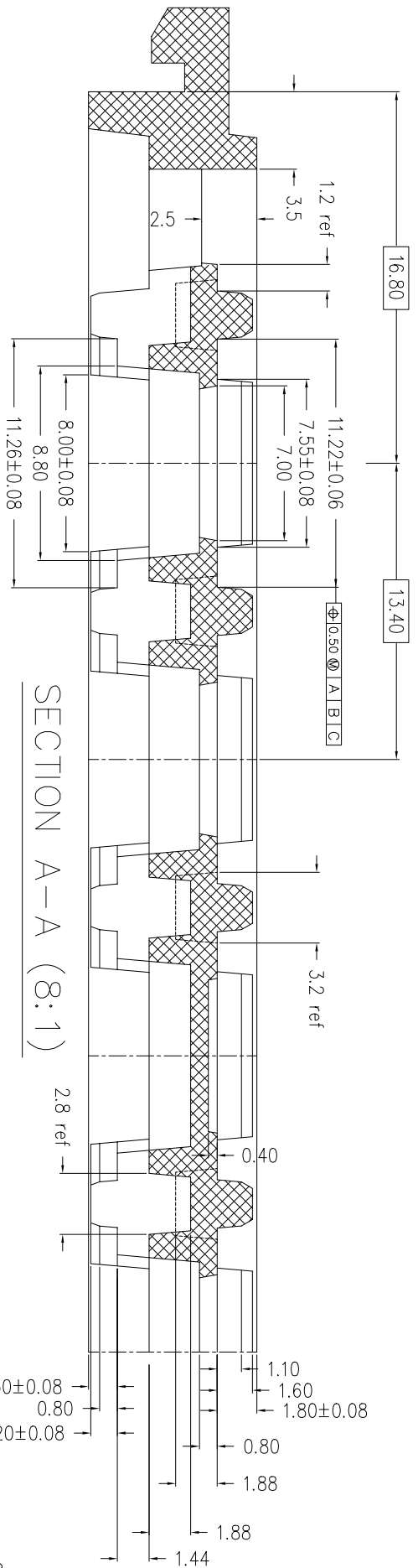
CUSTOMER : **PEAK**

TITLE : NH BG1111 1.5 0822 6

DWG NO. : NH BG1111 1.5 0822 6

REV. 1





REV. NO.	ECN #	DESCRIPTION	DATE
1	P-00908	CHANGE SURFACE RESISTIVITY	1 FEB. 99
0		RELEASED FOR PRODUCTION	22 JUN. 98

THIS DOCUMENT CONTAINS INFORMATION PROPRIETARY TO PEAK PLASTIC & METAL PRODUCTS INTERNATIONAL LIMITED. REPRODUCTION DISCLOSEURE OR USE OF THIS DOCUMENT IS EXPRESSLY PROHIBITED EXCEPT OTHERWISE AGREED UPON IN WRITING.

DRAWN BY :	Wang	PAGE 2 OF 2
CHECKED BY :		DATE : 1 FEB 99
APPROVED BY :		DATE : 1 FEB 99
DO NOT SCALE DRAWING		DATE : 1 FEB 99
		CODE : CSA04782



CUSTOMER :	PEAK
TITLE :	NH BG1111 1.5 0822 6
DWG NO.:	NH BG1111 1.5 0822 6
REV.	1