

- SPACE QUALIFIED
- 2.0 - 2.5 GHz, QUADRATURE HYBRID, SMA



TECHNICAL DESCRIPTION / APPLICATION

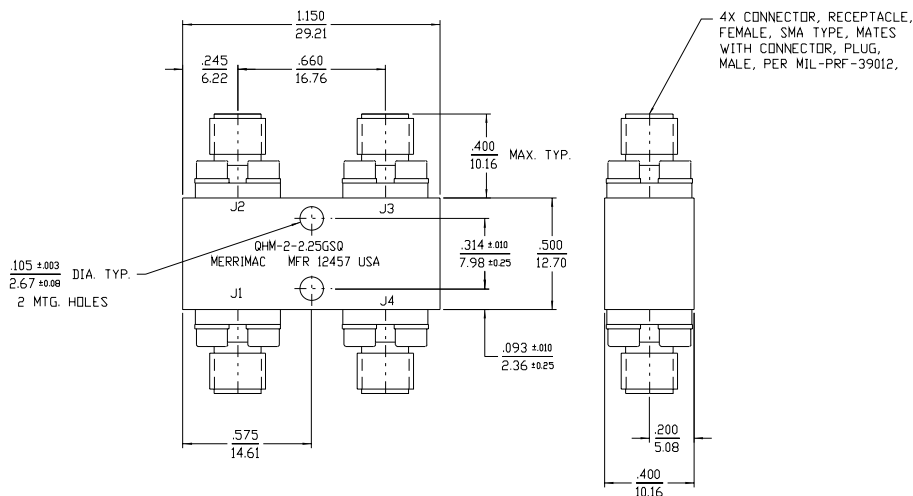
The QHM-2-2.25G SQ Quadrature Hybrid Divider/Combiner covers 2.0 - 2.5 GHz. It uses a rugged stripline design which provides high isolation and low VSWR. This unit has been designed, manufactured and qualified per Merrimac document CENG-0001, "Standard Design Requirements for Space Qualified Devices".

SERIES 03

GENERAL SPECIFICATIONS

MODEL NUMBER	FREQUENCY RANGE GHz	ISOLATION dB MIN.	INSERTION LOSS MAX.	AMPLITUDE BALANCE MAX.	VSWR MAX.
QHM-2-2.25G SQ	2.0 - 2.5	22 dB	0.3 dB	0.5 dB	1.20:1
PHASE BALANCE	CW INPUT POWER	IMPEDANCE NOM.	OPERATING TEMPERATURE	WEIGHT MAX.	
90° ± 2°	10 W	50 OHM	-55° to +85 ° C	1.0 oz.	

PACKAGE OUTLINE



- NOTES:
1. TOLERANCE ON 3 PLACE DECIMALS ±.020 (.51mm) EXCEPT AS NOTED.
 2. DIMENSIONS IN INCHES OVER MILLIMETERS.
 3. METRIC EQUIVALENTS ARE TO THE NEAREST .01mm.
 4. WEIGHT: 1.0 OZ MAX.