

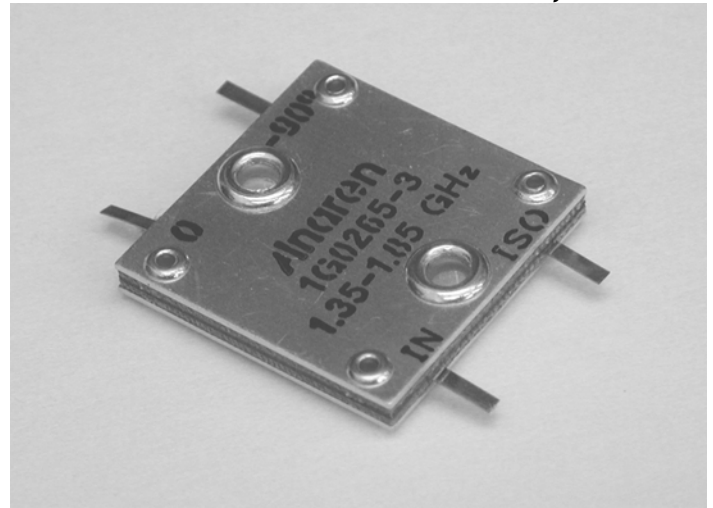
### Hybrid Couplers 3 dB, 90°

#### Applications

- Microstrip Circuits
- Dividers/Combiners
- Switch Networks
- Balanced Detectors
- Antenna Feeds

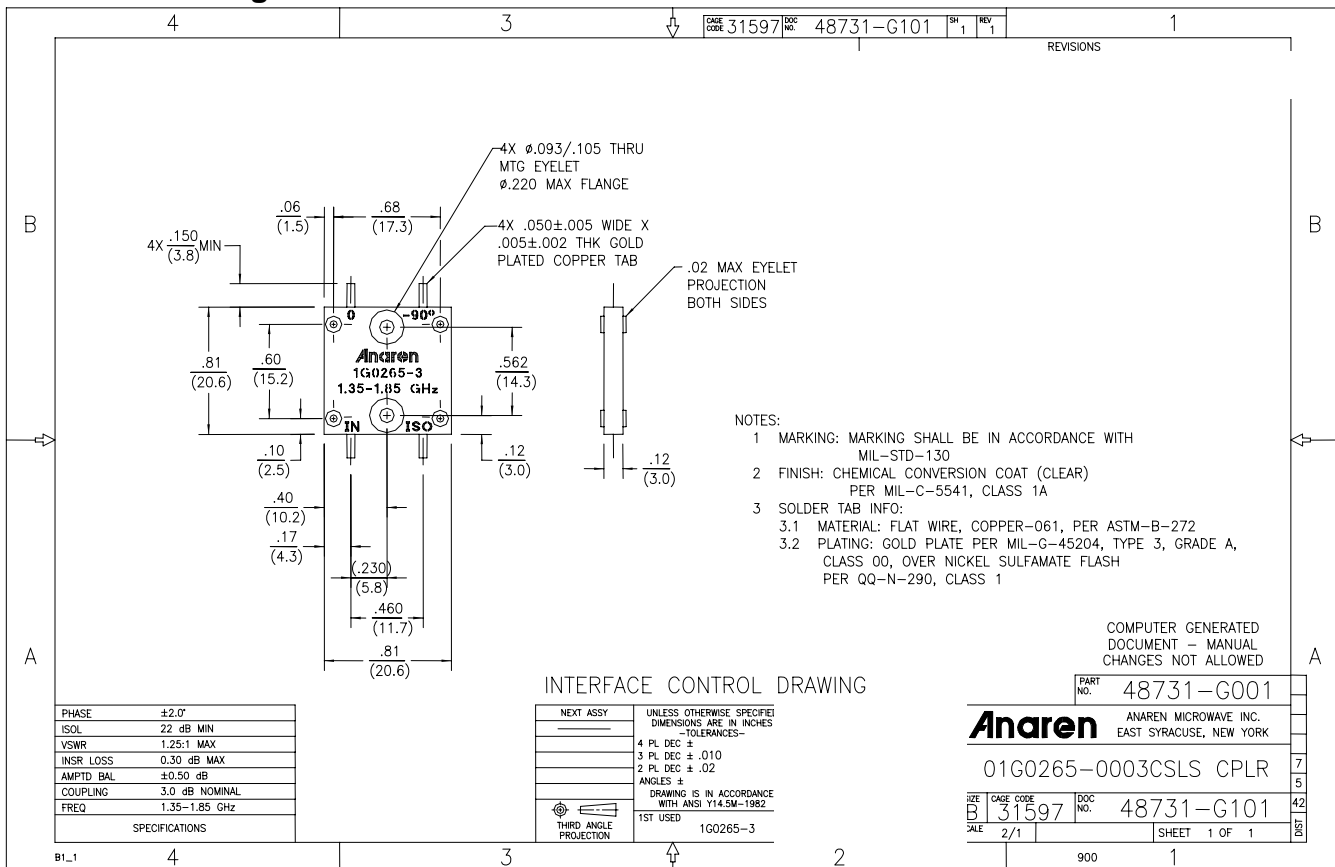
#### Features

- 1.35 – 1.85 GHz
- Welded Tab mount
- Reliable Performance
- Handles 100 Watts
- Meets MIL-E-5400 Class 3 Requirements



**NOTES:** Anaren Power rating applies when solder tab/coupler interface has been conformally coated.  
Electrical and Mechanical Specifications subject to change without notice.

#### Outline Drawing

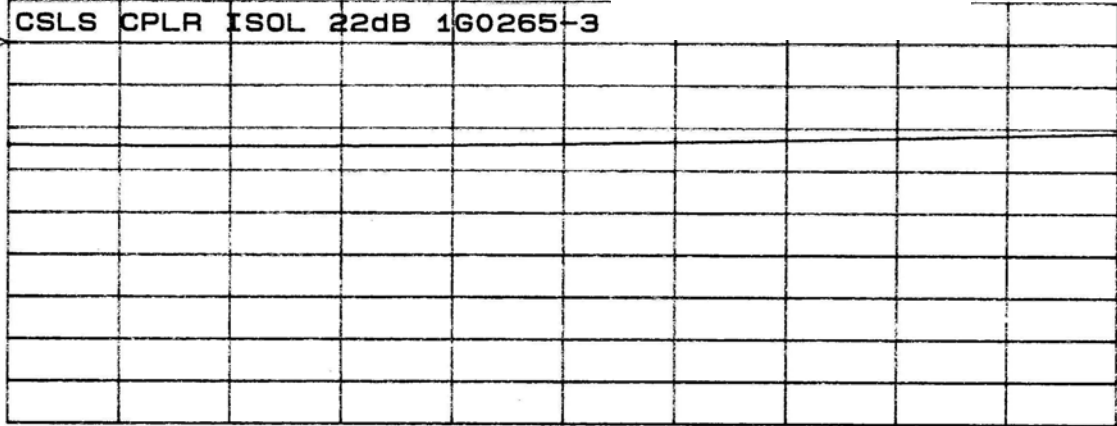


## Typical Test Data Plots

CH1 MEM log MAG 11 dB/ REF 0 dB

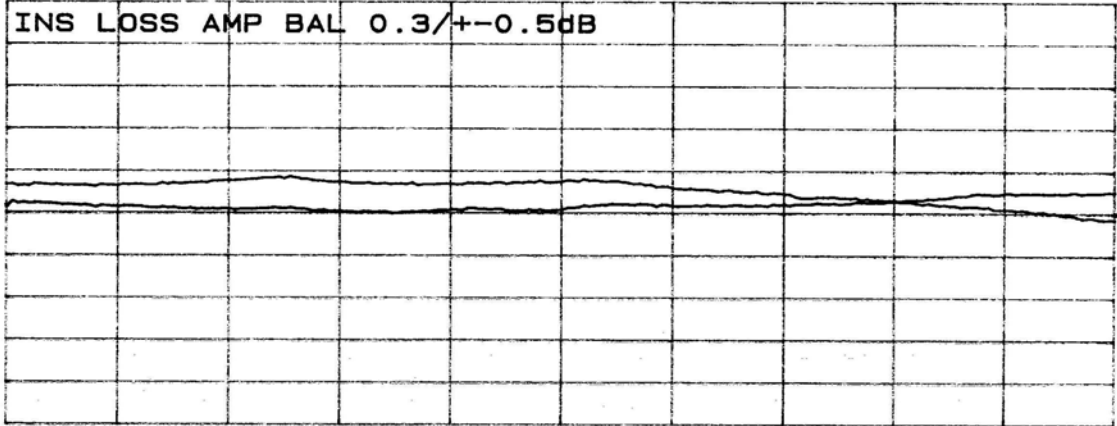
CSLS CPLR ISOL 22dB 1G0265-3

Cor

CH2 S<sub>21</sub> log MAG .5 dB/ REF -3.3 dB

INS LOSS AMP BAL 0.3/+-.5dB

Cor



START 1.3500 GHz

STOP 1.8500 GHz