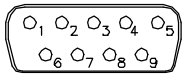


9-PIN CONNECTOR
WIRING DIAGRAM
(PHASESHIFTER)

PIN#	OPERATION
2+ 7-	DECREASE PHASE
2- 7+	INCREASE PHASE
1/ 6	MAX. POSITION INDICATOR
3/ 8	MIN. POSITION INDICATOR
5	WIPER (TRACKING POT)
4/ 9	TRACKING POT

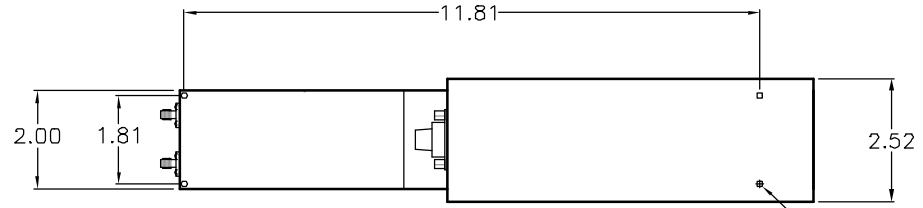


9-PIN D-SUB CONN. (F)

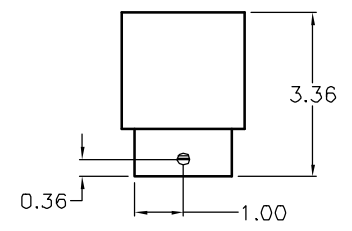
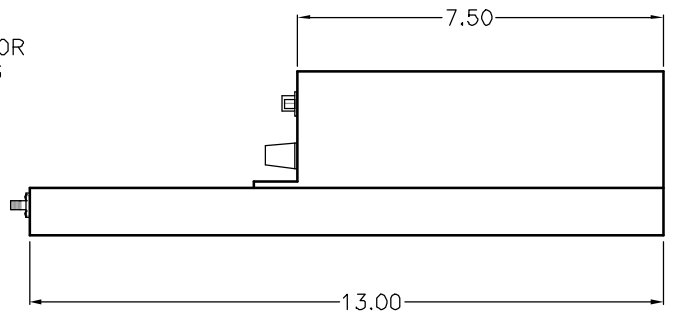
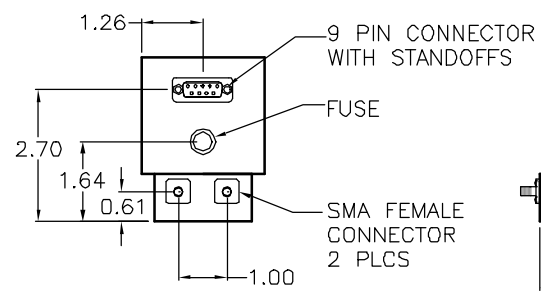
NOTES:

- 24 V DC MOTOR
- 10 K ohm FOLLOWER POT (OPTIONAL)
- 2 AMP FUSE

REVISIONS				
ZONE	REV	DESCRIPTION	DATE	APPROVED
	A	INITIAL RELEASE	06/15/01	
	B	UPDATED PIN-OUT TABLE	9/24/02	



4-40 THREAD MOUNTING HOLES
0.50 DP FAR SIDE
4 PLCS



UNLESS OTHERWISE SPECIFIED
DIMENSIONS ARE IN INCHES
TOLERANCES ARE:
FRACTIONS DECIMALS ANGLES
±1/64 .01± ±1/2 DEG.
.005±

MATERIAL
6061
Aluminum
FINISH
ATM
Standard Grey

PROPRIETARY NOTICE
The information contained in this drawing is
proprietary and shall not be used or disclosed
without the prior written consent of ATM, Inc.



DRAWN
M. ROTUNDA
CHECKED
APPROVED

DATE
06/15/01

ADVANCED TECHNICAL MATERIALS, INC.
49 RIDER AVENUE, PATCHOGUE N.Y. 11772
TEL: (631) 289-0363 FAX: (631) 289-0358

12" PHASESHIFTER OUTLINE
MOTORDRIVE

SIZE A	FSCM NO. OR8N4	DWG NO. 4319W	REV B
-----------	-------------------	------------------	----------

P1212-28

DO NOT SCALE DRAWING

SCALE: 1 To 4 SHEET 1 OF 1