

TECHNICAL DESCRIPTION

FEATURES

- 130 - 174 MHz
- LOW LOSS
- HIGH ISOLATION
- EXCELLENT PHASE/AMPLITUDE BALANCE
- HIGH POWER HANDLING
- SURFACE MOUNT

APPLICATIONS

- HOMELAND SECURITY



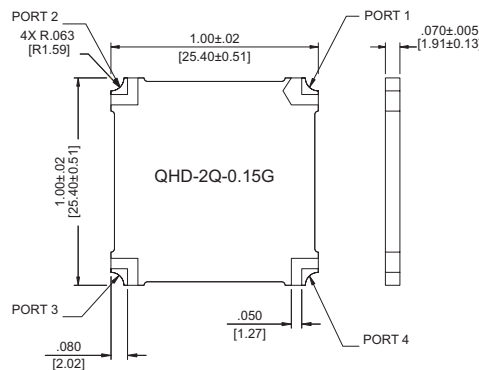
The QHD-2Q-0.15G series is a member of the Multi-Mix QHD family of 3-dB 90° couplers for use in the 130 - 174 MHz range. The QHD-2Q-0.15G exhibits low insertion loss, low VSWR, and high isolation. Excellent phase and amplitude balance and high RF power handling capability make this series ideal for use in land mobile radio systems.

The construction of QHD quad hybrids is based on fusion bonded multilayer stripline structures. The fusion bonding process yields homogeneous monolithic dielectric structures with reliability, ruggedness, and electrical and thermal performance that are superior to conventional adhesive bonding techniques.

GENERAL SPECIFICATIONS

FREQUENCY RANGE (MHz)		INSERTION LOSS (dB MAX)	AMPLITUDE BALANCE (dB MAX)	PHASE BALANCE
130 - 174		0.25	± 0.25	90 ± 3°
ISOLATION (dB MIN)	VSWR (MAX, ALL PORTS)	AVERAGE POWER (WATTS, MAX.)	RF INTERFACE	OPERATING TEMPERATURE
20	1.20:1	250	Leadless Surface Mount	-55° - +85° C

PACKAGE OUTLINE

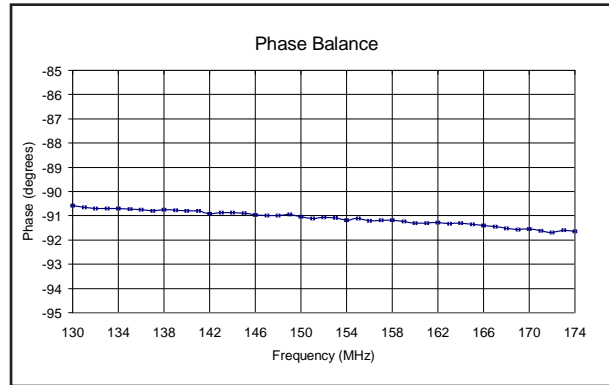
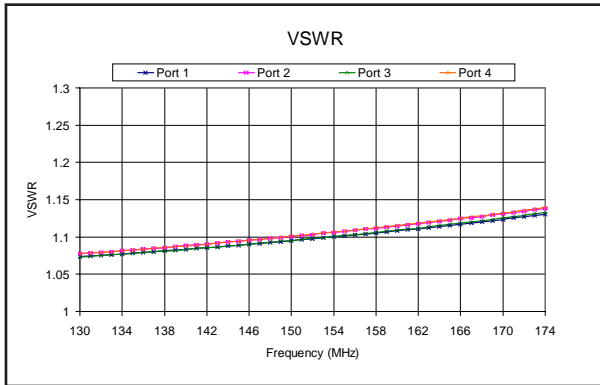
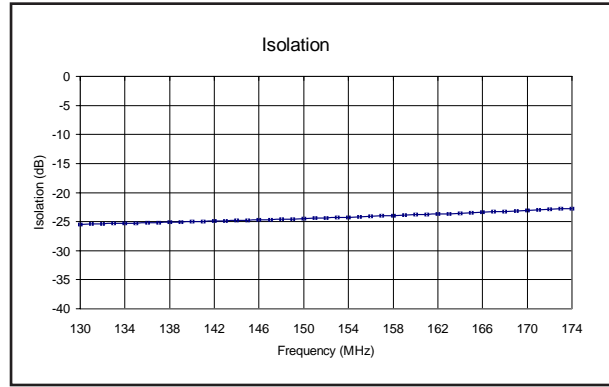
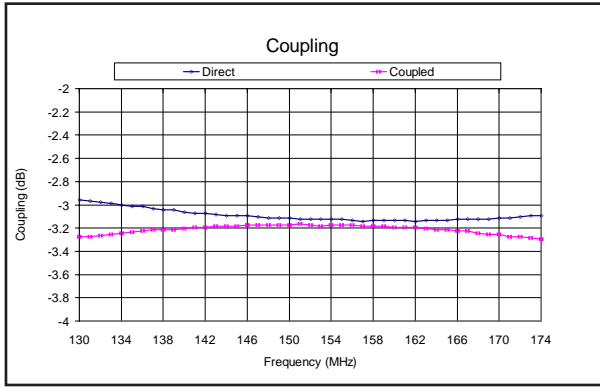


THE MULTI-MIX MICROTECHNOLOGY[®] GROUP IS ISO 9001:2000 REGISTERED

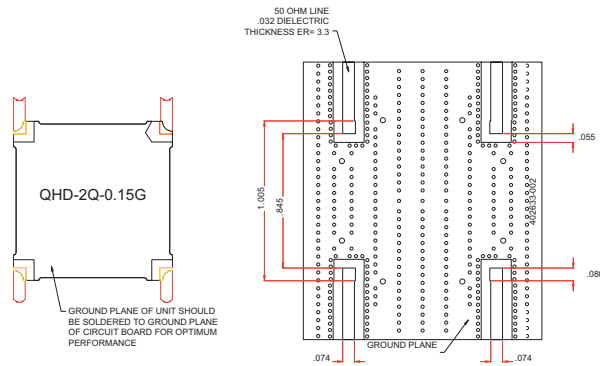


U.S. Patent 6,099,677 and other Patents Pending.

TYPICAL PERFORMANCE



MOUNTING CONFIGURATION



TRUTH TABLE

	1	2	3	4
1	Input	Iso	-90°	0°
2	Iso	Input	0°	-90°
3	-90°	0°	Input	Iso
4	0°	-90°	Iso	Input