

# BNC Series

## BNC Type Connectors



- BNC series is most widely used as 50  $\Omega$  coaxial cable connectors.
- This series is used specially for interface of frequent fit-in/pull-out instruments by small size/light weight bayonet lock mechanism.

Note:

BNC series is intermateable with BNC75 series. (75  $\Omega$  group)

- If 75  $\Omega$  cable is used for this series, the frequency to be applied must be below 200MHz. For more than 200MHz, BNC75 series must be used.

## CONFORMING STANDARD

JIS-C-5412、MIL-C-39012、DSP-C-6202、NTTSpec No.2095

## SPECIFICATION

Characteristic Impedance	50 $\Omega$
Dielectric withstanding voltage	1500V AC (rms) for 1 minute
Insulation resistance	1000M $\Omega$ min. at 500V DC
Contact resistance	3m $\Omega$ max.
VSWR	1.3max. at DC~2GHz

Specifications depends on each connector although these are basic specifications.

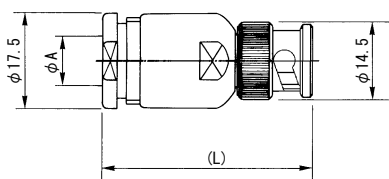
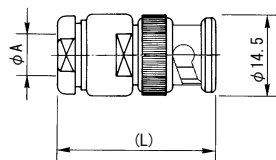
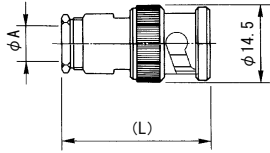
## MATERIAL/FINISH

Shell (Body)	Copper alloy/Silver or Nickel plating
Contact (male)	Copper alloy/Silver or Gold plating
Contact (female)	Copper alloy/Silver or Gold plating
Insulators	PTFE
Gaskets	Silicone rubber

Please ask us for the cable assemblies to assure its performance.

## ■ Plug

### Clamp Type



P/N	Applicable Cable	φ A	(L)	Finish	
				Shell	Contact
BNC-P-3	3D-2V	6.4	25.0	Ag	Ag
	3C-2V				
BNC-P-3-Ni	3D-2V	6.4	25.0	Ni	Ag
	3C-2V				
BNC-P-3-NiCAu	3D-2V	6.4	25.0	Ni	Au
	3C-2V				
BNC-P-58U	RG-55/U	5.4	27.0	Ag	Ag
	RG-58/U				
BNC-P-58U-Ni	RG-55/U	5.4	27.0	Ni	Ag
	RG-58/U				
BNC-P-62U	RG-62/U	6.6	26.2	Ag	Ag
BNC-P-62U-Ni	RG-62/U	6.6	26.2	Ni	Ag
UG-260/U	RG-59/U	6.55	24.6	Ag	Ag
	RG-62/U				
UG-260/U-Ni	RG-59/U	6.55	24.6	Ni	Ag
	RG-62/U				

P/N	Applicable Cable	φ A	(L)	Finish	
				Shell	Contact
BNC-P-3W	3D-2W	7.1	29.1	Ag	Ag
	3C-2W				
BNC-P-3W-Ni-1	3D-2W	7.1	29.1	Ni	Ag
	3C-2W				
BNC-P-3CT	3C-2T	8.0	30.0	Ag	Ag
BNC-P-3CT-Ni	3C-2T	8.0	30.0	Ni	Ag

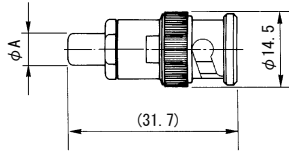
P/N	Applicable Cable	φ A	(L)	Finish	
				Shell	Contact
BNC-P-5	5D-2V	8.6	37.0	Ag	Ag
	5C-2V				
BNC-P-5-Ni	5D-2V	8.6	37.0	Ni	Ag
	5C-2V				
BNC-P-5W	5D-2W	9.2	37.0	Ag	Ag
	5C-2W				
BNC-P-5W-Ni	5D-2W	9.2	37.0	Ni	Ag
	5C-2W				
BNC-P-5CFB	5C-FB	8.6	37.0	Ni	Ag
BNC-SP-5DFB	5D-FB	8.1	39.0	Ni	Ag
BNC-P-5C2T	5C-2T	10.1	37.0	Ag	Ag
BNC-P-7	7C-2V	11.25	37.0	Ag	Ag
BNC-P-7-Ni	7C-2V	11.25	37.0	Ni	Ag

# BNC Series

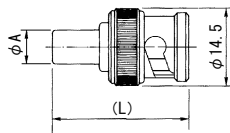
Unit : mm

## ■ Plug

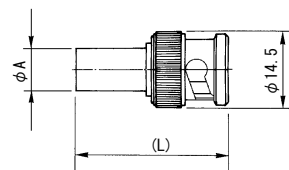
### Crimp Type



P/N	Applicable Cable	φ A	Finish		Hand Crimp Tool P/N
			Shell	Contact	
BNC-P-1.5V-CR	1.5D-2V	5.5	Ag	Ag	CR-H-1100
	1.5C-2V				
BNC-P-1.5V-CR-Ni	1.5D-2V	5.5	Ni	Ag	CR-H-1100
	1.5C-2V				
BNC-P-2.5V-CR	2.5D-2V	5.5	Ag	Ag	CR-H-1100
	2.5C-2V				
BNC-P-2.5V-CR-Ni	2.5D-2V	5.5	Ni	Ag	CR-H-1100
	2.5C-2V				
BNC-P-179U-CR	RG-179/U	5.5	Ag	Ag	CR-H-1100
BNC-P-179U-CR-Ni	RG-179/U	5.5	Ni	Ag	CR-H-1100
BNC-P-1.5V-CR-NiCAu	1.5D-2V	5.5	Ni	Au	CR-H-1100
	1.5C-2V				
BNC-P-2.5V-CR-NiCAu	2.5D-2V	5.5	Ni	Au	CR-H-1100
	2.5C-2V				
BNC-P-188A/U	RG-188A/U	5.5	Ni	Au	CR-H-1100
BNC-P-174U-CR	RG-174/U	5.5	Ni	Au	CR-H-1100



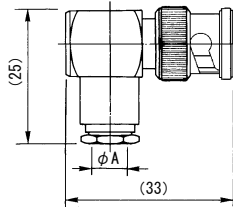
P/N	Applicable Cable	φ A	(L)	Finish		Hand Crimp Tool P/N	Note
				Shell	Contact		
BNC-P-1.5CQEW-CR10	1.5C-QEW	5.5	24.3	Ni	Au	CR-H-1100	Delta-mate
BNC-P-1.5D-CR10	1.5D-XV	4.0	23.3	Ni	Au	CR-H-1120	Delta-mate
	1.5D-QEV						
BNC-P-3C-CR10-BOOT	3C-2V	7.1	24.3	Ni	Au	CR-H-1116	Delta-mate
BNC-P-3D-CR10-BOOT	3D-2V	7.1	24.3	Ni	Au	CR-H-1116	Delta-mate
BNC-P-58U-CR10	RG-58/U	6.3	24.3	Ni	Au	CR-H-1115	—
	RG-58A/U						
BNC-SP-1.5DW-CR1	1.5D-QEW	4.8	29.2	Ni	Au	CR-H-1156	—
BNC-SP-1.5D2W-CR10-1	1.5D-QEW	5.5	24.0	Ni	Ag	CR-H-1100	—
	1.5D-2W						
BNC-P-1.5D2W-CR10-201	1.5D-QEW	5.5	24.3	Ni	Au	CR-H-1100	Delta-mate
BNC-P-3D-CR10	3D-2V	7.1	24.3	Ni	Au	CR-H-1116	—



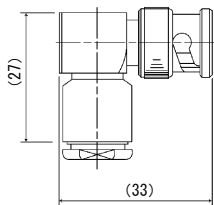
P/N	Applicable Cable	φ A	(L)	Finish		Hand Crimp Tool P/N	Note
				Shell	Contact		
BNC-P-3C-CR1	3C-2V	7.0	28.0	Ag	Ag	CR-H-1102	—
BNC-P-3C-CR1-Ni	3C-2V	7.0	28.0	Ni	Ag	CR-H-1102	—
BNC-P-5C-CR10	5C-2V	9.5	28.7	Ni	Au	CR-H-1130	boot (W)
BNC-P-5C-CR10-B	5C-2V	9.5	28.7	Ni	Au	CR-H-1130	boot (B)

## Right Angle Plug

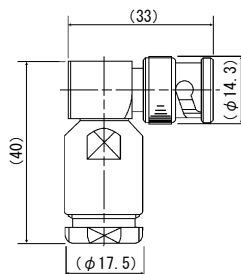
### Clamp Type



P/N	Applicable Cable	φ A	Finish	
			Shell	Contact
BNC-LP-3	3D-2V	6.4	Ag	Ag
	3C-2V			
BNC-LP-3-CAu	3D-2V	6.4	Ag	Au
	3C-2V			
BNC-LP-3-NiCAu	3D-2V	6.4	Ni	Au
	3C-2V			
BNC-LP-3-Ni	3D-2V	6.4	Ni	Ag
	3C-2V			
BNC-LP-5	5D-2V	8.6	Ag	Ag
	5C-2V			
BNC-LP-5-Ni	5D-2V	8.6	Ni	Ag
	5C-2V			
BNC-LP-58U	RG-55/U	5.38	Ag	Ag
	RG-58/U			
BNC-LP-58U-Ni	RG-55/U	5.38	Ni	Ag
	RG-58/U			
BNC-LP-55U	RG-55/U	5.4	Ag	Ag
	RG-58/U			



P/N	Applicable Cable	Finish	
		Shell	Contact
BNC-LP-5	5D-2V	Ag	Ag
	5C-2V		
BNC-LP-5-Ni	5D-2V	Ni	Au
	5C-2V		



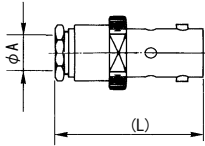
P/N	Applicable Cable	Finish	
		Shell	Contact
BNC-LP-5D2W	5D-2V	Ni	Au
	5C-2V		

# BNC Series

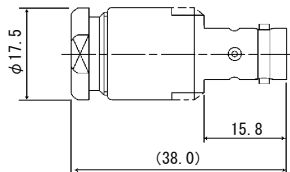
Unit : mm

## Jack

### Clamp Type

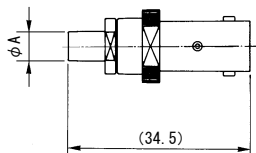


P/N	Applicable Cable	φ A	(L)	Finish	
				Shell	Contact
BNC-J-3	3D-2V	6.4	28.5	Ag	Ag
	3C-2V				
BNC-J-3-Ni	3D-2V	6.4	28.5	Ni	Ag
	3C-2V				
BNC-J-58U	RG-55/U	5.4	28.6	Ag	Ag
	RG-58/U				
BNC-J-62U	RG-59/U	6.55	28.6	Ag	Ag
	RG-62/U				
UG-261/U	RG-59/U	6.6	28.6	Ag	Ag
	RG-62/U				



P/N	Applicable Cable	Finish	
		Shell	Contact
BNC-J-5	5D-2V	Ag	Ag
	5C-2V		

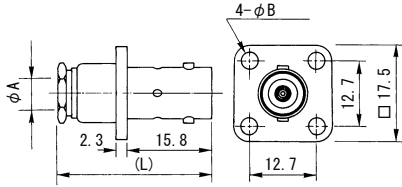
### Crimp Type



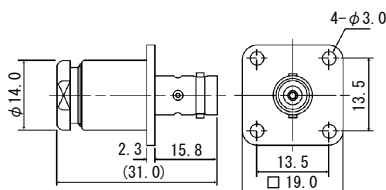
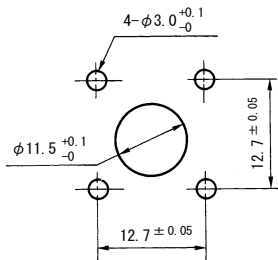
P/N	Applicable Cable	φ A	Finish		Hand Crimp Tool P/N
			Shell	Contact	
BNC-J-2.5-CR	2.5D-2V	5.5	Ag	Ag	CR-H-1100
	2.5C-2V				
BNC-J-1.5V-CR	1.5D-2V	5.5	Ag	Ag	CR-H-1100
	1.5D-QEV				
BNC-J-58U-CR1	RG-55/U	6.3	Ag	Ag	CR-H-1105
	RG-58/U				

## Panel Jack

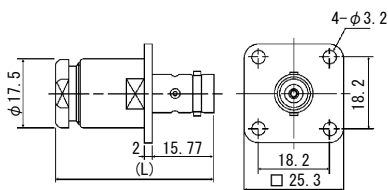
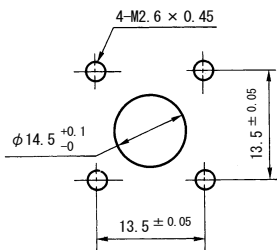
### Clamp Type



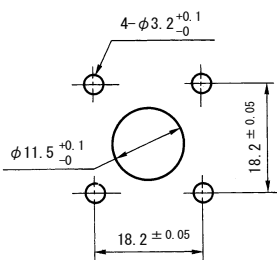
Mounting Hole



Mounting Hole



Mounting Hole



P/N	Applicable Cable	φ A	(L)	φ B	Finish	
					Shell	Contact
BNC-PJ-3	3D-2V	6.4	28.5	3.0	Ag	Ag
	3C-2V					
BNC-PJ-3-Ni	3D-2V	6.4	28.5	3.0	Ni	Ag
	3C-2V					
BNC-PJ-58U	RG-55/U	5.4	27.0	3.0	Ag	Ag
	RG-58/U					
BNC-PJ-58U-Ni	RG-55/U	5.4	27.0	3.0	Ni	Ag
	RG-58/U					
BNC-PJ-58U-NiCAu	RG-55/U	5.4	27.0	3.0	Ni	Au
	RG-58/U					
BNC-PJ-62U	RG-55/U	6.55	28.6	3.0	Ag	Ag
	RG-58/U					

P/N	Applicable Cable	Finish	
		Shell	Contact
BNC-PJ-3W	3D-2W	Ag	Ag
	3C-2W		
BNC-PJ-3W-Ni-1	3D-2W	Ni	Ag
	3C-2W		

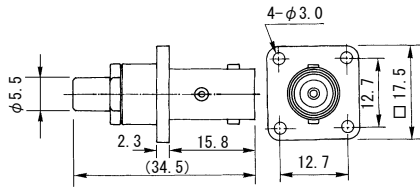
P/N	Applicable Cable	(L)	Finish	
			Shell	Contact
BNC-PJ-5	5D-2V	38.0	Ag	Ag
	5C-2V			
BNC-PJ-5D2W	5D-2W	40.6	Ag	Ag
	5C-2W			

# BNC Series

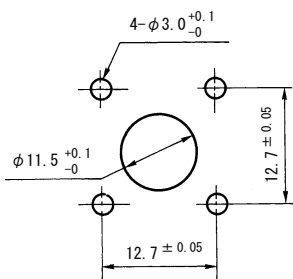
Unit : mm

## Panel Jack

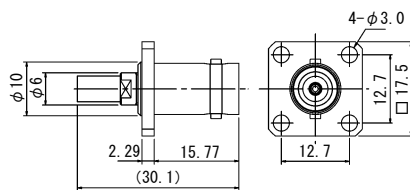
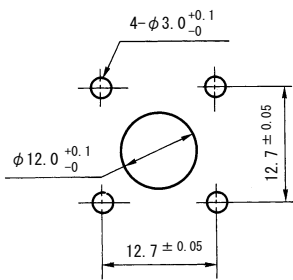
### Crimp Type



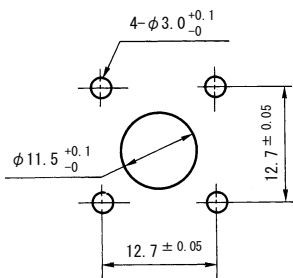
Mounting Hole R



Mounting Hole N



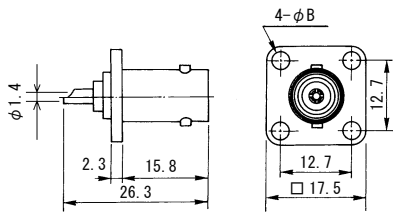
Mounting Hole



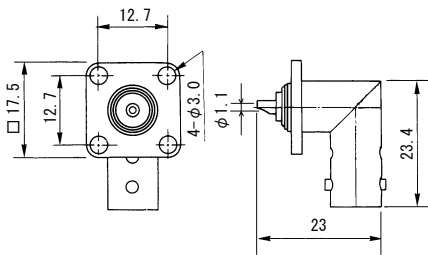
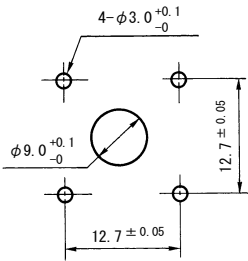
P/N	Applicable Cable	Finish		Hand Crimp Tool P/N	Mounting Hole
		Shell	Contact		
BNC-PJ-1.5V-CR	1.5D-2V	Ag	Ag	CR-H-1100	R
	1.5C-2V				
BNC-PJ-1.5V-CR-Ni	1.5D-2V	Ni	Ag	CR-H-1100	R
	1.5C-2V				
BNC-PJ-2.5V-CR	2.5D-2V	Ag	Ag	CR-H-1100	R
	2.5C-2V				
BNC-PJ-2.5V-CR-Ni	2.5D-2V	Ni	Ag	CR-H-1100	R
	2.5C-2V				
BNC-PJ-179BU-CR	RG-179B/U	Ag	Ag	CR-H-1100	R
BNC-PJ-1.5W-CR-DI	1.5D-QEW	Ni	Au	CR-H-1100	N
BNC-PJ-1.5W-CR-Ni	1.5D-QEW	Ni	Ag	CR-H-1100	N

P/N	Applicable Cable	Finish		Hand Crimp Tool P/N
		Shell	Contact	
BNC-PJ-1.5DW-CR1	1.5D-QEW	Ni	Au	CR-H-1156

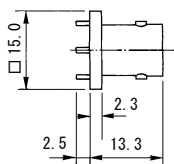
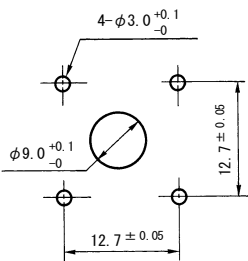
## ■ Receptacle



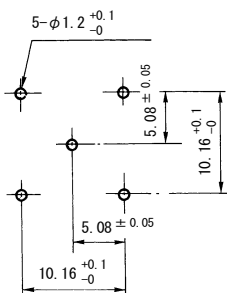
Mounting Hole



Mounting Hole



PCB Mounting Dimensions



P/N	φ B	Finish	
		Shell	Contact
BNC-R	3.1	Ag	Ag
BNC-R-Ni	3.1	Ni	Ag
UG-290/U	M2.6	Ag	Ag
UG-290/U-Ni-1	M2.6	Ni	Ag

P/N	Finish	
	Shell	Contact
BNC-LR	Ag	Ag
BNC-LR-Ni	Ni	Ag

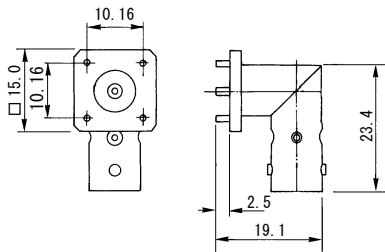
P/N	Finish		Note
	Shell	Contact	
BNC-R-PC-4	Ni	Ag	Locating pins(4pcs):Tin-lead plating
BNC-R-PC-4-Ag	Ni	Ag	Locating pins(4pcs):Ag plating
BNC-R-PC-4-CAu	Ni	Au	Locating pins(4pcs):Tin-lead plating



# BNC Series

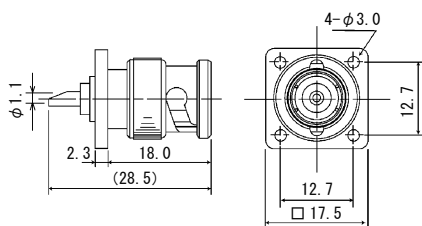
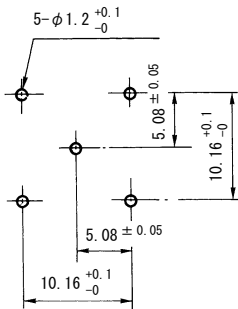
Unit : mm

## ■ Receptacle



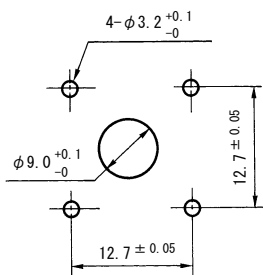
PCB Mounting Dimensions

P/N	Finish		Note
	Shell	Contact	
BNC-LR-PC-4	Ni	Ag	Locating pins(4pcs):Tin-lead plating

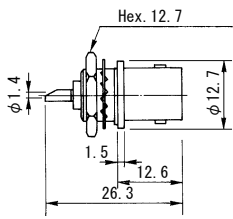


P/N	Finish	
	Shell	Contact
BNC-PR	Ag	Ag
BNC-PR-Ni	Ni	Ag

Mounting Hole

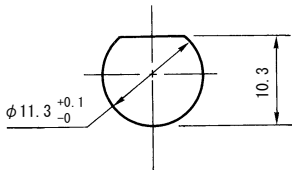


## ■ Bulkhead Receptacle

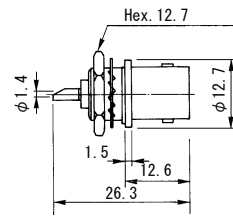


Panel Thickness: 1.2 ~ 3.5

### Mounting Hole

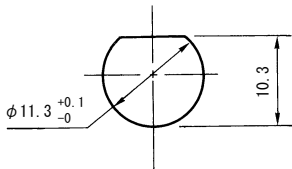


P/N	Finish	
	Shell	Contact
BNC-RB2	Ag	Ag
BNC-RB2-Ni	Ni	Ag
BNC-RB2-NiCAu	Ni	Au

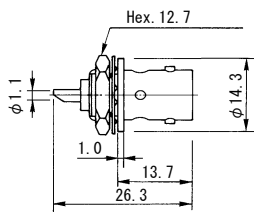


Panel Thickness: 1.2 ~ 3.5

### Mounting Hole

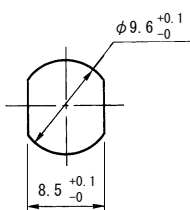


P/N	Finish	
	Shell	Contact
UG-625/U	Ag	Ag
UG-625/U-Ni	Ni	Ag



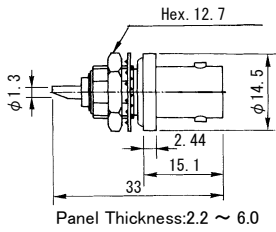
Panel Thickness: 0.7 ~ 2.4

### Mounting Hole

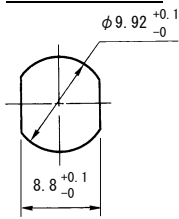


P/N	Finish	
	Shell	Contact
UG-604/U	Ag	Ag
UG-604/U-Ni-1	Ni	Ag

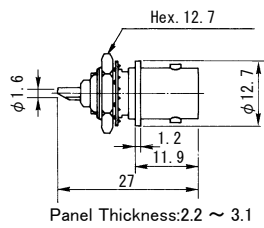
## ■ Bulkhead Receptacle



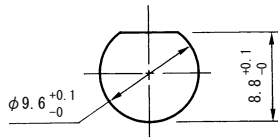
### Mounting Hole



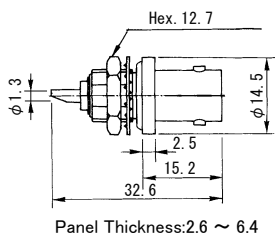
P/N	Finish		Note
	Shell	Contact	
UG-657/U	Ag	Ag	Moisture-Proof Type with flange and O ring
UG-657/U-Ni	Ni	Ag	Moisture-Proof Type with flange and O ring



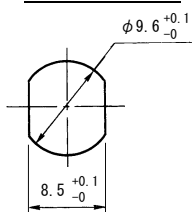
### Mounting Hole



P/N	Finish	
	Shell	Contact
UG-1094/U	Ag	Ag
UG-1094/U-D1	Ni	Au

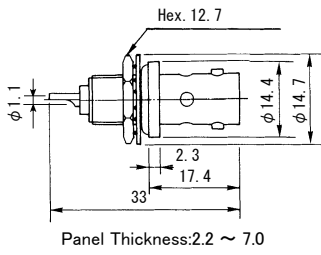


### Mounting Hole



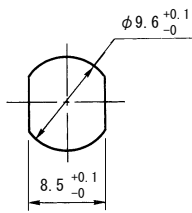
P/N	Finish		Note
	Shell	Contact	
BNC-RBP1	Ag	Ag	Moisture-Proof Type with flange and O ring
BNC-RBP1-Ni	Ni	Ag	Moisture-Proof Type with flange and O ring

## ■ Bulkhead Receptacle



P/N	Finish		Note
	Shell	Contact	
BNC-RB	Ag	Ag	with flange and O ring
BNC-RB-Ni	Ni	Ag	with flange and O ring

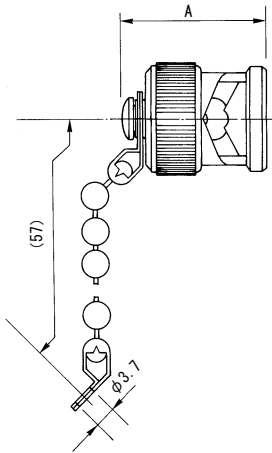
### Mounting Hole



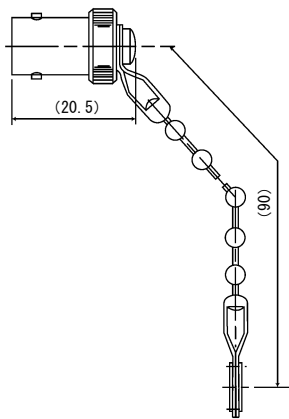
# BNC Series

Unit : mm

## ■ Cap



P/N	Finish	A
BNC-C	Ag	17.9
BNC-C-Ni	Ni	17.9
CW-123A/U	Ag	18.5
CW-123A/U-Ni	Ni	18.5
BNC-CS	Ag	17.8
BNC-CS-Ni	Ni	17.8



P/N	Finish
BNC-JC	Ag
BNC-JC-Ni	Ni