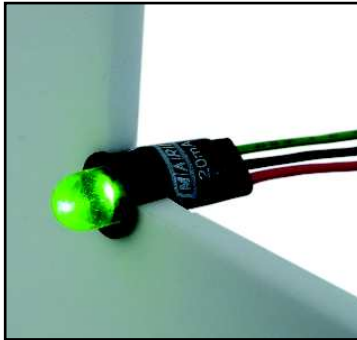


PANEL INDICATOR LEDs - Ø6.35mm Mounting

## FEATURES



### 352 SERIES

PACK QUANTITY = 20 PIECES

- Snap-In
- Supplied with 150mm flying lead terminations as standard
- Sealed to IP40
- 352-535-04 can be used as a tri colour device
- Product illustrated 352-535-04

## SPECIFICATIONS

Ordering Information & Typical Technical Characteristics (Ta = 25°C)

Mean Time Between Failure Typically = 100,000 Hours. Luminous intensity figures refer to the unmodified discrete LED.

PART NUMBER	COLOUR	LENS	VOLTAGE DC Vopr	CURRENT DC Iopr	LUMINOUS INTENSITY Iv@20mA	WAVE LENGTH λp	OPERATING TEMP Topr	STORAGE TEMP Tstg	
<b>STANDARD INTENSITY</b>									
352-505-04	Red	Colour Diffused	2.0*	20	60	627	-40 ~ +85^	-40 ~ +85	Yes
352-511-04	Yellow	Colour Diffused	2.1*	20	40	590	-40 ~ +85^	-40 ~ +85	Yes
352-514-04	Green	Colour Diffused	2.2*	20	40	565	-40 ~ +85^	-40 ~ +85	Yes
352-535-04	Red/Green	Colour Diffused	2.0/2.2*	20	60/50	627/565	-40 ~ +85^	-40 ~ +85	Yes
352-581-20	Red	Colour Diffused	5	13	50@13mA	627	-40 ~ +70^	-40 ~ +85	Yes
352-582-20	Yellow	Colour Diffused	5	13	20@13mA	590	-40 ~ +70^	-40 ~ +85	Yes
352-583-20	Green	Colour Diffused	5	11.5	20@11.5mA	565	-40 ~ +70^	-40 ~ +85	Yes
<b>STANDARD INTENSITY</b>									
352-501-04	Red	Water Clear	1.85*	20	2700	660	-40 ~ +85^	-40 ~ +85	Yes
352-521-04	Yellow	Water Clear	2.2*	20	6100	595	-40 ~ +85^	-40 ~ +100	Yes
352-532-04	Green	Water Clear	3.5*	20	11600	525	-30 ~ +85^	-40 ~ +100	Yes
352-930-04	Blue	Water Clear	3.6*	20	3460	470	-30 ~ +85^	-40 ~ +100	Yes
352-997-04	Cold White	Water Clear	3.6*	20	7800	*see below	-30 ~ +85^	-40 ~ +100	Yes
<b>UNITS</b>			<b>Vdc</b>	<b>mA</b>	<b>mcd</b>	<b>nm</b>	<b>°C</b>	<b>°C</b>	



997	*Typical emission colour cold white			
x	0.296	0.283	0.330	0.330
y	0.276	0.305	0.360	0.318

Intensities (Iv) and colour shades of white (x,y co-ordinates) may vary between LEDs within a batch.

^ = Products must be derated according to the derating information. Each derating graph refers to specific LEDs. Appropriate LED numbers shown. Refer to page 3.

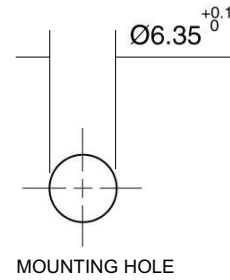
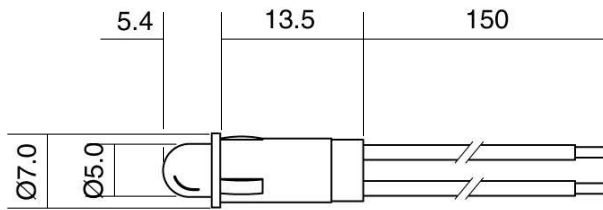
### How to Order:

website: [www.marl.co.uk](http://www.marl.co.uk) • email: [sales@marl.co.uk](mailto:sales@marl.co.uk) •

• Telephone +44 (0)1229 582430 • Fax: +44 (0)1229 585155

The information contained in this datasheet does not constitute part of any order or contract and should not be regarded as a representation relating to either products or service. Marl International reserve the right to alter without notice the specification or any conditions of supply for products or service.

### 352 Series



Dimensions in mm (Typical)  
Not to scale

Anode termination indicated by long tag.  
Mounting hole to be clean and burr free

### MATERIALS

Body	Nylon 6
Panel Washer	N/A
Termination Pins	Tin on Nickel Plated Phosphor Bronze
Retaining Clip	N/A
Lens	Epoxy
Header	PTFE

### TECHNICAL CHARACTERISTICS

SERIES	MAXIMUM POWER DISSIPATION	MAXIMUM REVERSE VOLTAGE	PANEL CUTOUT	MINIMUM MOUNTING CENTRES	MIN/MAX. PANEL THICKNESS
352	500	3	6.35	9.0	3.0
UNITS	mW	Vdc	mm	mm	mm

### OPTIONAL FLYING LEAD TERMINATIONS

ORDER CODE SUFFIX	SUPPLY VOLTAGE	WIRE COLOUR	WIRE LENGTH	NO/DIAMETER OF CONDUCTORS	DIAMETER OVER INSULATION	COMMENTS
13	DC Products	Red-anode / Black-cathode	150mm	7/0.2mm	1.2mm	Customised lengths available
13	AC Products	Brown-live / Blue-neutral	150mm			
17	DC Products	Red-anode / Black-cathode	1000mm			
17	AC Products	Brown-live / Blue-neutral	1000mm			

### PROTECTION DIODE

ORDER CODE SUFFIX	CIRCUIT	COMMENTS
01		Available on all indicators except Bi-Colour devices and when diode test is specified.

#### How to Order:

website: [www.marl.co.uk](http://www.marl.co.uk) • email: [sales@marl.co.uk](mailto:sales@marl.co.uk) •

• Telephone +44 (0)1229 582430 • Fax: +44 (0)1229 585155

The information contained in this datasheet does not constitute part of any order or contract and should not be regarded as a representation relating to either products or service. Marl International reserve the right to alter without notice the specification or any conditions of supply for products or service.



BS EN ISO 9001:2000  
Approved Manufacturer

## 352 Series

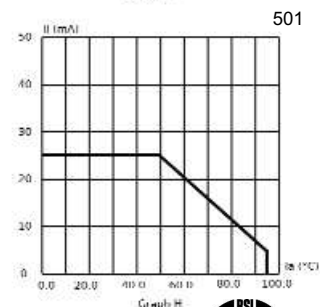
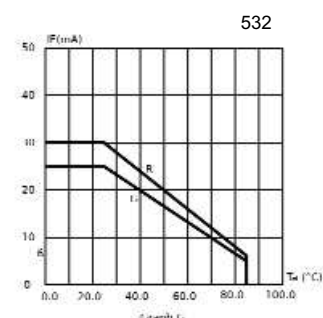
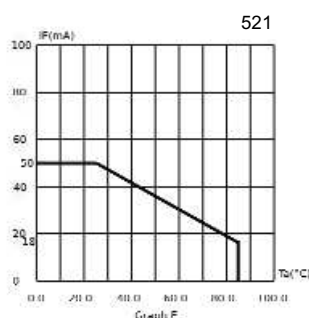
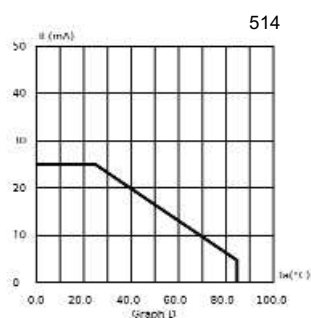
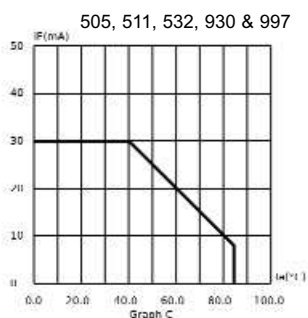
Part numbers also available in the 352 Series:

PART NO.	COLOUR	VOLTAGE (Vdc) Vopr
352-503-04	Red	20mA
352-503-04-15	Red	20mA
352-503-04-50	Red	20mA
352-505-04-52	Red	20mA
352-505-12-50	Red	24Vdc
352-509-04	Yellow	20mA
352-509-04-15	Yellow	20mA
352-509-04-50	Yellow	20mA
352-511-04-53	Yellow	20mA
352-512-04	Green	20mA
352-512-04-15	Green	20mA
352-512-04-50	Green	20mA
352-512-04-51	Green	20mA
352-512-04-52	Green	20mA
352-530-04	Red/Green	20mA
352-535-04-15	Red/Green/Amber	20mA
352-535-04-53	Red/Green/Amber	20mA
352-535-04-54	Red/Green/Amber	20mA
352-535-04-56	Red/Green/Amber	20mA
UNITS		

PART NO.	COLOUR	VOLTAGE (Vdc) Vopr
352-535-04-57	Red/Green/Amber	20mA
352-538-04-50	Red/Green/Amber	20mA
352-549-04	Green/Yellow	20mA
352-581-20-15	Red	5/6Vdc
352-581-20-52	Red	5/6Vdc
352-582-20-15	Yellow	5/6Vdc
352-582-20-50	Yellow	5/6Vdc
352-582-20-51	Yellow	5/6Vdc
352-583-20-15	Green	5/6Vdc
352-583-20-50	Green	5/6Vdc
352-583-20-54	Green	5/6Vdc
352-583-20-55	Green	5/6Vdc
352-584-21	Red	12Vdc
352-584-21-50	Red	12Vdc
352-585-21	Yellow	12Vdc
352-585-21-50	Yellow	12Vdc
352-586-21	Green	12Vdc
352-586-21-50	Green	12Vdc
352-586-21-51	Green	12Vdc
UNITS		

The products listed above illustrate all of the options available to order. These products may have custom modifications that alter their operation beyond the generic information contained within this datasheet. Please contact sales for further information.

## De-rating Information



### How to Order:

website: [www.marl.co.uk](http://www.marl.co.uk) • email: [sales@marl.co.uk](mailto:sales@marl.co.uk) •

• Telephone +44 (0)1229 582430 • Fax: +44 (0)1229 585155

The information contained in this datasheet does not constitute part of any order or contract and should not be regarded as a representation relating to either products or service. Marl International reserve the right to alter without notice the specification or any conditions of supply for products or service.



BS EN ISO 9001:2000  
Approved Manufacturer