

SMA Type Single-Conductor Optical Connector

C
905D

- 905D Series represents SMA type single-conductor optical connectors for optical fibers with large diameters.

FEATURE

- Designed for large-diameter fibers
- Designed for fixed connection with cable by bonding and crimping
- Low cost

Use

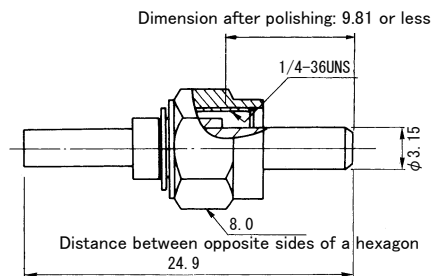
- Short distance communication between devices for factory and office automation, etc.

Specifications

Insert loss	Fiber	APF980/1000
	Flat polishing	2.0 dB or less
Operational temperature		−25 to +70°C
Durability		500 times

■ Plug

905D-119-20□□-01-CF



C
905D

SMA type optical connector designed for bundle and large-diameter fibers.

Models for single-conductor plastic fibers

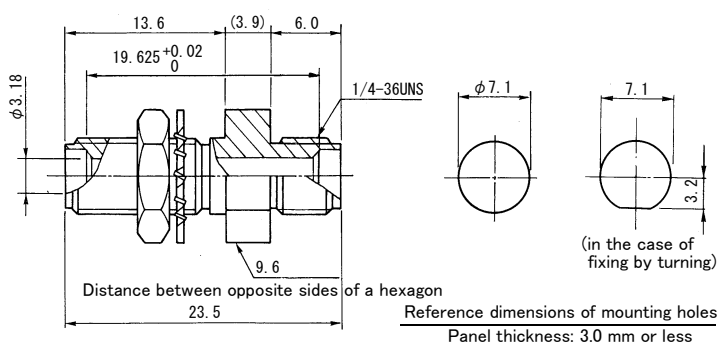
Connector parts	Diameter of ferrule hole	Applicable fiber diameter	Applicable outer diameter of sheath
905D-119-2001-01-CF	1.05 $^{+0.03}_{-0}$	1.0mm	2.2mm ± 0.1
905D-119-2008-CF	0.8 ± 0.01	0.75mm	2.2mm ± 0.1
905D-119-2050-01-CF	0.55 ± 0.01	0.5mm	1.0mm

Other models for bundle fiber, etc., are also available.

■ Adapter

905D-120-5000-CF

This adapter can be used commonly to the 905D and 906D Series plugs.

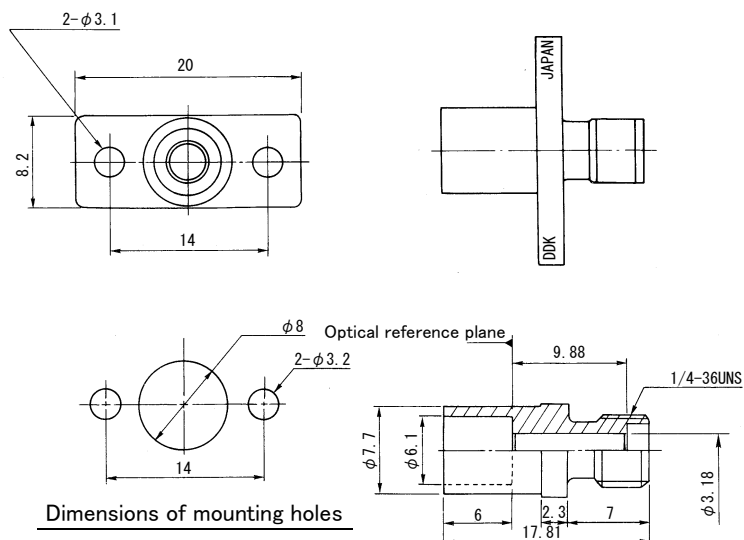


■ Receptacle

This receptacle can be used commonly to the 905D and 906D Series plugs.

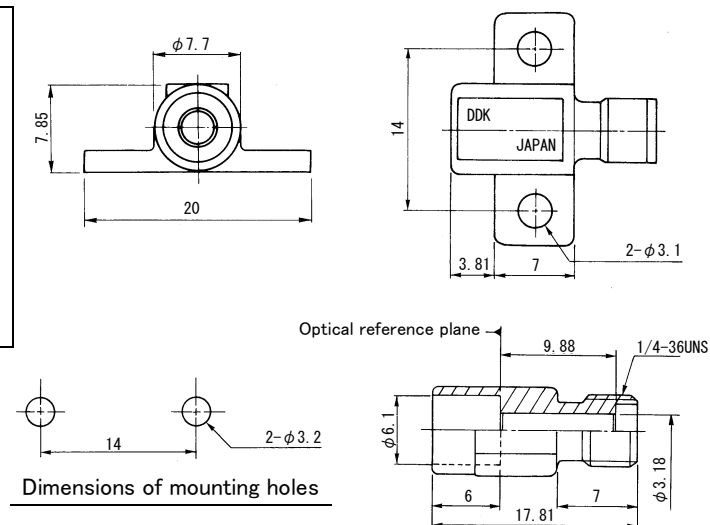
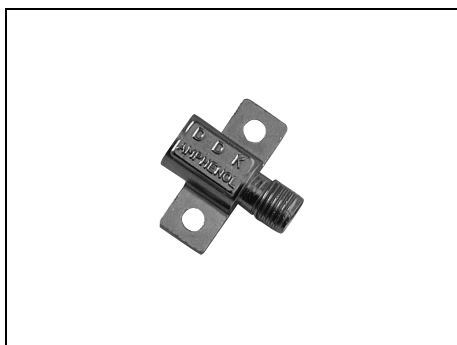
Model Mounted on Panel

905D-R181-001



Models Mounted on PCB and Panel

905D-R182-001

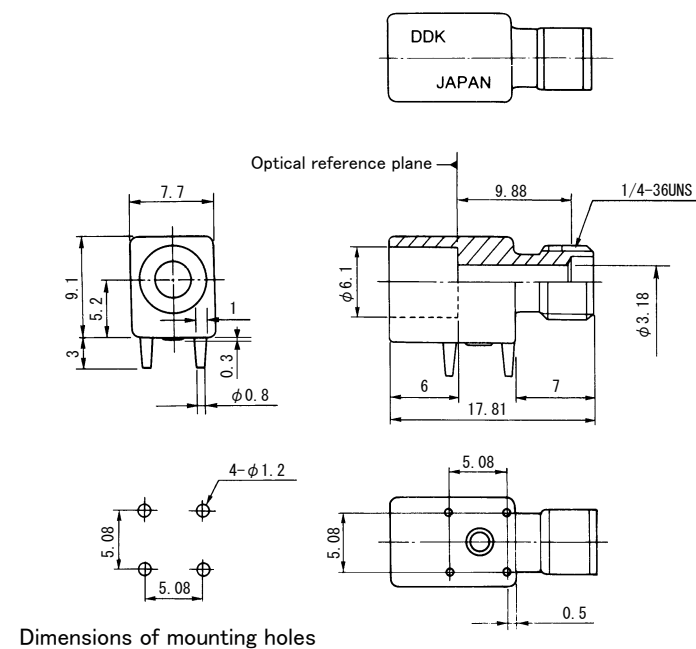
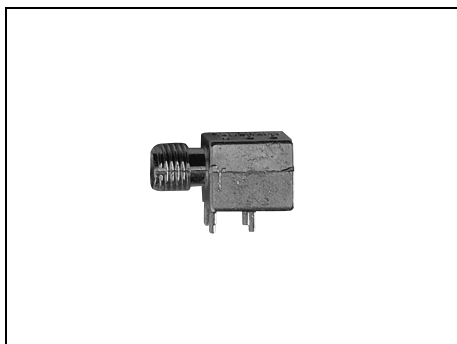


905D Series

Unit : mm

■ Model Mounted on PCB (for soldering dip)

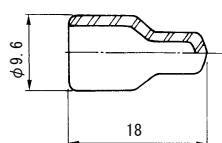
905D-R183-001

C
905D

■ Dust-resistat Cap

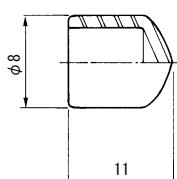
For Plugs (Vinyl chloride, yellow)

Cap V101Y

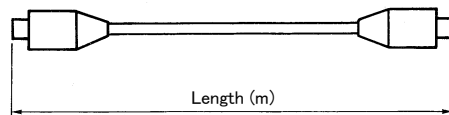


For Adapter Receptacles (Vinyl chloride, red)

Cap V001R



■ Optical Fiber Code with Connector (with Cap)



FOJ-905P2-A-()M-CF

Length (m)

A: With connector at an end
B: With connector at both ends

Fiber types
P2: APF980/1000 ϕ 2.2 code

C

905D